

DUAL SERIES SCHOTTKY BARRIER DIODE

These Schottky barrier diodes are designed for high speed applications, circuit protection, and voltage clamping. low forward voltage reduces conduction loss. Miniature package is excellent for hand held and portable applications space is limited.

●FEATURES

- 1)Extremely Fast Switching Speed
- 2) Low Forward Voltage — 0.35 Volts (Typ) @ $I_F = 10 \text{ mAdc}$
- 3)We declare that the material of product compliant with RoHS requirements and Halogen Free.
- 4)S- Prefix for automotive and other applications requiring unique site and control change requirements; AEC-Q101 qualified and PPAP capable.

●DEVICE MARKING AND ORDERING INFORMATION

| Device | Marking | Shipping |
|-------------|---------|-----------------|
| LBAT54CLT1G | 5C | 3000/Tape&Reel |
| LBAT54CLT3G | 5C | 10000/Tape&Reel |

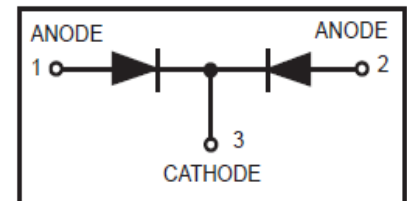
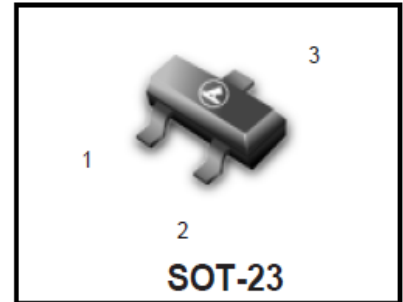
●MAXIMUM RATINGS($T_a = 25^\circ\text{C}$)

| Rating | Symbol | Limits | Unit |
|---------------------------------------------------------|-----------|------------|----------------------|
| DC reverse voltage | V_R | 30 | V |
| Forward Power Dissipation @ $T_A = 25^\circ\text{C}$ | P_F | 225 | mW |
| Derate above 25°C | | 1.8 | mW/ $^\circ\text{C}$ |
| DC forward current | I_F | 200Max | mA |
| Junction temperature | T_J | 125Max | $^\circ\text{C}$ |
| Storage temperature | T_{stg} | -55 ~ +150 | $^\circ\text{C}$ |

●ELECTRICAL CHARACTERISTICS ($T_a = 25^\circ\text{C}$)

| Parameter | Symbol | Min. | Typ. | Max. | Unit | Conditions |
|---------------------------------|-------------|------|------|------|---------------|--------------------------------------------------------|
| Reverse Breakdown Voltage | $V_{(BR)R}$ | 30 | — | — | V | $I_R = 10 \mu\text{A}$ |
| Total Capacitance | C_T | — | — | 10 | pF | $V_R = 1.0 \text{ V}, f = 1.0 \text{ MHz}$ |
| Reverse current | I_R | — | 0.5 | 2 | μA | $V_R = 25\text{V}$ |
| Forward voltage | V_F | — | 0.22 | 0.24 | V | $I_F = 0.1\text{mA}$ |
| Forward voltage | V_F | — | 0.29 | 0.32 | V | $I_F = 1\text{mA}$ |
| Forward voltage | V_F | — | 0.35 | 0.4 | V | $I_F = 10\text{mA}$ |
| Forward voltage | V_F | — | 0.41 | 0.5 | V | $I_F = 30\text{mA}$ |
| Forward voltage | V_F | — | 0.52 | 1 | V | $I_F = 100\text{mA}$ |
| Reverse Recovery Time | t_{rr} | — | — | 5 | ns | $I_F = I_R = 10\text{mA}, I_{R(REC)} = 1.0 \text{ mA}$ |
| Repetitive Peak Forward Current | I_{FRM} | — | — | 300 | mA | |
| Non-Repetitive Peak Forward | I_{FSM} | — | — | 600 | mA | ($t < 1.0 \text{ s}$) |

LBAT54CLT1G S-LBAT54CLT1G



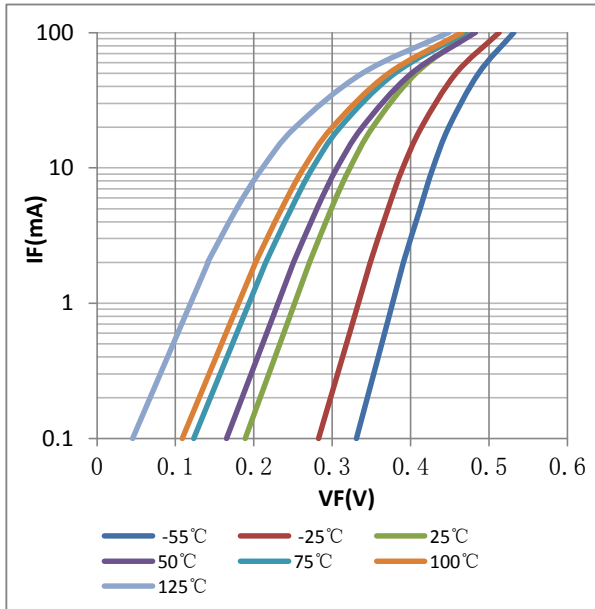
LBAT54CLT1G,S-LBAT54CLT1G
ELECTRICAL CHARACTERISTIC CURVES


FIG. 1 Forward Characteristics

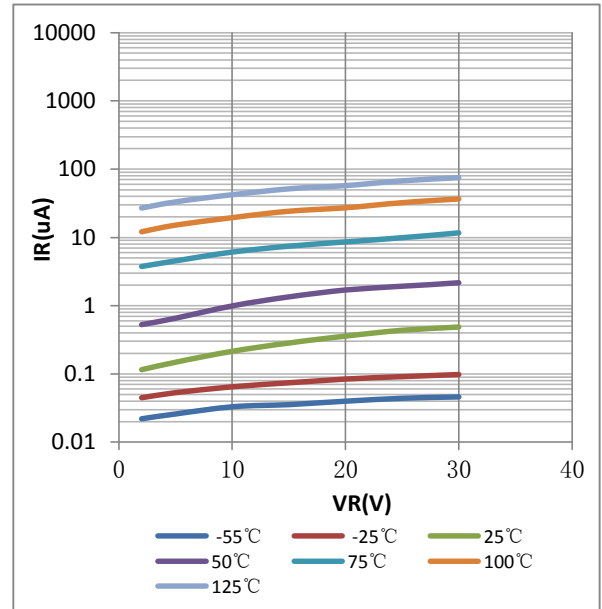


FIG. 2 Reverse Characteristics

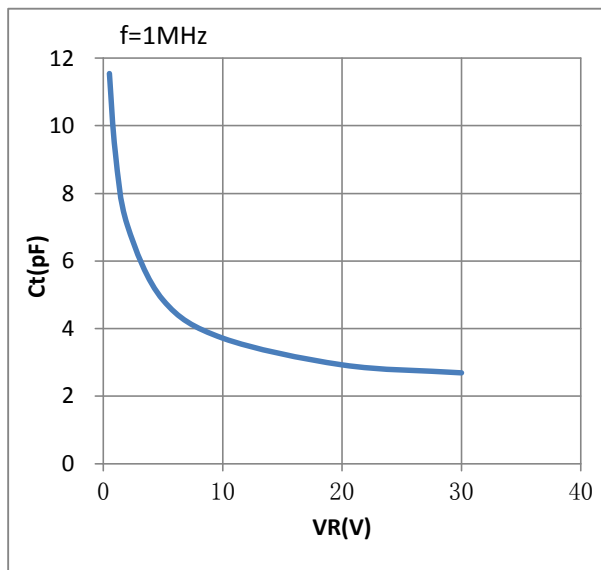
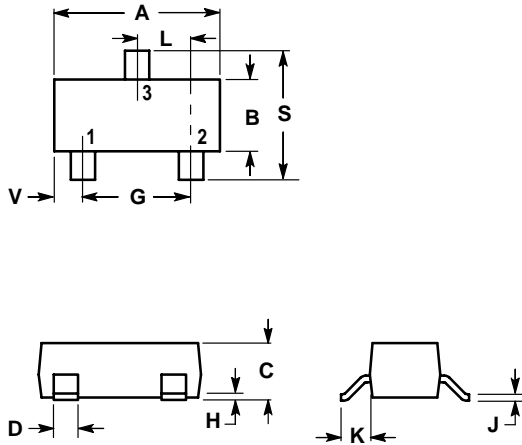


FIG. 3 Capacitance

LBAT54CLT1G,S-LBAT54CLT1G

SOT-23

Dimension Outline:

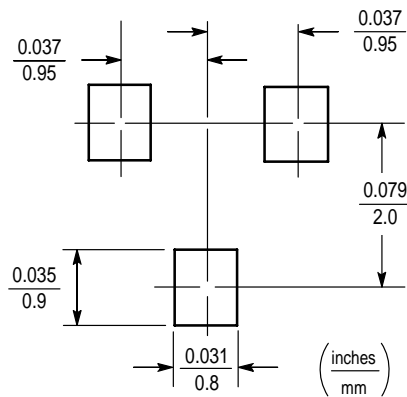


NOTES:

1. DIMENSIONING AND TOLERANCING PER ANSI Y14.5M, 1982.
2. CONTROLLING DIMENSION: INCH.

| DIM | INCHES | | MILLIMETERS | |
|-----|--------|--------|-------------|-------|
| | MIN | MAX | MIN | MAX |
| A | 0.1102 | 0.1197 | 2.80 | 3.04 |
| B | 0.0472 | 0.0551 | 1.20 | 1.40 |
| C | 0.0350 | 0.0440 | 0.89 | 1.11 |
| D | 0.0150 | 0.0200 | 0.37 | 0.50 |
| G | 0.0701 | 0.0807 | 1.78 | 2.04 |
| H | 0.0005 | 0.0040 | 0.013 | 0.100 |
| J | 0.0034 | 0.0070 | 0.085 | 0.177 |
| K | 0.0140 | 0.0285 | 0.35 | 0.69 |
| L | 0.0350 | 0.0401 | 0.89 | 1.02 |
| S | 0.0830 | 0.1039 | 2.10 | 2.64 |
| V | 0.0177 | 0.0236 | 0.45 | 0.60 |

Soldering Footprint:



X-ON Electronics

Largest Supplier of Electrical and Electronic Components

Click to view similar products for [Schottky Diodes & Rectifiers](#) category:

Click to view products by [Leshan](#) manufacturer:

Other Similar products are found below :

[MA4E2039](#) [MA4E2508M-1112](#) [MBR10100CT-BP](#) [MBR1545CT](#) [MMBD301M3T5G](#) [GS1JE-TP](#) [RB160M-50TR](#) [BAS 3010S-02LRH E6327](#)
[BAT 54-02LRH E6327](#) [NSR05F40QNXT5G](#) [NSVR05F40NXT5G](#) [NTE555](#) [JANS1N6640](#) [SB07-03C-TB-H](#) [SB1003M3-TL-W](#)
[SBAT54CWT1G](#) [SBM30-03-TR-E](#) [SK310-T](#) [SK33A-TP](#) [SK34B-TP](#) [SS3003CH-TL-E](#) [PDS3100Q-7](#) [GA01SHT18](#) [CRS10I30A\(TE85L,QM](#)
[MA4E2501L-1290](#) [MBRB30H30CT-1G](#) [BAS 70-02L E6327](#) [DMJ3940-000](#) [SB007-03C-TB-E](#) [SB10015M-TL-E](#) [SB1003M3-TL-E](#) [SK32A-](#)
[TP](#) [SK33B-TP](#) [SK35A-TP](#) [SK38B-LTP](#) [SK38B-TP](#) [NTE505](#) [NTSB30U100CT-1G](#) [VS-6CWQ10FNHM3](#) [CRG04\(T5L,TEMQ\)](#)
[ACDBA1100LR-HF](#) [ACDBA1200-HF](#) [ACDBA140-HF](#) [ACDBA2100-HF](#) [ACDBA240-HF](#) [ACDBA3100-HF](#) [CDBQC0530L-HF](#) [BAT54-](#)
[13-F](#) [ACDBA340-HF](#) [ACDBA260LR-HF](#)