

LMBR4020H3T5G

Schottky Barrier Diode



1. FEATURES

- Small mold type.
- Low IR
- High reliability.
- We declare that the material of product compliance with RoHS requirements and Halogen Free.

2. APPLICATIONS

- Low current rectification
- Silicon epitaxial planar

3. DEVICE MARKING AND ORDERING INFORMATION

Device	Marking	Shipping
LMBR4020H3T5G	E	10000/Tape&Reel

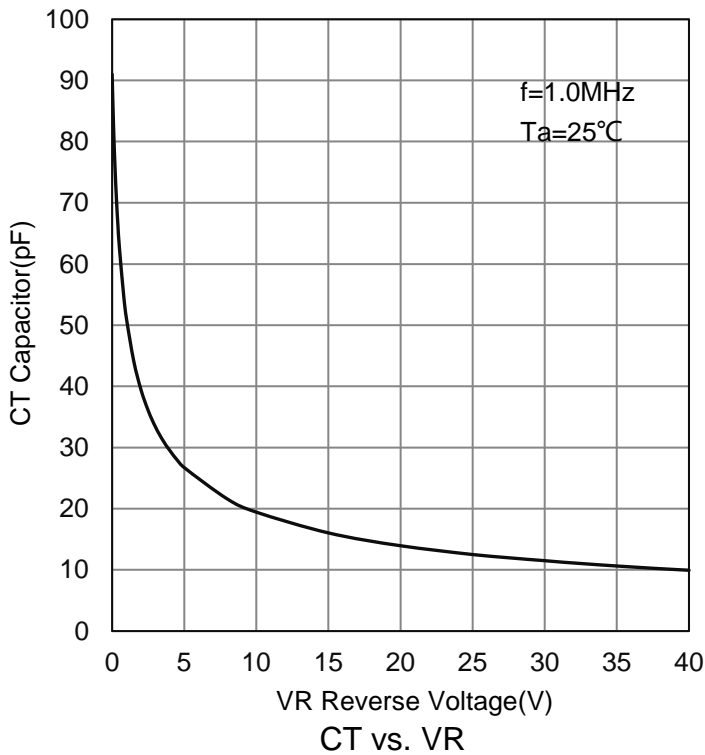
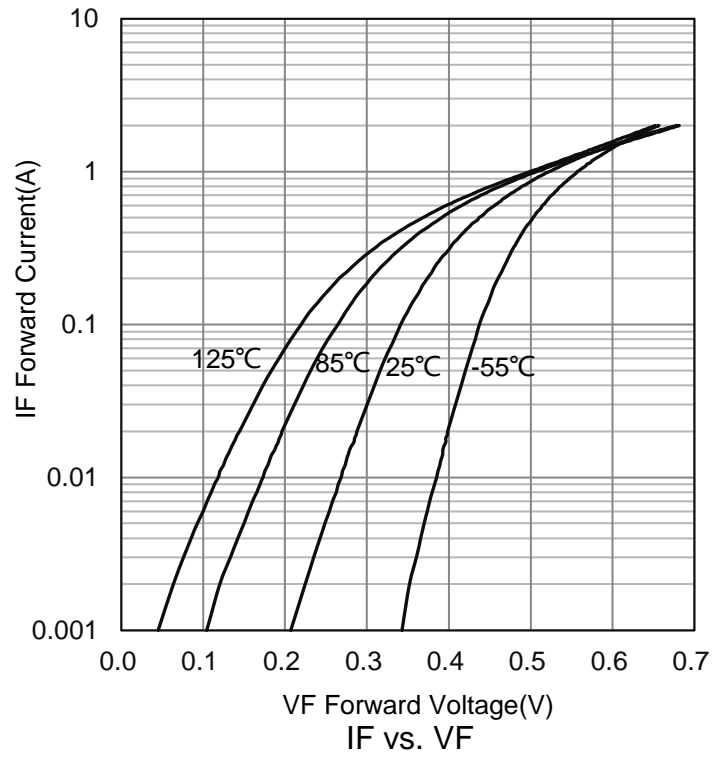
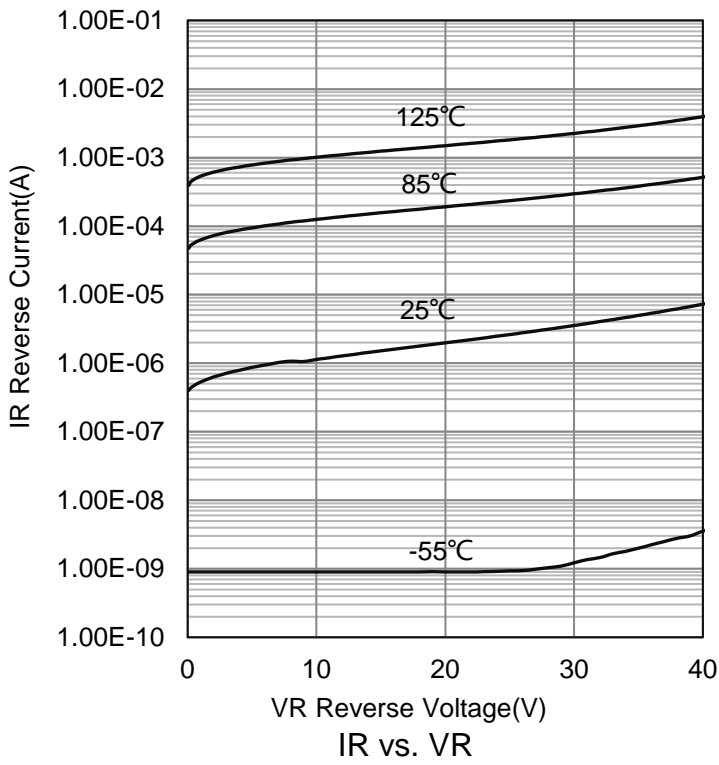
4. MAXIMUM RATINGS(Ta = 25°C)

Parameter	Symbol	Limits	Unit
DC Reverse Voltage	VR	40	V
Average rectified forward current	IF	2	A
Peak Forward Surge Current 8.3ms Single Half Sine Wave Superimposed on Rated Load	IFSM	12	A
Junction Temperature Range	TJ	-55 to 125	°C
Storage Temperature Range	Tstg	-55 to 125	°C

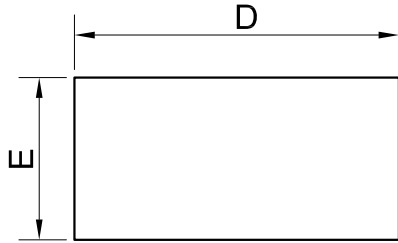
5. ELECTRICAL CHARACTERISTICS (Ta= 25°C)

Characteristic	Symbol	Min.	Typ.	Max.	Unit
Forward Voltage (IF = 1A)	VF	-	0.53	0.56	V
(IF = 1.5A)		-	0.6	0.65	
Reverse Voltage Leakage Current (VR = 40V)	IR	-	-	50	μA
Junction Capacitance (VR =0V , f = 1.0 MHz)	Cj	-	150	-	pF

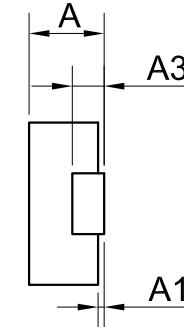
6.ELECTRICAL CHARACTERISTICS CURVES



7. OUTLINE AND DIMENSIONS

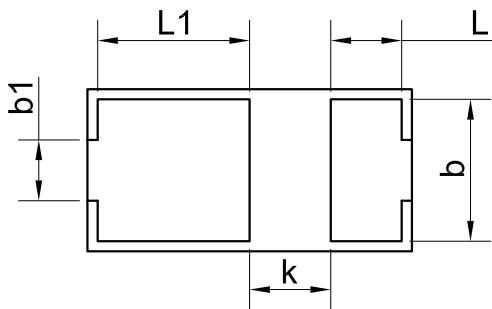


TOP VIEW



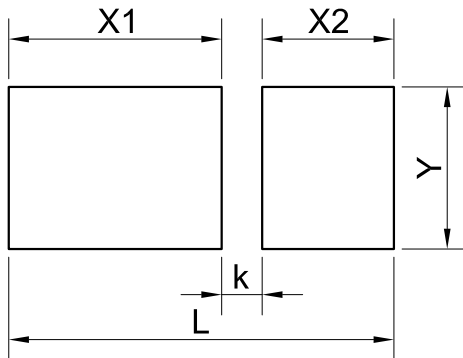
SIDE VIEW

DFN1608-2			
DIM	MIN	NOR	MAX
A	0.32	0.37	0.42
A1	0.01	0.03	0.05
b	0.65	0.70	0.75
b1	0.25	0.30	0.35
D	1.55	1.60	1.65
E	0.75	0.80	0.85
k	0.35	0.40	0.45
L	0.30	0.35	0.40
L1	0.70	0.75	0.80
A3	0.127REF.		
All Dimensions in mm			



BOTTOM VIEW

8. SOLDERING FOOTPRINT



DFN1608-2	
DIM	(mm)
X1	1.05
X2	0.65
L	1.90
Y	0.80
K	0.20

X-ON Electronics

Largest Supplier of Electrical and Electronic Components

Click to view similar products for [Schottky Diodes & Rectifiers](#) category:

Click to view products by [Leshan](#) manufacturer:

Other Similar products are found below :

[MA4E2039](#) [MA4E2508M-1112](#) [MBR10100CT-BP](#) [MBR1545CT](#) [MMBD301M3T5G](#) [RB160M-50TR](#) [BAS16E6433HTMA1](#) [BAS 3010S-02LRH E6327](#) [BAT 54-02LRH E6327](#) [IDL02G65C5XUMA1](#) [NSR05F40QNXT5G](#) [NSVR05F40NXT5G](#) [NTE555](#) [JANS1N6640](#) [SB07-03C-TB-H](#) [SK310-T](#) [SK33A-TP](#) [SK34B-TP](#) [SS3003CH-TL-E](#) [PDS3100Q-7](#) [GA01SHT18](#) [CRS10I30A\(TE85L,QM](#) [MA4E2501L-1290](#) [MBRB30H30CT-1G](#) [JANTX1N5712-1](#) [SB007-03C-TB-E](#) [SK33B-TP](#) [SK35A-TP](#) [SK38B-LTP](#) [NTE505](#) [NTSB30U100CT-1G](#) [VS-6CWQ10FNHM3](#) [CRG04\(T5L,TEMQ\)](#) [ACDBA1100LR-HF](#) [ACDBA1200-HF](#) [ACDBA240-HF](#) [ACDBA3100-HF](#) [CDBQC0530L-HF](#) [ACDBA260LR-HF](#) [ACDBA1100-HF](#) [MA4E2502L-1246](#) [10BQ015-M3/5BT](#) [10BQ060-M3/5BT](#) [NRVB130LSFT1G](#) [CRS08TE85LQM](#) [PMAD1108-LF](#) [B120Q-13-F](#) [1N5819T-G](#) [B0530WSQ-7-F](#) [PDS1040Q-13](#)