

# SCHOTTKY BARRIER DIODE

## Features

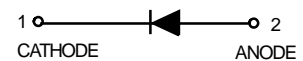
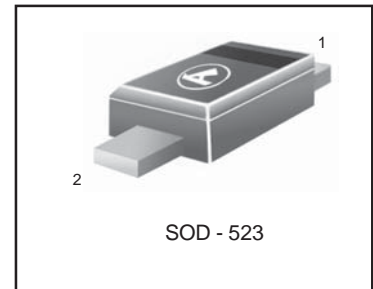
- (1) Small surface mounting type SC-79/SOD523
- (2) Low reverse current and low forward voltage.
- (3) High reliability
- (4) S- Prefix for Automotive and Other Applications Requiring Unique Site and Control Change Requirements; AEC-Q101 Qualified and PPAP Capable.

## Construction

silicon epitaxial planar

We declare that the material of product compliance with RoHS requirements.

**LRB751S-40T1G**  
**S-LRB751S-40T1G**



## MAXIMUM RATINGS (T<sub>A</sub> = 25°C)

Parameter	Symbol	Limits	Unit
Peak reverse voltage	V <sub>RM</sub>	40	V
DC reverse voltage	V <sub>R</sub>	30	V
Mean rectifying current	I <sub>O</sub>	30	mA
Peak forward surge current	I <sub>FSM</sub>	200	mA
Junction temperature	T <sub>j</sub>	125	°C
Storage temperature	T <sub>stg</sub>	-40~+125	°C

## DEVICE MARKING

LRB751S-40T1G= 5

## ELECTRICAL CHARACTERISTICS(T<sub>A</sub> = 25°C)

Parameter	Symbol	Min.	Typ	Max.	Unit	Conditions
Forward voltage	V <sub>F</sub>	-	-	0.37	V	I <sub>F</sub> =1mA
Reverse current	I <sub>R</sub>	-	-	0.5	μA	V <sub>R</sub> =30V
Capacitance between terminals	C <sub>T</sub>	-	2.0	-	pF	V <sub>R</sub> =1V, f=1MHz

## Ordering Information

Device	Marking	Shipping
LRB751S-40T1G S-LRB751S-40T1G	5	3000/Tape&Reel
LRB751S-40T3G S-LRB751S-40T3G	5	10000/Tape&Reel

LRB751S-40T1G , S-LRB751S-40T1G

Electrical characteristic curves( $T_A = 25^\circ\text{C}$ )

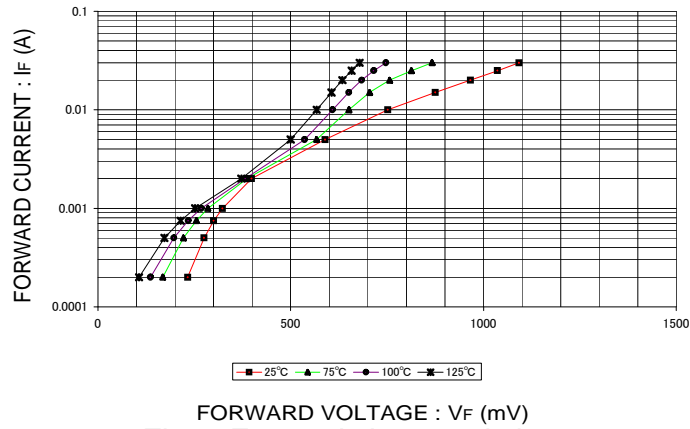


Fig. 1 Forward characteristics

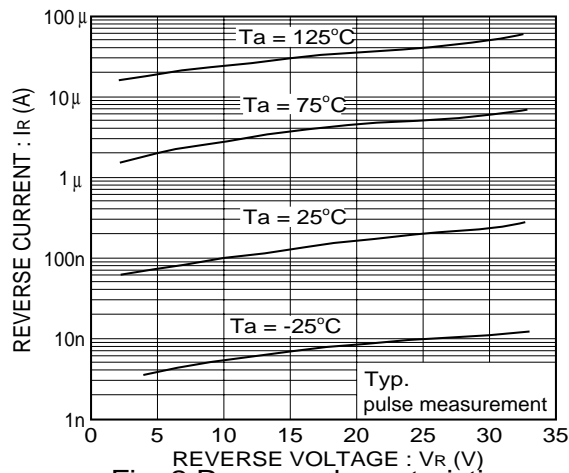


Fig. 2 Reverse characteristics

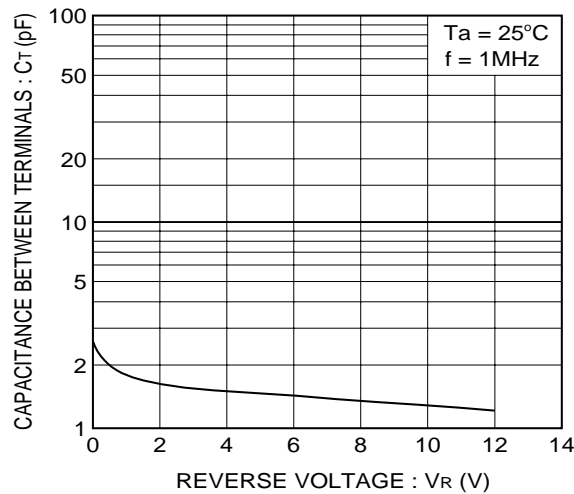
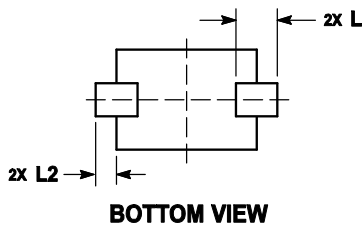
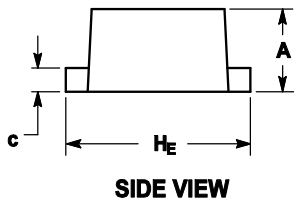
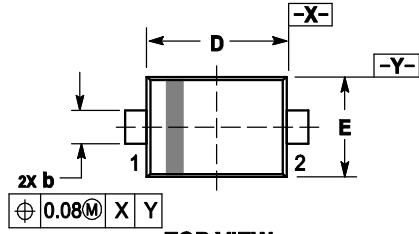


Fig. 3 Capacitance between terminals characteristics

**LRB751S-40T1G , S-LRB751S-40T1G**

**OUTLINE AND DIMENSIONS**

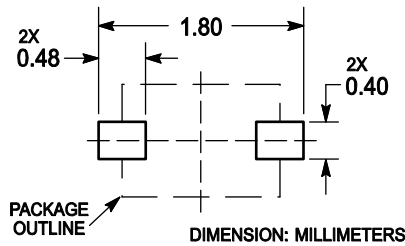


Notes:

1. DIMENSIONING AND TOLERANCING PER ANSI Y14.5M, 1982.
2. CONTROLLING DIMENSION: MILLIMETERS.
3. MAXIMUM LEAD THICKNESS INCLUDES LEAD FINISH. MINIMUM LEAD THICKNESS IS THE MINIMUM THICKNESS OF BASE MATERIAL.
4. DIMENSIONS D AND E DO NOT INCLUDE MOLD FLASH, PROTRUSIONS OR GATE BURRS.

DIM	MILLIMETERS			INCHES		
	MIN	NOM	MAX	MIN	NOM	MAX
A	0.50	0.60	0.70	0.020	0.024	0.028
b	0.25	0.30	0.35	0.010	0.012	0.014
c	0.07	0.14	0.20	0.003	0.006	0.008
D	1.10	1.20	1.30	0.043	0.047	0.051
E	0.70	0.80	0.90	0.028	0.031	0.035
H <sub>E</sub>	1.50	1.60	1.70	0.059	0.063	0.067
L	0.30 REF			0.012 REF		
L <sub>2</sub>	0.15	0.20	0.25	0.006	0.008	0.010

**SOLDERING FOOTPRINT**



## X-ON Electronics

Largest Supplier of Electrical and Electronic Components

*Click to view similar products for [Schottky Diodes & Rectifiers](#) category:*

*Click to view products by [Leshan](#) manufacturer:*

Other Similar products are found below :

[MA4E2039](#) [MA4E2508M-1112](#) [MBR10100CT-BP](#) [MBR1545CT](#) [MMBD301M3T5G](#) [GS1JE-TP](#) [RB160M-50TR](#) [BAS 3010S-02LRH E6327](#)  
[BAT 54-02LRH E6327](#) [NSR05F40QNXT5G](#) [NSVR05F40NXT5G](#) [NTE555](#) [JANS1N6640](#) [SB07-03C-TB-H](#) [SB1003M3-TL-W](#)  
[SBAT54CWT1G](#) [SBM30-03-TR-E](#) [SK310-T](#) [SK33A-TP](#) [SK34B-TP](#) [SS3003CH-TL-E](#) [PDS3100Q-7](#) [GA01SHT18](#) [CRS10I30A\(TE85L,QM](#)  
[MA4E2501L-1290](#) [MBRB30H30CT-1G](#) [BAS 70-02L E6327](#) [DMJ3940-000](#) [SB007-03C-TB-E](#) [SB10015M-TL-E](#) [SB1003M3-TL-E](#) [SK32A-](#)  
[TP](#) [SK33B-TP](#) [SK35A-TP](#) [SK38B-LTP](#) [SK38B-TP](#) [NRVBM120LT1G](#) [NTE505](#) [NTSB30U100CT-1G](#) [VS-6CWQ10FNHM3](#)  
[CRG04\(T5L,TEMQ\)](#) [ACDBA1100LR-HF](#) [ACDBA1200-HF](#) [ACDBA140-HF](#) [ACDBA2100-HF](#) [ACDBA240-HF](#) [ACDBA3100-HF](#)  
[CDBQC0530L-HF](#) [BAT54-13-F](#) [ACDBA340-HF](#)