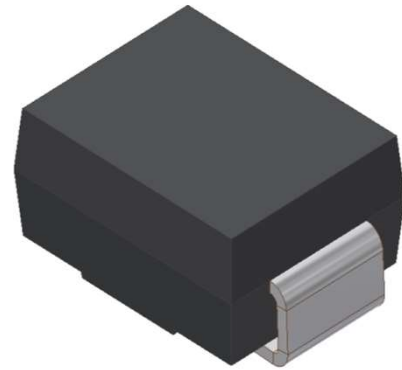


S-RS2MB

Surface Mount Glass Passivated Fast Rectifiers
Reverse Voltage 1000V Forward Current 2.0A

1. FEATURES

- We declare that the material of product compliance with RoHS requirements and Halogen Free.
- Plastic package has Underwriters Laboratory Flammability Classification 94V-0.
- High temperature metallurgically bonded construction.
- Cavity-free glass passivated junction.
- Capable of meeting environmental standards of MIL-S-19500.
- Fast Switching for high efficiency
- Typical IR less than 1.0 μ A.
- High temperature soldering guaranteed:260°C/10 seconds.
- Weight: 0.088g
- S- prefix for automotive and other applications requiring unique site and control change requirements; AEC-Q101 qualified and PPAP capable.



2. DEVICE MARKING AND ORDERING INFORMATION

| Device | Marking | Shipping |
|---------|---------|----------------|
| S-RS2MB | RS2M | 3500/Tape&Reel |

3. MAXIMUM RATINGS(Ta = 25°C)

| Parameter | Symbol | Limits | Unit |
|-----------------------------------------------------------------------------------------------------|---------------|-----------|------|
| Maximum repetitive peak reverse voltage | VRRM | 1000 | V |
| Maximum RMS voltage | VRMS | 700 | V |
| Maximum DC blocking voltage | VDC | 1000 | V |
| Maximum average forward rectified current 0.375" (9.5mm) lead length at TC = 75°C | IF(AV) | 2 | A |
| Peak forward surge current 8.3ms single half sine-wave superimposed on rated load (JEDEC Method) | IFSM | 50 | A |
| Typical thermal resistance (Note 1) | R θ JA | 160 | °C/W |
| | R θ JC | 50 | |
| Operating junction and storage temperature range | TJ, TSTG | -50 ~+150 | °C |

4. ELECTRICAL CHARACTERISTICS (Ta= 25°C)

| Characteristic | Symbol | Min. | Typ. | Max. | Unit |
|---------------------------------------------------------------------------------|--------|------|------|----------|---------|
| Maximum instantaneous forward voltage at 2.0A | VF | - | - | 1.3 | V |
| Maximum DC reverse current TA = 25°C at rated DC blocking voltage TJ = 125°C | IR | - | - | 5 100 | μ A |
| Typical reverse recovery time (Note 2) | trr | - | 500 | - | ns |
| Typical junction capacitance at 4.0V, 1MHz | CJ | - | 30 | - | PF |

1. 8.0mm² (.013mm thick) land areas
2. IF = 0.5A, IR = 1.0A, IRR = 0.25A

5. ELECTRICAL CHARACTERISTICS CURVES

Fig. 1 - Forward Current Derating Curve

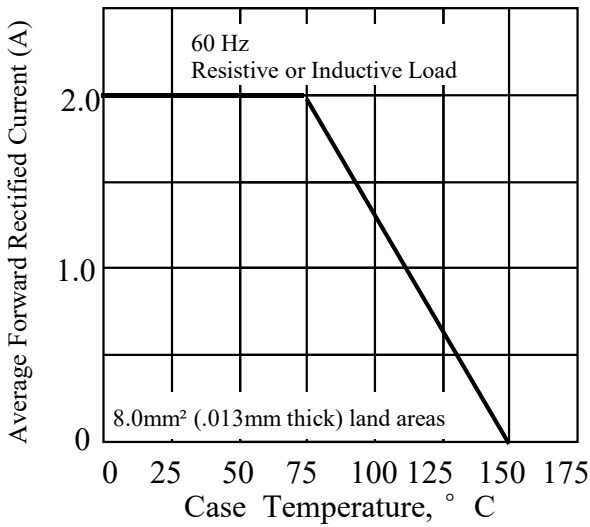


Fig. 2 - Maximum Non-repetitive Peak Forward Surge Current

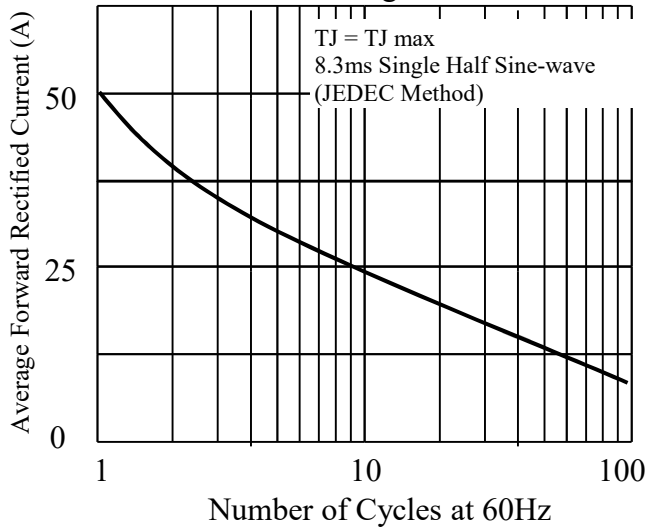


Fig 3. - Typical Instantaneous Forward Characteristics

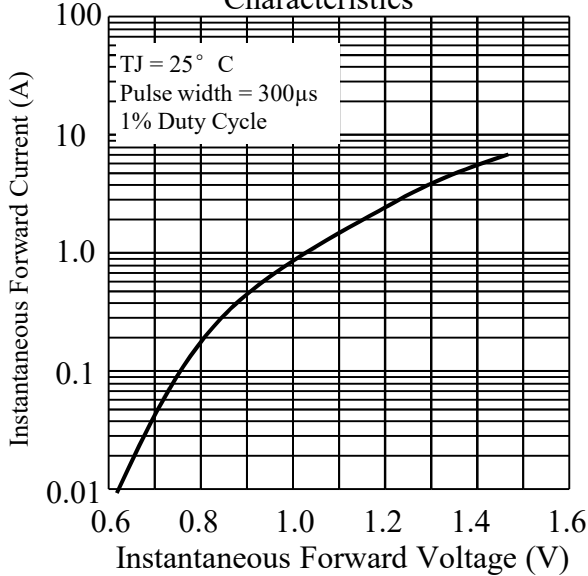


Fig 4. - Typical Reverse Characteristics

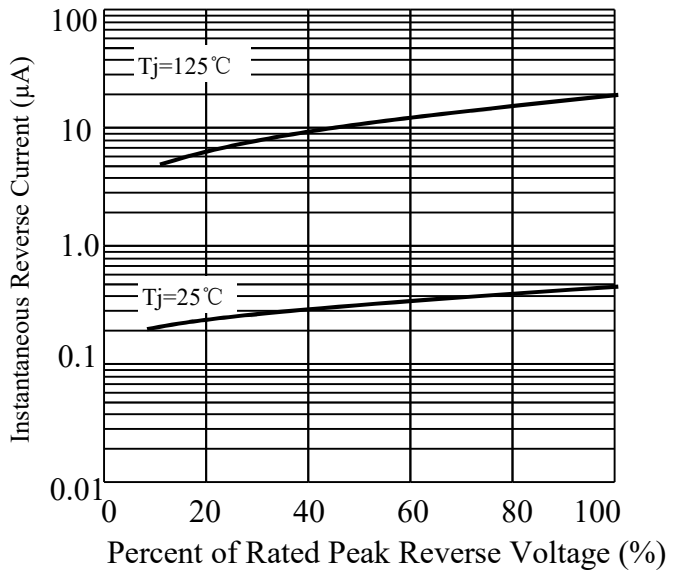
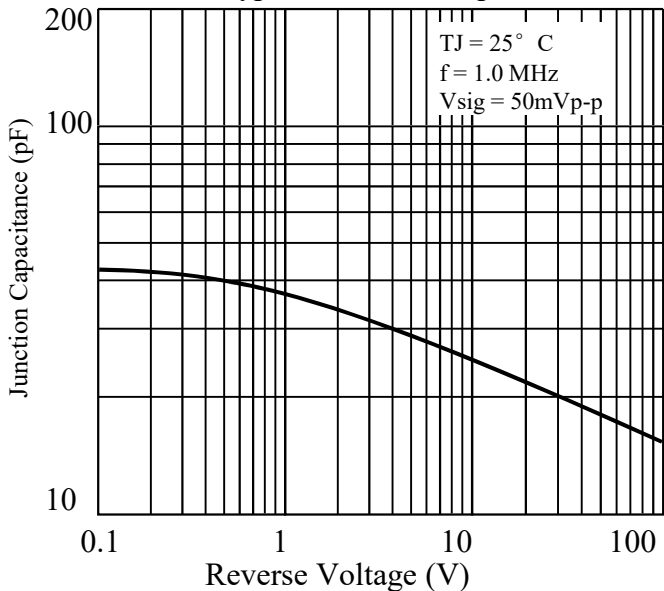
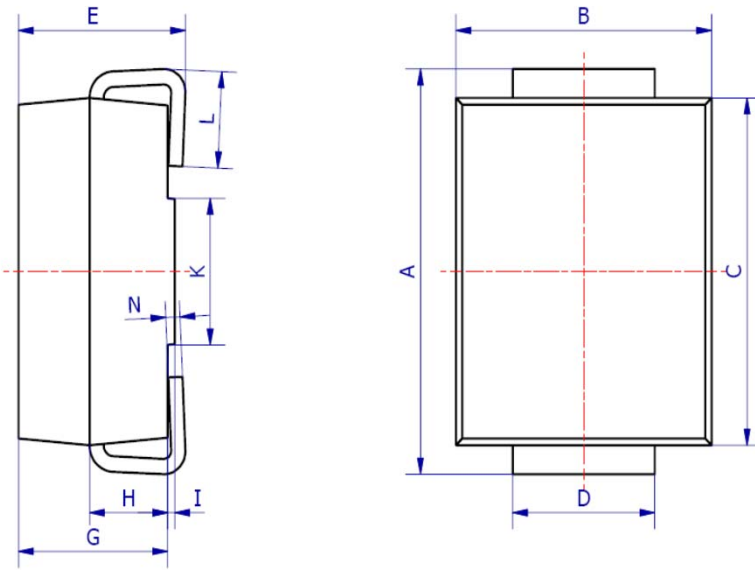
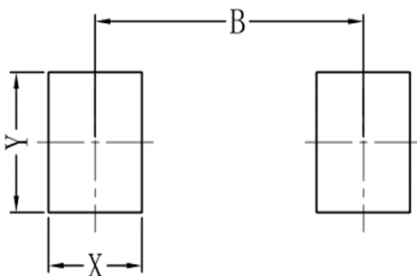


Fig 5. - Typical Junction Capacitance



6.OUTLINE AND DIMENSIONS


| SMB | | | |
|----------------------|------|------|------|
| DIM | Min | Max | Typ. |
| A | 5.20 | 5.45 | 5.25 |
| B | 3.20 | 4.00 | 3.60 |
| C | 4.30 | 4.60 | 4.50 |
| D | 1.80 | 2.20 | 2.00 |
| E | 2.20 | 2.50 | 2.35 |
| G | 1.90 | 2.30 | 2.10 |
| H | 0.95 | 1.25 | 1.10 |
| I | 0.05 | 0.15 | 0.10 |
| K | 1.70 | 2.10 | 1.90 |
| L | 0.90 | 1.50 | 1.20 |
| N | 0.10 | 0.30 | 0.20 |
| All Dimensions in mm | | | |

7.SOLDERING FOOTPRINT


| SMB | |
|-----|------|
| DIM | (mm) |
| X | 1.60 |
| Y | 2.20 |
| B | 4.60 |

X-ON Electronics

Largest Supplier of Electrical and Electronic Components

Click to view similar products for [Diodes - General Purpose, Power, Switching category:](#)

Click to view products by [Leshan manufacturer:](#)

Other Similar products are found below :

[MCL4151-TR3](#) [MMBD3004S-13-F](#) [RD0306T-H](#) [DSE010-TR-E](#) [BAV17-TR](#) [BAV19-TR](#) [1N3611](#) [NTE156A](#) [NTE574](#) [NTE6244](#) [1SS181-TP](#) [1SS400CST2RA](#) [SDAA13](#) [SHN2D02FUTW1T1G](#) [LS4151GS08](#) [FC903-TR-E](#) [1N4449](#) [1N456A](#) [1N4934-E3/73](#) [1N914B](#) [1N914BTR](#) [1SS226-TP](#) [RFUH20TB3S](#) [D291S45T](#) [BAV300-TR](#) [BAW56DWQ-7-F](#) [BAW75-TAP](#) [MM230L-CAA](#) [IDW40E65D1](#) [JAN1N3600](#) [JAN1N4153-1](#) [JAN1N4454-1](#) [JAN1N4454UR-1](#) [LL4151-GS18](#) [053684A](#) [SMMSD4148T3G](#) [707803H](#) [NSVDAN222T1G](#) [CDSZC01100-HF](#) [LL4150-M-08](#) [1N4454-TR](#) [BAV70HDW-7](#) [BAS28-7](#) [JANTX1N6640](#) [BAW56HDW-13](#) [BAS28 TR](#) [VS-HFA04SD60STR-M3](#) [NSVM1MA152WKT1G](#) [1SS388-TP](#) [RGP30D-E3/73](#)