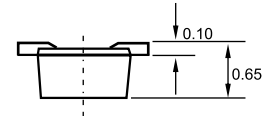
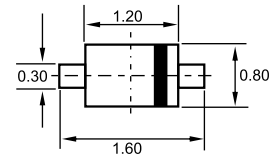


SOD-523



Dimensions in inches and (millimeters)

Features

- ✧ Ultra small plastic SMD package.
- ✧ High switching speed: max.4ns.
- ✧ Continuous reverse voltage: max.75V.
- ✧ Repetitive peak reverse voltage: max.85V
- ✧ Repetitive peak forward current: max.500mA

Applications

- ✧ High-speed switching in surface mounted circuits.

Ordering Information

Type No.	Marking	Package Code
BAS516	61	SOD-523

MAXIMUM RATING @ Ta=25°C unless otherwise specified

Parameter	Symbol	Limits	Unit	
Repetitive peak reverse voltage	V_{RRM}	85	V	
Continuous reverse voltage	V_R	75	V	
Continuous forward current	I_F	250	mA	
Non-repetitive peak forward surge current	I_{FSM}	$t=1\mu s$	4	A
		$t=1ms$	1	
		$t=1s$	0.5	
Total power dissipation	P_{tot}	500	mW	
Junction temperature	T_j	150	°C	
Storage temperature	T_{stg}	-65-150	°C	

ELECTRICAL CHARACTERISTICS @ Ta=25°C unless otherwise specified

Parameter	Symbol	Min.	Max.	Unit	Conditions
Forward voltage	V_F		0.715	V	$I_F=1\text{mA}$
			0.855	V	$I_F=10\text{mA}$
			1	V	$I_F=50\text{mA}$
			1.25	V	$I_F=150\text{mA}$
Reverse current	I_R		30	nA	$V_R=25\text{V}$
			30	μA	$V_R=25\text{V } T_J=150^\circ\text{C}$
			1	μA	$V_R=75\text{V}$
		50	μA	$V_R=75\text{V } T_J=150^\circ\text{C}$	
Diode capacitance	C_d		1	pF	$V_R=0, f=1\text{MHz}$
Reverse recovery time	t_{rr}		4	ns	$I_F=10\text{mA}, I_R=10\text{mA}, R_L=1\text{mA}$

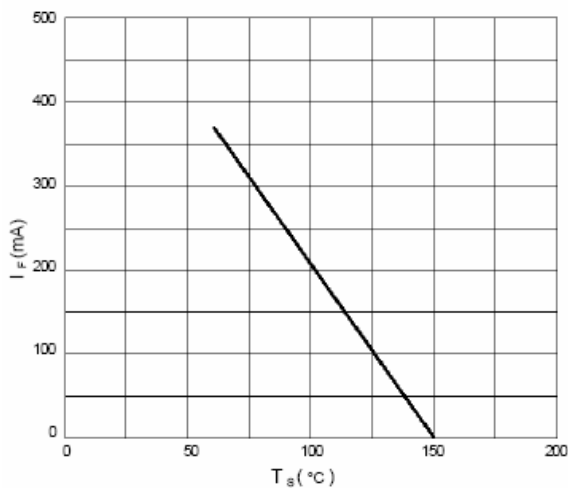
TYPICAL CHARACTERISTICS @ Ta=25°C unless otherwise specified


Fig.1 Maximum permissible continuous forward current as a function of soldering point temperature.

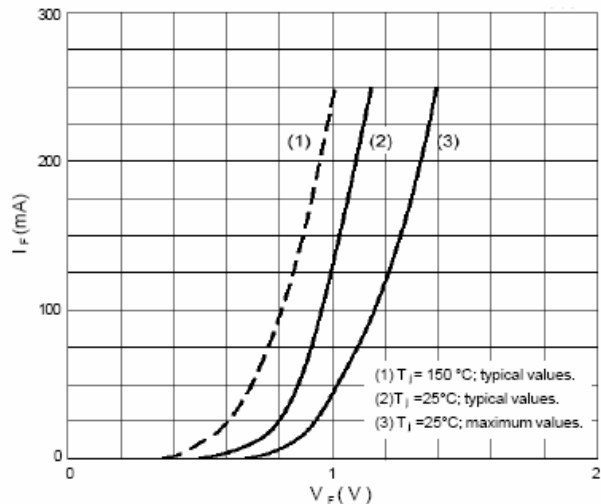


Fig.2 Forward current as a function of forward voltage.

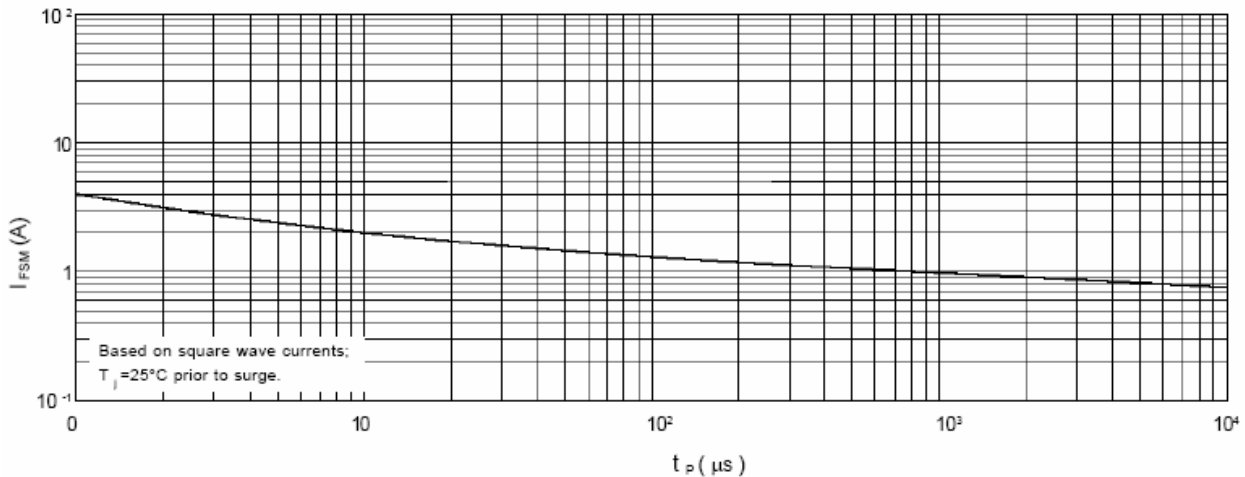


Fig.3 Maximum permissible non-repetitive peak forward current as a function of pulse duration.

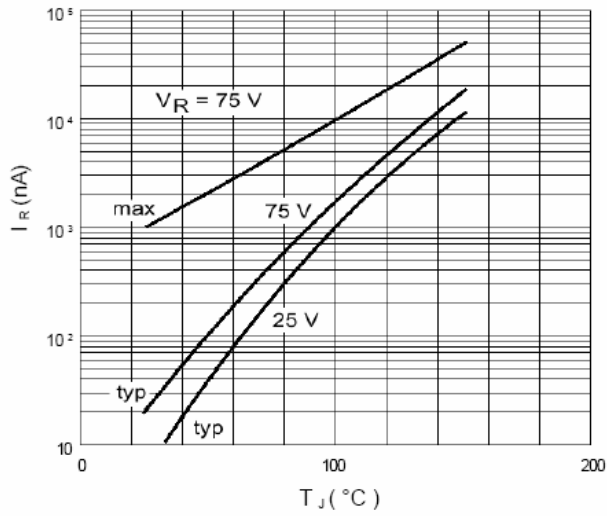


Fig.4 Reverse current as a function of junction temperature.

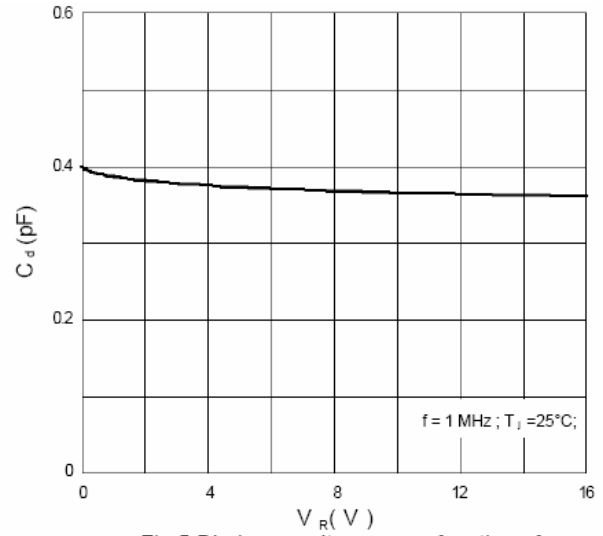


Fig.5 Diode capacitance as a function of reverse voltage; typical values.

X-ON Electronics

Largest Supplier of Electrical and Electronic Components

Click to view similar products for [Diodes - General Purpose, Power, Switching category](#):

Click to view products by [LGE manufacturer](#):

Other Similar products are found below :

[MCL4151-TR3](#) [MMBD3004S-13-F](#) [RD0306T-H](#) [1N3611](#) [NTE156A](#) [NTE574](#) [NTE6244](#) [1SS193,LF](#) [1SS400CST2RA](#) [SDAA13](#)
[SHN2D02FUTW1T1G](#) [LS4151GS08](#) [1N4449](#) [1N456A](#) [1N4934-E3/73](#) [1N914BTR](#) [RFUH20TB3S](#) [D291S45T](#) [BAV300-TR](#) [BAW56DWQ-](#)
[7-F](#) [BAW56M3T5G](#) [BAW75-TAP](#) [MM230L-CAA](#) [IDW40E65D1](#) [JAN1N3600](#) [JAN1N4454UR-1](#) [LL4151-GS18](#) [SMMSD4148T3G](#)
[BYW95B/A52A](#) [NSVDAN222T1G](#) [CDSZC01100-HF](#) [LL4150-M-08](#) [1N4454-TR](#) [BAV70HDW-7](#) [BAS28-7](#) [JANTX1N6640](#) [BAW56HDW-](#)
[13](#) [BAS28 TR](#) [VS-HFA04SD60STR-M3](#) [NSVM1MA152WKT1G](#) [1SS388-TP](#) [RGP30D-E3/73](#) [VS-8EWF02S-M3](#) [BAV99TQ-13-F](#)
[BAV99HDW-13](#) [MMDB30-E28X](#) [IDP20C65D2XKSA1](#) [LS4148](#) [IDV15E65D2](#) [NSVM1MA152WAT1G](#)