

$V_{RRM}$	=	1200	V
$I_F (T_C \leq 135^\circ\text{C})$	=	39	A
$Q_C$	=	99	nC

### Features

- Zero Reverse Recovery Current
- Zero Forward Recovery Voltage
- Positive Temperature Coefficient on  $V_F$
- Temperature-independent Switching
- 175°C Operating Junction Temperature

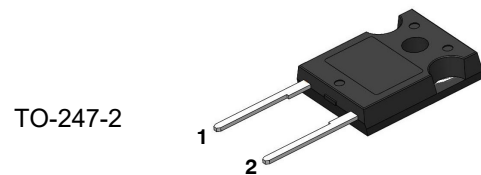
### Benefits

- Replace Bipolar with Unipolar Device
- Reduction of Heat Sink Size
- Parallel Devices Without Thermal Runaway
- Essentially No Switching Losses

### Applications

- Switch Mode Power Supplies
- Power Factor Correction
- Motor drive, PV Inverter, Wind Power Station

### Package



Part Number	Package	Marking
CH3D30120H	TO-247-2	CH3D30120H

### Maximum Ratings

Symbol	Parameter	Value	Unit	Test Conditions	Note
$V_{RRM}$	Repetitive Peak Reverse Voltage	1200	V	$T_C = 25^\circ\text{C}$	
$V_{RSM}$	Surge Peak Reverse Voltage	1200	V	$T_C = 25^\circ\text{C}$	
$V_R$	DC Blocking Voltage	1200	V	$T_C = 25^\circ\text{C}$	
$I_F$	Forward Current	39 30	A	$T_C \leq 135^\circ\text{C}$ $T_C \leq 149^\circ\text{C}$	
$I_{FSM}$	Non-Repetitive Forward Surge Current	230	A	$T_C = 25^\circ\text{C}$ , $t_p = 10\text{ms}$ , Half Sine Wave	
$P_{tot}$	Power Dissipation	384	W	$T_C = 25^\circ\text{C}$	Fig.3
$T_C$	Maximum Case Temperature	149	$^\circ\text{C}$		
$T_J, T_{STG}$	Operating Junction and Storage Temperature	-55 to 175	$^\circ\text{C}$		
	TO-247 Mounting Torque	1	Nm	M3 Screw	
$I_{FRM}$	Repetitive Forward Surge Current	200	A	$T_C = 25^\circ\text{C}$ , $t_p = 10\text{ms}$ , Half Sine Wave	
$E_{AS}$	Single Pulse Avalanche Energy (Note 1)	225	mJ	Single Pulse, $L = 2\text{mH}$ , $I_{AS} = 15\text{A}$	

### Electrical Characteristics

Symbol	Parameter	Typ.	Max.	Unit	Test Conditions	Note
$V_F$	Forward Voltage	1.45 2.2	1.8 2.5	V	$I_F = 30A, T_J = 25^\circ C$ $I_F = 30A, T_J = 175^\circ C$	Fig.1
$I_R$	Reverse Current	10 50	50 500	$\mu A$	$V_R = 1200V, T_J = 25^\circ C$ $V_R = 1200V, T_J = 175^\circ C$	Fig.2
C	Total Capacitance	1890 145 103	/	pF	$V_R = 0V, T_J = 25^\circ C, f = 1MHz$ $V_R = 400V, T_J = 25^\circ C, f = 1MHz$ $V_R = 800V, T_J = 25^\circ C, f = 1MHz$	Fig.5
$Q_C$	Total Capacitive Charge	160	/	nC	$V_R = 800V, I_F = 30A$ $di/dt = 200A/\mu s, T_J = 25^\circ C$	Fig.4

### Thermal Characteristics

Symbol	Parameter	Typ.	Unit	Note
$R_{\theta JC}$	Thermal Resistance from Junction to Case	0.39	$^\circ C/W$	Fig.6
$R_{\theta JA}$	Thermal Resistance from Junction to Ambient	80	$^\circ C/W$	
$T_{solder}$	Soldering Temperature	260	$^\circ C$	

### Typical Performance

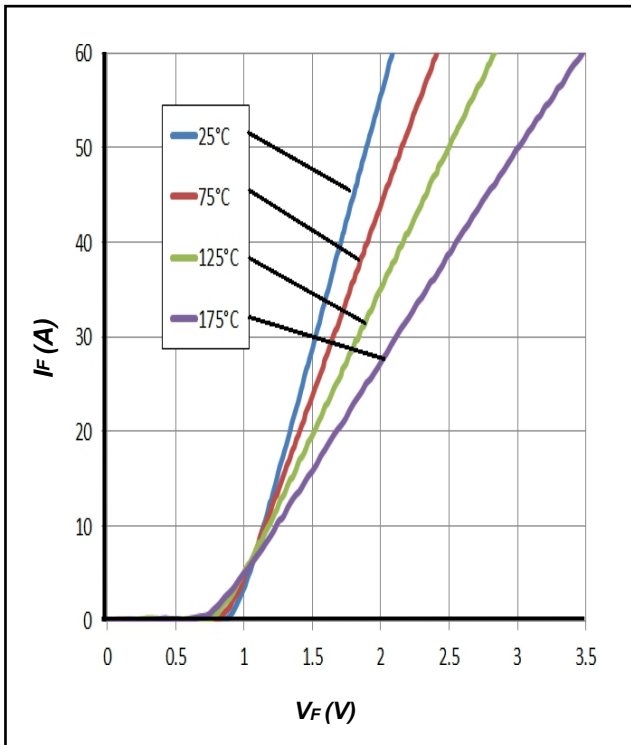


Figure 1. Forward Characteristics

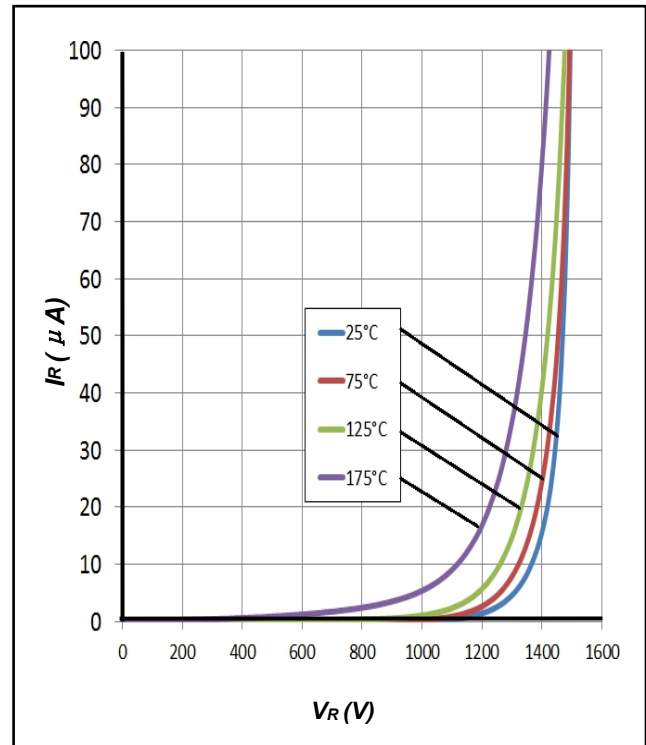


Figure 2. Reverse Characteristics

### Typical Performance

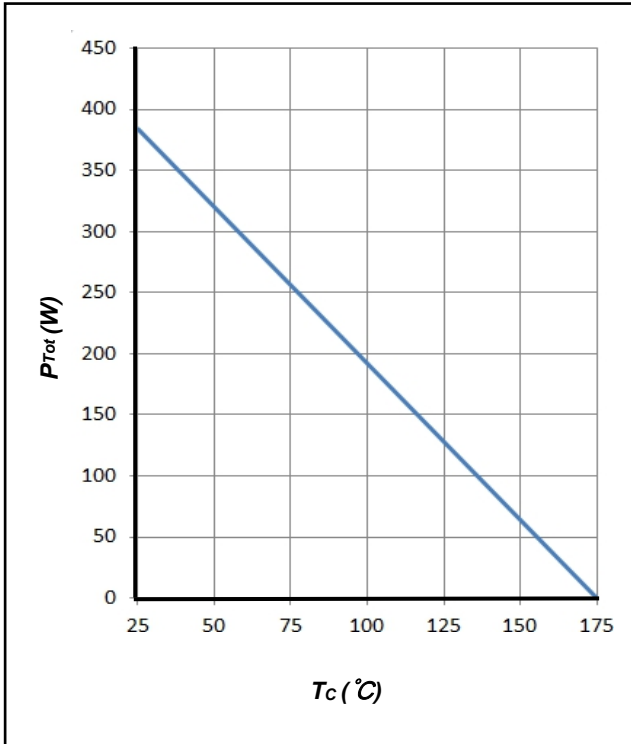


Figure 3. Power Derating

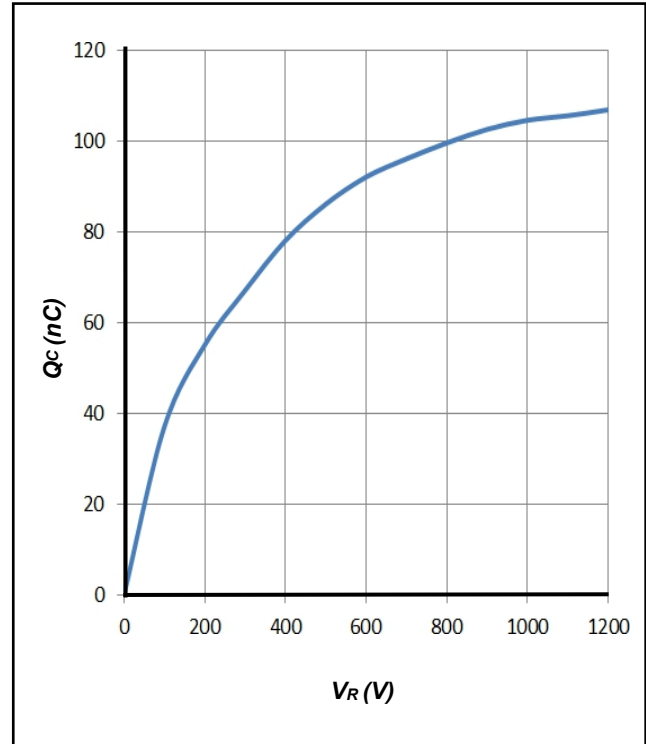


Figure 4. Total Capacitive Charge vs. Reverse Voltage

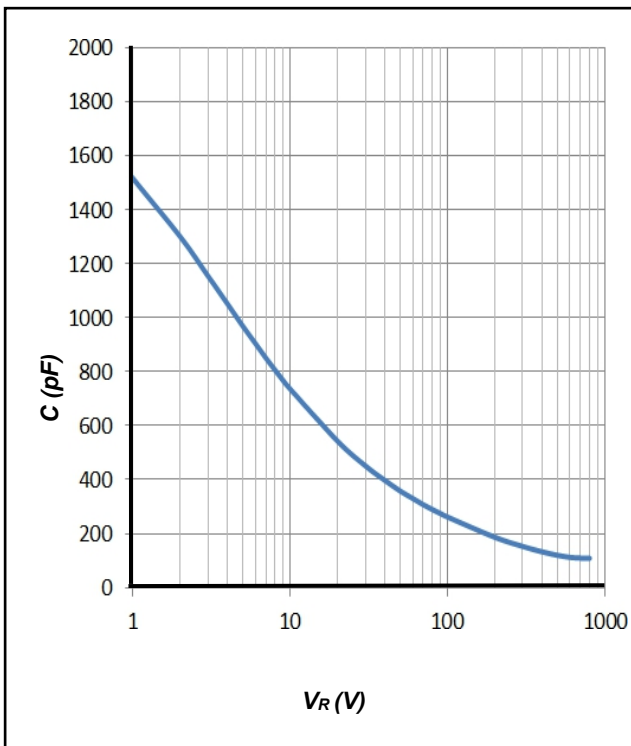


Figure 5. Total Capacitance vs. Reverse Voltage

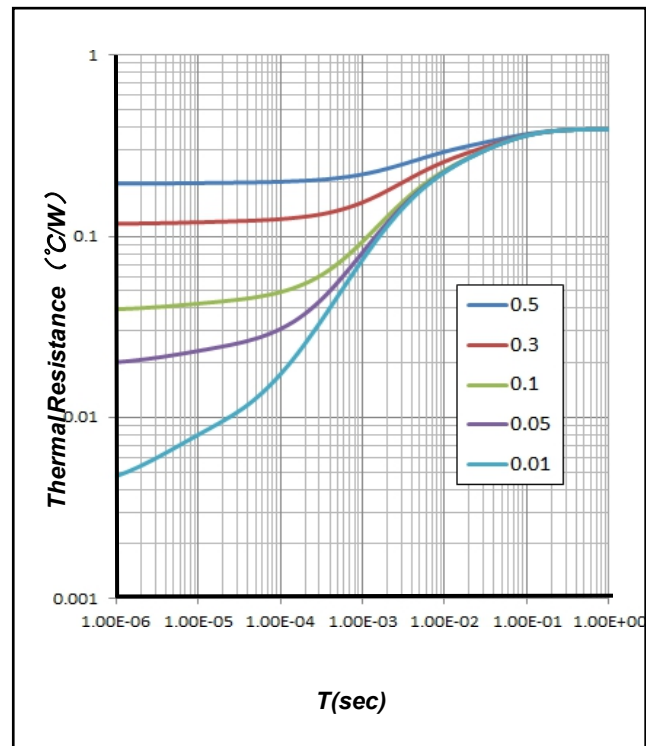
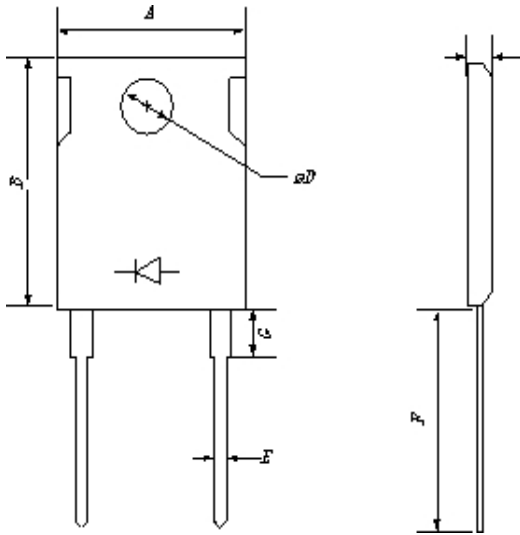


Figure 6. Transient Thermal Impedance

### Package Dimensions

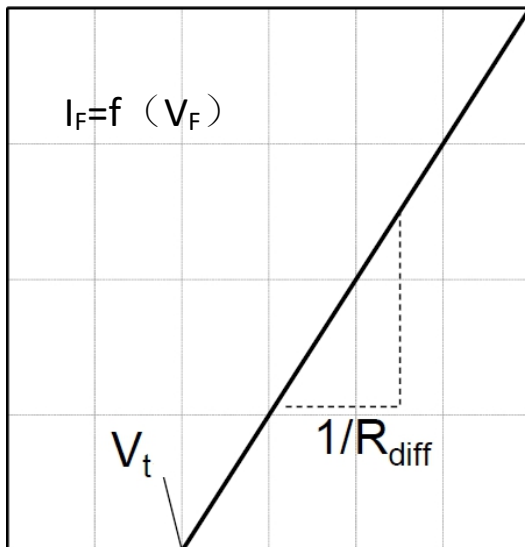
Package TO-247-2



Symbol	Min. (mm)	Typ. (mm)	Max. (mm)
A	14.18	15.75	17.33
B	18.45	20.5	22.55
C	4.50	5.00	5.50
D	3.15	3.50	3.85
E	1.08	1.20	1.32
F	18.27	20.30	22.33

### Simplified Diode Model

Equivalent IV Curve for Model



Mathematical Equation

$$V_F = V_t + I_F \times R_{diff}$$

$$V_t = -0.00115 \times T_j + 0.984 \text{ [V]}$$

$$R_{diff} = 5.76 \times 10^{-7} \times T_j^2 + 6.47 \times 10^{-5} \times T_j + 0.0171 \text{ [\Omega]}$$

Note:

$T_j$  = Diode Junction Temperature In Degrees Celsius,  
valid from 25°C to 175°C

$I_F$  = Forward Current

Less than 60A

## X-ON Electronics

Largest Supplier of Electrical and Electronic Components

*Click to view similar products for [Schottky Diodes & Rectifiers](#) category:*

*Click to view products by [LGE](#) manufacturer:*

Other Similar products are found below :

[MA4E2039](#) [MMBD301M3T5G](#) [RB160M-50TR](#) [D83C](#) [BAS16E6433HTMA1](#) [BAS 3010S-02LRH E6327](#) [BAT 54-02LRH E6327](#)  
[NRVBAF360T3G](#) [NSR05F40QNXT5G](#) [NTE555](#) [JANS1N6640](#) [SS3003CH-TL-E](#) [GA01SHT18](#) [CRS10I30A\(TE85L,QM](#) [MBRA140TRPBF](#)  
[MBRB30H30CT-1G](#) [BAT 15-04R E6152](#) [JANTX1N5712-1](#) [DMJ3940-000](#) [SB007-03C-TB-E](#) [NRVBB20100CTT4G](#) [NRVBM120LT1G](#)  
[NTSB30U100CT-1G](#) [CRG04\(T5L,TEMQ\)](#) [ACDBA1100LR-HF](#) [ACDBA1200-HF](#) [ACDBA240-HF](#) [ACDBA3100-HF](#) [CDBQC0530L-HF](#)  
[ACDBA260LR-HF](#) [ACDBA1100-HF](#) [10BQ015-M3/5BT](#) [NRVBM120ET1G](#) [VSSB410S-M3/5BT](#) [1N5819T-G](#) [PDS1040Q-13](#) [B160BQ-13-F](#)  
[SDM05U20CSP-7](#) [BAS 70-07 E6433](#) [B140S1F-7](#) [HSM560Je3/TR13](#) [DDB2265-000](#) [ZHCS506QTA](#) [HSM190Je3/TR13](#) [B330AF-13](#)  
[ACDBUC0230-HF](#) [SDM1U100S1F-7](#) [MBR10200CTF-G1](#) [CDLL5712](#) [DMF2822-000](#)