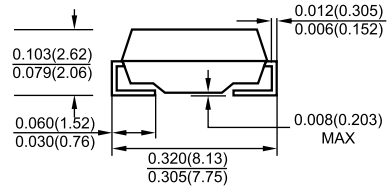
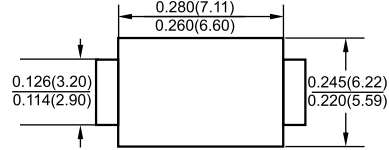


# ES3A-ES3J

## 3.0AMPS Surface Mount Super Fast Rectifiers



### SMC/DO-214AB



### Features

- ✦ Glass passivated junction chip
- ✦ For surface mounted applications
- ✦ Low profile package
- ✦ Built-in strain relief
- ✦ Ideal for automated placement
- ✦ Easy pick and place
- ✦ Super fast recovery time for high efficiency
- ✦ Glass passivated chip junction
- ✦ High temperature soldering: 260°C/10 seconds at terminals
- ✦ Plastic material used carries Underwriters Laboratory Classification 94V-0

### Mechanical Data

- ✦ Cases: Molded plastic
- ✦ Terminals: Pure tin plated, lead free.
- ✦ Polarity: Indicated by cathode band
- ✦ Weight: 0.21 gram

Dimensions in inches and (millimeters)

### Maximum Ratings and Electrical Characteristics

Rating at 25 °C ambient temperature unless otherwise specified.

Single phase, half wave, 60 Hz, resistive or inductive load.

For capacitive load, derate current by 20%

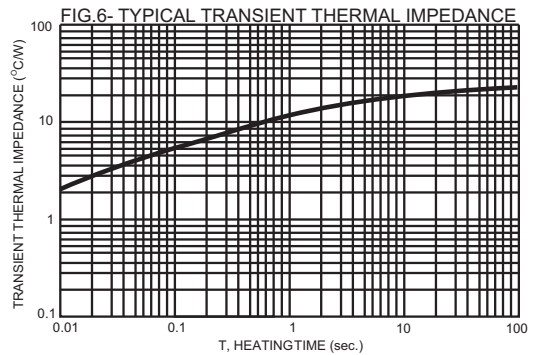
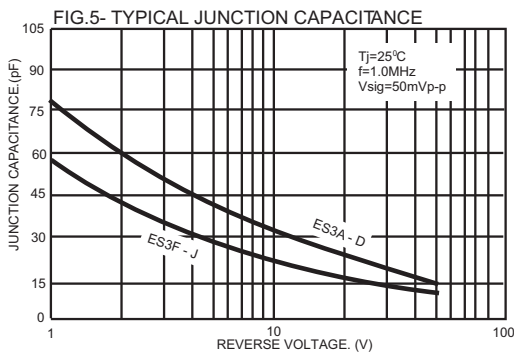
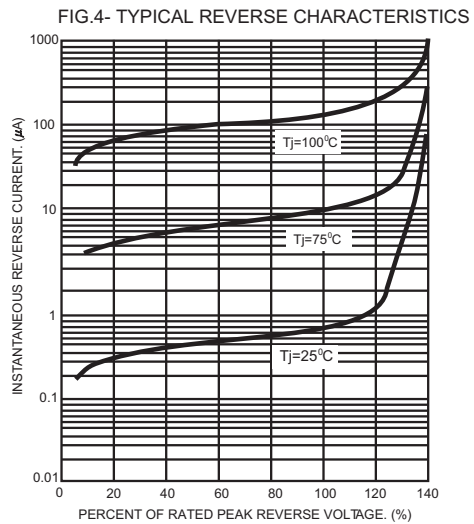
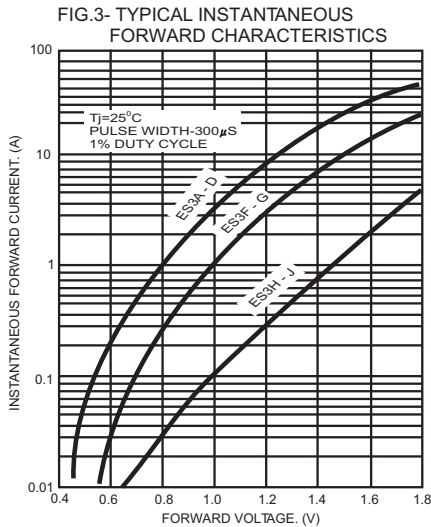
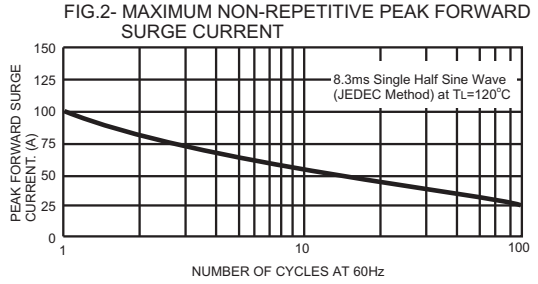
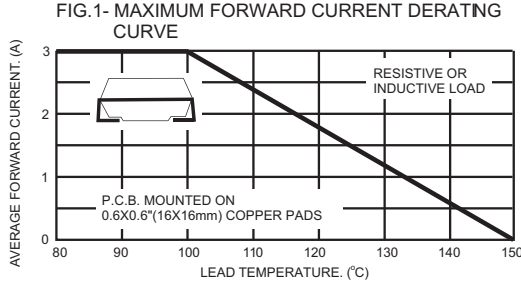
Type Number	Symbol	ES 3A	ES 3B	ES 3C	ES 3D	ES 3F	ES 3G	ES 3H	ES 3J	Units
Maximum Recurrent Peak Reverse Voltage	$V_{RRM}$	50	100	150	200	300	400	500	600	V
Maximum RMS Voltage	$V_{RMS}$	35	70	105	140	210	280	350	420	V
Maximum DC Blocking Voltage	$V_{DC}$	50	100	150	200	300	400	500	600	V
Maximum Average Forward Rectified Current See Fig. 1	$I_{(AV)}$	3.0								A
Peak Forward Surge Current, 8.3 ms Single Half Sine-wave Superimposed on Rated Load (JEDEC method) @ $T_L = 100^\circ\text{C}$	$I_{FSM}$	100								A
Maximum Instantaneous Forward Voltage @ 3.0A	$V_F$	0.95			1.3		1.7			V
Maximum DC Reverse Current @ $T_A = 25^\circ\text{C}$ at Rated DC Blocking Voltage @ $T_A = 100^\circ\text{C}$	$I_R$					10		500		uA uA
Maximum Reverse Recovery Time ( Note 1 )	$T_{rr}$					35				nS
Typical Junction Capacitance ( Note 2 )	$C_j$	45			30					pF
Typical Thermal Resistance (Note 3)	$R_{\theta JA}$ $R_{\theta JL}$					47		12		$^\circ\text{C/W}$
Operating Temperature Range	$T_J$					-55 to +150				$^\circ\text{C}$
Storage Temperature Range	$T_{STG}$					-55 to +150				$^\circ\text{C}$

- Notes:
1. Reverse Recovery Test Conditions:  $I_F=0.5\text{A}$ ,  $I_R=1.0\text{A}$ ,  $I_{RR}=0.25\text{A}$
  2. Measured at 1 MHz and Applied  $V_R=4.0$  Volts
  3. Units Mounted on P.C.B. with 0.6" x 0.6"(16mm x 16mm) Copper Pad Areas

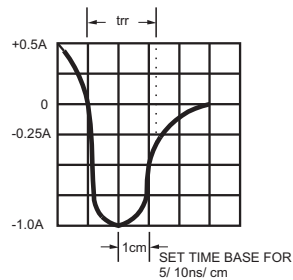
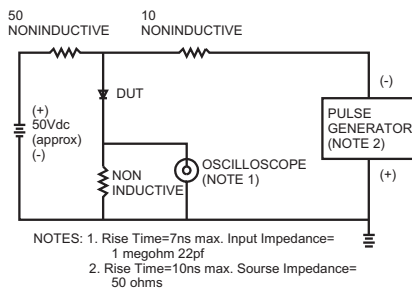
# ES3A-ES3J

## 3.0AMPS Surface Mount Super Fast Rectifiers

### RATINGS AND CHARACTERISTIC CURVES (ES3A THRU ES3J)



**FIG.7- REVERSE RECOVERY TIME CHARACTERISTIC AND TEST CIRCUIT DIAGRAM**



## X-ON Electronics

Largest Supplier of Electrical and Electronic Components

*Click to view similar products for [Rectifiers](#) category:*

*Click to view products by [LGE](#) manufacturer:*

Other Similar products are found below :

[70HFR40](#) [FR105 R0](#) [RL252-TP](#) [DLA11C-TR-E](#) [DSA17G](#) [150KR30A](#) [1N5397](#) [1N4002G](#) [1N4005-TR](#) [UFS120Je3/TR13](#) [JANS1N6640US](#)  
[481235F](#) [RRE02VS6SGTR](#) [067907F](#) [MS306](#) [70HF40](#) [T110HF60](#) [T85HFL60S02](#) [US2JFL-TP](#) [A1N5404G-G](#) [CRS04\(T5L,TEMQ\)](#)  
[CRS12\(T5L,TEMQ\)](#) [ACGRB207-HF](#) [CLH07\(TE16L,Q\)](#) [CLH03\(TE16L,Q\)](#) [ACGRC307-HF](#) [ACEFC304-HF](#) [NTE6356](#) [NTE6359](#) [85HFR60](#)  
[40HFR60](#) [70HF120](#) [85HFR80](#) [D126A45C](#) [SCF7500](#) [D251N08B](#) [SCHJ22.5K](#) [SM100](#) [SCPA2](#) [SDHD5K](#) [VS-12FL100S10](#) [ACGRA4001-](#)  
[HF](#) [ACURA107-HF](#) [D1821SH45T PR](#) [D1251S45T](#) [NTE6358](#) [NTE5850](#) [NTE5819](#) [NTE5837](#) [NTE5892](#)