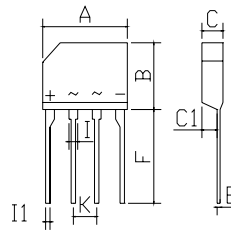


FEATURES

- Rating to 1000V PRV
- Surge overload rating to 70Amperes peak
- Ideal for printed circuit board
- Reliable low cost construction utilizing molded plastic technique results in inexpensive product
- Lead solderable per MIL-STD-202 method 208
- Plastic material has UL flammability classification 94V-O
- Glass passivated chip junctions



GBP		
Dim	Min	Max
A	14.45	14.85
B	10.30	10.70
C	3.45	3.75
C1	2.00	2.40
E	0.40	0.60
F	14.30	14.90
I	1.30	1.60
I1	0.60	0.90
K	3.75	4.30

All Dimensions in mm

Maximum Ratings (@TA = 25°C unless otherwise specified)

Characteristic	Symbol	GBP 3005	GBP 301	GBP 302	GBP 304	GBP 306	GBP 307	GBP 308	GBP 310	UNITS
Maximum recurrent peak reverse voltage	V_{RRM}	50	100	200	400	600	700	800	1000	V
Maximum RMS voltage	V_{RMS}	35	70	140	280	420	490	560	700	V
Maximum DC blocking voltage	V_{DC}	50	100	200	400	600	700	800	1000	V
Maximum average forward Output current @TA=25°C	$I_{F(AV)}$	3.0								A
Peak forward surge current 8.3ms single half-sine-wave superimposed on rated load	I_{FSM}	70								A
I ² t Rating for fusing @Tj=25°C	I ² t	33.6								A ² S

Thermal Characteristics

Characteristic	Symbol	GBP 3005	GBP 301	GBP 302	GBP 304	GBP 306	GBP 307	GBP 308	GBP 310	UNITS
Typical Thermal Resistance (Note)	$R_{\theta JA}$ $R_{\theta JC}$ $R_{\theta JL}$	45 2.5 10								°C/W
Operating junction temperature range	T_J	- 55 ---- + 150								°C
Storage temperature range	T_{STG}	- 55 ---- + 150								°C

Electrical Characteristics (@TA = 25°C unless otherwise specified)

Characteristic	Symbol	GBP 3005	GBP 301	GBP 302	GBP 304	GBP 306	GBP 307	GBP 308	GBP 310	UNITS
Maximum instantaneous forward voltage @3A	V_F	1.1								V
Maximum reverse current @TA=25°C at rated DC blocking voltage @TA=100°C	I_R	5.0 0.5								μ A mA

RATINGS AND CHARACTERISTICS CURVES

($T_A = 25^\circ\text{C}$ unless otherwise noted)

FIG1:Io-Tc Curve

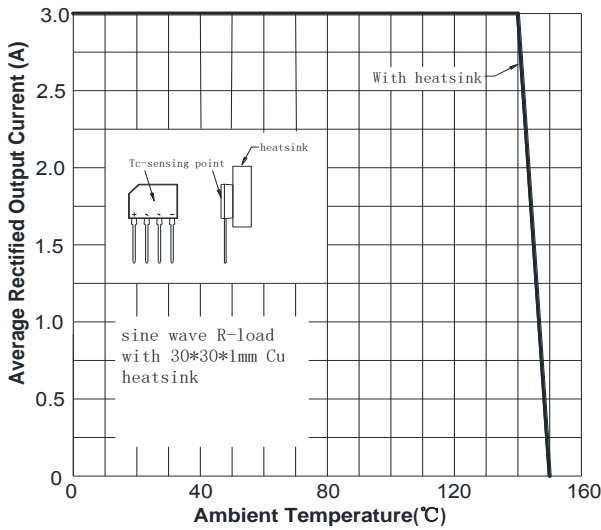


FIG2:Surge Forward Current Capability

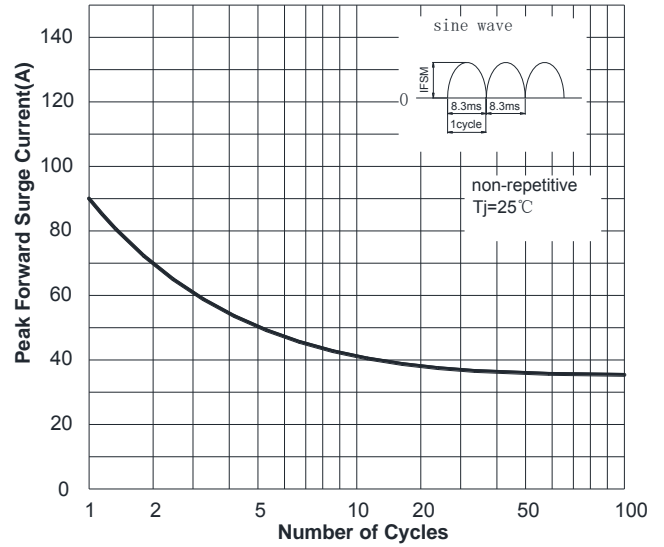


FIG3: Forward Voltage

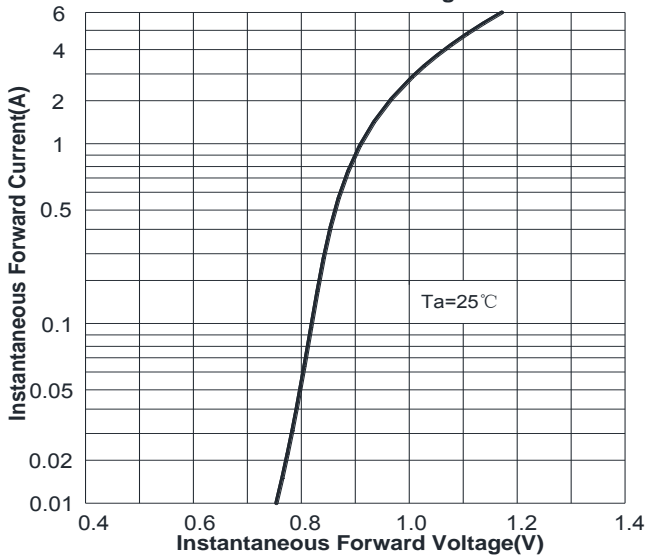
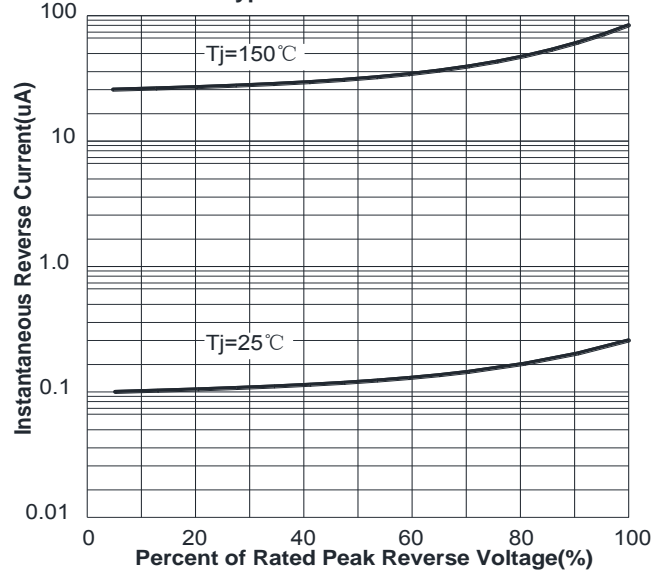


FIG4:Typical Reverse Characteristics



Device	Package	Shipping
GBP3005--GBP310	GBP	500Units/Box

X-ON Electronics

Largest Supplier of Electrical and Electronic Components

Click to view similar products for [Bridge Rectifiers](#) category:

Click to view products by [LGE](#) manufacturer:

Other Similar products are found below :

[MB2510](#) [MB252](#) [MB356G](#) [MB358G](#) [90MT160KPBF](#) [GBJ1504-BP](#) [GBU10B-BP](#) [GBU15K-BP](#) [GBU4A-BP](#) [GBU4D-BP](#) [GBU6B-E3/45](#)
[DB101-BP](#) [DF01](#) [DF10SA-E345](#) [BU1508-E3/45](#) [BU1510-E3/45](#) [KBPC50-10S](#) [RS405GL-BP](#) [GBJ1502-BP](#) [GBU6M](#) [GSIB1520-E3/45](#)
[2KBB10](#) [36MB140A](#) [TB102M](#) [MB1510](#) [MB86](#) [TL401G](#) [MDA920A2](#) [TU602](#) [TU810](#) [MP5010W-BP](#) [MP501W-BP](#) [MP502-BP](#)
[BR84DTP204](#) [BU1508-E3/51](#) [KBPC25-02](#) [VS-110MT120KPBF](#) [VS-2KBB60](#) [VS-60MT120KPBF](#) [VS-60MT80KPBF](#) [DB105-BP](#) [DF1510S](#)
[VS-40MT160PAPBF](#) [VISKBU8K-E4/51](#) [36MT100](#) [GBU4G-BP](#) [GBU6B-E3/51](#) [DF15005S-E3/77](#) [GSIB15A80-E3/45](#) [DB104-BP](#)