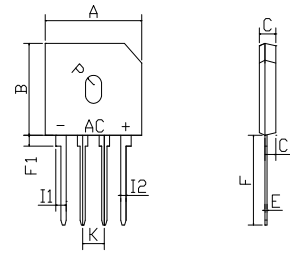


### FEATURES

- Ideal for printed circuit board
- Reliable low cost construction utilizing molded plastic technique
- Plastic material has U/L flammability classification 94V-O
- Mounting position: Any
- Glass passivated chip junctions



GBU		
Dim	Min	Max
A	22.00	22.40
B	18.40	18.80
C	3.40	3.95
C1	2.50	3.00
E	0.40	0.60
F	17.00min	
F1	1.70	2.30
I1	2.30	2.60
I2	0.95	1.25
K	4.70	5.30
P	R1.9typical	
All Dimensions in mm		

### Maximum Ratings (@TA = 25°C unless otherwise specified)

Characteristic	Symbol	GBU15A	GBU15B	GBU15D	GBU15G	GBU15J	GBU15K	GBU15M	UNITS
Maximum recurrent peak reverse voltage	$V_{RRM}$	50	100	200	400	600	800	1000	V
Maximum RMS voltage	$V_{RMS}$	35	70	140	280	420	560	700	V
Maximum DC blocking voltage	$V_{DC}$	50	100	200	400	600	800	1000	V
Maximum average forward Output current @T <sub>c</sub> =100°C	$I_{F(AV)}$	15.0							A
Peak forward surge current 8.3ms single half-sine-wav superimposed on rated load	$I_{FSM}$	240							A
I <sup>2</sup> t Rating for fusing @T <sub>j</sub> =25°C	I <sup>2</sup> t	239							A <sup>2</sup> S

### Thermal Characteristics

Characteristic	Symbol	GBU15A	GBU15B	GBU15D	GBU15G	GBU15J	GBU15K	GBU15M	UNITS
Typical junction capacitance per leg (note 3)	$C_J$	211				94			p F
Typical thermal resistance per leg (note 2) (note 1)	$R_{\theta JA}$ $R_{\theta JC}$	21				2.2			°C/W
Operating junction temperature range	$T_J$	- 55 ---- + 150							°C
Storage temperature range	$T_{STG}$	- 55 ---- + 150							°C

### Electrical Characteristics (@TA = 25°C unless otherwise specified)

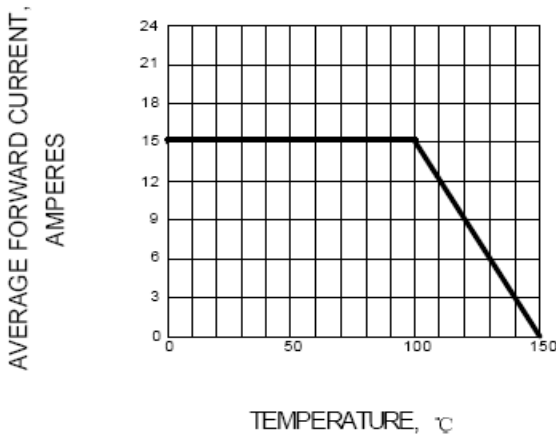
Characteristic	Symbol	GBU15A	GBU15B	GBU15D	GBU15G	GBU15J	GBU15K	GBU15M	UNITS
Maximum instantaneous forward voltage @7.5A @15A	$V_F$	1.0				1.1			V
Maximum reverse current @T <sub>A</sub> =25°C at rated DC blocking voltage @T <sub>A</sub> =125°C	$I_R$	5.0				500			μ A

NOTE: 1. Unit case mounted on 3.2x3.2x0.12" thick (6.2x8.2x0.3cm) Al. Plate

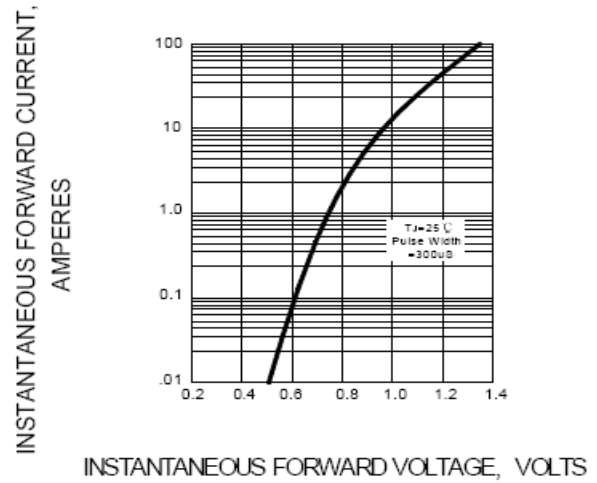
2. Units mounted in free air, no heat sink on P.C.B., 0.5x0.5"(12x12mm) copper pads, 0.375"(9.5mm) lead length.

3. Measured at 1.0 MHz and applied reverse voltage of 4.0 volts.

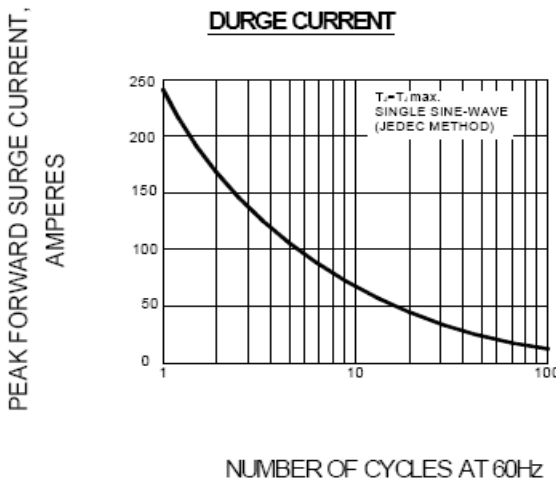
**FIG.1 – DERATING CURVE FOR OUTPUT RECTIFIED CURRENT**



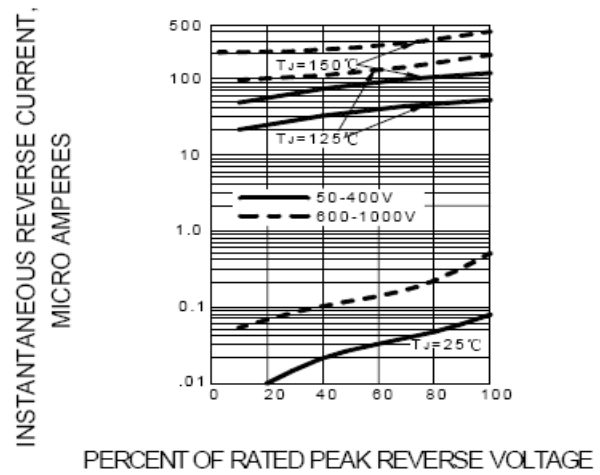
**FIG.2 – TYPICAL FORWARD CHARACTERISTIC**



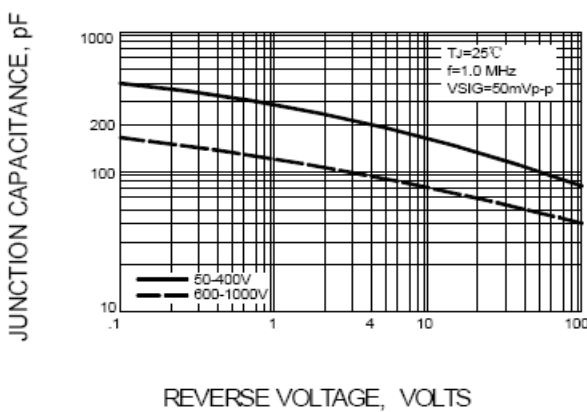
**FIG.3 – MAXIMUM NON-REPETITIVE PEAK FORWARD SURGE CURRENT**



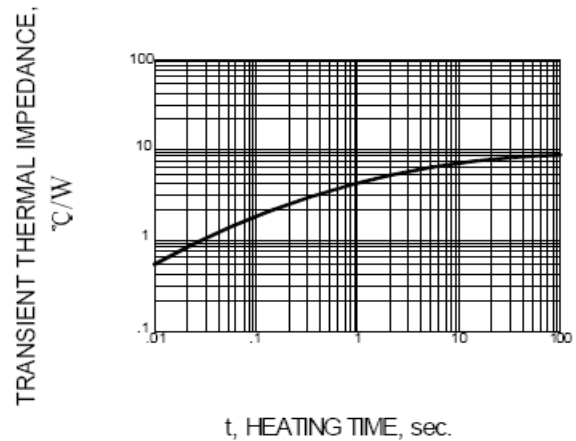
**FIG.4 – TYPICAL REVERSE CHARACTERISTIC**



**FIG.5 – TYPICAL JUNCTION CAPACITANCE PER LEG**



**FIG.6 – TYPICAL TRANSIENT THERMAL IMPEDANCE**



Device	Package	Shipping
GBU15A--GBU15M	GBU	500 Units/Box

## X-ON Electronics

Largest Supplier of Electrical and Electronic Components

*Click to view similar products for [Bridge Rectifiers](#) category:*

*Click to view products by [LGE](#) manufacturer:*

Other Similar products are found below :

[MB2510](#) [MB252](#) [MB356G](#) [MB358G](#) [90MT160KPBF](#) [GBJ1504-BP](#) [GBU10B-BP](#) [GBU15K-BP](#) [GBU4A-BP](#) [GBU4D-BP](#) [GBU6B-E3/45](#)  
[DB101-BP](#) [DF01](#) [DF10SA-E345](#) [BU1508-E3/45](#) [BU1510-E3/45](#) [KBPC50-10S](#) [RS405GL-BP](#) [GBJ1502-BP](#) [GBU6M](#) [GSIB1520-E3/45](#)  
[2KBB10](#) [36MB140A](#) [TB102M](#) [MB1510](#) [MB86](#) [TL401G](#) [MDA920A2](#) [TU602](#) [TU810](#) [MP5010W-BP](#) [MP501W-BP](#) [MP502-BP](#)  
[BR84DTP204](#) [BU1508-E3/51](#) [KBPC25-02](#) [VS-110MT120KPBF](#) [VS-2KBB60](#) [VS-60MT120KPBF](#) [VS-60MT80KPBF](#) [DB105-BP](#) [DF1510S](#)  
[VS-40MT160PAPBF](#) [VISKBU8K-E4/51](#) [36MT100](#) [GBU4G-BP](#) [GBU6B-E3/51](#) [DF15005S-E3/77](#) [GSIB15A80-E3/45](#) [DB104-BP](#)