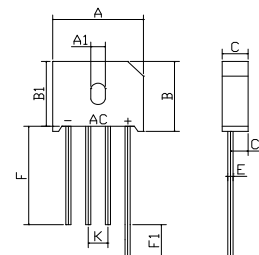


### FEATURES

- UL Recognized File
- High surge current capability
- Ideal for printed circuit board
- Reliable low cost construction technique results in inexpensive product
- High temperature soldering guaranteed:  
250 / 10 seconds / 0.375" ( 9.5mm ) lead length at 5lbs.
- Mounting position: Any



KBU		
Dim	Min	Max
A	22.80	23.20
A1	3.70	4.10
B	18.90	19.30
B1	17.60	18.00
C	6.55	6.85
C1	4.50	4.80
E	Ø1.20	Ø1.40
F	25min	
F1	4min	
K	4.70	5.30
All Dimensions in mm		

### Maximum Ratings (@TA = 25°C unless otherwise specified)

Characteristic	Symbol	KBU6005	KBU601	KBU602	KBU604	KBU606	KBU608	KBU610	UNITS
Maximum recurrent peak reverse voltage	$V_{RRM}$	50	100	200	400	600	800	1000	V
Maximum RMS voltage	$V_{RMS}$	35	70	140	280	420	560	700	V
Maximum DC blocking voltage	$V_{DC}$	50	100	200	400	600	800	1000	V
Maximum average forward Output current @TA=65°C	$I_{F(AV)}$	6.0							A
Peak forward surge current 8.3ms single half-sine-wave superimposed on rated load	$I_{FSM}$	175.0							A
I <sup>2</sup> t Rating for fusing @Tj=25°C	I <sup>2</sup> t	127							A <sup>2</sup> S

### Thermal Characteristics

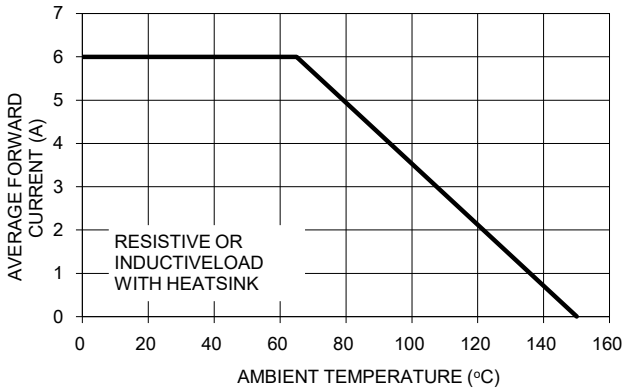
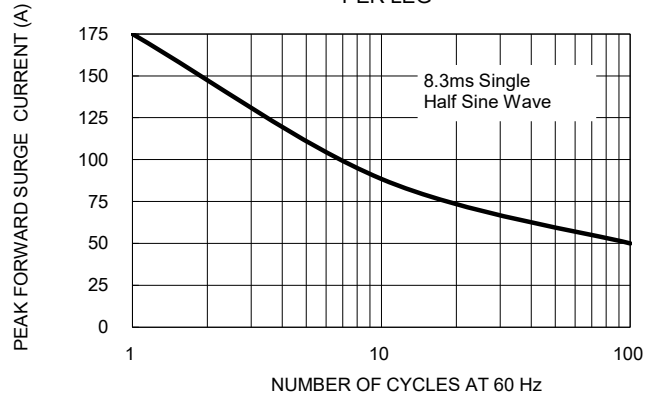
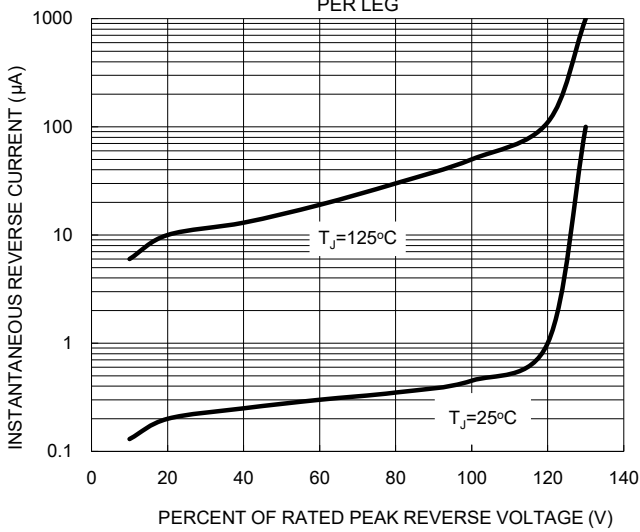
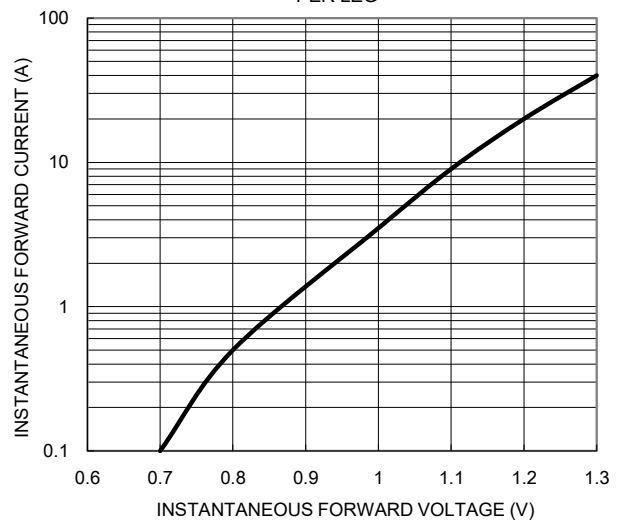
Characteristic	Symbol	KBU6005	KBU601	KBU602	KBU604	KBU606	KBU608	KBU610	UNITS
Typical thermal resistance	$R_{\theta JA}$	8.6							°C/W
	$R_{\theta JC}$	3.1							
Operating junction temperature range	$T_J$	- 55 ---- + 125							°C
Storage temperature range	$T_{STG}$	- 55 ---- + 150							°C

### Electrical Characteristics (@TA = 25°C unless otherwise specified)

Characteristic	Symbol	KBU6005	KBU601	KBU602	KBU604	KBU606	KBU608	KBU610	UNITS	
Maximum instantaneous forward voltage @3.0A @6.0A	$V_F$					1.0				V
						1.1				
Maximum reverse current @TA=25 °C at rated DC blocking voltage @TA=100°C	$I_R$					5.0				µ A
						0.5				mA

**RATINGS AND CHARACTERISTICS CURVES**

( $T_A=25^\circ\text{C}$  unless otherwise noted)

**FIG. 1 MAXIMUM DERATING CURVE FOR OUTPUT CURRENT**

**FIG. 2 MAXIMUM FORWARD SURGE CURRENT PER LEG**

**FIG. 3 TYPICAL REVERSE CHARACTERISTICS PER LEG**

**FIG. 4 TYPICAL FORWARD CHARACTERISTICS PER LEG**


Device	Package	Shipping
KBU6005--KBU610	KBU	400 Units/Box

## X-ON Electronics

Largest Supplier of Electrical and Electronic Components

*Click to view similar products for [Bridge Rectifiers](#) category:*

*Click to view products by [LGE](#) manufacturer:*

Other Similar products are found below :

[MB2510](#) [MB252](#) [MB356G](#) [MB358G](#) [GBJ1504-BP](#) [GBU10B-BP](#) [GBU15K-BP](#) [GBU4A-BP](#) [GBU4D-BP](#) [DB101-BP](#) [DF01](#) [DF10SA-E345](#)  
[KBPC50-10S](#) [RS405GL-BP](#) [GBJ1502-BP](#) [GBU6M](#) [TB102M](#) [MB1510](#) [MB86](#) [TL401G](#) [MDA920A2](#) [TU602](#) [TU810](#) [MP5010W-BP](#)  
[MP501W-BP](#) [MP502-BP](#) [KBPC25-02](#) [VBO160-12NO7](#) [VS-110MT120KPBF](#) [VS-60MT80KPBF](#) [DB105-BP](#) [DF1510S](#) [VS-](#)  
[40MT160PAPBF](#) [GBU4G-BP](#) [GSIB15A80-E3/45](#) [DB104-BP](#) [D3SB60](#) [TB354](#) [GBJ2504-BP](#) [26MB100A](#) [B1S-G](#) [VS-40MT160KPBF](#)  
[VUO162-16NO7](#) [ABS10-G](#) [GBU6B-BP](#) [GBJ1508-BP](#) [BR5010-G](#) [ABS6-G](#) [B125C800G-E4/51](#) [MSB15MH-13](#)