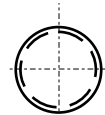
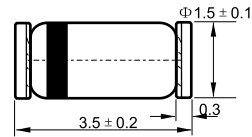



MINI MELF


Dimension in millimeters

Features

- ✧ Surge overload ratings to 2 amperes peak
- ✧ Ideal for printed circuit board
- ✧ Reliable low cost construction utilizing molded plastic technique results in inexpensive product
- ✧ Terminal : Pure tin plated lead free,
- ✧ Mounting position: Any
- ✧ High temperature soldering : 260°C / 10 seconds at terminals
- ✧ Weight: 0.12 gram

Maximum Ratings and Electrical Characteristics

Rating at 25°C ambient temperature unless otherwise specified.

Single phase, half wave, 60 Hz, resistive or inductive load.

For capacitive load, derate current by 20%

Maximum Ratings

Type Number	Symbol	Value	Units
Repetitive Peak Reverse Voltage	VRRM	100	V
Reverse Voltage	VR	75	V
Forward Repetitive Peak Current (Note 1)	IFRM	500	mA
Forward Continuous Current (Note 1)	IFM	300	mA
Average Forward Current	IF (AV)	150	mA
Peak Forward Surge Current tp=1uS	IFSM	2.0	A
Power Dissipation (Note 1)	Pd	500	mW
Thermal Resistance Junction to Ambient Air (Note 1)	RθJA	350	K/W
Operating and Storage Temperature Range	TJ, TSTG	-65 to + 175	°C

Electrical Characteristics

Type Number	Symbol	Min	Max	Units
Forward Voltage IF=5.0mA IF= 50mA	VF	0.62 -	0.72 1.0	V
Peak Reverse Current VR=20V VR=20V, Tj=150°C VR=75V	IR	-	25 50 5	nA uA uA
Junction Capacitance VR=0, f=1.0MHz	Cj	-	4.0	pF
Reverse Recovery Time (Note 2)	trr	-	4.0	nS

- Notes:
1. Valid Provided that Terminals are Kept at Ambient Temperature.
 2. Reverse Recovery Test Conditions: IF=10mA, VR=6V, Irr=0.1 x IR, RL=100Ω.

RATINGS AND CHARACTERISTIC CURVES (LL4148)

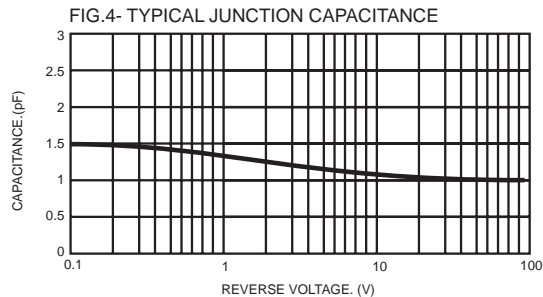
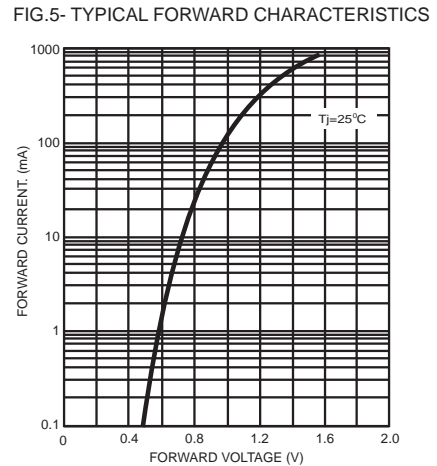
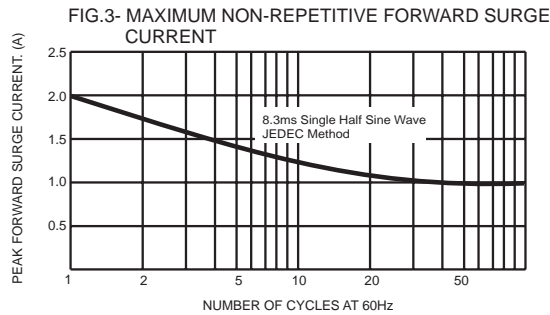
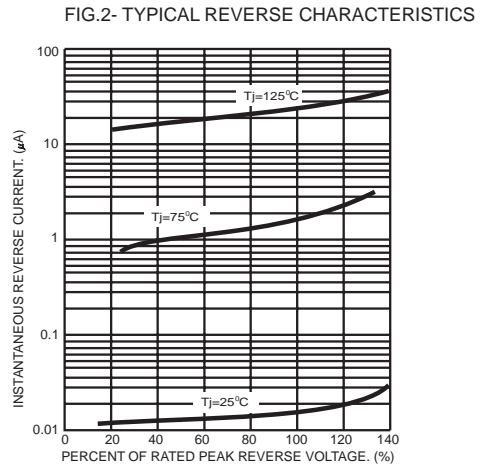
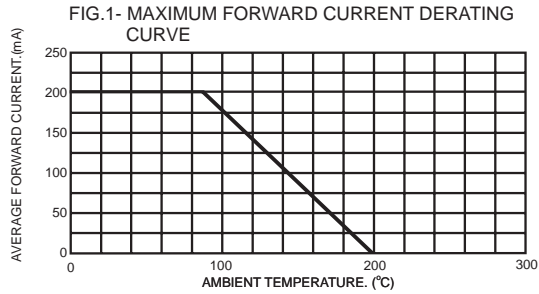
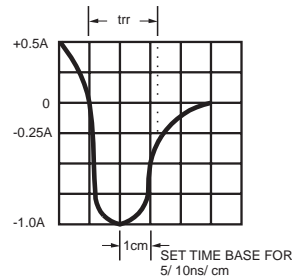
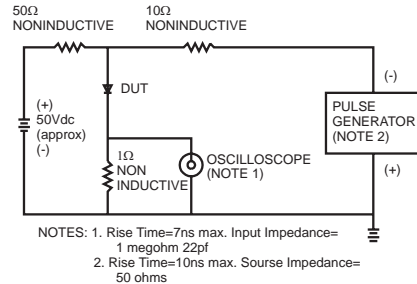


FIG.6- REVERSE RECOVERY TIME CHARACTERISTIC AND TEST CIRCUIT DIAGRAM



X-ON Electronics

Largest Supplier of Electrical and Electronic Components

Click to view similar products for [Diodes - General Purpose, Power, Switching category](#):

Click to view products by [LGE manufacturer](#):

Other Similar products are found below :

[MCL4151-TR3](#) [MMBD3004S-13-F](#) [RD0306T-H](#) [RD0506LS-SB-1H](#) [RGP30G-E373](#) [DSE010-TR-E](#) [BAQ333-TR](#) [BAQ335-TR](#) [BAQ33-GS18](#) [BAS1602VH6327XT](#) [BAV17-TR](#) [BAV19-TR](#) [BAV301-TR](#) [BAW27-TAP](#) [HSC285TRF-E](#) [NSVBAV23CLT1G](#) [NTE525](#) [1SS181-TP](#) [1SS184-TP](#) [1SS193,LF](#) [1SS193-TP](#) [1SS400CST2RA](#) [SBAV99LT3G](#) [SDAA13](#) [LL4448-GS18](#) [SHN2D02FUTW1T1G](#) [LS4150GS18](#) [LS4151GS08](#) [SMMD7000LT3G](#) [FC903-TR-E](#) [1N4449](#) [1N4934-E3/73](#) [1SS226-TP](#) [APT100DL60HJ](#) [RFUH20TB3S](#) [RGP30G-E354](#) [RGP30M-E3/73](#) [D291S45T](#) [MCL4151-TR](#) [BAS 16-02V H6327](#) [BAS 21U E6327](#) [BAS 28 E6327](#) [BAS33-TAP](#) [BAS 70-02V H6327](#) [BAV300-TR](#) [BAV303-TR3](#) [BAW27-TR](#) [BAW56DWQ-7-F](#) [BAW56M3T5G](#) [BAW75-TAP](#)