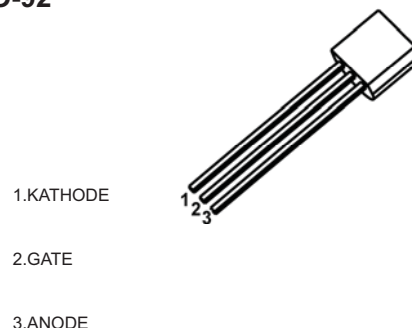


MCR100- 6,- 8 Silicon Controlled Rectifier

MAIN FEATURES

Symbol		value	unit
$I_{T(RMS)}$		0.8	A
V_{DRM} / V_{RRM}	MCR100-6	400	V
	MCR100-8	600	
T_j	Junction Temperature	-40 ~ 125	°C
T_{stg}	Storage Temperature	-55 ~ 150	°C

TO-92



1.KATHODE

2.GATE

3.ANODE

DESCRIPTION

Logic level sensitive gate triac intended to be interfaced directly to microcontrollers, logic integrated circuits and other low power gate trigger circuits.

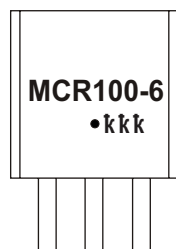
FEATURES

- Blocking voltage to 400 V (MCR100-6)
- RMS on-state current to 0.8 A
- General purpose switching

APPLICATIONS

- General purpose switching
- Phase control applications
- Solid state relays

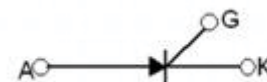
MARKING



MCR100-6=Device code
 Solid dot=Green molding compound device,
 if none,the normal device
 XXX=Code

K G A

Equivalent Circuit



ORDERING INFORMATION

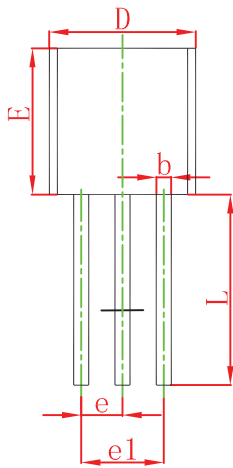
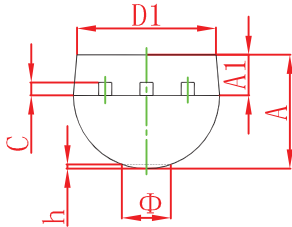
Part Number	Package	Packing Method	Pack Quantity
MCR100-6	TO-92	Bulk	1000pcs/Bag
MCR100-6-TA	TO-92	Tape	2000pcs/Box

T_a=25 °C unless otherwise specified

Parameter	Symbol	Test conditions	Min	Max	Unit	
On state voltage *	V _{TM}	I _{TM} =1A		1.7	V	
Gate trigger voltage	V _{GT}	V _{AK} =7V		0.8	V	
Peak Repetitive forward and reverse blocking voltage MCR100-6 MCR100-8	V _{DRM} /V _{RRM}	I _{DRM} /I _{RRM} = 10 μA	400 600		V	
Peak forward or reverse blocking Current	I _{DRM} I _{RRM}	V _{AK} = Rated V _{DRM} or V _{RRM}		10	μA	
Holding current	I _H	I _{HL} =20mA , V _{AK} =7V		5	mA	
Gate trigger current	I _{GT}	A2		5	15	μA
		A1	V _{AK} =7V	15	30	μA
		A		30	80	μA
		B		80	200	μA

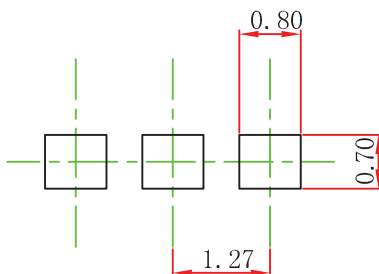
* Forward current applied for 1 ms maximum duration, duty cycle≤1%.

TO-92 Package Outline Dimensions



Dimension	Dimension in Millimeter		Dimension in Inche	
	Min	Max	Min	Max
A	3.300	3.700	0.130	0.146
A1	1.100	1.400	0.043	0.055
b	0.380	0.550	0.015	0.022
c	0.360	0.510	0.014	0.020
D	4.300	4.700	0.169	0.185
D1	3.430		0.135	
E	4.300	4.700	0.169	0.185
e	1.270 TYP		0.050 TYP	
e1	2.440	2.640	0.096	0.104
L	14.100	14.500	0.555	0.571
Φ		1.600		0.063
h	0.000	0.380	0.000	0.015

TO-92 Suggested Pad Layout



Note:

1. Controlling dimension: in millimeters.
2. General tolerance: ± 0.05 mm.
3. The pad layout is for reference purposes only.

X-ON Electronics

Largest Supplier of Electrical and Electronic Components

Click to view similar products for [Triacs](#) category:

Click to view products by [LGE](#) manufacturer:

Other Similar products are found below :

[BT137-600-0Q](#) [OT415Q](#) [2N6075A](#) [NTE5688](#) [BTA2008W-800D,135](#) [D31410](#) [ACS102-5T1](#) [ACS102-5TA](#) [MAC97A4G](#) [Z0107MAG](#)
[Z0107MARL1G](#) [Z0109MARLRPG](#) [MAC97A8-TA](#) [BT131W-800](#) [BT138S-800E](#) [BT137S-800E](#) [BT136S-600D](#) [BTA08-600TWRG](#)
[X0405MF-252](#) [MAC97A8-23-3L](#) [MCR100-8-23-3L](#) [BTA24-800B](#) [BT151-600R](#) [BT131](#) [BTA41-1200B](#) [MCR16](#) [MCR100-8](#) [MCR16](#)
[BT131-800D](#) [BT134-800E](#) [BT138-800E](#) [MCR100-8](#) [BTA12-800BWRG\(UMW\)](#) [BTA24-600BWRG\(UMW\)](#) [BTA24-800BWRG\(UMW\)](#)
[BTA12-600BWRG\(UMW\)](#) [BTA16-600CRG\(UMW\)](#) [BTA12-600CRG\(UMW\)](#) [BS61089B-8](#) [BT134W-600E](#) [BT134-600E](#) [JR0405S3](#)
[BCR12PM](#) [MAC97A6](#) [MAC4DLM-1G](#) [BT137-600E,127](#) [BTA08-800BW3G](#) [BTA140-800,127](#) [BTA30-600CW3G](#) [BTA30-600CW3G](#)