

**VOLTAGE RANGE: 50 --- 600 V**  
**CURRENT: 1.0 A**



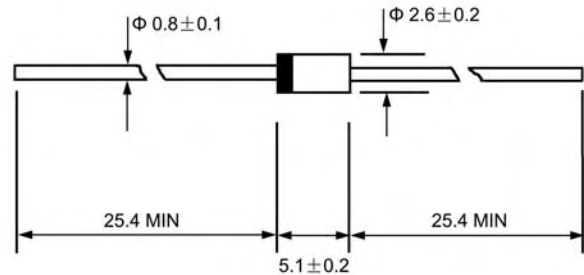
**DO - 41**

## Features

- ◇ Low cost
- ◇ Low leakage
- ◇ Low forward voltage drop
- ◇ High current capability
- ◇ Easily cleaned with alcohol, Isopropanol and similar solvents
- ◇ The plastic material carries U/L recognition 94V-0

## Mechanical Data

- ◇ Case: JEDEC DO--41, molded plastic
- ◇ Polarity: Color band denotes cathode
- ◇ Weight: 0.012 ounces, 0.34 grams
- ◇ Mounting position: Any



Dimensions in millimeters

## MAXIMUM RATINGS AND ELECTRICAL CHARACTERISTICS

Ratings at 25°C ambient temperature unless otherwise specified.

Single phase, half wave, 60 Hz, resistive or inductive load. For capacitive load, derate by 20%.

		MUR 105	MUR 110	MUR 115	MUR 120	MUR 130	MUR 140	MUR 150	MUR 160	UNITS
Maximum recurrent peak reverse voltage	$V_{RRM}$	50	100	150	200	300	400	500	600	V
Maximum RMS voltage	$V_{RMS}$	35	70	105	140	210	280	350	420	V
Maximum DC blocking voltage	$V_{DC}$	50	100	150	200	300	400	500	600	V
Maximum average forward rectified current 9.5mm lead length, @ $T_A=75^\circ\text{C}$	$I_{F(AV)}$	1.0								A
Peak forward surge current 8.3ms single half-sine-wave superimposed on rated load @ $T_J=125^\circ\text{C}$	$I_{FSM}$	35.0								A
Maximum instantaneous forward voltage @ 1.0A	$V_F$	0.875				1.25				V
Maximum reverse current @ $T_A=25^\circ\text{C}$ at rated DC blocking voltage @ $T_A=100^\circ\text{C}$	$I_R$	2.0				5.0				$\mu\text{A}$
		50				150				
Maximum reverse recovery time (Note1)	$t_{rr}$	25				50				ns
Typical junction capacitance (Note2)	$C_J$	22								pF
Typical thermal resistance (Note3)	$R_{\theta JA}$	50								$^\circ\text{C/W}$
Operating junction temperature range	$T_J$	- 55 ----- + 150								$^\circ\text{C}$
Storage temperature range	$T_{STG}$	- 55 ----- + 150								$^\circ\text{C}$

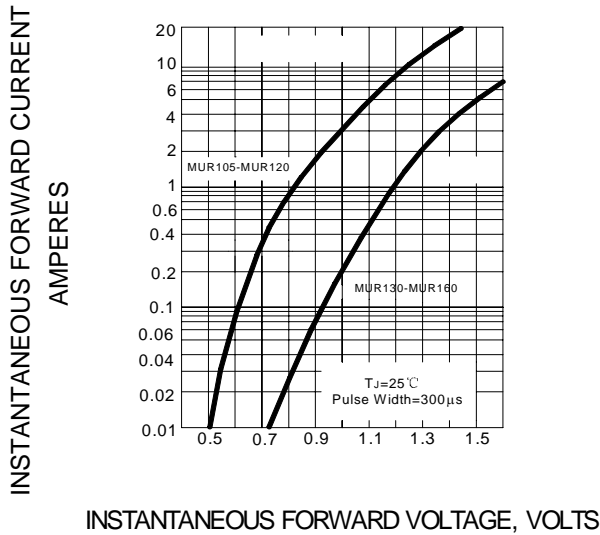
NOTE: 1. Measured with  $I_F=0.5\text{A}$ ,  $I_R=1\text{A}$ ,  $I_{rr}=0.25\text{A}$ .

2. Measured at 1.0MHz and applied reverse voltage of 4.1V DC.

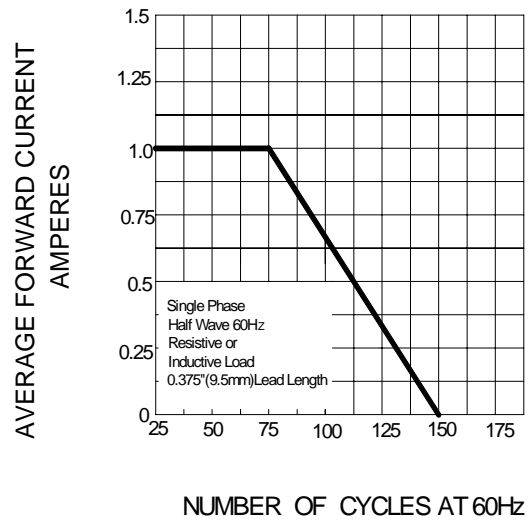
3. Thermal resistance from junction to ambient.

## Ratings AND Characteristic Curves

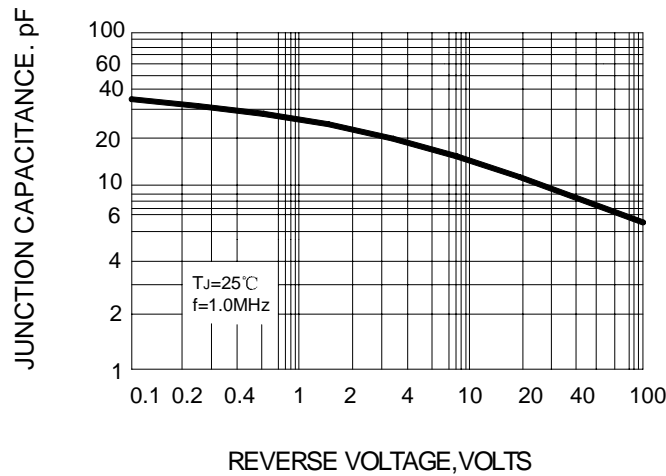
**FIG.1 – TYPICAL FORWARD CHARACTERISTICS**



**FIG.2 – FORWARD DRATING CURVE**

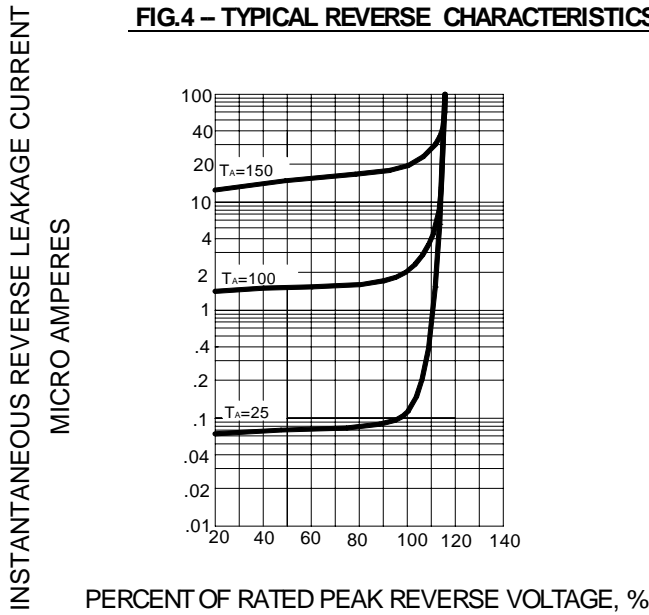


**FIG.3 – TYPICAL JUNCTION CAPACITANCE**

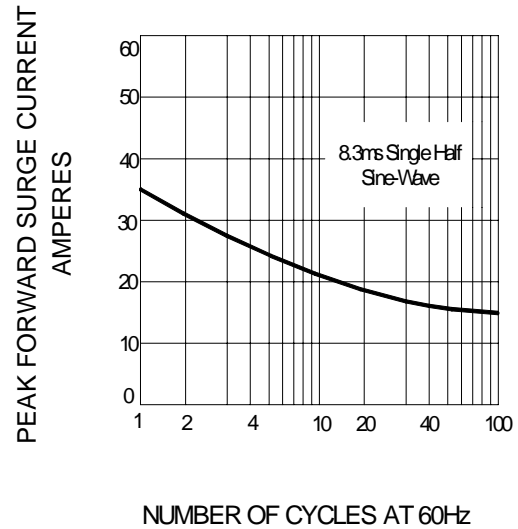


## Ratings AND Characteristic Curves

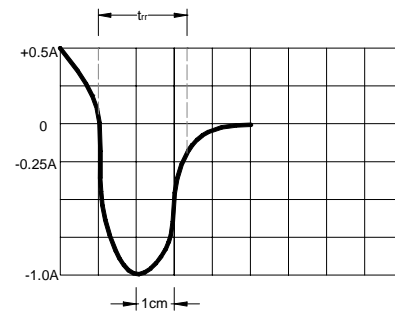
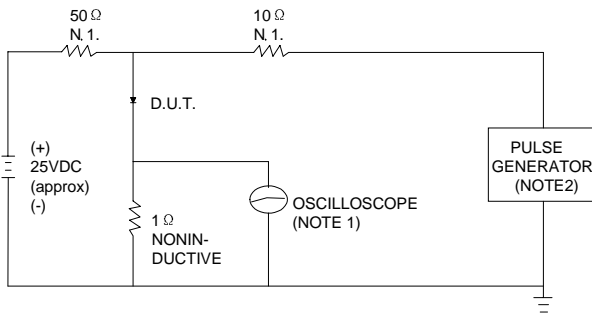
**FIG.4 – TYPICAL REVERSE CHARACTERISTICS**



**FIG.5 – PEAK FORWARD SURGE CURRENT**



**FIG.6 – TEST CIRCUIT DIAGRAM AND REVERSE RECOVERY TIME CHARACTERISTIC**



NOTES: 1. RISE TIME = 7ns MAX. INPUT IMPEDANCE = 1M $\Omega$ . 22pF.  
 2. RISE TIME = 10ns MAX. SOURCE IMPEDANCE = 50  $\Omega$ .

SET TIME BASE FOR 10/20 ns/cm

PACKAGE	SPQ/PCS	CARTON SPQ/PCS	CARTON SIZE/CM	CARTON GW/KG	CARTON NW/KG
DO-41	5000/AMMO	50000	42X28X31	14.00	12.00

## X-ON Electronics

Largest Supplier of Electrical and Electronic Components

*Click to view similar products for [Rectifiers](#) category:*

*Click to view products by [LGE](#) manufacturer:*

Other Similar products are found below :

[70HFR40](#) [FR105 R0](#) [RL252-TP](#) [150KR30A](#) [1N5397](#) [1N4002G](#) [1N4005-TR](#) [UFS120Je3/TR13](#) [JANS1N6640US](#) [481235F](#)  
[RRE02VS6SGTR](#) [067907F](#) [MS306](#) [70HF40](#) [T110HF60](#) [T85HFL60S02](#) [US2JFL-TP](#) [A1N5404G-G](#) [CRS12\(T5L,TEMQ\)](#) [ACGRB207-HF](#)  
[CLH07\(TE16L,Q\)](#) [CLH03\(TE16L,Q\)](#) [ACGRC307-HF](#) [ACEFC304-HF](#) [NTE6356](#) [NTE6359](#) [85HFR60](#) [40HFR60](#) [70HF120](#) [85HFR80](#)  
[D126A45C](#) [SCF7500](#) [D251N08B](#) [SCHJ22.5K](#) [SM100](#) [SCPA2](#) [SDHD5K](#) [ACGRA4001-HF](#) [ACURA107-HF](#) [D1821SH45T PR](#) [D1251S45T](#)  
[NTE6358](#) [NTE5850](#) [NTE5819](#) [NTE5837](#) [NTE5892](#) [NTE5900](#) [NTE5911](#) [NTE5915](#) [NTE5921](#)