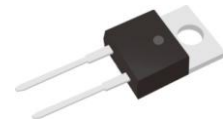


Features

- ◇ Superfast recovery times-epitaxial construction
- ◇ Low forward voltage,High current capability
- ◇ Fast switching for high efficiency
- ◇ Excellent low reverse leakages
- ◇ Excellent high temperature stability
- ◇ Low stored charge majority carrier conduction
- ◇ High forward surge capability
- ◇ Lead free finish ,Rohs and WEEE compliant.



VU $\overline{\text{E}}$ GGEO $\overline{\text{D}}$



QU $\overline{\text{U}}$ GGEO $\overline{\text{D}}$



VU $\overline{\text{E}}$ GH

Applications

- ◇ DC to DC converter
- ◇ Switching mode converters and inverters
- ◇ Lighting application
- ◇ Freewheeling application

Mechanical Data

- ◇ Moisture Sensitivity: MSL Level 1,per J-STD-020
- ◇ Terminals:Matte Tin Finish.
Solderable per MIL-STD-202 Method 208
- ◇ Case Material: Molded Plastic;
Molding compound meet UL Flammability Classification Rating 94V-0
- ◇ Case:JEDEC TO-220AC,ITO-AC,TO-263

MAXIMUM RATING

Ratings at 25°C ambient temperature unless otherwise specified.

PARAMETER	SYMBOL	VALUE	UNITS	
Maximum repetitive peak reverse voltage	V_{RRM}	600	V	
Maximum RMS voltage	V_{RWS}	420	V	
Maximum DC blocking voltage	V_{DC}	600	V	
Maximum average forward rectified current	$I_{F(AV)}$	15	A	
Peak forward surge current 8.3ms half-sine-wave	I_{FSM}	225	A	
I^2t Rating for Fusing($t < 8.3ms$)	I^2t	210	A ² s	
Typical Thermal Resistance	TO-220AC	$R_{\theta JA}$	30	°C/W
		$R_{\theta JC}$	2.5	°C/W
	ITO-220AC	$R_{\theta JC}$	6.5	°C/W
	TO-263	$R_{\theta JC}$	5.0	°C/W
Typical junction capacitance: VR=4.0v,f=1MHz	C_J	100	pF	
Junction temperature	T_J	150	°C	
Storage temperature range	T_{STG}	-55~150	°C	

ELECTRICAL CHARACTERISTICS

PARAMETER	TEST CONDITIONS	SYMBOL	VALUE			UNITS	
			Min	Typ	Max		
Breakdown voltage per diode(min)	IR=0.01mA	VB _R	600	-	-	V	
Instantaneous forward voltage	IF=15A per Ige	TA= 25°C	VF	-	1.20	1.50	V
		TA= 125°C	VF	-	1.0	-	V
Maximum DC reverse current @Rated DC Blocking Voltage	TA= 25°C	IR	-	0.02	10	μ A	
	TA=125°C	IR	-	8.0	500	μ A	
Reverse Recovery Time (IF=0.5A, IR=1.0A, IRR=0.25A)	MUR1560	trr	-	45	50	ns	
	MUR1560B	trr	-	33	50	ns	
	MUR1560E	trr	-	33	50	ns	
	MUR1560F	trr	-	33	50	ns	

ORDERING PACK INFORMATION

Part No.	Package	Packing	Box Size L×W×H(mm)	Quantity(pcs/box)	Carton Size L×W×H(mm)	Quantity(pcs/carton)
MUR1560	TO-220AC	50pcs/Tube	558×148×38	1000	565×225×170	5000
MUR1560B	TO-263	50pcs/Tube	558×148×38	1000	565×225×170	5000
MUR1560E	ITO-220AC	50pcs/Tube	558×148×38	1000	565×225×170	5000
MUR1560F	ITO-220AB	50pcs/Tube	558×148×38	1000	565×225×170	5000

RATING AND CHARACTERISTICS CURVES

FIG-1 TYPICAL FORWARD CHARACTERISTICS

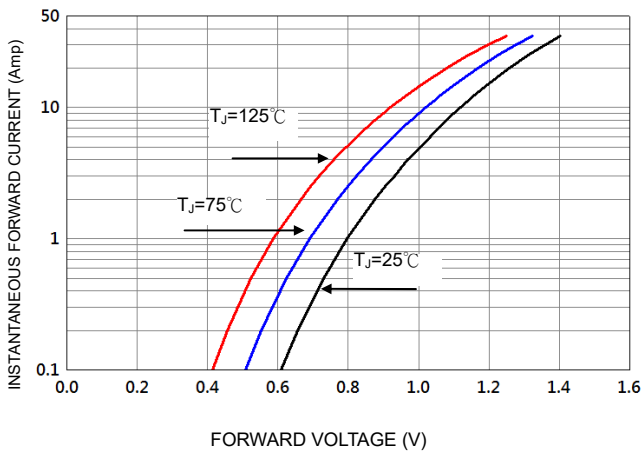


FIG-3 FORWARD CURRENT DERATING CURVE

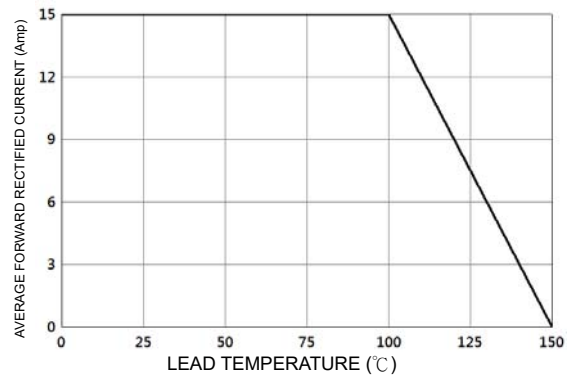


FIG-2 TYPICAL REVERSE CHARACTERISTICS

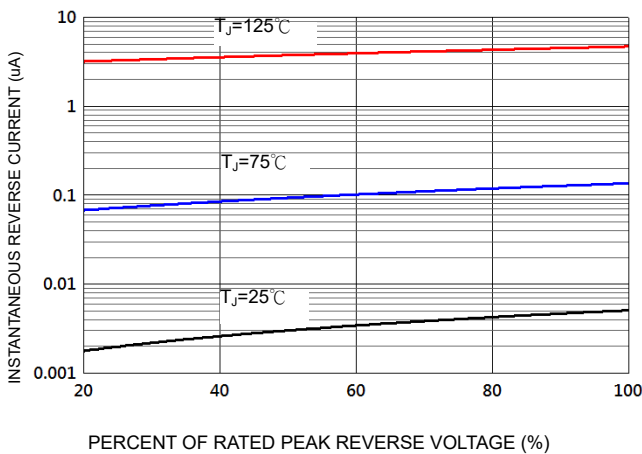


FIG-4 TYPICAL JUNCTION CAPACITANCE

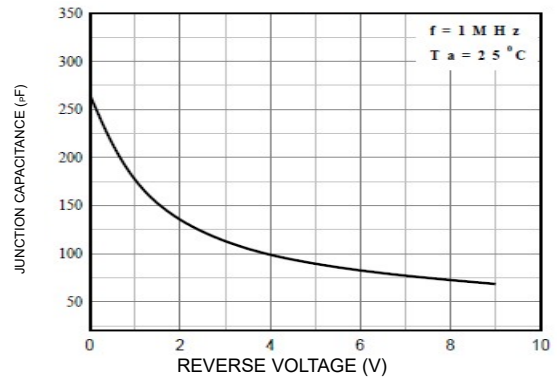
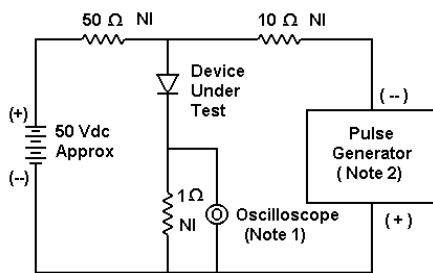
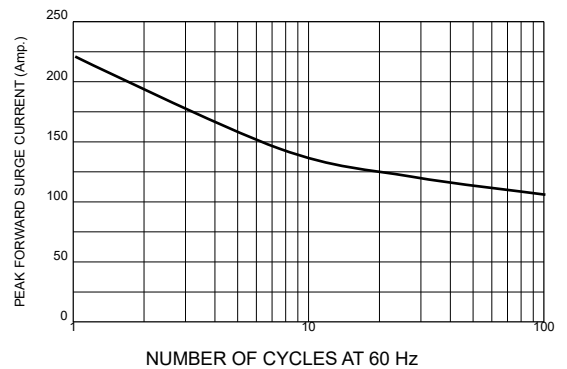
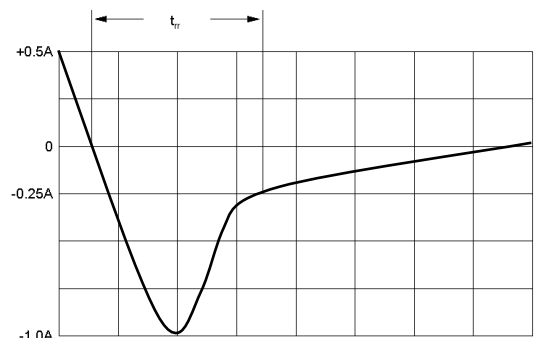


FIG-5 PEAK FORWARD SURGE CURRENT



Notes:
 1. Rise Time = 7 ns max. Input Impedance = 1 M.Ω, 22 pF
 2. Rise Time = 10 ns max. Input Impedance = 50 Ω

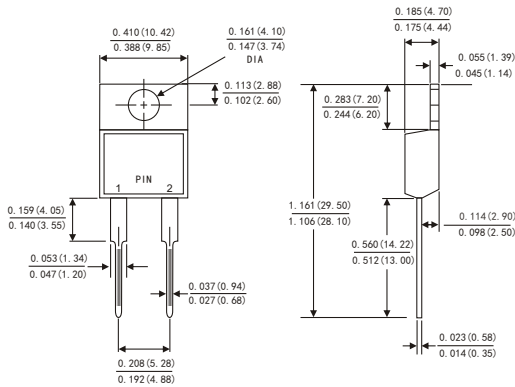


Set time base for 10/20 ns/cm

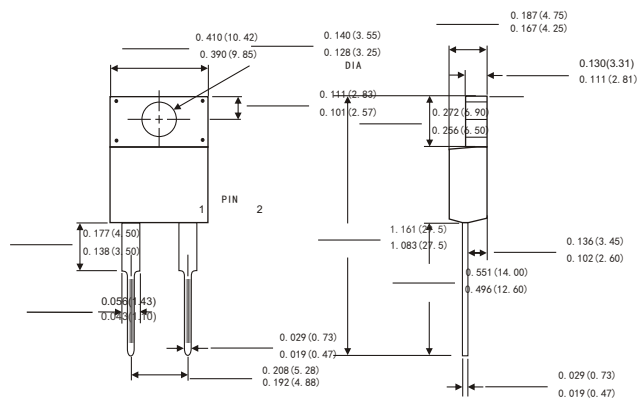
FIG-6 Reverse Recovery Time Characteristic and Test Circuit Diagram

PACKAGE OUTLINE DIMENSIONS

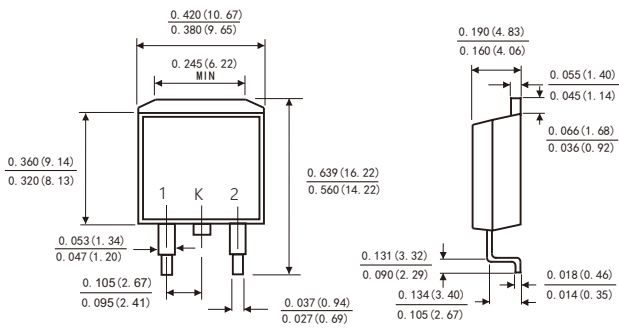
TO-220AC



ITO-220AC



TO-263



X-ON Electronics

Largest Supplier of Electrical and Electronic Components

Click to view similar products for [Rectifiers](#) category:

Click to view products by [LGE](#) manufacturer:

Other Similar products are found below :

[70HFR40](#) [FR105 R0](#) [RL252-TP](#) [1N5397](#) [1N4005-TR](#) [1N4007-BP](#) [UFS120Je3/TR13](#) [20ETS12S](#) [RRE02VS6SGTR](#) [MS306](#) [A1N5404G-G](#)
[CRF02\(T5L,TEMQ\)](#) [ACGRB207-HF](#) [CLH07\(TE16L,Q\)](#) [CLH03\(TE16L,Q\)](#) [1N5395-TP](#) [UES1302](#) [ACGRC307-HF](#) [ACEFC304-HF](#) [DZ-](#)
[1380](#) [85HFR60](#) [40HFR60](#) [70HF120](#) [85HFR80](#) [SCF7500](#) [SM100](#) [ACGRA4001-HF](#) [SKN70/08](#) [NTE5819](#) [NTE5827](#) [NTE5828](#) [NTE5911](#)
[NTE5915](#) [NTE6104](#) [NTE6163](#) [NTE6164](#) [NTE6165](#) [NTE6364](#) [TSD3G](#) [SET130312](#) [NRVUS110VT3G](#) [UES1106](#) [UES1306](#)
[NRVUS240VT3G](#) [D5FE60-5063](#) [R4000GPS-TP](#) [D4015L56TP](#) [UES1306HR2](#) [FX20K120](#) [D20XB60-7101](#)