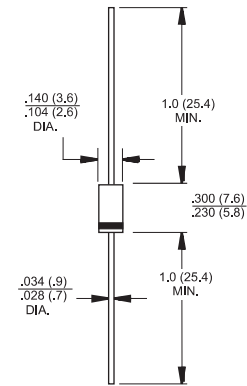




### DO-15

## Features

- ✧ Plastic package has Underwriters Laboratory Flammability Classification 94V-0
- ✧ 600W surge capability at 10 x 1000 us waveform
- ✧ Excellent clamping capability
- ✧ Low Dynamic impedance
- ✧ Fast response time: Typically less than 1.0ps from 0 volts to VBR for unidirectional and 5.0 ns for bidirectional
- ✧ Typical  $I_R$  less than 1uA above 10V
- ✧ High temperature soldering guaranteed: 260°C / 10 seconds / .375", (9.5mm) lead length / 5lbs., (2.3kg) tension



## Mechanical Data

Dimensions in inches and (millimeters)

- ✧ Case: Molded plastic
- ✧ Polarity: Color band denotes cathode except bipolar
- ✧ Weight: 0.42gram

## Maximum Ratings and Electrical Characteristics

Rating at 25 °C ambient temperature unless otherwise specified.

Single phase, half wave, 60 Hz, resistive or inductive load.

For capacitive load, derate current by 20%

| Type Number   | Symbol                             | Value        | Units                |
|---|------------------------------------|--------------|----------------------|
| Peak Power Dissipation at $T_A=25^{\circ}\text{C}$ , $T_p=1\text{ms}$ (Note 1)                              | $P_{PK}$                           | Minimum 600  | Watts                |
| Steady State Power Dissipation at $T_L=75^{\circ}\text{C}$<br>Lead Lengths .375", 9.5mm (Note 2)            | $P_D$                              | 5.0          | Watts                |
| Peak Forward Surge Current, 8.3 ms Single Half Sine-wave Superimposed on Rated Load (JEDEC method) (Note 3) | $I_{FSM}$                          | 100          | Amps                 |
| Maximum Instantaneous Forward Voltage at 50.0A for Unidirectional Only (Note 4)                             | $V_F$                              | 3.5 / 5.0    | Volts                |
| Typical Thermal Resistance (Note 5)   | $R_{\theta JL}$<br>$R_{\theta JA}$ | 10<br>62     | $^{\circ}\text{C/W}$ |
| Operating and Storage Temperature Range   | $T_J, T_{STG}$                     | -55 to + 175 | $^{\circ}\text{C}$   |

- Notes:
1. Non-repetitive Current Pulse Per Fig. 3 and Derated above  $T_A=25^{\circ}\text{C}$  Per Fig. 2.
  2. Mounted on Copper Pad Area of 0.4 x 0.4" (10 x 10 mm) Per Fig. 4.
  3. 8.3ms Single Half Sine-wave or Equivalent Square Wave, Duty Cycle=4 Pulses Per Minutes Maximum.
  4.  $V_F=3.5\text{V}$  for Devices of  $V_{BR} \leq 200\text{V}$  and  $V_F=5.0\text{V}$  Max. for Devices of  $V_{BR}>200\text{V}$ .
  5. Measured on P.C.B. with 10mm x 10mm.

Devices for Bipolar Applications

1. For Bidirectional Use C or CA Suffix for Types P6KE6.8 through Types P6KE440.
2. Electrical Characteristics Apply in Both Directions.

### RATINGS AND CHARACTERISTIC CURVES (P6KE SERIES)

FIG.1- PEAK PULSE POWER RATING CURVE

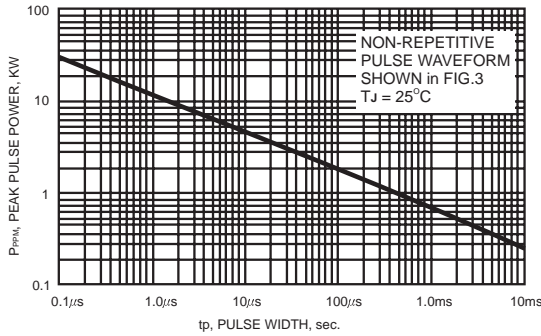


FIG.2- PULSE DERATING CURVE

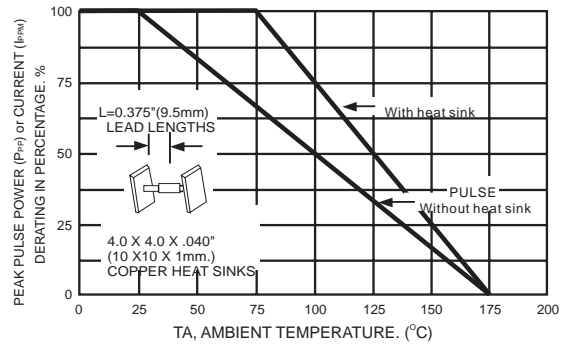


FIG.3- CLAMPING POWER PULSE WAVEFORM

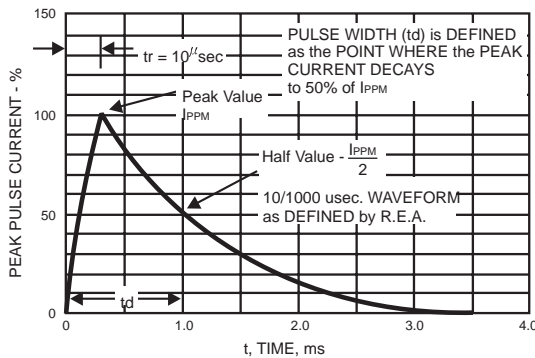


FIG.4- MAXIMUM NON-REPETITIVE FORWARD SURGE CURRENT UNIDIRECTIONAL ONLY

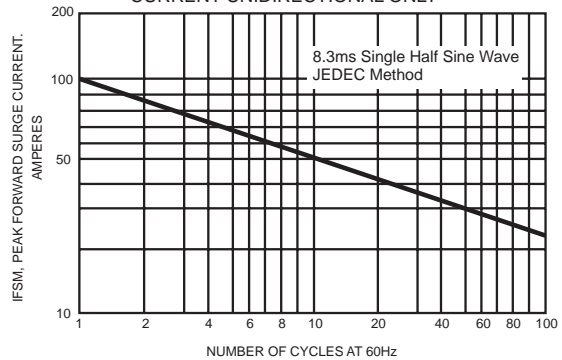
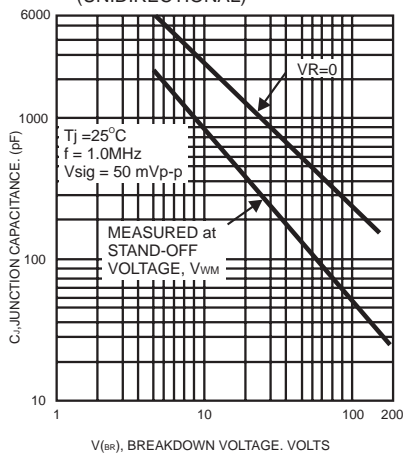


FIG.5- TYPICAL JUNCTION CAPACITANCE (UNIDIRECTIONAL)





# P6KE SERIES

## 600 Watts Transient Voltage Suppressor Diodes



ELECTRICAL CHARACTERISTICS (at TA=25 °C unless otherwise noted)

| TYPE     | BREAKDOWN VOLTAGE            |           | TEST CURRENT         | REVERSE STAND-OFF VOLTAGE | REVERSE LEAKAGE                                   | PULSE CURRENT         | MAXIMUM CLAMPING VOLTAGE               | MAXIMUM TEMPERATURE COEFFICIENT OF V <sub>(BR)</sub> |
|----------|------------------------------|-----------|----------------------|---------------------------|---|-----------------------|--|--|
|          | V <sub>(BR)</sub> ( Note 1 ) |           |                      |                           |   |                       |  |  |
|          | V ( MIN )                    | V ( MAX ) | I <sub>r</sub><br>mA | V <sub>WM</sub><br>V      | I <sub>0</sub> @V <sub>WM</sub> ( Note 2 )<br>µ A | I <sub>ppm</sub><br>A | V <sub>C</sub> @ I <sub>ppm</sub><br>V |  |
| P6KE6.8  | 6.12                         | 7.48      | 10.0                 | 5.50                      | 1000.0  | 58.0                  | 10.8                                   | 0.057  |
| P6KE6.8A | 6.45                         | 7.14      | 10.0                 | 5.80                      | 1000.0  | 60.0                  | 10.5                                   | 0.057  |
| P6KE7.5  | 6.75                         | 8.25      | 10.0                 | 6.05                      | 500.0   | 53.0                  | 11.7                                   | 0.061  |
| P6KE7.5A | 7.13                         | 7.88      | 10.0                 | 6.40                      | 500.0   | 55.0                  | 11.3                                   | 0.061  |
| P6KE8.2  | 7.38                         | 9.02      | 10.0                 | 6.63                      | 200.0   | 50.0                  | 12.5                                   | 0.065  |
| P6KE8.2A | 7.79                         | 8.61      | 10.0                 | 7.02                      | 200.0   | 52.0                  | 12.1                                   | 0.065  |
| P6KE9.1  | 8.19                         | 10.0      | 1.0                  | 7.37                      | 50.0  | 45.0                  | 13.8                                   | 0.068  |
| P6KE9.1A | 8.65                         | 9.55      | 1.0                  | 7.78                      | 50.0  | 47.0                  | 13.4                                   | 0.068  |
| P6KE10   | 9.00                         | 11.0      | 1.0                  | 8.10                      | 10.0  | 42.0                  | 15.0                                   | 0.073  |
| P6KE10A  | 9.50                         | 10.5      | 1.0                  | 8.55                      | 10.0  | 43.0                  | 14.5                                   | 0.073  |
| P6KE11   | 9.90                         | 12.1      | 1.0                  | 8.92                      | 5.0   | 38.0                  | 16.2                                   | 0.075  |
| P6KE11A  | 10.5                         | 11.6      | 1.0                  | 9.40                      | 5.0   | 40.0                  | 15.6                                   | 0.075  |
| P6KE12   | 10.8                         | 13.2      | 1.0                  | 9.72                      | 5.0   | 36.0                  | 17.3                                   | 0.078  |
| P6KE12A  | 11.4                         | 12.6      | 1.0                  | 10.2                      | 5.0   | 37.0                  | 16.7                                   | 0.078  |
| P6KE13   | 11.7                         | 14.3      | 1.0                  | 10.5                      | 5.0   | 33.0                  | 19.0                                   | 0.081  |
| P6KE13A  | 12.4                         | 13.7      | 1.0                  | 11.1                      | 5.0   | 34.0                  | 18.2                                   | 0.081  |
| P6KE15   | 13.5                         | 16.5      | 1.0                  | 12.1                      | 5.0   | 28.0                  | 22.0                                   | 0.084  |
| P6KE15A  | 14.3                         | 15.8      | 1.0                  | 12.8                      | 5.0   | 29.0                  | 21.2                                   | 0.084  |
| P6KE16   | 14.4                         | 17.6      | 1.0                  | 12.9                      | 5.0   | 26.0                  | 23.5                                   | 0.086  |
| P6KE16A  | 15.2                         | 16.8      | 1.0                  | 13.6                      | 5.0   | 28.0                  | 22.5                                   | 0.086  |
| P6KE18   | 16.2                         | 19.8      | 1.0                  | 14.5                      | 5.0   | 23.0                  | 26.5                                   | 0.088  |
| P6KE18A  | 17.1                         | 18.9      | 1.0                  | 15.3                      | 5.0   | 25.0                  | 25.2                                   | 0.088  |
| P6KE20   | 18.0                         | 22.0      | 1.0                  | 16.2                      | 5.0   | 21.0                  | 29.1                                   | 0.090  |
| P6KE20A  | 19.0                         | 21.0      | 1.0                  | 17.1                      | 5.0   | 22.0                  | 27.7                                   | 0.090  |
| P6KE22   | 19.8                         | 24.2      | 1.0                  | 17.8                      | 5.0   | 19.0                  | 31.9                                   | 0.092  |
| P6KE22A  | 20.9                         | 23.1      | 1.0                  | 18.8                      | 5.0   | 20.0                  | 30.6                                   | 0.092  |
| P6KE24   | 21.6                         | 26.4      | 1.0                  | 19.4                      | 5.0   | 18.0                  | 34.7                                   | 0.094  |
| P6KE24A  | 22.8                         | 25.2      | 1.0                  | 20.5                      | 5.0   | 19.0                  | 33.2                                   | 0.094  |
| P6KE27   | 24.3                         | 29.7      | 1.0                  | 21.8                      | 5.0   | 16.0                  | 39.1                                   | 0.096  |
| P6KE27A  | 25.7                         | 28.4      | 1.0                  | 23.1                      | 5.0   | 16.8                  | 37.5                                   | 0.096  |
| P6KE30   | 27.0                         | 33.0      | 1.0                  | 24.3                      | 5.0   | 14.0                  | 43.5                                   | 0.097  |
| P6KE30A  | 28.5                         | 31.5      | 1.0                  | 25.6                      | 5.0   | 15.0                  | 41.4                                   | 0.097  |
| P6KE33   | 29.7                         | 36.3      | 1.0                  | 26.8                      | 5.0   | 13.0                  | 47.7                                   | 0.098  |
| P6KE33A  | 31.4                         | 34.7      | 1.0                  | 28.2                      | 5.0   | 13.8                  | 45.7                                   | 0.098  |
| P6KE36   | 32.4                         | 39.6      | 1.0                  | 29.1                      | 5.0   | 12.0                  | 52.0                                   | 0.099  |
| P6KE36A  | 34.2                         | 37.8      | 1.0                  | 30.8                      | 5.0   | 12.6                  | 49.9                                   | 0.099  |
| P6KE39   | 35.1                         | 42.9      | 1.0                  | 31.6                      | 5.0   | 11.1                  | 56.4                                   | 0.100  |
| P6KE39A  | 37.1                         | 41.0      | 1.0                  | 33.3                      | 5.0   | 11.6                  | 53.9                                   | 0.100  |
| P6KE43   | 38.7                         | 47.3      | 1.0                  | 34.8                      | 5.0   | 10.0                  | 61.9                                   | 0.101  |
| P6KE43A  | 40.9                         | 45.2      | 1.0                  | 36.8                      | 5.0   | 10.6                  | 59.3                                   | 0.101  |
| P6KE47   | 42.3                         | 51.7      | 1.0                  | 38.1                      | 5.0   | 9.2                   | 67.8                                   | 0.101  |
| P6KE47A  | 44.7                         | 49.4      | 1.0                  | 40.2                      | 5.0   | 9.7                   | 64.8                                   | 0.101  |
| P6KE51   | 45.9                         | 56.1      | 1.0                  | 41.3                      | 5.0   | 8.5                   | 73.5                                   | 0.102  |
| P6KE51A  | 48.5                         | 53.6      | 1.0                  | 43.6                      | 5.0   | 8.9                   | 70.1                                   | 0.102  |
| P6KE56   | 50.4                         | 61.6      | 1.0                  | 45.4                      | 5.0   | 7.8                   | 80.5                                   | 0.103  |
| P6KE56A  | 53.2                         | 58.8      | 1.0                  | 47.8                      | 5.0   | 8.1                   | 77.0                                   | 0.103  |
| P6KE62   | 55.8                         | 68.2      | 1.0                  | 50.2                      | 5.0   | 7.0                   | 89.0                                   | 0.104  |
| P6KE62A  | 58.9                         | 65.1      | 1.0                  | 53.0                      | 5.0   | 7.4                   | 85.0                                   | 0.104  |
| P6KE68   | 61.2                         | 74.8      | 1.0                  | 55.1                      | 5.0   | 6.4                   | 98.0                                   | 0.104  |
| P6KE68A  | 64.6                         | 71.4      | 1.0                  | 58.1                      | 5.0   | 6.8                   | 92.0                                   | 0.104  |



# P6KE SERIES

## 600 Watts Transient Voltage Suppressor Diodes



### ELECTRICAL CHARACTERISTICS (at TA=25 °C unless otherwise noted)

| TYPE     | BREAKDOWN VOLTAGE          |        | TEST CURRENT   | REVERSE STAND-OFF VOLTAGE | REVERSE LEAKAGE                          | PULSE CURRENT    | MAXIMUM CLAMPING VOLTAGE          | MAXIMUM TEMPERATURE COEFFICIENT OF V <sub>(BR)</sub> |
|----------|----------------------------|--------|----------------|---------------------------|--|------------------|-----------------------------------|--|
|          | V <sub>(BR)</sub> (Note 1) |        | I <sub>T</sub> | V <sub>WM</sub>           | I <sub>0</sub> @V <sub>WM</sub> (Note 2) | I <sub>ppm</sub> | V <sub>C</sub> @ I <sub>ppm</sub> |  |
|          | V(MIN)                     | V(MAX) | mA             | V                         | μA                                       | A                | V                                 |  |
| P6KE75   | 67.5                       | 82.5   | 1.0            | 60.7                      | 5.0                                      | 5.8              | 108                               | 0.105  |
| P6KE75A  | 71.3                       | 78.8   | 1.0            | 64.1                      | 5.0                                      | 6.1              | 103                               | 0.105  |
| P6KE82   | 73.8                       | 90.2   | 1.0            | 66.4                      | 5.0                                      | 5.3              | 118                               | 0.105  |
| P6KE82A  | 77.9                       | 86.1   | 1.0            | 70.1                      | 5.0                                      | 5.5              | 113                               | 0.105  |
| P6KE91   | 81.9                       | 100    | 1.0            | 73.7                      | 5.0                                      | 4.8              | 131                               | 0.106  |
| P6KE91A  | 86.5                       | 95.5   | 1.0            | 77.8                      | 5.0                                      | 5.0              | 125                               | 0.106  |
| P6KE100  | 90.0                       | 110    | 1.0            | 81.0                      | 5.0                                      | 4.3              | 144                               | 0.106  |
| P6KE100A | 95.0                       | 105    | 1.0            | 85.5                      | 5.0                                      | 4.5              | 137                               | 0.106  |
| P6KE110  | 99.0                       | 121    | 1.0            | 89.2                      | 5.0                                      | 3.9              | 158                               | 0.107  |
| P6KE110A | 105                        | 116    | 1.0            | 94.0                      | 5.0                                      | 4.1              | 152                               | 0.107  |
| P6KE120  | 108                        | 132    | 1.0            | 97.2                      | 5.0                                      | 3.6              | 173                               | 0.107  |
| P6KE120A | 114                        | 126    | 1.0            | 102                       | 5.0                                      | 3.8              | 165                               | 0.107  |
| P6KE130  | 117                        | 143    | 1.0            | 105                       | 5.0                                      | 3.3              | 187                               | 0.107  |
| P6KE130A | 124                        | 137    | 1.0            | 111                       | 5.0                                      | 3.5              | 179                               | 0.107  |
| P6KE150  | 135                        | 165    | 1.0            | 121                       | 5.0                                      | 2.9              | 215                               | 0.108  |
| P6KE150A | 143                        | 158    | 1.0            | 128                       | 5.0                                      | 3.0              | 207                               | 0.108  |
| P6KE160  | 144                        | 176    | 1.0            | 130                       | 5.0                                      | 2.7              | 230                               | 0.108  |
| P6KE160A | 152                        | 168    | 1.0            | 136                       | 5.0                                      | 2.8              | 219                               | 0.108  |
| P6KE170  | 153                        | 187    | 1.0            | 138                       | 5.0                                      | 2.5              | 244                               | 0.108  |
| P6KE170A | 162                        | 179    | 1.0            | 145                       | 5.0                                      | 2.6              | 234                               | 0.108  |
| P6KE180  | 162                        | 198    | 1.0            | 146                       | 5.0                                      | 2.4              | 258                               | 0.108  |
| P6KE180A | 171                        | 189    | 1.0            | 154                       | 5.0                                      | 2.5              | 246                               | 0.108  |
| P6KE200  | 180                        | 220    | 1.0            | 162                       | 5.0                                      | 2.1              | 287                               | 0.108  |
| P6KE200A | 190                        | 210    | 1.0            | 171                       | 5.0                                      | 2.2              | 274                               | 0.108  |
| P6KE220  | 198                        | 242    | 1.0            | 175                       | 5.0                                      | 1.8              | 344                               | 0.108  |
| P6KE220A | 209                        | 231    | 1.0            | 185                       | 5.0                                      | 1.9              | 328                               | 0.108  |
| P6KE250  | 225                        | 275    | 1.0            | 202                       | 5.0                                      | 1.7              | 360                               | 0.110  |
| P6KE250A | 237                        | 263    | 1.0            | 214                       | 5.0                                      | 1.8              | 344                               | 0.110  |
| P6KE300  | 270                        | 330    | 1.0            | 243                       | 5.0                                      | 1.4              | 430                               | 0.110  |
| P6KE300A | 285                        | 315    | 1.0            | 256                       | 5.0                                      | 1.5              | 414                               | 0.110  |
| P6KE350  | 315                        | 385    | 1.0            | 284                       | 5.0                                      | 1.2              | 504                               | 0.110  |
| P6KE350A | 332                        | 368    | 1.0            | 300                       | 5.0                                      | 1.3              | 482                               | 0.110  |
| P6KE400  | 360                        | 440    | 1.0            | 324                       | 5.0                                      | 1.9              | 574                               | 0.110  |
| P6KE400A | 380                        | 420    | 1.0            | 342                       | 5.0                                      | 1.10             | 548                               | 0.110  |
| P6KE440  | 396                        | 484    | 1.0            | 356                       | 5.0                                      | 0.95             | 631                               | 0.110  |
| P6KE440A | 418                        | 462    | 1.0            | 376                       | 5.0                                      | 1.00             | 602                               | 0.110  |
| P4KE480  | 432                        | 528    | 1.0            | 389                       | 5.0                                      | 0.88             | 686                               | 0.110  |
| P4KE480A | 456                        | 504    | 1.0            | 408                       | 5.0                                      | 0.91             | 658                               | 0.110  |
| P6KE500  | 450                        | 550    | 1.0            | 400                       | 5.0                                      | 0.86             | 698                               | 0.110  |
| P6KE500A | 475                        | 525    | 1.0            | 428                       | 5.0                                      | 0.90             | 667                               | 0.110  |
| P6KE510  | 459                        | 561    | 1.0            | 413                       | 5.0                                      | 0.82             | 729                               | 0.110  |
| P6KE510A | 485                        | 535    | 1.0            | 434                       | 5.0                                      | 0.86             | 698                               | 0.110  |
| P6KE540  | 486                        | 594    | 1.0            | 437                       | 5.0                                      | 0.78             | 772                               | 0.110  |
| P6KE540A | 513                        | 567    | 1.0            | 459                       | 5.0                                      | 0.81             | 740                               | 0.110  |
| P6KE550  | 495                        | 605    | 1.0            | 440                       | 5.0                                      | 0.74             | 811                               | 0.110  |
| P6KE550A | 523                        | 578    | 1.0            | 470                       | 5.0                                      | 0.77             | 779                               | 0.110  |
| P6KE600  | 540                        | 660    | 1.0            | 480                       | 5.0                                      | 0.69             | 870                               | 0.120  |
| P6KE600A | 570                        | 630    | 1.0            | 513                       | 5.0                                      | 0.71             | 850                               | 0.120  |

- Notes): 1. V<sub>(BR)</sub> measured after IT applied for 300 μs, IT = square pulse or equivalent  
 2. For bidirectional types having VRWM of 10 volts and less, the ID limit is doubled.  
 3. For bidirectional use C or CA suffix for types P6KE6.8 thru type P6KE600, Electrical characteristics apply in both directions.

### TVS APPLICATION NOTES:

Transient Voltage Suppressors may be used at various points in a circuit to provide various degrees of protection. The following is a typical linear power supply with transient voltage suppressor units placed at different points. All provide protection of the load.

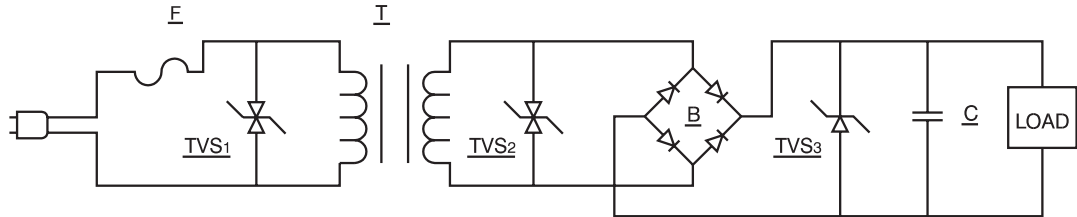


FIGURE 1

Transient Voltage Suppressors 1 provides maximum protection. However, the system will probably require replacement of the line fuse(F) since it provides a dominant portion of the series impedance when a surge is encountered.

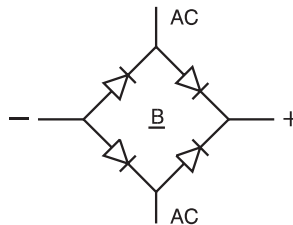
However, we do not recommend to use the TVS diode here, unless we can know the electric circuit impedance and the magnitude of surge rushed into the circuit. Otherwise the TVS diode is easy to be destroyed by voltage surge.

Transient Voltage Suppressor 2 provides excellent protection of circuitry excluding the transformer(T). However, since the transformer is a large part of the series impedance, the chance of the line fuse opening during the surge condition is reduced.

Transient Voltage Suppressor 3 provides the load with complete protection. It uses a unidirectional Transient Voltage Suppressor, which is a cost advantage. The series impedance now includes the line fuse, transformer, and bridge rectifier(B) so failure of the line fuse is further reduced. If only Transient Voltage Suppressor 3 is in use, then the bridge rectifier is unprotected and would require a higher voltage and current rating to prevent failure by transients.

Any combination of these three, or any one of these applications, will prevent damage to the load. This would require varying trade-offs in power supply protection versus maintenance(changing the time fuse).

An additional method is to utilize the Transient Voltage Suppressor units as a controlled avalanche bridge. This reduces the parts count and incorporates the protection within the bridge rectifier.



| PACKAGE | SPQ/PCS   | CARTON SPQ/PCS | CARTON SIZE/CM | CARTON GW/KG | CARTON NW/KG |
|---------|-----------|----------------|----------------|--------------|--------------|
| DO-15   | 3000/AMMO | 30000          | 42X28X31       | 12.00        | 10.00        |

## X-ON Electronics

Largest Supplier of Electrical and Electronic Components

*Click to view similar products for [ESD Suppressors / TVS Diodes](#) category:*

*Click to view products by [LGE](#) manufacturer:*

Other Similar products are found below :

[60KS200C](#) [D18V0L1B2LP-7B](#) [D5V0F4U5P5-7](#) [DESD5V0U1BB-7](#) [NTE4902](#) [P4KE27CA](#) [P6KE11CA](#) [P6KE39CA-TP](#) [P6KE8.2A](#)  
[SA110CA](#) [SA60CA](#) [SA64CA](#) [SMBJ12CATR](#) [SMBJ33CATR](#) [SMBJ8.0A](#) [ESD101-B1-02ELS E6327](#) [ESD105-B1-02EL E6327](#) [ESD112-B1-02EL E6327](#) [ESD119B1W01005E6327XTSA1](#) [ESD5V0L1B02VH6327XTSA1](#) [ESD7451N2T5G](#) [19180-510](#) [CPDT-5V0USP-HF](#)  
[3.0SMCJ33CA-F](#) [3.0SMCJ36A-F](#) [HSPC16701B02TP](#) [D3V3Q1B2DLP3-7](#) [D55V0M1B2WS-7](#) [DESD5V0U1BL-7B](#) [DRTR5V0U4SL-7](#)  
[SCM1293A-04SO](#) [ESD200-B1-CSP0201 E6327](#) [SM12-7](#) [SMF8.0A-TP](#) [SMLJ45CA-TP](#) [CEN955 W/DATA](#) [82350120560](#) [VESD12A1A-](#)  
[HD1-GS08](#) [CPDUR5V0R-HF](#) [CPDQC5V0U-HF](#) [CPDQC5V0USP-HF](#) [CPDQC5V0-HF](#) [D1213A-01LP4-7B](#) [D1213A-02WL-7](#)  
[1SMB33CAT3G-XYZ](#) [MMAD1108/TR13](#) [5KP100A](#) [5KP15A](#) [5KP18A](#) [5KP48A](#)