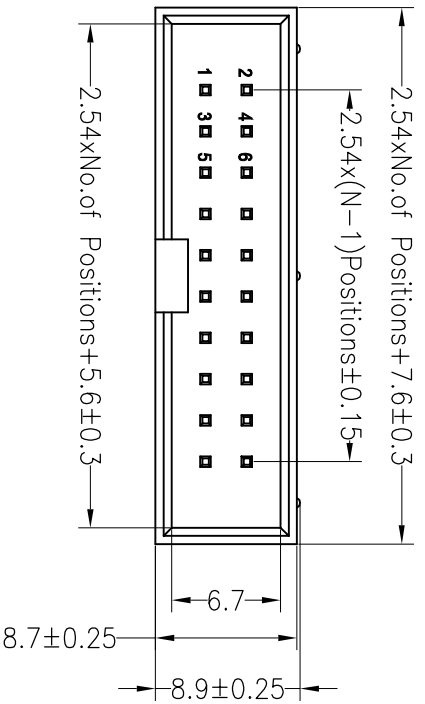


# RoHS

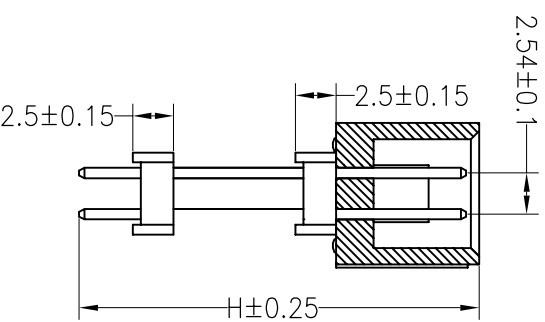
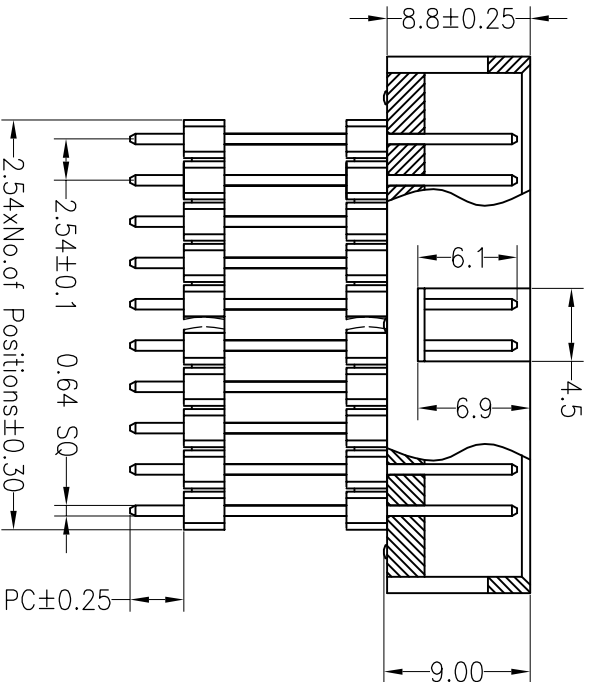
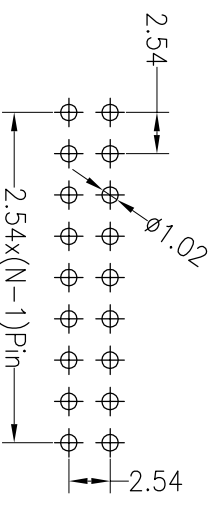
## SPECIFICATIONS

Rated Current: 3.0AMP  
 Contact Resistance: 20mΩ Max  
 Withstand Voltage: 1000V AC/DC  
 Insulation Resistance: 1000MΩ Min  
 Operation Temperature: -40°C to +105°C

Contact Material: Brass  
 Contact Plating: Au Over Ni  
 Insulator Material: Polyester (UL94V-0)  
 Standard: PBT  
 Max. Processing Temp: 180°C for 30-60 seconds  
 (200°C for 10 seconds)



Recommended P.C.B Layout (Top Side)  
 (PCB BOARD TOLERANCE ± 0.05)



Dimension antitheses list			
ITEM	PC	H	
Alternate	3.00	22.10	

深圳市连盛精密连接器有限公司

OPERATION		DRAW		SCALE		FIT		PART NO.									
X.X	±0.30			UNIT	mm			SIZE	A4								
X.XX	±0.20	CHECK						SHEET	1/1								
X.XXX	±0.10	APPROVE		PROJ.				TITLE:	2.54Box 3H=8.8+2X2.5 12P DIP								
Angle	±3°																
DIM	TOL																
<table border="1"> <thead> <tr> <th>REV</th> <th>DATE</th> <th>MODIFICATION DESCRIPTION</th> <th>CHANGE</th> </tr> </thead> <tbody> <tr> <td>1</td> <td>2012.10.05</td> <td>NEW DRAWING</td> <td></td> </tr> </tbody> </table>										REV	DATE	MODIFICATION DESCRIPTION	CHANGE	1	2012.10.05	NEW DRAWING	
REV	DATE	MODIFICATION DESCRIPTION	CHANGE														
1	2012.10.05	NEW DRAWING															

## X-ON Electronics

Largest Supplier of Electrical and Electronic Components

*Click to view similar products for [I/O Connectors](#) category:*

*Click to view products by [Liansheng](#) manufacturer:*

Other Similar products are found below :

[571763P](#) [61-168618-12P](#) [D20419-211](#) [72.250.1628.2](#) [72.250.2428.2](#) [76.350.0729.0](#) [76871-1403](#) [PCR-E36PM](#) [PCS-XE26LKA](#) [PCS-XES68MS+](#) [G38A71314B](#) [9776-18-6](#) [1571250010](#) [157-22500-3](#) [MS3471L14-19P L/C](#) [192991-0703](#) [172501-6002](#) [FCN-260C008-A/L0](#) [FCN-260C024-AL0](#) [FCN-261Z008](#) [2000314-1](#) [200331-1](#) [PCS-E28FS+](#) [PCS-XE26SLFD+](#) [PCS-XE26SLFDT+](#) [G730VID08BDC24](#) [HDMR-29-01-S-SM-TR](#) [HDRA-E68W1LFDTC-SL+](#) [54182-0605](#) [UE86K842720321](#) [38113800006](#) [DP3AR020WQ1R200](#) [Z4.102.0680.0](#) [500-1040](#) [500-1052](#) [500-1054](#) [ZP-4008-66L](#) [10-565995-597N](#) [10-584459-12P](#) [5554841-1](#) [SM3106F14S-7S-LC](#) [U90B3054061110](#) [U65-E04-4020](#) [ZPF00000000097891](#) [557-262M2-06C](#) [PCS-96LFD+](#) [60-042222-02S](#) [10099439-003C-TRLF](#) [226-0348-000](#) [10137239-0021LF](#)