
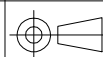


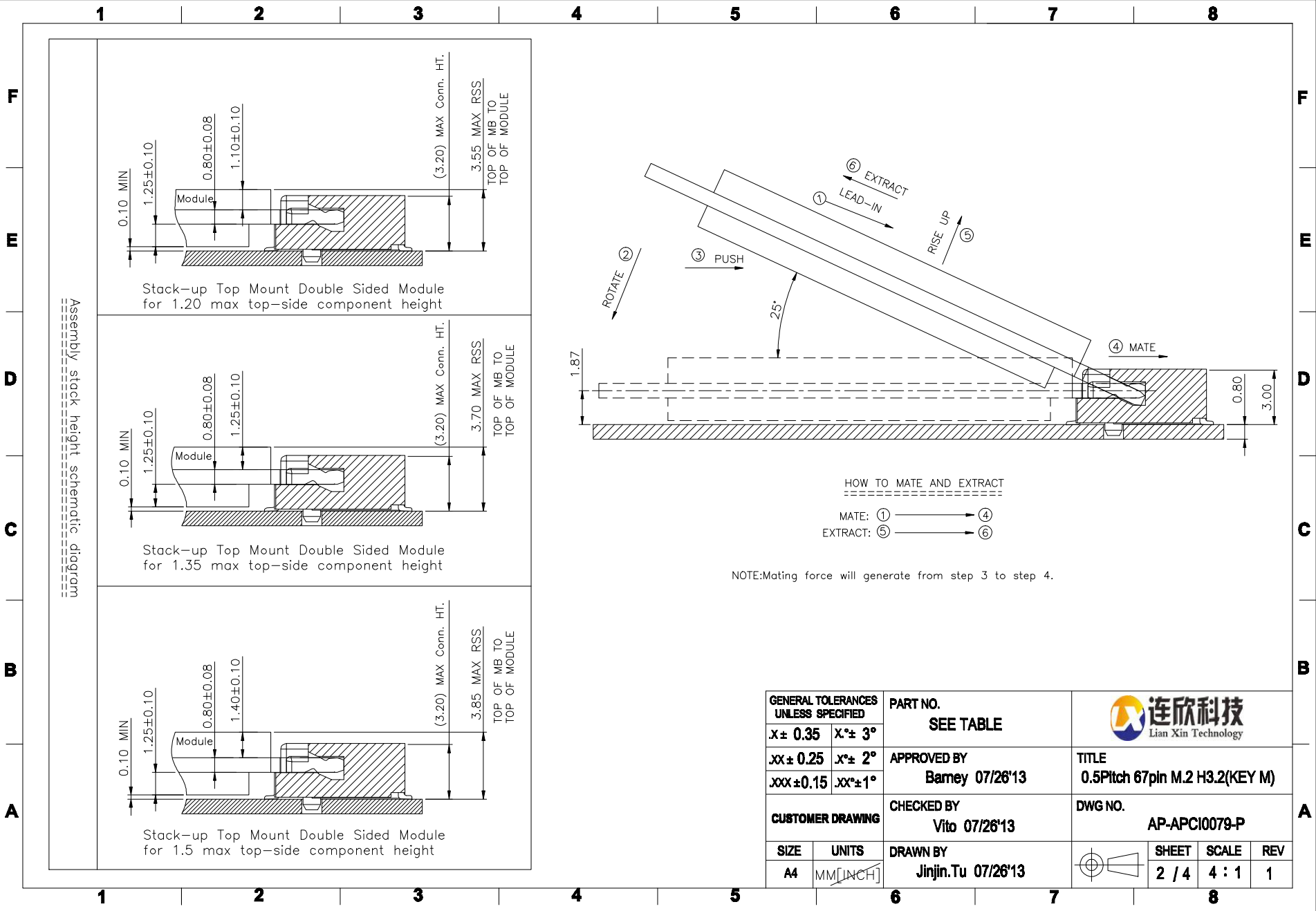
REV.	ECR/N NO./DESCRIPTION	DATE	DRAWN	CHECKED	APPROVE
1	SN14040	05/06'14	Jinjin.Tu	Vito	Barney

- NOTES:
- MATERIAL SPECIFICATION:
 - HOUSING: LCP+40%GF, UL94V-0, COLOR: BLACK.
 - CONTACT: COPPER ALLOY.
 - SMT TAB: S50C.
 - PLATING SPECIFICATION:
 - CONTACT:
 - 50u" MIN. NICKEL UNDER PLATING OVER ALL. G/F PLATING ON SOLDER AREA. GOLD PLATING ON CONTACT AREA: SEE TABLE
 - SMT TAB:
 - 50u" MIN. NICKEL UNDER PLATING OVER ALL. 80u" MIN. MATTE TIN PLATING ON SOLDER AREA.
 - HF COMPLIANT, ROHS COMPLIANT.
 - DATE CODE: XXXXXX
 - DAY
 - WEEK
 - YEAR
 - MECHANICAL PERFORMANCE:
 - DURABILITY: SEE TABLE
 - ELECTRICAL PERFORMANCE:
 - CURRENT: 0.5A PER PIN.
 - LLCR: INITIAL 55mΩ MAX.; FINAL ΔLLCR=20mΩ MAX..
 - IR REFLOW:
 - THE TEMPERATURE SHALL BE 260±5°C MAINTAINING 10±1 SECONDS.
 - PRODUCT NUMBER NOTE

A	P	C	T	X	X	X	X	X	X	X	X	X		
PACKING TYPE			PRODUCT SERIAL NUMBER			K:ROHS COMPLIANT/P:HF COMPLIANT			TYPE SERIAL NUMBER			PRODUCT TYPE		
FINISHED PRODUCT														

PART NO.	CONTACT PLATING	DURABILITY
APCI0079-P001A	30u" MIN. GOLD	60 CYCLES.
APCI0079-P002A	1~3u" MIN. GOLD	25 CYCLES.
APCI0079-P003A	10u" MIN. GOLD	25 CYCLES.

GENERAL TOLERANCES UNLESS SPECIFIED		PART NO.	 Lian Xin Technology
X ± 0.35	X ± 3°	SEE TABLE	
.XX ± 0.25	.X ± 2°	APPROVED BY	TITLE
.XXX ± 0.15	.XX ± 1°	Barney 07/26'13	0.5Pitch 67pin M.2 H3.2(KEY M)
CUSTOMER DRAWING		CHECKED BY	DWG NO.
		Vito 07/26'13	AP-APCI0079-P
SIZE	UNITS	DRAWN BY	
A4	MM [INCH]	Jinjin.Tu 07/26'13	
			SHEET
			1 / 4
			SCALE
			4 : 1
			REV
			1



Assembly stack height schematic diagram

Stack-up Top Mount Double Sided Module for 1.20 max top-side component height


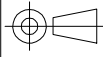
Stack-up Top Mount Double Sided Module for 1.35 max top-side component height

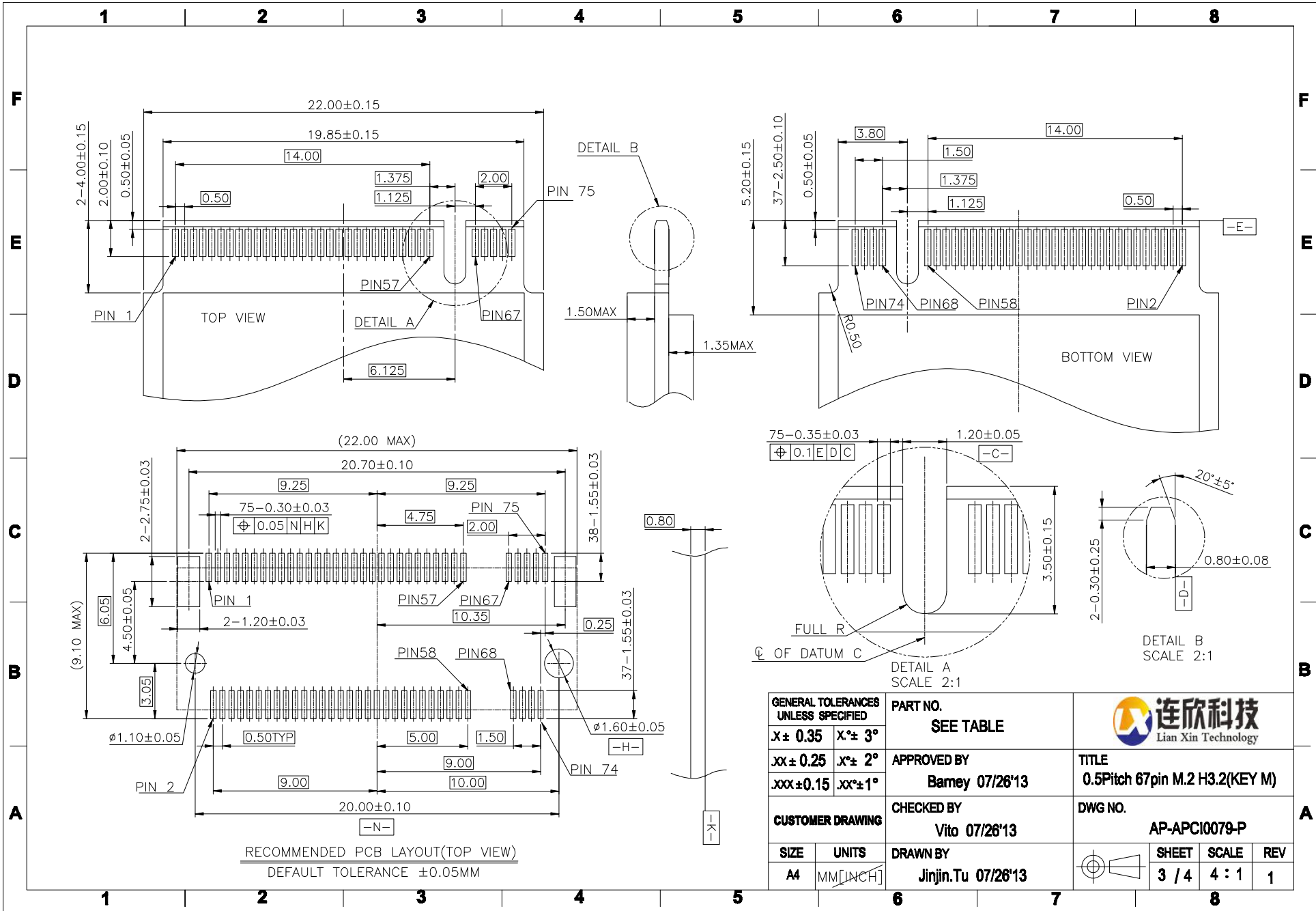
Stack-up Top Mount Double Sided Module for 1.5 max top-side component height

HOW TO MATE AND EXTRACT

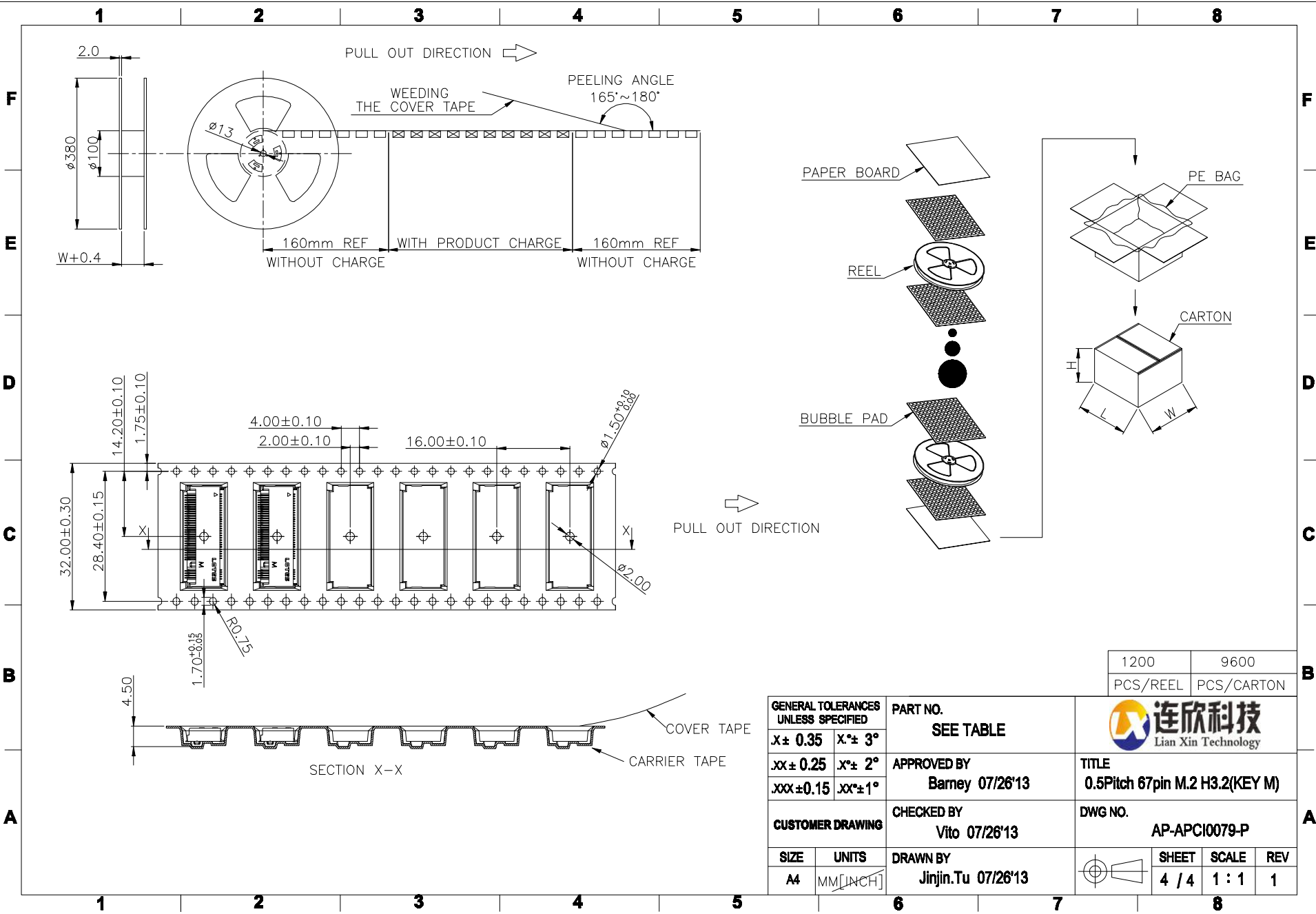
 MATE: ① → ④
 EXTRACT: ⑤ → ⑥

NOTE: Mating force will generate from step 3 to step 4.

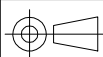
GENERAL TOLERANCES UNLESS SPECIFIED		PART NO.	 连欣科技 Lian Xin Technology		
$X \pm 0.35$	$X^\circ \pm 3^\circ$	SEE TABLE			
$JX \pm 0.25$	$JX^\circ \pm 2^\circ$	APPROVED BY	TITLE		
$JXX \pm 0.15$	$JXX^\circ \pm 1^\circ$	Barney 07/26'13			
CUSTOMER DRAWING		CHECKED BY	DWG NO.		
		Vito 07/26'13			
SIZE	UNITS	DRAWN BY	 SHEET SCALE REV		
A4	MM [INCH]	Jinjin.Tu 07/26'13			
			2 / 4	4 : 1	1



GENERAL TOLERANCES UNLESS SPECIFIED		PART NO. SEE TABLE	 Lian Xin Technology								
X±0.35	X°±3°										
XX±0.25	X°±2°	APPROVED BY Barney 07/26'13	TITLE 0.5Pitch 67pin M.2 H3.2(KEY M)								
XXX±0.15	.XX°±1°	CHECKED BY Vito 07/26'13	DWG NO. AP-APCI0079-P								
CUSTOMER DRAWING		DRAWN BY Jinjin.Tu 07/26'13	<table border="1"> <tr> <td>SHEET</td> <td>SCALE</td> <td>REV</td> </tr> <tr> <td>3 / 4</td> <td>4 : 1</td> <td>1</td> </tr> </table>			SHEET	SCALE	REV	3 / 4	4 : 1	1
SHEET	SCALE	REV									
3 / 4	4 : 1	1									



1200	9600
PCS/REEL	PCS/CARTON

GENERAL TOLERANCES UNLESS SPECIFIED		PART NO. SEE TABLE		 连欣科技 Lian Xin Technology								
$X \pm 0.35$	$X^\circ \pm 3^\circ$	APPROVED BY Barney 07/26'13					TITLE 0.5Pitch 67pin M.2 H3.2(KEY M)					
$.XX \pm 0.25$	$.X^\circ \pm 2^\circ$	CHECKED BY Vito 07/26'13		DWG NO. AP-APCI0079-P								
$.XXX \pm 0.15$	$.XX^\circ \pm 1^\circ$	CUSTOMER DRAWING		DRAWN BY Jinjin.Tu 07/26'13								
SIZE A4	UNITS MM [INCH]			 <table border="1"> <tr> <td>SHEET</td> <td>SCALE</td> <td>REV</td> </tr> <tr> <td>4 / 4</td> <td>1 : 1</td> <td>1</td> </tr> </table>			SHEET	SCALE	REV	4 / 4	1 : 1	1
SHEET	SCALE	REV										
4 / 4	1 : 1	1										

X-ON Electronics

Largest Supplier of Electrical and Electronic Components

Click to view similar products for [Standard Card Edge Connectors](#) category:

Click to view products by [Lian Xin](#) manufacturer:

Other Similar products are found below :

[CR7E-30DB-3.96E\(72\)](#) [6565204-6](#) [1437274-4](#) [1-582587-1](#) [284-0102-12100](#) [286-0052-12101A](#) [306022901000000](#) [A6D22DS29C2](#) [1926088-2](#) [245-062-520-350](#) [287-0032-12101](#) [306-028-525-102](#) [307-072-526-202](#) [330-030-500-278](#) [345-060-559-303](#) [534671-1](#) [341-240-317](#) [345-044-500-300](#) [346-240-318](#) [C7D10DS29C1M133](#) [395-100-524-300](#) [09-07-2032](#) [10035388-802LF](#) [10115859-011LF](#) [10122859-009LF](#) [101269333204245CLF](#) [530555-1](#) [66925-516LF](#) [5145409-2](#) [73726-0005](#) [66308-1](#) [EBC05DRXN](#) [KSLX-62-BR](#) [CE100F26-7-C](#) [CE100F28-3-D](#) [CE100F28-4-D](#) [CE156F22-9-C](#) [CT100F24-3-D](#) [CT100F24-6-C](#) [MLSS100-12-C](#) [SCC100F-11-C](#) [SCC100F-20-C](#) [SCC100F-24-C](#) [SCC100F-25-C](#) [3-530656](#) [2512250177](#) [285-0112-12300](#) [346-068-556-300](#) [284-0492-11000](#) [287-0032-12301](#)