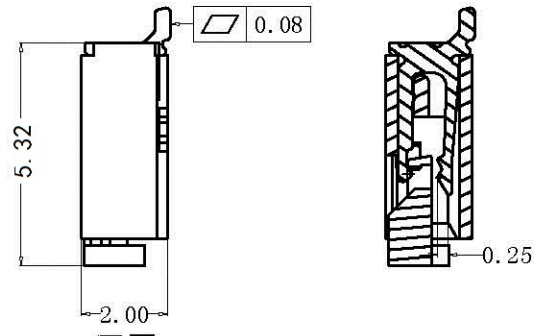
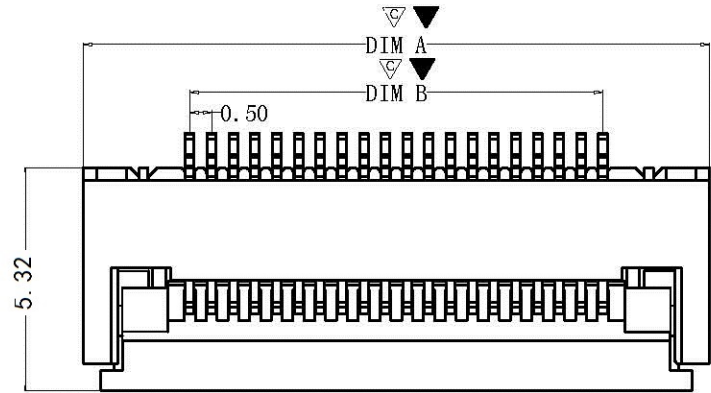


| REV. | DESCRIPTION | APPD | DATE |
|------|-------------|------|------|
| | | | |

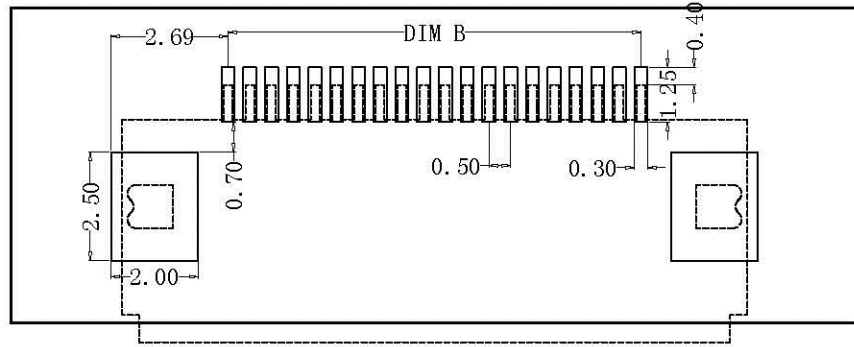
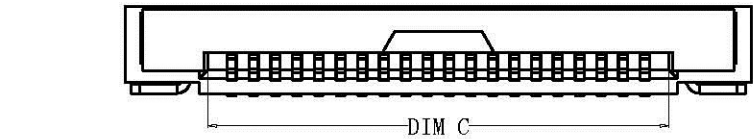
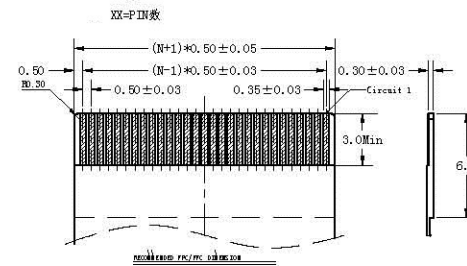


NOTES:
 1.MATERIAL:
 HOUSING: HIGH TEMPERATURE THERMOPLASTIC UL94V_0,COLOR:BLACK.
 CONTACT: COPPER ALLOYS.
 2.PLATING:
 UNDERPLATE: NICKEL.
 CONTACT AREA: TIN OVER NICKEL.
 3.MULTIMEDIA CARD COMPATIBLE.

| PIN NO. | DIM. A | DIM. B | DIM. C |
|---------|--------|--------|--------|
| 28 | 18.40 | 13.50 | 14.57 |
| 29 | 18.90 | 14.00 | 15.07 |
| 30 | 19.40 | 14.50 | 15.57 |
| 31 | 19.90 | 15.00 | 16.07 |
| 32 | 20.40 | 15.50 | 16.57 |
| 33 | 20.90 | 16.00 | 17.07 |
| 34 | 21.40 | 16.50 | 17.57 |
| 35 | 21.90 | 17.00 | 18.07 |
| 36 | 22.40 | 17.50 | 18.57 |
| 37 | 22.90 | 18.00 | 19.07 |
| 38 | 23.40 | 18.50 | 19.57 |
| 39 | 23.90 | 19.00 | 20.07 |
| 40 | 24.40 | 19.50 | 20.57 |
| 41 | 24.90 | 20.00 | 21.07 |
| 42 | 25.40 | 20.50 | 21.57 |
| 43 | 25.90 | 21.00 | 22.07 |
| 44 | 26.40 | 21.50 | 22.57 |
| 45 | 26.90 | 22.00 | 23.07 |
| 46 | 27.40 | 22.50 | 23.57 |
| 47 | 27.90 | 23.00 | 24.07 |
| 48 | 28.40 | 23.50 | 24.57 |
| 49 | 28.90 | 24.00 | 25.07 |
| 50 | 29.40 | 24.50 | 25.57 |
| 51 | 29.90 | 25.00 | 26.07 |
| 52 | 30.40 | 25.50 | 26.57 |
| 53 | 30.90 | 26.00 | 27.07 |
| 54 | 31.40 | 26.50 | 27.57 |
| 55 | 31.90 | 27.00 | 28.07 |
| 56 | 32.40 | 27.50 | 28.57 |
| 57 | 32.90 | 28.00 | 29.07 |
| 58 | 33.40 | 28.50 | 29.57 |
| 59 | 33.90 | 29.00 | 30.07 |
| 60 | 34.40 | 29.50 | 30.57 |

| PIN NO. | DIM. A | DIM. B | DIM. C |
|---------|--------|--------|--------|
| 04 | 6.40 | 1.50 | 2.57 |
| 05 | 6.90 | 2.00 | 3.07 |
| 06 | 7.40 | 2.50 | 3.57 |
| 07 | 7.90 | 3.00 | 4.07 |
| 08 | 8.40 | 3.50 | 4.57 |
| 09 | 8.90 | 4.00 | 5.07 |
| 10 | 9.40 | 4.50 | 5.57 |
| 11 | 9.90 | 5.00 | 6.07 |
| 12 | 10.40 | 5.50 | 6.57 |
| 13 | 10.90 | 6.00 | 7.07 |
| 14 | 11.40 | 6.50 | 7.57 |
| 15 | 11.90 | 7.00 | 8.07 |
| 16 | 12.40 | 7.50 | 8.57 |
| 17 | 12.90 | 8.00 | 9.07 |
| 18 | 13.40 | 8.50 | 9.57 |
| 19 | 13.90 | 9.00 | 10.07 |
| 20 | 14.40 | 9.50 | 10.57 |
| 21 | 14.90 | 10.00 | 11.07 |
| 22 | 15.40 | 10.50 | 11.57 |
| 23 | 15.90 | 11.00 | 12.07 |
| 24 | 16.40 | 11.50 | 12.57 |
| 25 | 16.90 | 12.00 | 13.07 |
| 26 | 17.40 | 12.50 | 13.57 |
| 27 | 17.90 | 13.00 | 14.07 |

订购需知:
 XDFC-0520-xxP

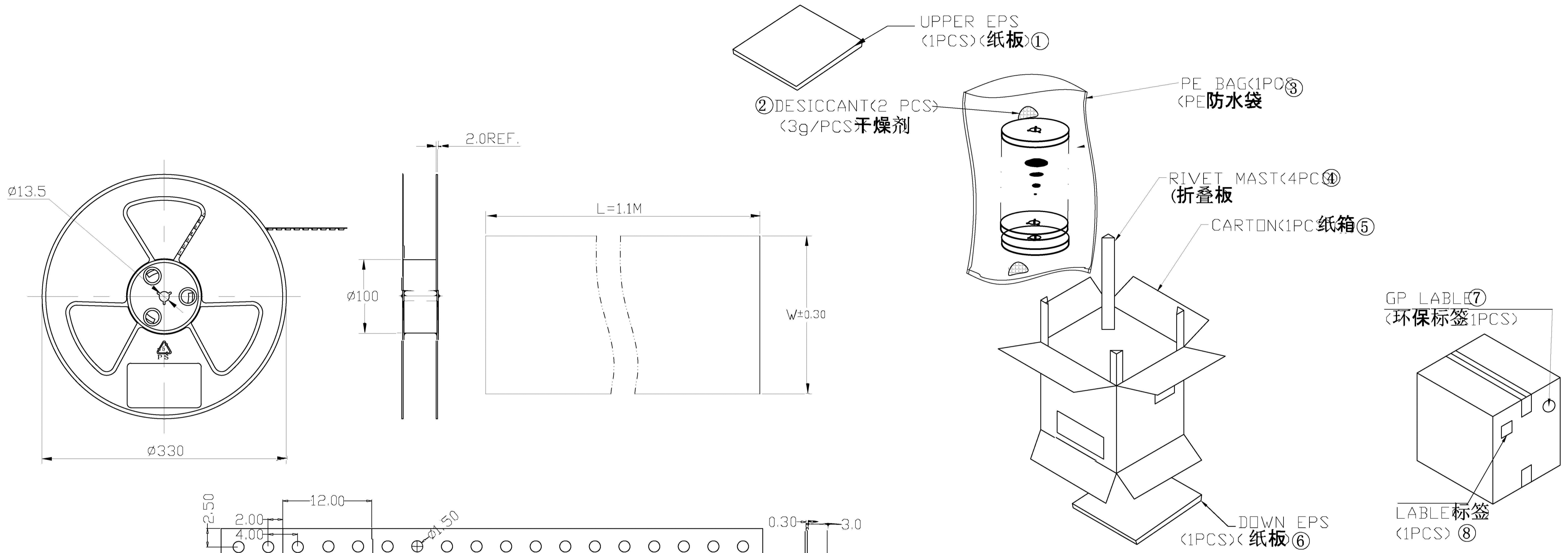


| | |
|---|---|
| DWG NO: LXFPC-052001 | MATERIAL: |
| LOT NO: | FINSH: |
| UNIT: MM | SIZE: A4 |
| TOLERANCES: X.X=±0.35 X.XX=±0.25 X.XXX=±0.15 | GENERAL ANGLE: X.X=±3.0° X.XX=±2.0° |
| DR: 杨凯 2011/03/31 | CHK: |
| APP: | |

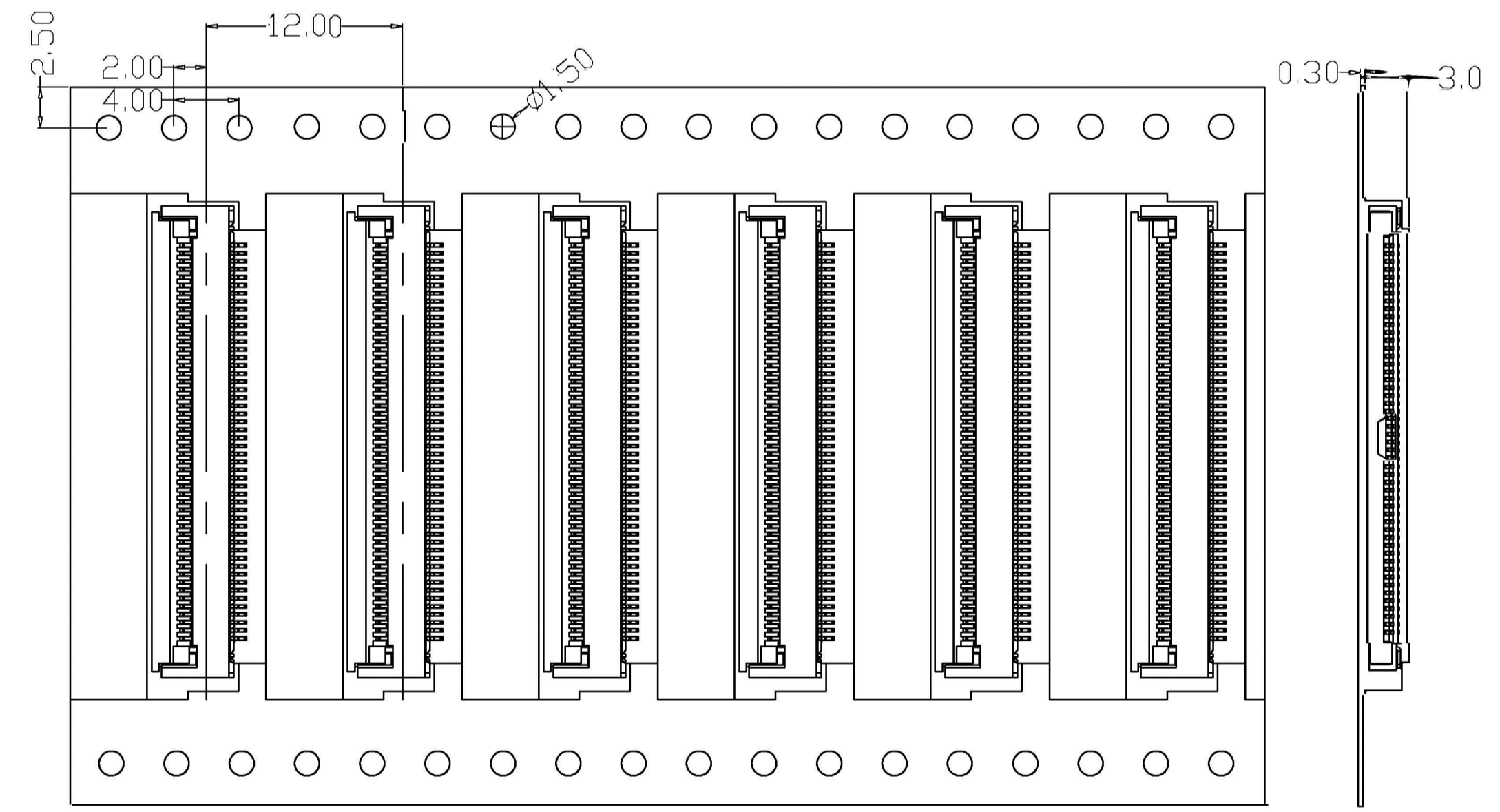
深圳市连欣科技有限公司
 Shenzhen City Lianxin Technology Co., Ltd

| | |
|------------------------------|------------------|
| TITLE: FPC 0.5PH 2.0H 翻盖式 | |
| PART NO: XDFC-0520-xxP | REV: C/O |
| SCALE: 1:1 | SHEET: 1 OF 1 |


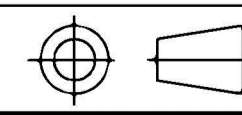
| REV. | DESCRIPTION | APPD | DATE |
|------|-------------|------|------|
| | | | |



1. 材质要求:
- 1.1 纸箱的材质要求为A; 外形尺寸为350*350*340CM;
 - 1.2 卷盘的材质为PVC;
2. 包装要求:
- 1 将卷带放入包装机后, 前空5PCS, 后放产品2000PCS, 再后空5PCS; 上带留200MM长度。
 - 2 将包装好的产品从包装机上取下用外带包装好, 盘上贴好标签 将盘装产品放入PE袋内, 放干燥剂, 叠好口部。
 - 3 箱底放入纸板, 把装好PE袋的产品放入箱中, 四角用折叠板塞好, 顶部再放一块纸板
 - 4 封箱, 并在纸箱外贴上标签产品标签, 环保标签。
- 备注:
1. 若有未装满之零数, 必须用泡棉塞满。
 2. 针对于包装方式可根据客户要求包装。



| PIN NO. | W | A | B | A0 | B0 | PCS /REEL | REEL/CARTON | SUM (PCS) |
|-------------|----|------|------|-------------------|-----|-----------|-------------|-----------|
| 4PIN~8PIN | 16 | 7.5 | — | 6.4+ (n-4)*0.5 | 5.5 | 2000 | 15 | 60000 |
| 9PIN~24PIN | 24 | 11.5 | — | | 5.5 | 2000 | 10 | 40000 |
| 25PIN~36PIN | 32 | 14.2 | 28.4 | (n=pin no) | 5.5 | 2000 | 8 | 32000 |
| 37PIN~55PIN | 44 | 20.2 | 40.4 | | 5.5 | 2000 | 6 | 24000 |
| 56PIN~60PIN | 56 | 26.2 | 52.4 | | 5.5 | 2000 | 5 | 20000 |

| | | | | |
|--|----------|---|---------------|--|
| DWG NO: | | MATERIAL: | |  深圳市连欣科技有限公司 Shenzhen City Lianxin Technology Co. LTD |
| LOT NO: | | FINISH: | | |
| UNIT: MM | SIZE: A4 | COLOR: | | TITLE: FPC 0.5PH H2.0 前翻 |
| TOLERANCES: X.X±0.35 X.XX±0.25 X.XXX±0.15 | | GENERAL ANGLE: X.X±3.0° X.XX±2.0° | | DR: |
| | | | | CHK: |
| | | | | APP: |
| | | | | PART NO: |
| | | | | REV: C/0 |
| | | SCALE: 1:1 | SHEET: 1 OF 1 |  |

X-ON Electronics

Largest Supplier of Electrical and Electronic Components

Click to view similar products for [FFC & FPC Connectors](#) category:

Click to view products by [Lian Xin](#) manufacturer:

Other Similar products are found below :

[00-6200-227-022-800](#) [006205250500825+](#) [006205280500825+](#) [FPH-1602G](#) [086222026001800](#) [52610-0675](#) [62674-201121DLF](#) [52746-1671-TR250](#) [10051922-1610EHLF](#) [10051922-2810EHLF](#) [686322124422](#) [XF3M-2915-1B-R100](#) [AYF353125A](#) [AYF530665TA](#) [AYF534065TA](#) [20FLH-RSM1-TB](#) [PCA-7F-25-HL-3-G](#) [207356-1](#) [52807-0430](#) [FFC05011-10SBB114W5M](#) [502250-8027](#) [FH28K-40S-0.5SH](#) [200528-0260](#) [FH28K-10S-0.5SH](#) [501951-1250](#) [X05B20U43T](#) [0.5K-DX-30PWB](#) [DS1020-08-10VBT12](#) [THD0515-34CL-GF](#) [X05A10L28G](#) [ECC2841061EU](#) [20539-030E-01](#) [1.0K-DHQX-16PWB](#) [1.0K-DHQX-30PWB](#) [1775333-6](#) [10054365-202110ELF](#) [10054365-242110ELF](#) [10054365-282110ELF](#) [10064555-392220HLF](#) [59453-041110EBHLF](#) [59453-091110EDHLF](#) [62674-241141ALF](#) [62684-432100ALF](#) [62684-451100AHLF](#) [62684-5721N0ALF](#) [HFW11R-1STE1MTLF](#) [HFW12R-1STE9LF](#) [HFW14R-1STE9MTLF](#) [HFW18S-2STE9LF](#) [HFW20R-1STAE1HLF](#)