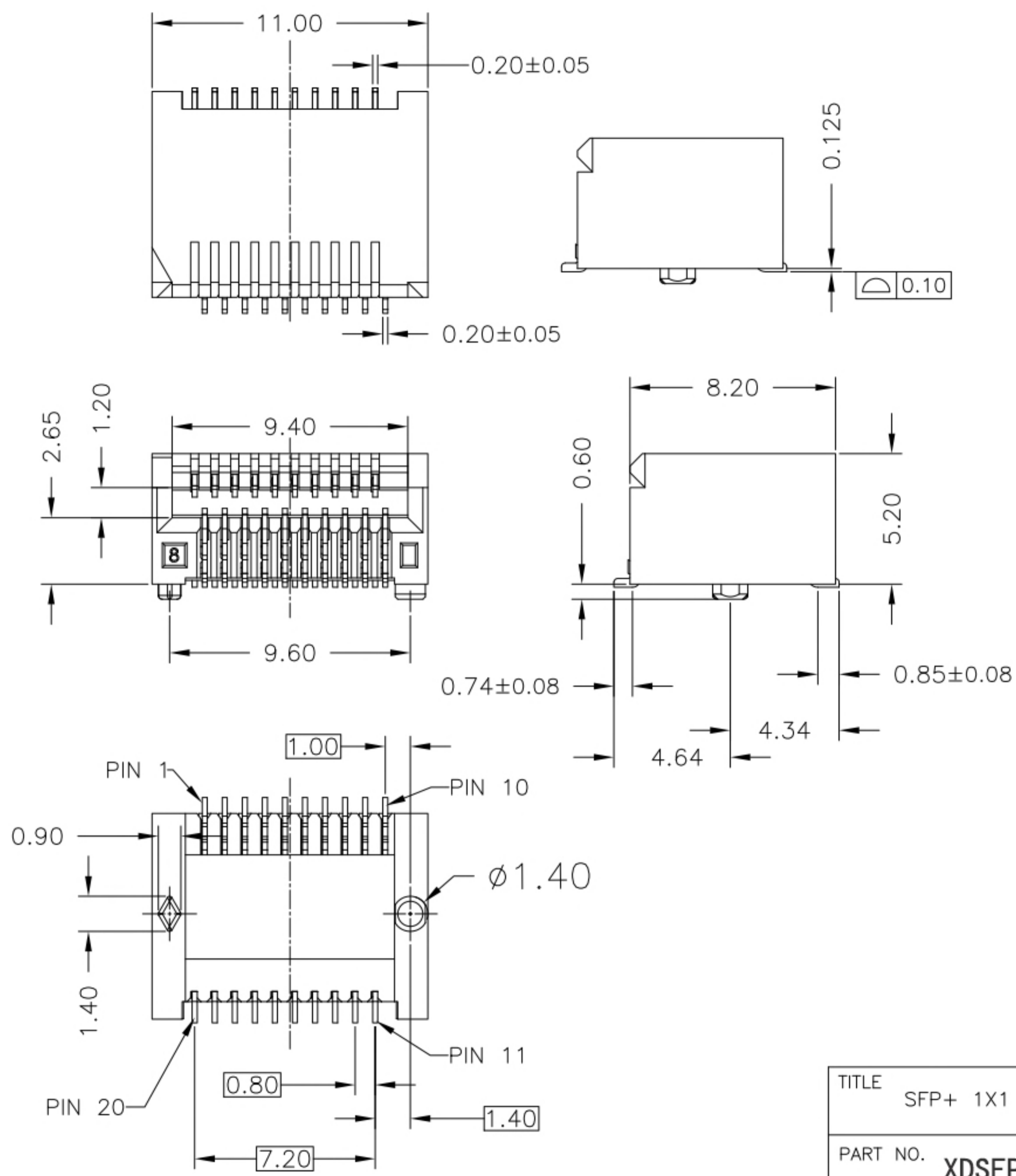
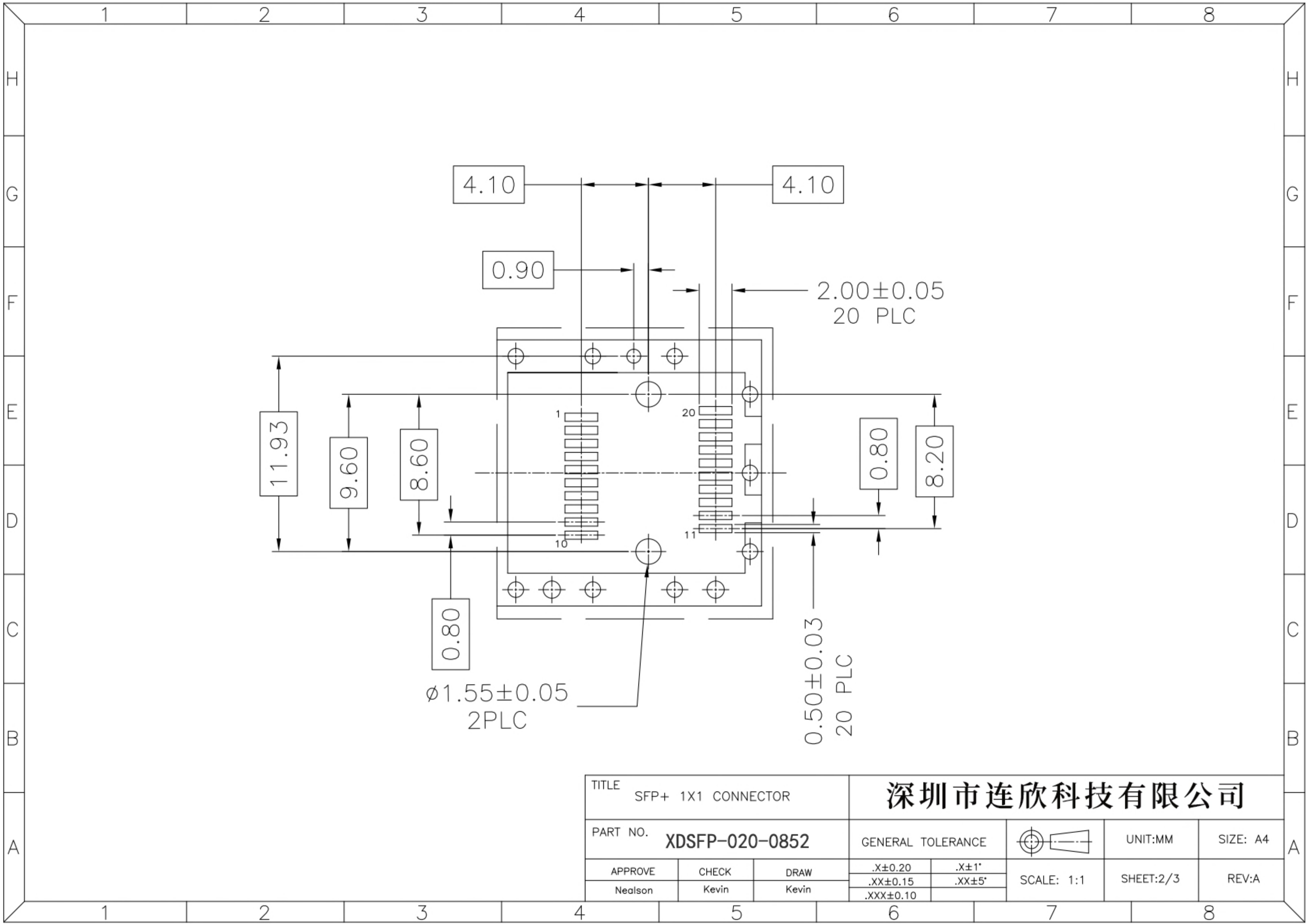


REV	DESCRIPTION OF CHANGE	REVIEWED BY	ISSUE DATE
A	FIRST ISSUE	Nealson	2021-08-01



- NOTES:
- MATERIAL
HOUSING: HIGH TEMPERATURE LCP, Black, UL94 V-0.
 - CONTACTS: PHOSPHOR BRONZE
PLATING :15 μ " GOLD ON MATING AREA,
GOLD FLASH PLATING ON
SOLDER TAILS, 50 μ " NICKEL
UNDERPLATING OVERALL.
 - MECHANICAL REQUIREMENT:
3.1 DURABILITY:100 CYCLES NIN.
3.2 INSERTION AND EXTRACTION FORCE:40N MAX. & 11.5N MAX.
 - ENVIRONMENTAL:
4.1 CONTACT RESISTANCE:20 MILLIOHMS MAX INITIAL.
4.2 DIELECTRIC WITHSTANDING VOLTAGE: 300V AC/MIN.
4.3 CURRENT RATING: 0.5 Amps Max.
4.4 OPERATION: -40°C TO +95°C
4.5 STORAGE: -55°C TO +105°C
4.6 REFLOW SOLDERING TEMPERATURE: 255~265° MAXLIMUM
FOR 5~10 SECONDS.
4.9 ROHS COMPLIANT
 - PACKAGING: TAPE AND REEL

TITLE SFP+ 1X1 CONNECTOR			深圳市连欣科技有限公司			
PART NO. XDSFP-020-0852			GENERAL TOLERANCE		UNIT:MM	SIZE: A4
APPROVE	CHECK	DRAW	.X±0.20	.X±1°	SCALE: 1:1	SHEET:1/3
Nealson	Kevin	Kevin	.XX±0.15	.XX±5°		
			.XXX±0.10			
						REV:A

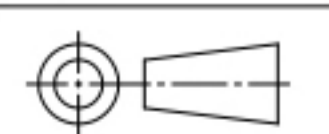


TITLE SFP+ 1X1 CONNECTOR

深圳市连欣科技有限公司

PART NO. XDSFP-020-0852

GENERAL TOLERANCE



UNIT:MM SIZE: A4

APPROVE
Nealson

CHECK
Kevin

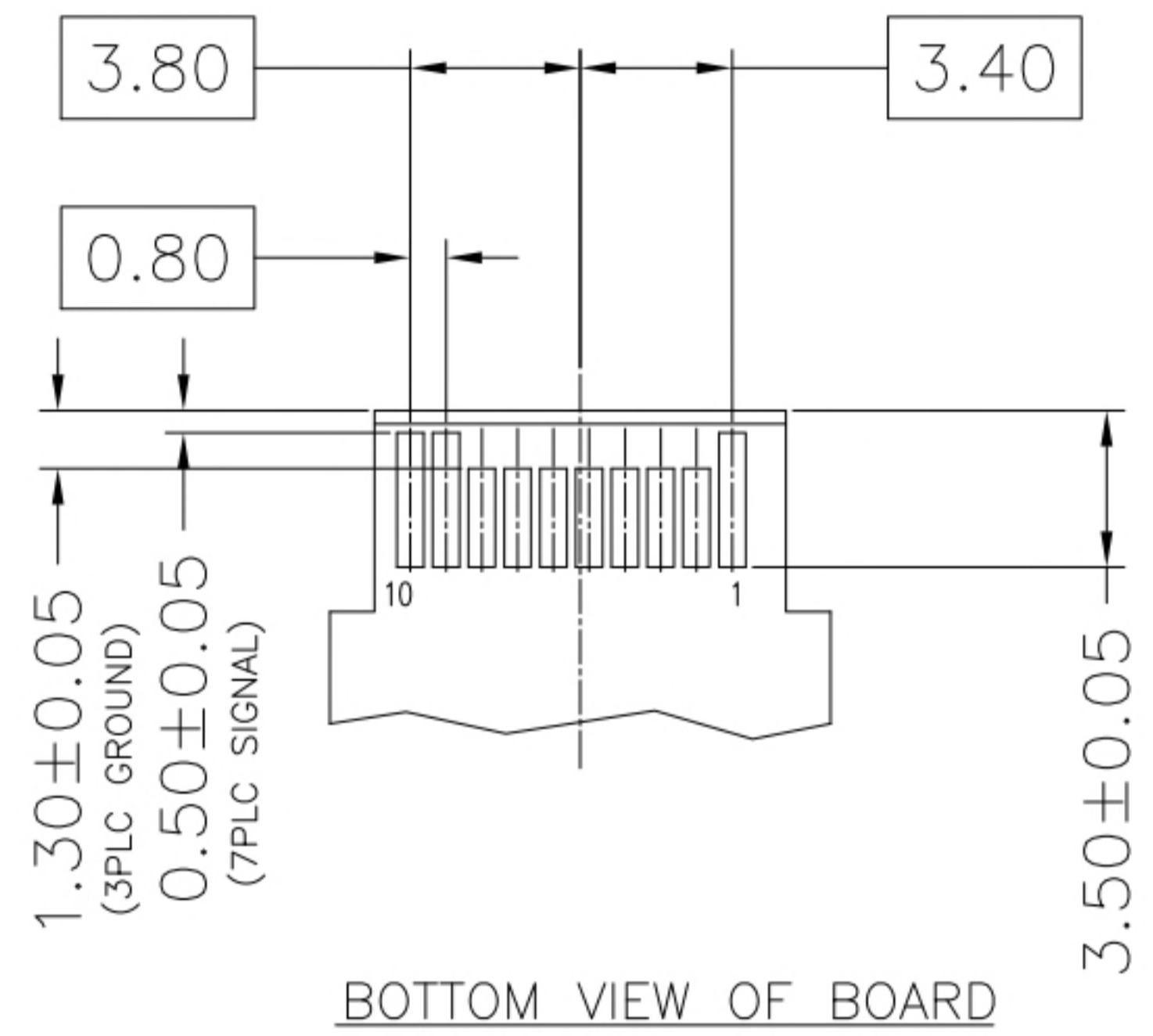
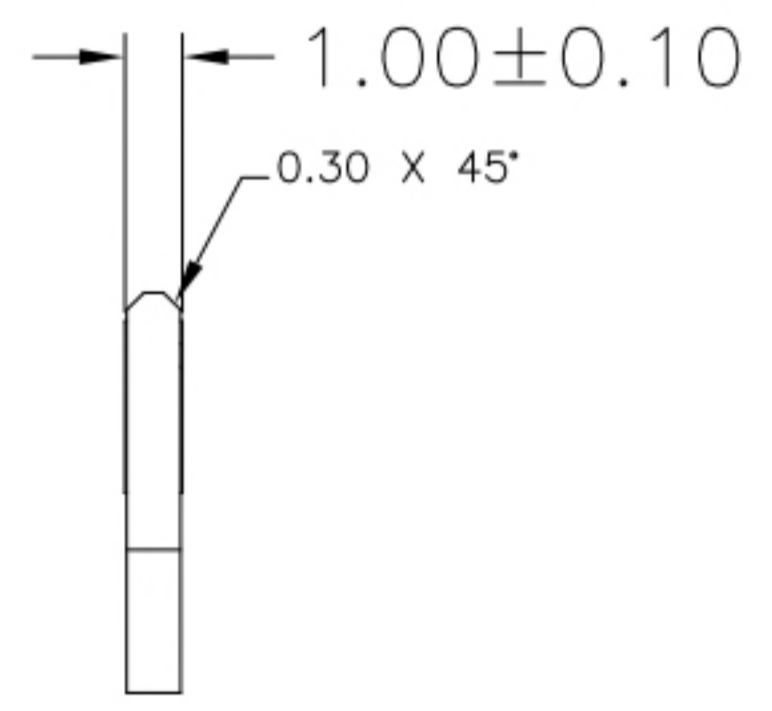
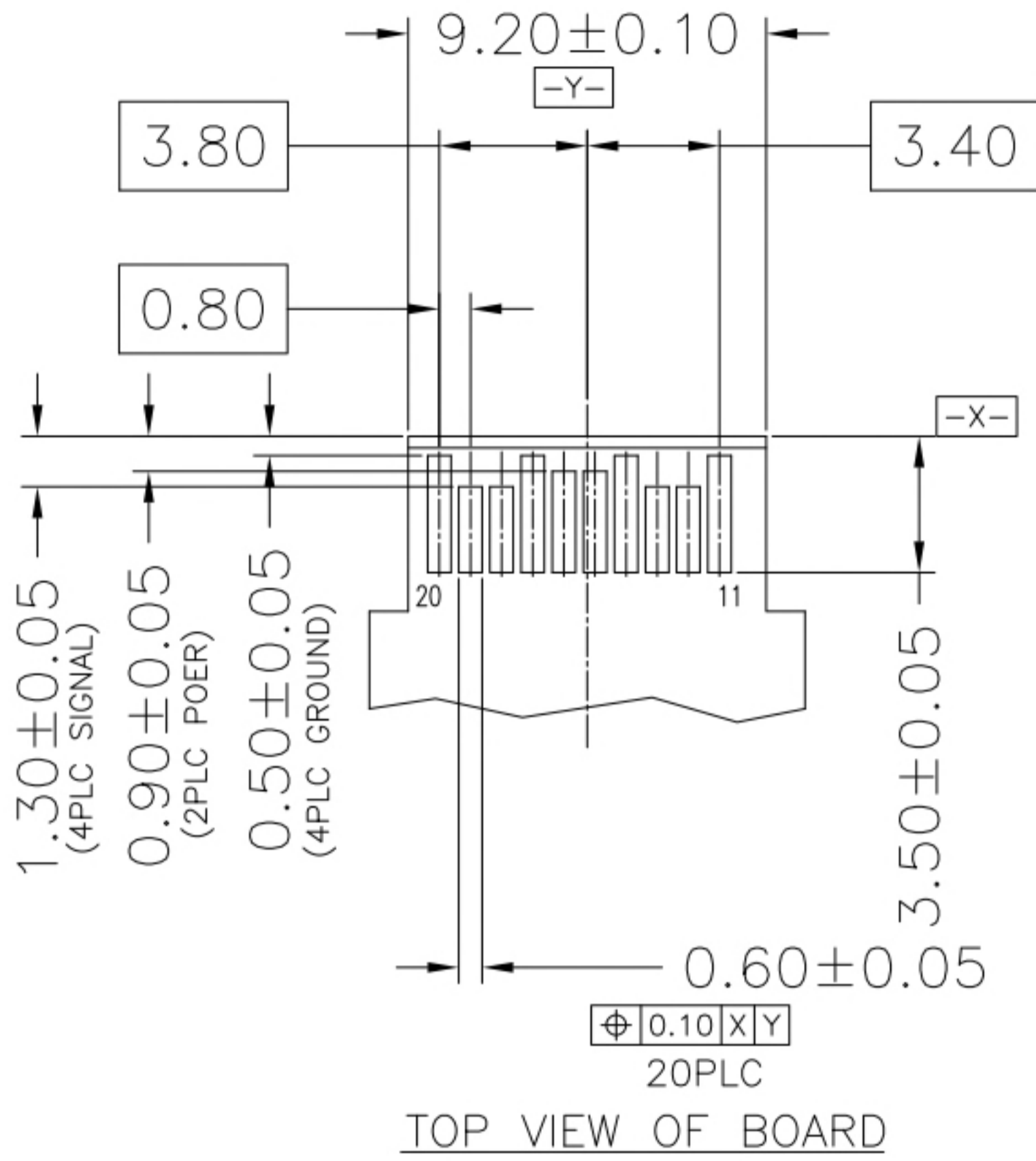
DRAW
Kevin

.X±0.20	.X±1°
.XX±0.15	.XX±5°
.XXX±0.10	

SCALE: 1:1

SHEET:2/3

REV:A



RECOMMENDED LAYOUT DETAIL MATING TRANSCEIVER PCB

TITLE SFP+ 1X1 CONNECTOR			深圳市连欣科技有限公司			
PART NO. XDSFP-020-0852			GENERAL TOLERANCE		UNIT:MM	SIZE: A4
APPROVE	CHECK	DRAW	.X±0.20	.X±1°	SCALE: 1:1	SHEET:3/3
Nealson	Kevin	Kevin	.XX±0.15	.XX±5°		
			.XXX±0.10			
					REV:A	

X-ON Electronics

Largest Supplier of Electrical and Electronic Components

Click to view similar products for [Standard Card Edge Connectors](#) category:

Click to view products by [Lian Xin](#) manufacturer:

Other Similar products are found below :

[CR7E-30DB-3.96E\(72\)](#) [6565204-6](#) [1437274-4](#) [1-582587-1](#) [284-0102-12100](#) [286-0052-12101A](#) [306022901000000](#) [A6D22DS29C2](#) [1926088-2](#) [245-062-520-350](#) [287-0032-12101](#) [306-028-525-102](#) [307-072-526-202](#) [330-030-500-278](#) [345-060-559-303](#) [534671-1](#) [341-240-317](#) [345-044-500-300](#) [346-240-318](#) [C7D10DS29C1M133](#) [395-100-524-300](#) [09-07-2032](#) [10035388-802LF](#) [10115859-011LF](#) [10122859-009LF](#) [101269333204245CLF](#) [530555-1](#) [66925-516LF](#) [5145409-2](#) [73726-0005](#) [66308-1](#) [EBC05DRXN](#) [KSLX-62-BR](#) [CE100F26-7-C](#) [CE100F28-3-D](#) [CE100F28-4-D](#) [CE156F22-9-C](#) [CT100F24-3-D](#) [CT100F24-6-C](#) [MLSS100-12-C](#) [SCC100F-11-C](#) [SCC100F-20-C](#) [SCC100F-24-C](#) [SCC100F-25-C](#) [3-530656](#) [2512250177](#) [285-0112-12300](#) [346-068-556-300](#) [284-0492-11000](#) [287-0032-12301](#)