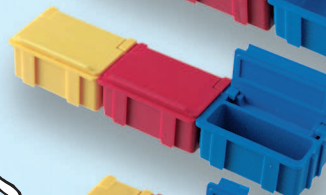
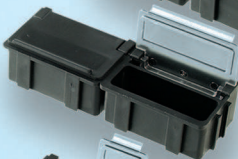
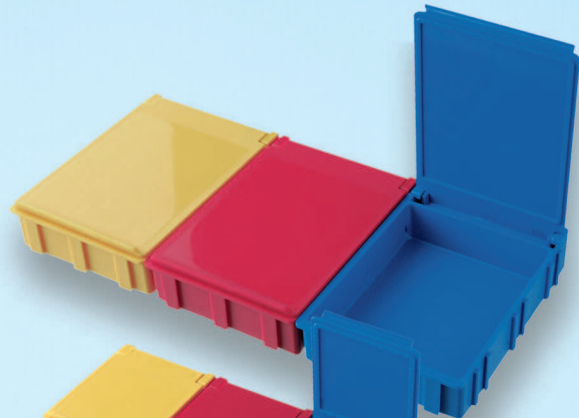
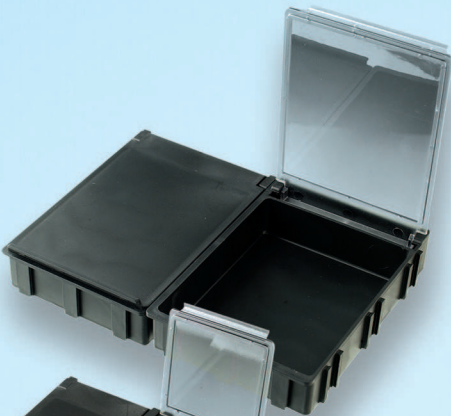
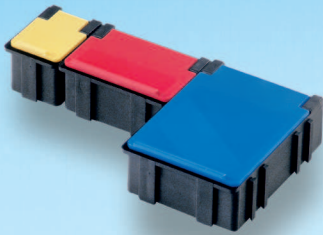


CONDUCTIVE BOXES + SMD-BOXES

- SMD COLLAPSIBLE BOXES
- SMD BOXES
- SMD CABINETS
- SMD SPOOL STANDS
- CONDUCTIVE CABINETS
- CONDUCTIVE BOXES
- CONDUCTIVE CASES



Also known as
„mouse's loo“!



SMD boxes – non-conductive

		Art. No.	Lid	Bottom part	Inside dimensions	Characteristics
N 1		SMD-Box N 1-2-3-2-1	transparent	○	16 x 12 x 15	non-conductive
		SMD-Box N 1-2-3-4-1	transparent	●	16 x 12 x 15	non-conductive
		SMD-Box N 1-2-3-6-1	transparent	●	16 x 12 x 15	non-conductive
		SMD-Box N 1-2-3-7-1	transparent	●	16 x 12 x 15	non-conductive
		SMD-Box N 1-2-3-8-1	transparent	●	16 x 12 x 15	non-conductive
		SMD-Box N 1-2-2-2-2	○	○	16 x 12 x 15	non-conductive
		SMD-Box N 1-2-2-4-4	●	●	16 x 12 x 15	non-conductive
		SMD-Box N 1-2-2-6-6	●	●	16 x 12 x 15	non-conductive
		SMD-Box N 1-2-2-7-7	●	●	16 x 12 x 15	non-conductive
		SMD-Box N 1-2-2-8-8	●	●	16 x 12 x 15	non-conductive
N 2		SMD-Box N 2-2-3-2-1	transparent	○	37 x 12 x 15	non-conductive
		SMD-Box N 2-2-3-4-1	transparent	●	37 x 12 x 15	non-conductive
		SMD-Box N 2-2-3-6-1	transparent	●	37 x 12 x 15	non-conductive
		SMD-Box N 2-2-3-7-1	transparent	●	37 x 12 x 15	non-conductive
		SMD-Box N 2-2-3-8-1	transparent	●	37 x 12 x 15	non-conductive
		SMD-Box N 2-2-2-2-2	○	○	37 x 12 x 15	non-conductive
		SMD-Box N 2-2-2-4-4	●	●	37 x 12 x 15	non-conductive
		SMD-Box N 2-2-2-6-6	●	●	37 x 12 x 15	non-conductive
		SMD-Box N 2-2-2-7-7	●	●	37 x 12 x 15	non-conductive
		SMD-Box N 2-2-2-8-8	●	●	37 x 12 x 15	non-conductive
N 3		SMD-Box N 3-2-3-2-1	transparent	○	41 x 37 x 15	non-conductive
		SMD-Box N 3-2-3-4-1	transparent	●	41 x 37 x 15	non-conductive
		SMD-Box N 3-2-3-6-1	transparent	●	41 x 37 x 15	non-conductive
		SMD-Box N 3-2-3-7-1	transparent	●	41 x 37 x 15	non-conductive
		SMD-Box N 3-2-3-8-1	transparent	●	41 x 37 x 15	non-conductive
		SMD-Box N 3-2-2-2-2	○	○	41 x 37 x 15	non-conductive
		SMD-Box N 3-2-2-4-4	●	●	41 x 37 x 15	non-conductive
		SMD-Box N 3-2-2-6-6	●	●	41 x 37 x 15	non-conductive
		SMD-Box N 3-2-2-7-7	●	●	41 x 37 x 15	non-conductive
		SMD-Box N 3-2-2-8-8	●	●	41 x 37 x 15	non-conductive
N 4		SMD-Box N 4-2-3-2-1	transparent	○	68 x 57 x 15	non-conductive
		SMD-Box N 4-2-3-4-1	transparent	●	68 x 57 x 15	non-conductive
		SMD-Box N 4-2-3-6-1	transparent	●	68 x 57 x 15	non-conductive
		SMD-Box N 4-2-3-7-1	transparent	●	68 x 57 x 15	non-conductive
		SMD-Box N 4-2-3-8-1	transparent	●	68 x 57 x 15	non-conductive
		SMD-Box N 4-2-2-2-2	○	○	68 x 57 x 15	non-conductive
		SMD-Box N 4-2-2-4-4	●	●	68 x 57 x 15	non-conductive
		SMD-Box N 4-2-2-6-6	●	●	68 x 57 x 15	non-conductive
		SMD-Box N 4-2-2-7-7	●	●	68 x 57 x 15	non-conductive
		SMD-Box N 4-2-2-8-8	●	●	68 x 57 x 15	non-conductive
N 5		SMD-Box N 5-2-3-2-1	transparent	○	180 x 68 x 15	non-conductive
		SMD-Box N 5-2-3-4-1	transparent	●	180 x 68 x 15	non-conductive
		SMD-Box N 5-2-3-6-1	transparent	●	180 x 68 x 15	non-conductive
		SMD-Box N 5-2-3-7-1	transparent	●	180 x 68 x 15	non-conductive
		SMD-Box N 5-2-3-8-1	transparent	●	180 x 68 x 15	non-conductive
		SMD-Box N 5-2-2-2-2	○	○	180 x 68 x 15	non-conductive
		SMD-Box N 5-2-2-4-4	●	●	180 x 68 x 15	non-conductive
		SMD-Box N 5-2-2-6-6	●	●	180 x 68 x 15	non-conductive
		SMD-Box N 5-2-2-7-7	●	●	180 x 68 x 15	non-conductive
		SMD-Box N 5-2-2-8-8	●	●	180 x 68 x 15	non-conductive



CONDUCTIVE BOXES + SMD-BOXES

SMD boxes – conductive – dissipative

		Art. No.	Lid	Bottom part	Inside dimensions	Characteristics	
N 1	<p>Conductive block foam N 1 5 mm high</p>	SMD-Box N 1-6-6-10-10	●	●	16 x 12 x 15	⚠	
		SMD-Box N 1-6-6-10-1LS	transparent*	●	16 x 12 x 15	⚠	
		SMD-Box N 1-11-6-4-10	●	●	16 x 12 x 15	⚠ ⚠	NEW
		SMD-Box N 1-6-11-10-4	●	●	16 x 12 x 15	⚠ ⚠	NEW
		SMD-Box N 1-11-6-4-1 LS	transparent*	●	16 x 12 x 15	⚠ ⚠	
		SMD-Box N 1-11-6-6-1 LS	transparent*	●	16 x 12 x 15	⚠ ⚠	
		SMD-Box N 1-11-6-8-1 LS	transparent*	●	16 x 12 x 15	⚠ ⚠	
		Diss-SMD-Box N1-11-11-4-4	●	●	16 x 12 x 15	⚠	
		Diss-SMD-Box N1-11-11-6-6	●	●	16 x 12 x 15	⚠	
		Diss-SMD-Box N1-11-11-8-8	●	●	16 x 12 x 15	⚠	
N 2	<p>Conductive block foam N 2 5 mm high</p>	SMD-Box N 2-6-6-10-10	transparent*	●	37 x 12 x 15	⚠	
		SMD-Box N 2-6-6-10-1 LS	●	●	37 x 12 x 15	⚠	
		SMD-Box N 2-11-6-4-10	●	●	37 x 12 x 15	⚠ ⚠	NEW
		SMD-Box N 2-6-11-10-4	●	●	37 x 12 x 15	⚠ ⚠	NEW
		SMD-Box N 2-11-6-4-1 LS	transparent*	●	37 x 12 x 15	⚠ ⚠	
		SMD-Box N 2-11-6-6-1 LS	transparent*	●	37 x 12 x 15	⚠ ⚠	
		SMD-Box N 2-11-6-8-1 LS	transparent*	●	37 x 12 x 15	⚠ ⚠	
		Diss-SMD-Box N2-11-11-4-4	●	●	37 x 12 x 15	⚠	
		Diss-SMD-Box N2-11-11-6-6	●	●	37 x 12 x 15	⚠	
		Diss-SMD-Box N2-11-11-8-8	●	●	37 x 12 x 15	⚠	
N 3		SMD-Box N 3-6-6-10-10	●	●	41 x 37 x 15	⚠	
		SMD-Box N 3-6-6-10-1 LS	transparent*	●	41 x 37 x 15	⚠	
		SMD-Box N 3-11-6-4-10	●	●	41 x 37 x 15	⚠ ⚠	NEW
		SMD-Box N 3-6-11-10-4	●	●	41 x 37 x 15	⚠ ⚠	NEW
		SMD-Box N 3-11-6-4-1 LS	transparent*	●	41 x 37 x 15	⚠ ⚠	
		SMD-Box N 3-11-6-6-1 LS	transparent*	●	41 x 37 x 15	⚠ ⚠	
		SMD-Box N 3-11-6-8-1 LS	transparent*	●	41 x 37 x 15	⚠ ⚠	
		Diss-SMD-Box N3-11-11-4-4	●	●	41 x 37 x 15	⚠	
		Diss-SMD-Box N3-11-11-6-6	●	●	41 x 37 x 15	⚠	
		Diss-SMD-Box N3-11-11-8-8	●	●	41 x 37 x 15	⚠	
N 4		SMD-Box N 4-6-6-10-10	●	●	68 x 57 x 15	⚠	
		SMD-Box N 4-6-6-10-1 LS	transparent*	●	68 x 57 x 15	⚠	
		SMD-Box N 4-11-6-4-10	●	●	68 x 57 x 15	⚠ ⚠	NEW
		SMD-Box N 4-6-11-10-4	●	●	68 x 57 x 15	⚠ ⚠	NEW
		SMD-Box N 4-11-6-4-1 LS	transparent*	●	68 x 57 x 15	⚠ ⚠	
		SMD-Box N 4-11-6-6-1 LS	transparent*	●	68 x 57 x 15	⚠ ⚠	
		SMD-Box N 4-11-6-8-1 LS	transparent*	●	68 x 57 x 15	⚠ ⚠	
		Diss-SMD-Box N4-11-11-4-4	●	●	68 x 57 x 15	⚠	
		Diss-SMD-Box N4-11-11-6-6	●	●	68 x 57 x 15	⚠	
		Diss-SMD-Box N4-11-11-8-8	●	●	68 x 57 x 15	⚠	
N 5		SMD-Box N 5-6-6-10-10	●	●	180 x 68 x 15	⚠	
		SMD-Box N 5-6-6-10-1 LS	transparent*	●	180 x 68 x 15	⚠	

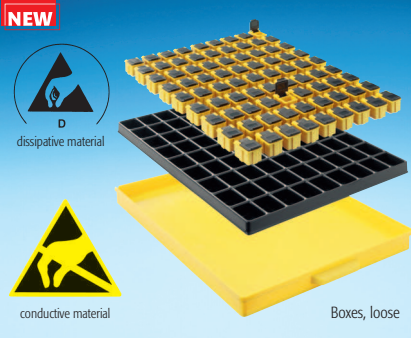
Dimensions subject to errors and corrections!

*transparent = smoke-crystal clear with vapour-deposited conductive layer as surface

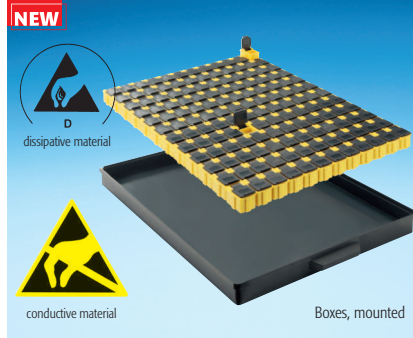


SMD CABINETS WITH CHIP CONTAINERS

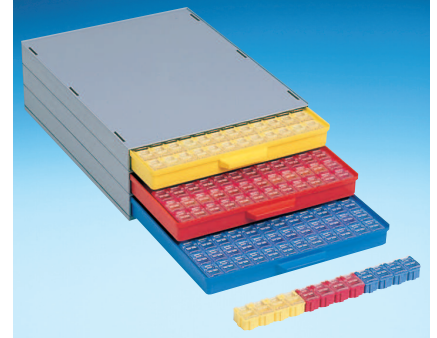
N 1



Art. No. **81 SMD-Boxen N1 DISS-4-10**
 Drawer in yellow DISS with vacuum-formed insert, black ESD and 81 SMD boxes N1 yellow DISS with black ESD lids

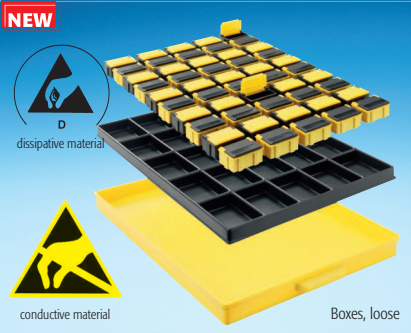


Art. No. **144 SMD-Boxen N1 DISS-4-10**
 Drawer in black ESD with 144 SMD boxes N1 as a block yellow DISS with black ESD lids

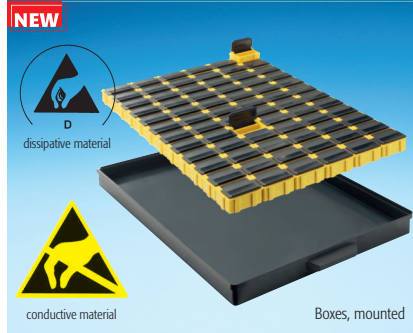


Art. No. **144 SMD-Boxen N1**
 fitting exactly into **A 1-4/16-6-10**
 Inside Dimensions 340 x 250 x 22

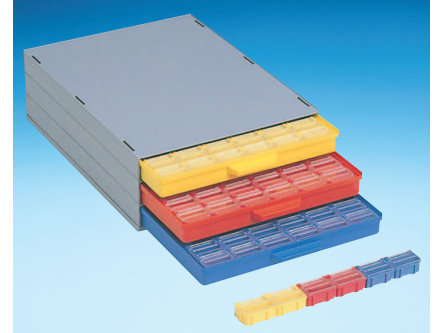
N 2



Art. No. **50 SMD-Boxen N2 DISS-4-10**
 Drawer in yellow DISS with vacuum-formed insert, black ESD and 25 SMD boxes N2 yellow DISS with black ESD lids and 25 SMD boxes N2 black ESD with yellow DISS lids

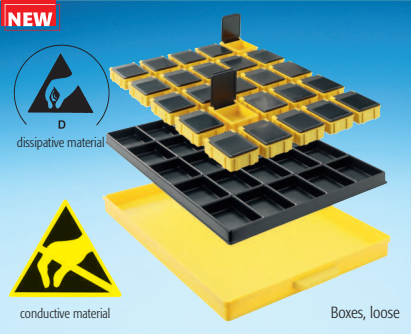


Art. No. **72 SMD-Boxen N2 DISS-4-10**
 Drawer black ESD with 72 SMD boxes N2 as a block yellow DISS with black ESD lids

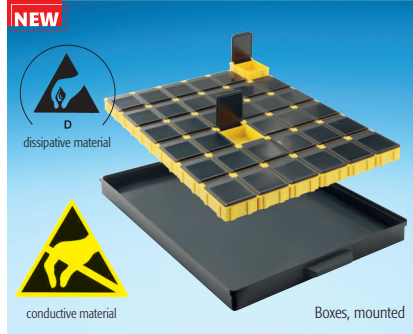


Art. No. SMD cabinet **A 1-4 Bunt 72**
 Cabinet with 3 drawers incl.
 3 x 72 = 216 pcs

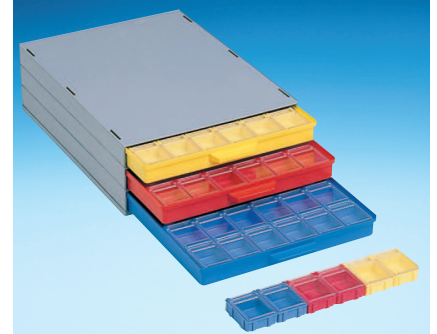
N 3



Art. No. **25 SMD-Boxen N3 DISS-4-10**
 Drawer yellow DISS with vacuum-formed insert, black ESD and 25 SMD boxes N3 yellow DISS with black ESD lids



Art. No. **36 SMD-Boxen N3 DISS-4-10**
 Drawer black ESD with 36 SMD boxes N3 as a block yellow DISS with black ESD lids

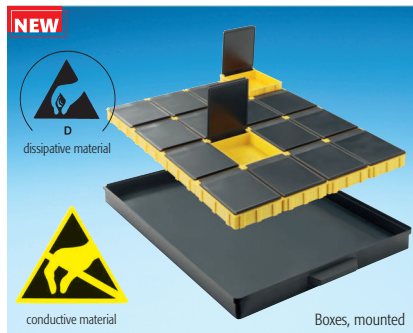


Art. No. SMD cabinet **A 1-4 Bunt 36**
 Cabinet with 3 drawers incl.
 3 x 36 = 108 pcs

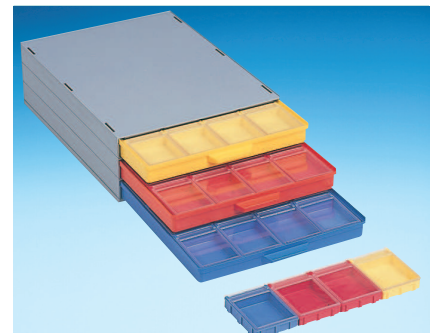
N 4



Also known as „mouse's loo“!



Art. No. **16 SMD-Boxen N4 DISS-4-10**
 Drawer black ESD with 16 SMD boxes N4 as a block yellow DISS with black ESD lids



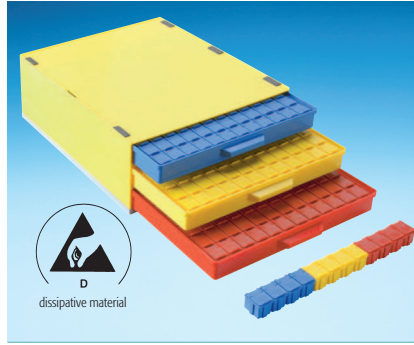
Art. No. SMD cabinet **A 1-4 Bunt 16**
 Cabinet with 3 drawers incl.
 3 x 16 = 48 pcs



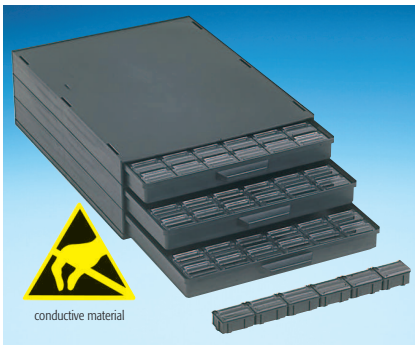
MIXED-SMD-CABINETS



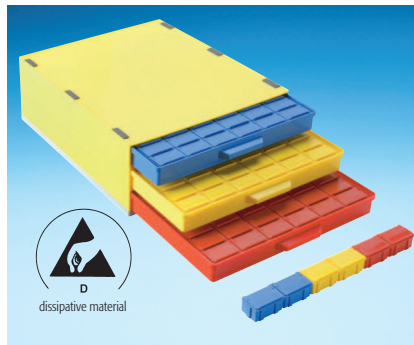
Art. No. SMD cabinet **A 1-4 ESD 144**
Cabinet with 3 drawers incl.
3 x 144 = 432 pcs



Art. No. SMD cabinet **A 1-4 DISS 144**
Cabinet with 3 drawers incl.
3 x 144 = 432 pcs



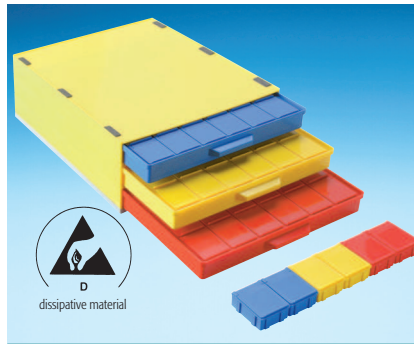
Art. No. SMD cabinet **A 1-4 ESD 72**
Cabinet with 3 drawers incl.
3 x 72 = 216 pcs



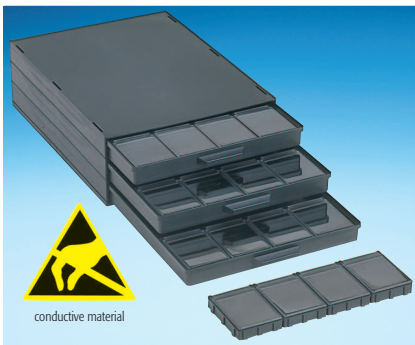
Art. No. SMD cabinet **A 1-4 DISS 72**
Cabinet with 3 drawers incl.
3 x 72 = 216 pcs



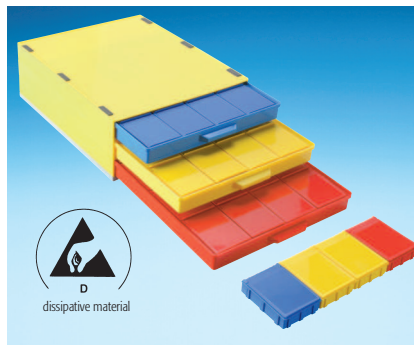
Art. No. SMD cabinet **A 1-4 ESD 36**
Cabinet with 3 drawers incl.
3 x 36 = 108 pcs



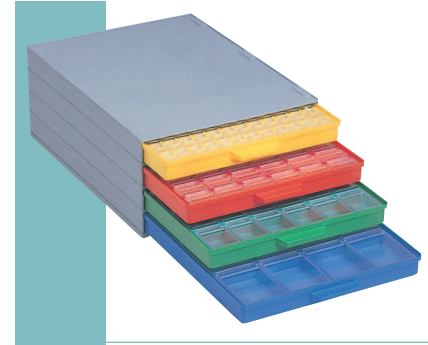
Art. No. SMD cabinet **A 1-4 DISS 36**
Cabinet with 3 drawers incl.
3 x 36 = 108 pcs



Art. No. SMD cabinet **A 1-4 ESD 16**
Cabinet with 3 drawers incl.
3 x 16 = 48 pcs



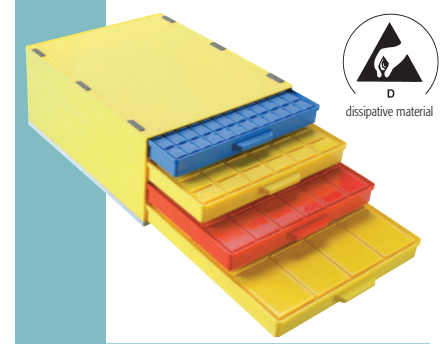
Art. No. SMD cabinet **A 1-4 DISS 16**
Cabinet with 3 drawers incl.
3 x 16 = 48 pcs



Art. No. SMD cabinet **A 1-4/4 Bunt MIX**
Cabinet with 4 drawers various SMD
collapsible boxes per drawer



Art. No. SMD cabinet **A 1-4/4 ESD MIX**
Cabinet with 4 drawers various SMD
collapsible boxes per drawer

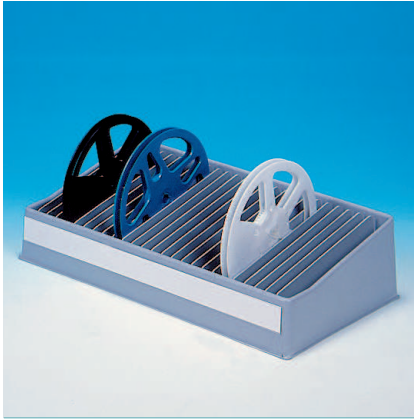


Art. No. SMD cabinet **A 1-4/4 DISS MIX**
Cabinet with 4 drawers various SMD
collapsible boxes per drawer



Also known as
„mouse's loo“!

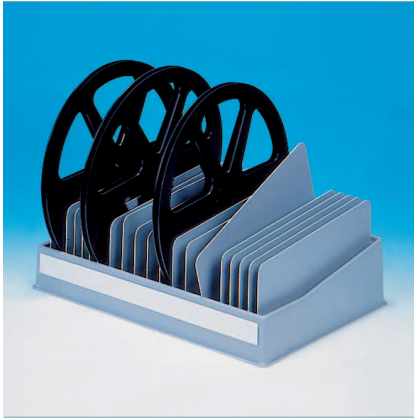
SMD SPOOL RACK



Art. No. **V 11-4** (not conductive)
with 25 variable partitions and
continuous identification rail
(for spools up to Ø 250)

Basic dimensions 450 x 240

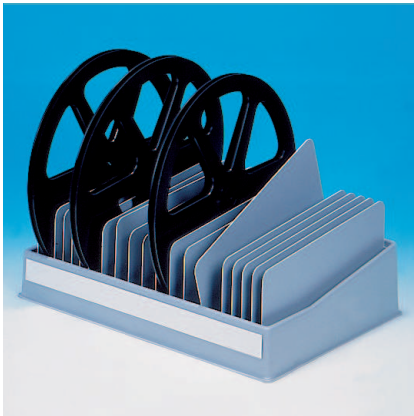
Colours



Art. No. **V 11-7**
with 25 variable partitions and
continuous identification rail
(for spools up to Ø 330)

Basic dimensions 455 x 315

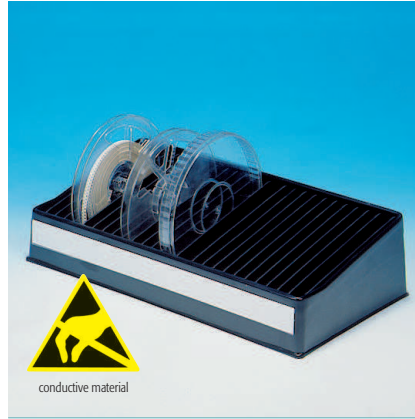
Colours



Art. No. **V 11-14**
with 10 variable partitions and
continuous identification rail
(for spools up to Ø 380)

Basic dimensions 455 x 360

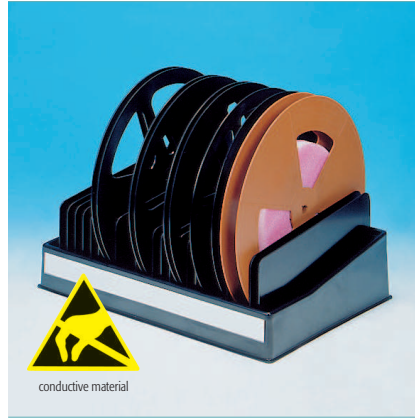
Colours



Art. No. **V 11-4-6-10** (conductive)
with 25 variable partitions and
continuous identification rail
(for spools up to Ø 250)

Basic dimensions 450 x 240

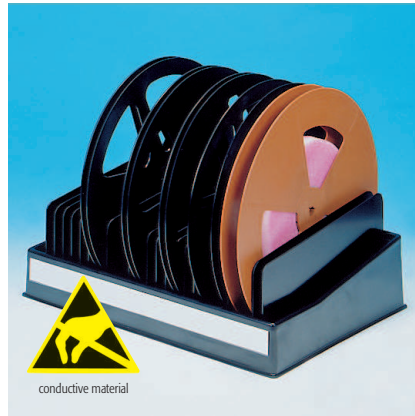
Colours



Art. No. **V 11-7-6-10** (conductive)
with 25 variable partitions and
continuous identification rail
(for spools up to Ø 330)

Basic dimensions 455 x 315

Colours



Art. No. **V 11-14-6-10** (conductive)
with 10 variable partitions and
continuous identification rail
(for spools up to Ø 380)

Basic dimensions 455 x 360

Colours



Art. No. **V 11-8-6-10** (conductive)
Spool stands for horizontal storage
of SMD spools up to Ø 180
(First in/first out)

Outside dimensions 186 x 173 x 210

Inside dimensions 182 x 169 x 190



Art. No. **V 11-9-6-10** (conductive)
Spool stands for horizontal storage
of SMD spools up to Ø 330
(First in/first out)

Outside dimensions 339 x 319 x 210

Inside dimensions 335 x 315 x 190



Art. No. **V 11-15-6-10** (conductive)
Spool stands for horizontal storage
of SMD spools up to Ø 380
(First in/first out)

Outside dimensions 380 x 370 x 250

Inside dimensions 375 x 365 x 230

CONDUCTIVE BOXES + SMD-BOXES

SMD CABINETS WITH ROUND BOXES FOR CHIPS



Art. No. **V 11-5**
SMD packing set with 32 cavities
18 Ø x 12 with individual
top cover (non-conductive)

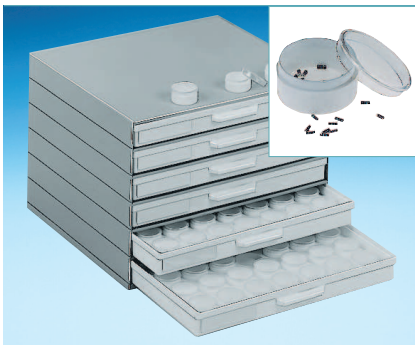


Art. No. **A 1-3 SMD**
for 6 pcs **V 11-5** (without top cover)

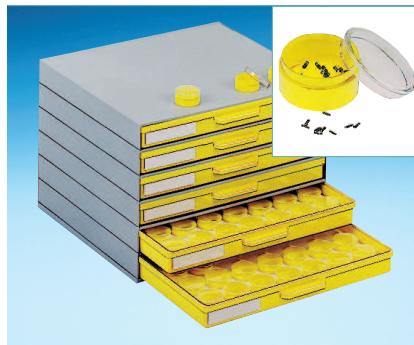
Art. No. **A 1-3 SMD NORMAL**
non conductive



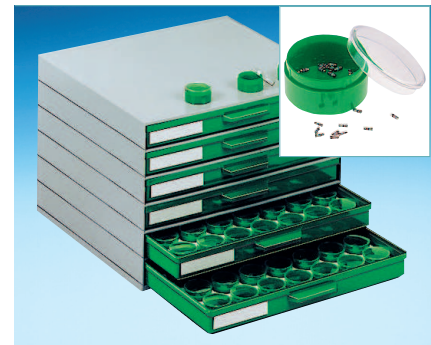
Art. No. SMD cabinet **A 1-1 SMD** Liastat
6-fold cabinets with inserts and
6 x 42 round boxes **V 1-12-6-10**
27 Ø x 13



Art. No. SMD cabinet **A 1-1 SMD white**



Art. No. SMD cabinet **A 1-1 SMD yellow**



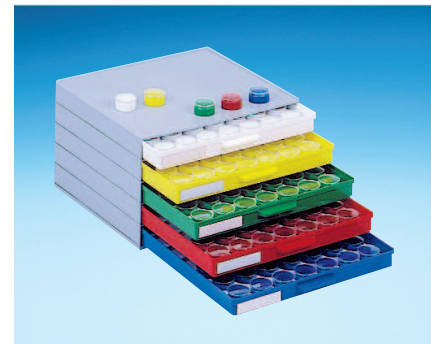
Art. No. SMD cabinet **A 1-1 SMD green**



Art. No. SMD cabinet **A 1-1 SMD red**



Art. No. SMD cabinet **A 1-1 SMD blue**



Art. No. SMD cabinet **A 1-1 SMD/5 bunt**



Art. No. **V 11-3**
SMD packing set with 60 boxes
and foam grid

Art. No. **V 4-1**
6 x 6 x 19
(non conductive)



Art. No. **V 11-1**
SMD packing set with 130 boxes
and foam grid

Art. No. **V 4-1**
6 x 6 x 19
(non conductive)



Art.-No. **MD 12.12.T4 ESD**
Conductive box with dissip. diaphragm foil
Dispatch box for highly sensitive surface
mounted devices (SMD)

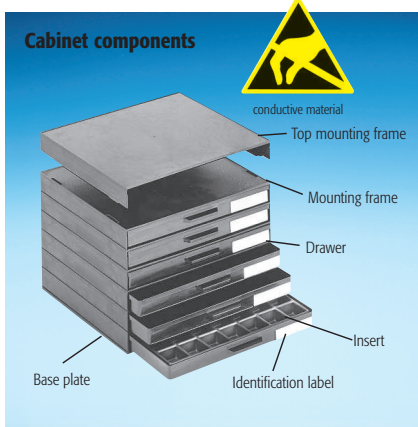
Colour grey glass
Outside dimensions 39 x 39 x 17,8
Inside dimensions 18 x 18 x 9

Dimensions in mm.

Dimensions subject to errors and corrections!

CONDUCTIVE BOXES + SMD-BOXES

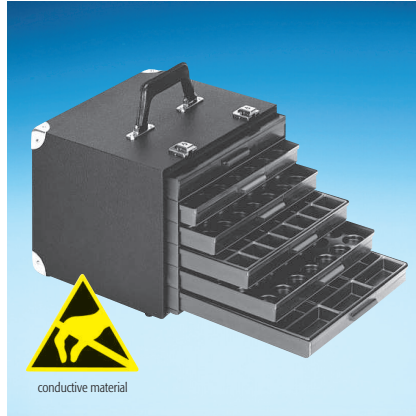
SERIES A 1-1 DRAWER FORMAT



Art. No. **A 1-1 S** 6-fold Liastat

Drawer 261 x 238 x 20 (inside)

Characteristics conductive

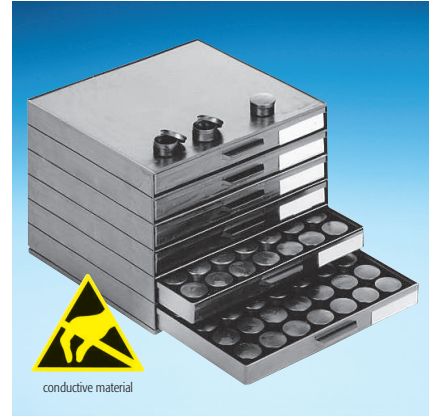


Art. No. **SK 730-6-10**

Drawer 261 x 238 x 20 (inside)

Characteristics conductive

Note Please order inserts and identification labels separately

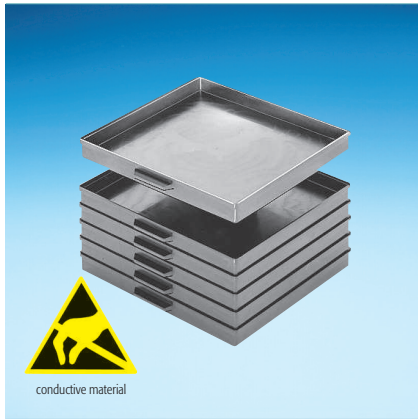


Art. No. **A 1-1 SMD** complete with round boxes

Drawer 261 x 238 x 20 (inside)

Characteristics conductive

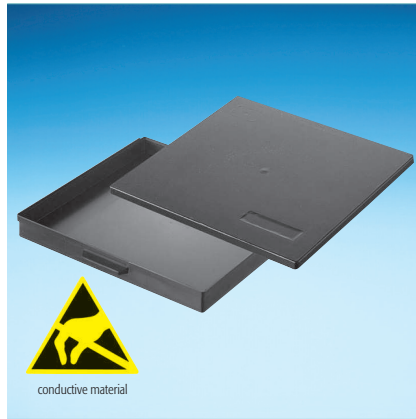
Note Please order identification labels separately, further designs (clear boxes with conducting layer) see page 79



Art. No. **A 1-1/16-6-10** as stackable box

Inside dimensions 261 x 238 x 20

Characteristics conductive



Art. No. **A 1-1/16-6-10** bottom part

Art. No. **+ A 1-1/4-6-10** lid as flat box

Inside dimensions 261 x 238 x 20

Characteristics conductive



Art. No. **A 1-1/16-6-10** bottom part

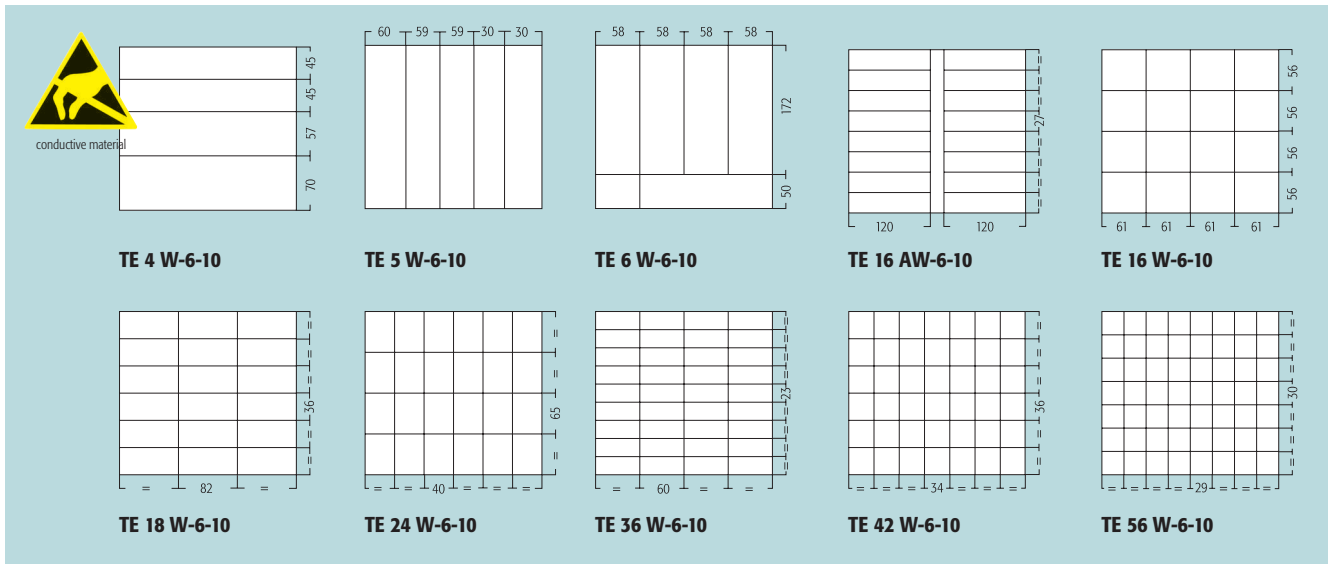
Art. No. **+ A 1-1/4-6-10** lid

Art. No. **+ TE ... W-6-10** insert see below as assortment case

Inside dimensions 261 x 238 x 20

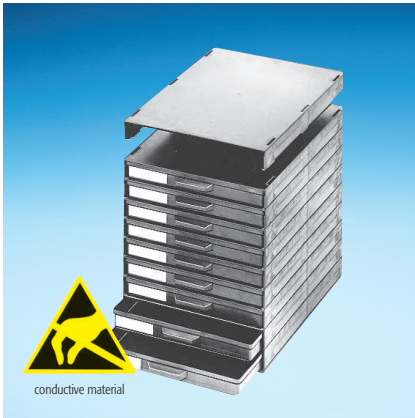
Characteristics conductive

VACUM FORMED STANDARD DRAWER INSERTS Conductive version Liastat *) black, inside dimension of compartments, inside depth 16 mm



CONDUCTIVE BOXES + SMD-BOXES

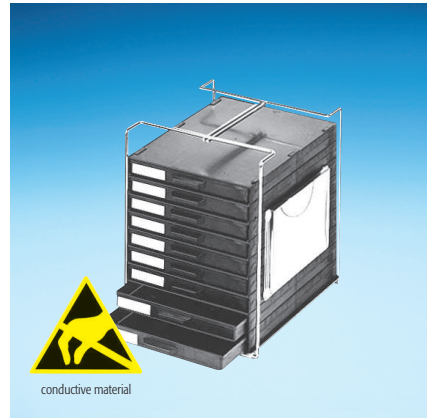
SERIES A 1-1 DRAWER FORMAT



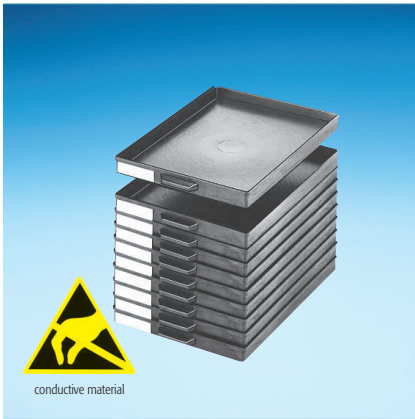
Art. No. **A 1-4** 9-fold Liastat
 Drawer 340 x 250 x 22 (inside)
 Characteristics conductive
 Note Please order inserts and identification labels separately



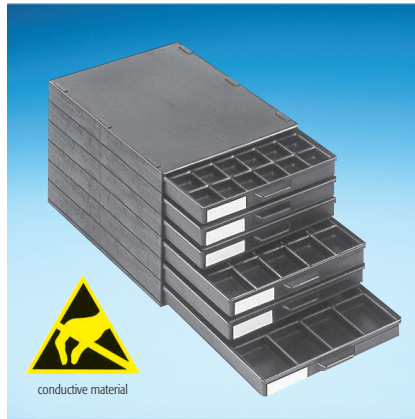
Art. No. **SK 734-6-10**
 Drawer 340 x 250 x 22 (inside)
 Characteristics conductive
 Note Please order inserts and identification labels separately, lateral hinge



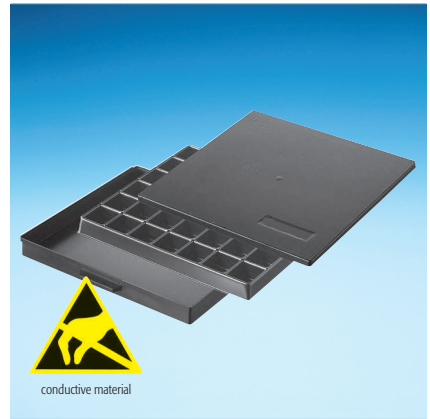
Art. No. **A 1-4 Liacarry**
 Drawer 340 x 250 x 22 (inside)
 Characteristics conductive
 Note Inserts, identification labels and declaration form pockets to be ordered separately, lateral hinge



Art. No. Drawer **A 1-4/16-6-10**
 as stackable box
 Inside dimensions 340 x 250 x 22
 Characteristics conductive

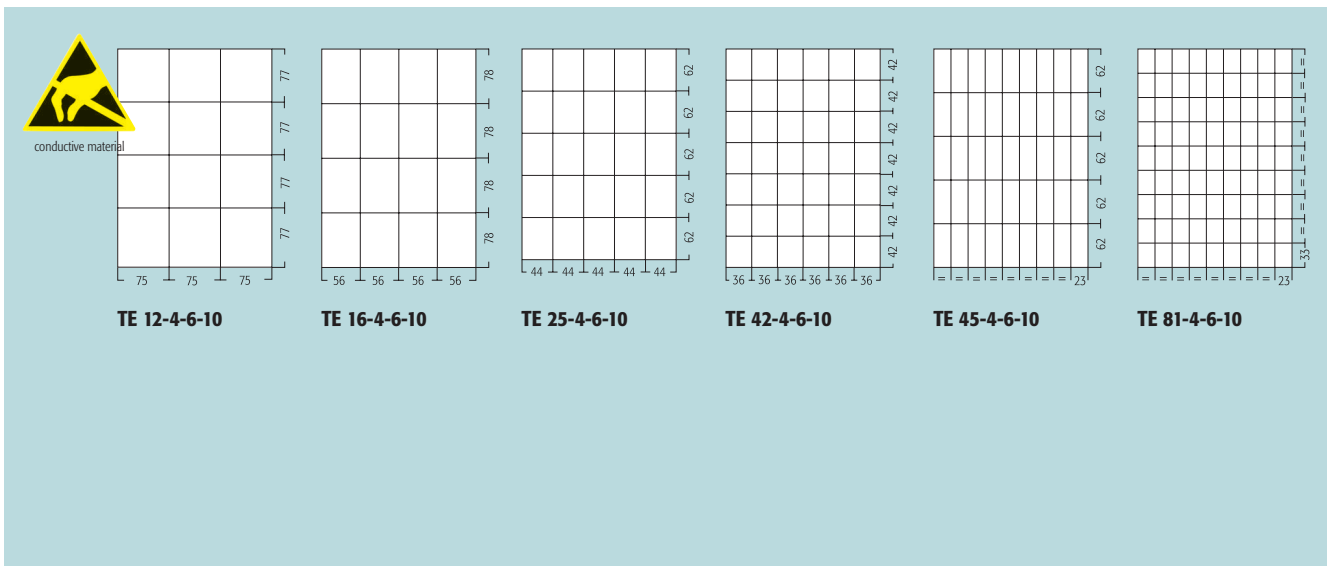


Art. No. **A 1-4/6 ESD insert** spare parts cabinet
 Inside dimensions 340 x 250 x 22
 Characteristics conductive /antistatic
 3 drawers, insert with 42 subdivisions each
 2 drawers, insert with 25 subdivisions each
 1 drawer, insert with 16 subdivisions each



Art. No. **A 1-4/16-6-10** bottom part
 Art. No. + **A 1-2/4-6-10** lid
 Art. No. + **TE ... 4-6-10** insert
 see below as assortment cases
 Inside dimensions 340 x 250 x 22
 Characteristics conductive

VACUM FORMED STANDARD DRAWER INSERTS Inside dimensions of compartments, conductive type Liastat *) black

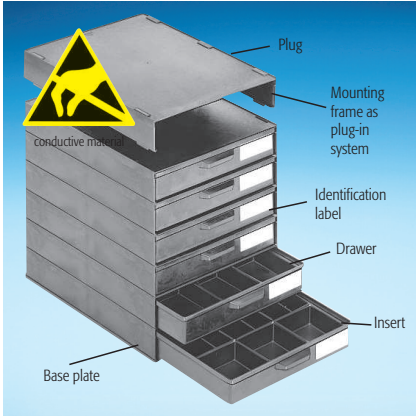


Dimensions in mm.
 Dimensions subject to errors and corrections!

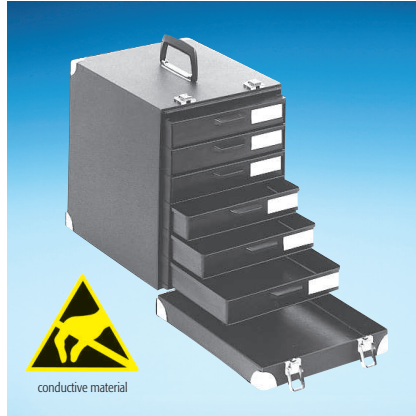
* Material Liastat = conductive/antistatic material, black. Surface resistance according to fabrication criteria 10^3 - 10^8 Ohm.

CONDUCTIVE BOXES + SMD-BOXES

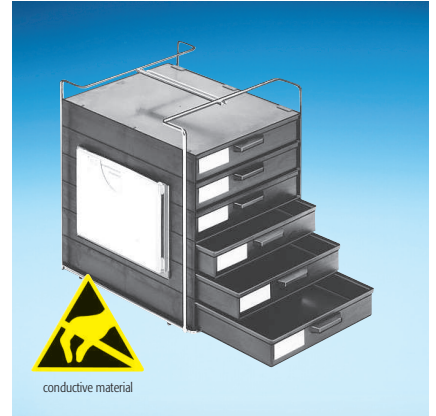
SERIES A 1-2 DRAWER FORMAT



Art. No. **A 1-2 S** 6-fold Liastat
 Drawer 340 x 250 x 40 (inside)
 Characteristics conductive
 Note Please order inserts and identification labels separately



Art. No. **SK 731-6-10**
 Drawer 340 x 250 x 40 (inside)
 Characteristics conductive
 Note Please order inserts and identification labels separately, lateral hinge



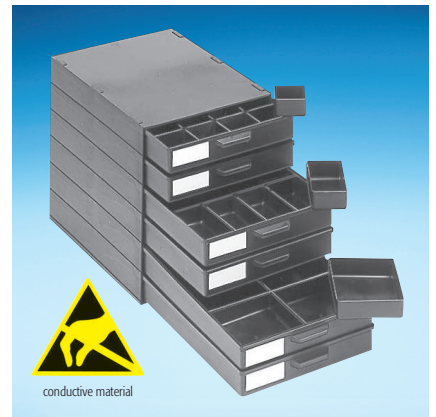
Art. No. **A 1-2 Liacarry**
 Drawer 340 x 250 x 40 (inside)
 Characteristics conductive
 Note Inserts, identification labels and declaration form pockets to be ordered separately, lateral hinge

DETACHABLE DRAWER INSERTS, conductive type Liastat *) black, standard type grey and white

	24	12	6
grey	SE 24-2-2-9	SE 12-2-2-9	SE 6-2-2-9
white	SE 24-2-2-2	SE 12-2-2-2	SE 6-2-2-2
EGB	SE 24-2-6-10	SE 12-2-6-10	SE 6-2-6-10
outside	62 x 56 x 33	112 x 62 x 33	124 x 112 x 33
inside	59 x 53 x 31	109 x 59 x 31	121 x 109 x 31

Special size V 6-28/2 ; 110 x 42 x 35 outside 18 pcs per box		

Drawers **A 1-2/16-6-10** with lid, **A 1-2/4-6-10** as flat box or with inserts as assortment box



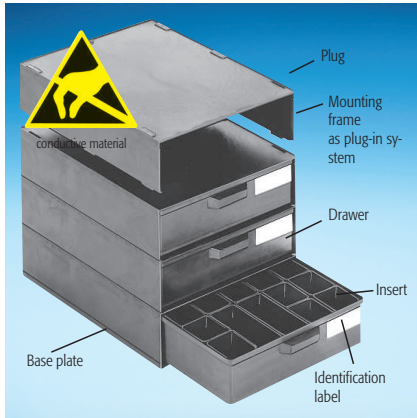
Art. No. **A 1-2/ESD selective cups** Service cabinet
 with 2 drawers with 24, 2 drawers with 12 and 2 drawers with 6 selective cups each
 Inside dimensions 340 x 250 x 40
 Characteristics conductive /antistatic

VACUM FORMED STANDARD DRAWER INSERTS Conductive version Liastat *) black, inside dimension of compartments, inside depth 32 mm

TE 3 S-6-10	TE 6 S-6-10	TE 9 S-6-10	TE 12 S-6-10
TE 16 S-6-10	TE 22 S-6-10 Compartments rounded at the bottom	TE 25 S-6-10	TE 30 S-6-10 Compartments rounded at the bottom

CONDUCTIVE BOXES + SMD-BOXES

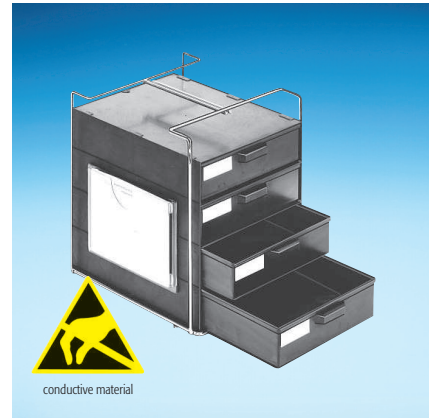
SERIES A 1-60 DRAWER FORMAT



Art. No.	A 1-60 4-fold Liastat
Drawer	340 x 250 x 62 (inside)
Characteristics	conductive
Note	Please order inserts and identification labels separately



Art. No.	SK 732-6-10
Drawer	340 x 250 x 62 (inside)
Characteristics	conductive
Note	Please order inserts and identification labels separately, lateral hinge



Art. No.	A 1-60 Liacarry
Drawer	340 x 250 x 62 (inside)
Characteristics	conductive
Note	Inserts, identification labels and declaration form pockets to be ordered separately, lateral hinge

LOOSE DRAWER INSERTS CONDUCTIVE, standard version, white

	58	30	15	6
white	SE 58-60-1-2	SE 30-60-1-2	SE 15-60-1-2	SE 6-60-1-2
conductive	SE 58-60-6-10	SE 30-60-6-10	SE 15-60-6-10	SE 6-60-6-10
outside	59 x 23 x 60	56 x 50 x 54	113 x 50 x 54	125 x 113 x 54
inside	54 x 18 x 58	53 x 47 x 52	109 x 47 x 52	121 x 109 x 52

VACUM FORMED STANDARD DRAWER INSERTS Conductive version Liastat *) black, inside height 53 mm

	TE 4-60-6-10	TE 6-60-6-10	TE 9-60-6-10	TE 12 K 6-10	TE 24 K 6-10
Dimensions (mm)	116 x 116 x 160	75 x 75 x 160	75 x 75 x 105	71 x 71 x 75	50 x 50 x 47

Dimensions in mm.
Dimensions subject to errors and corrections!

*) Material Liastat = conductive/antistatic material, black. Surface resistance according to fabrication criteria 10³-10⁸ Ohm.

EGB-ROLLBOYS + EGB-DRAWER CABINETS



Art. No. **EGB-Rollboy Single 4**
with 18 drawers
(cf. inside dimensions drawers page 81)
Outside dimensions 318 x 365 x 806
Note Please order inserts separately
conductive pad on request



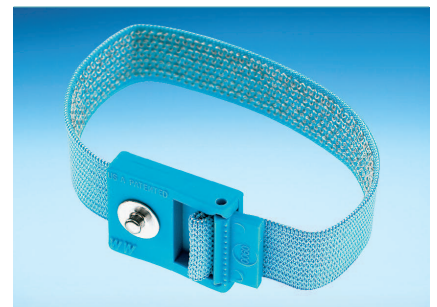
Art. No. **EGB-Rollboy Single 1**
with 12 drawers
(cf. inside dimensions drawers page 82)
Outside dimensions 318 x 365 x 806
Note Please order inserts separately
conductive pad on request



Art. No. **EGB-Rollboy Single 2**
with 8 drawers
(cf. inside dimensions drawers page 83)
Outside dimensions 318 x 365 x 806
Note Please order inserts separately
conductive pad on request



Art. No. **Spiral cable** extremely flexible
2.4 m x 2 x 1 MOhm safety resistance
Earth connection: 10 mm push-button



Art. No. **Wrist band** adjustable, flexible,
interlaced, silver-plated synthetic fabrics,
antiallergenic



Art. No. **EGB-Rollboy 4** with 36 drawers
with pad 585 x 365
(cf. inside dimensions drawers page 81)
Outside dimensions 585 x 365 x 806
Note Please order inserts separately

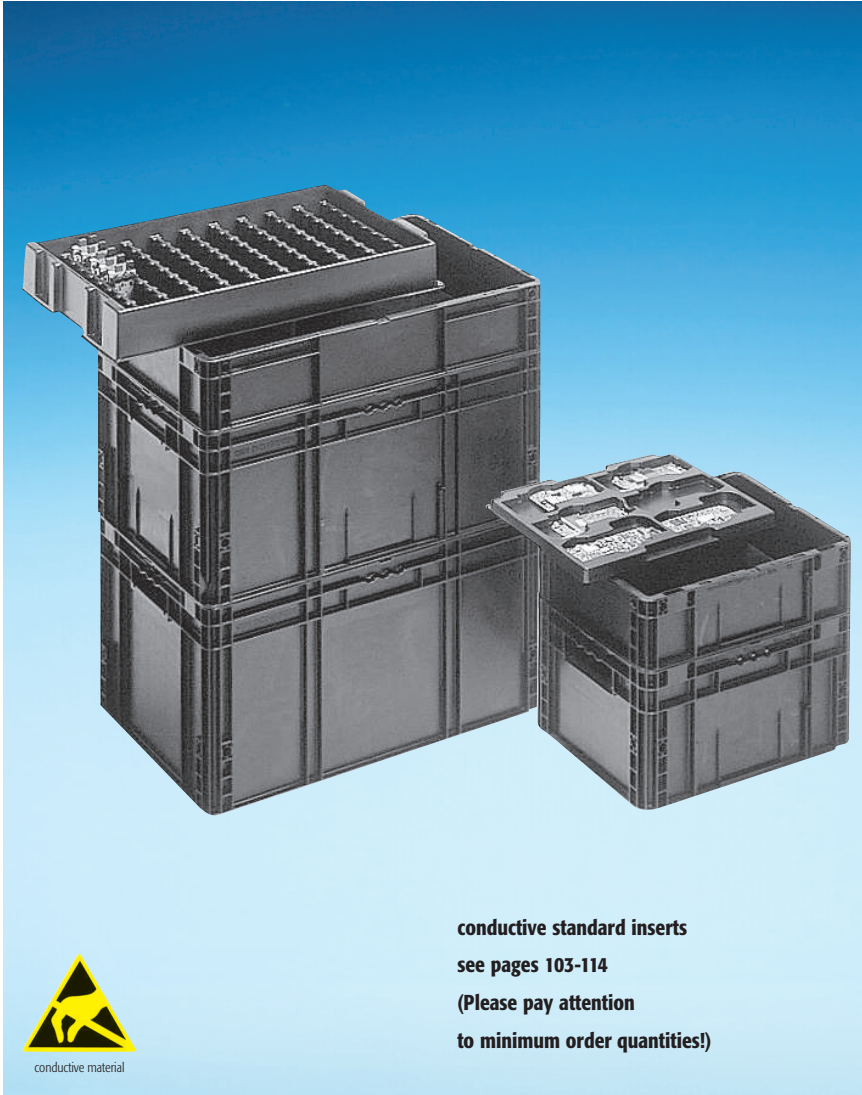


Art. No. **EGB-Rollboy 1** with 24 drawers
with pad 585 x 365
(cf. inside dimensions drawers page 82)
Outside dimensions 585 x 365 x 806
Note Please order inserts separately



Art. No. **EGB-Rollboy 2** with 16 drawers
with pad 585 x 365
(cf. inside dimensions drawers page 83)
Outside dimensions 585 x 365 x 806
Note Please order inserts separately

CONDUCTIVE BOXES + SUBDIVISIONS



conductive standard inserts
see pages 103-114
(Please pay attention
to minimum order quantities!)



NEW

Vacuum-formed standard inserts
made of dissipative material



(on request)

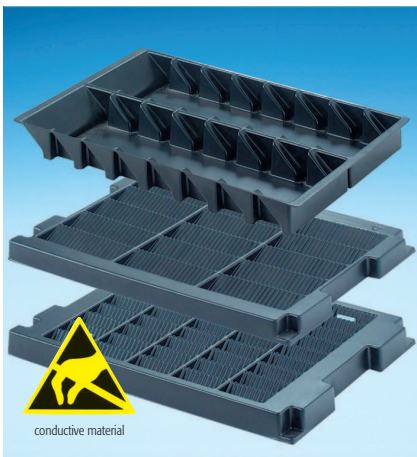
Colours ●



Art. No. **ET-1-6-10** Insert tray for Euro boxes
EK 1-2/LWB (400 x 300) stackable,

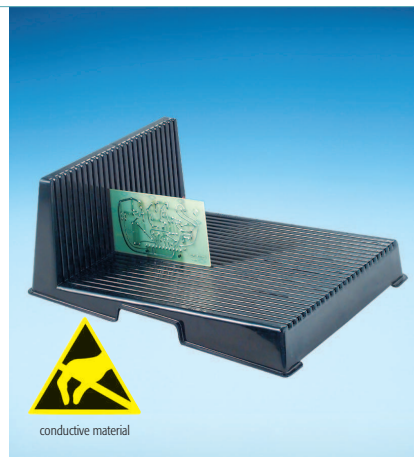
Inside dimensions 310 x 250 x 20

Art. No.	EK 1-6-10	EK 2-6-10	D 1-2-6-10	EK 3-6-10	EK 4-6-10	D 3-4-6-10
Outside dimensions	400 x 300 x 120	400 x 300 x 220	Top cover	600 x 400 x 120	600 x 400 x 270	Top cover



Trays for small printed boards

Art. No.	TL 1 for 16 printed boards 105 x 50
Dimensions	350 x 225 x 30
Art. No.	TL 2 for 15 printed boards 100 x 40
Dimensions	350 x 250 x 30
Art. No.	TL 3 for 45 printed boards 50 x 30
Dimensions	350 x 250 x 23



Printed boards L-profile

Art. No.	LP 1
Dimensions	200 x 274 x 93
Art. No.	LP 2
Dimensions	350 x 263 x 125
	25 slots for printed boards
	Transport/storage Service workshop



Art. No. **ET-3-6-10**
Insert tray for Euro boxes
EK 3-4/LWB stackable,

Inside dimensions 520 x 345 x 60

Dimensions in mm.

Dimensions subject to errors and corrections!

CONDUCTIVE BOXES + SMD-BOXES

CONDUCTIVE PACKING BOXES WITH SNAP LOCK AND HINGE OR WITH SLIP LID



Art. No.	V20-200 ESD	V20-201 ESD	V20-202 ESD	V20-203 ESD	V20-204 ESD	V20-205 ESD
Inside dimensions	34 x 34 x 8	58 x 42 x 10	68 x 50 x 13	95 x 70 x 17	115 x 85 x 26	138 x 102 x 30



Art. No.	V 3-12-6-6-10-10	V 3-18-6-6-10-10	V 3-30-6-6-10-10	V 3-40-6-6-10-10
Inside dimensions	50 x 30 x 16	57 x 36 x 17	73 x 42 x 17	80 x 50 x 27



Art. No.	V 1-11-6-6-10-10 26 Ø x 17,5 slip lid	Art. No.	V 6-4-6-6-10-10	Art. No.	V 3-10-6-6-10-10	V 3-37-6-6-10-10
Art. No.	V 1-12-6-6-10 26 Ø x 13 slip lid		6 comp. je 19 x 15 x 5 inside		49,5 x 39,5 x 5	75 x 75 x 27
Art. No.	V 2-101-6-6-10-10 52 Ø x 40 screw cap	Art. No.	V 6-5-6-6-10-10	Art. No.	V 3-53-6-6-10-10	V 3-54-6-6-10-10
Art. No.	V 2-102-6-6-10-10 52 Ø x 67 screw cap		12 comp. je 25 x 10 x 10 inside		102 x 25 x 10	102 x 85 x 47



Art. No.	V 3-16-6-6-10-10 55 x 55 x 25/16 inside
Art. No.	V 3-17-6-6-10-10 55 x 55 x 35/26 inside
Art. No.	V 3-59-6-6-10-10 115 x 55 x 35/26 inside
Art. No.	V 3-60-6-6-10-10 115 x 55 x 55/46 inside
Art. No.	V 3-61-6-6-10-10 115 x 115 x 55/46 inside



ESD foam inlays on request

Art. No.	V 8-1-6-6-10-10	75 x 50 x 33 inside
Art. No.	V 8-2-6-6-10-10	75 x 50 x 45 inside
Art. No.	V 8-5-6-6-10-10	106 x 75 x 46 inside
Art. No.	V 8-7-6-6-10-10	156 x 106 x 46 inside



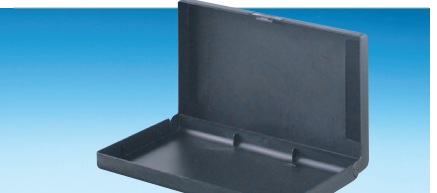
Art. No.	V 20-29-6-10	130 x 80 x 14 inside
Art. No.	V 20-30-6-10	130 x 80 x 30 inside
Art. No.	V 20-31-6-10	130 x 80 x 50 inside
Art. No.	V 20-32-6-10	178 x 133 x 78 inside
Art. No.	V 20-33-6-10	221 x 121 x 55 inside



Art. No.	V 8-8-6-6-10-10
Inside dimensions	183 x 108 x 30



Art. No.	V 8-9 SCH + V-6-6-10-10
Inside dimensions	196 x 136 x 49 (Outside dimensions 203 x 152 x 53)



Art. No.	V 8-15-6-6-10-10
Inside dimensions	220 x 130 x 35



Art. No.	V 8-14 SCH + V-6-6-10-10
Outside dimensions	295 x 175 x 20
Inside dimensions	292 x 160 x 16



Art. No.	V 9-40 SCH + V-6-6-10-10
Outside dimensions	295 x 175 x 20
Inside dimensions	73 x 42 x 17



Art. No.	V 8-12 SCH + V-6-6-10-10
Outside dimensions	295 x 175 x 42
Inside dimensions	288 x 157 x 38

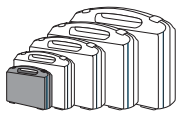
CONDUCTIVE BOXES + SMD-BOXES

CONDUCTIVE SUITCASES AND INSERTS



Art.-No.	K 2005 ESD	K 2001 ESD	K 2004 ESD	K 2000 ESD	K 2011 ESD
Inside dimensions	170 x 130 x 37	240 x 170 x 42	270 x 185 x 76	340 x 250 x 53	375 x 265 x 80

VACUUM FORMED INSERTS Please specify art. no. separately!



Inside dimensions
170 x 130 x 37



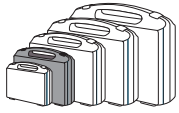
K2005 ESD Noppe



TE 6 K 5-6-10



TE 9 K 5-6-10



Inside dimensions
240 x 170 x 42



K2001 ESD Raster



K2001 ESD Noppe



K2001 ESD Steckschaum



TE 6 K 1-6-10



TE 9 K 1-6-10



TE 12 K 1-6-10



Inside dimensions
270 x 185 x 76



K2004 ESD Raster



K2004 ESD Noppe



TE 6 K 4-6-10



TE 9 K 4-6-10



Inside dimensions
340 x 250 x 53



K2000 ESD Raster



K2000 ESD Noppe



TE 6 K 6-10



TE 9 K 6-10



TE 12 K 6-10



TE 24 K 6-10



Inside dimensions
375 x 265 x 80



K2011 ESD Raster



K2011 ESD Noppe



TE 6 K11-6-10



TE 9 K11-6-10



TE 12 K11-6-10

NEW

CONDUCTIVE BOXES + SMD-BOXES

CONDUCTIVE BOXES (new organization system for EGB laboratories)

ALU RAILS (diverting)
AS 50 ESD
AS 100 ESD

A4-18 PLATTE1-6-10
A4-16 PLATTE1-6-10

MAGNETIC PINS
R 30 ESD **R 40 ESD**
Q 40 ESD **D 40 ESD**

CLIP
DC1 ESD

HOOKS

conductive material

Art. No.	A 4-18-6-10	A 4-16-6-10
Outside dimensions	160 x 210 x 82	240 x 210 x 82
Inside dimensions	126 x 178 x 79	208 x 178 x 79
Colours	●	●

CONDUCTIVE BOXES + SUBDIVISIONS

conductive material

Art. No.	A 4-1-6-10
Base area	175 x 100
Top edge	250 x 125
Height inside	34 mm
Colours	●

conductive material

Art. No.	A 4-2-6-10
Base area	190 x 120
Height inside	50 mm
Colours	●

conductive material

Art. No.	A 4-3-6-10
Base area	210 x 150
Top edge	260 x 200
Height inside	40 mm
Colours	●

conductive material

Art. No. (a)	A 4-4 N-6-10
Art. No. (b)	A 4-70-6-10
Outside dimensions	260 x 165
Height outside (a)	45
Height outside (b)	70
Colours	●

PORTABLE RACK, CHROME-PLATED FOR 8 OR 10 TRAYS

NEW

Art. No.	A 4-4 ESD TRAY	A 4-70 ESD TRAY
Outside dimensions	610 x 190 x 252	610 x 190 x 252
Note	Portable rack, chrome-plated for 10 trays A 4-4 N-6-10	Portable rack, chrome-plated for 8 trays A 4-70-6-10

X-ON Electronics

Largest Supplier of Electrical and Electronic Components

Click to view similar products for [liceфа](#) manufacturer:

Other Similar products are found below :

[K 2007 ESD](#) [A1-4 ESD 144](#) [K 2005 ESD 440/320/20](#) [A1-1 SMD/5 BUNT](#) [K 2005 ESD NOPPE](#) [A1-4/4 ESD MIX](#) [V11-4](#) [SMD-BOX N2-2-2-8-8](#) [V11-5](#) [SMD-BOX N4-6-6-10-1 LS](#) [A1-4 ESD 16](#) [K2004 ESD NOPPE](#) [SMD-BOX N3-6-6-10-10](#) [SMD-BOX N1-2-2-4-4](#) [SMD-BOX N1-2-2-8-8](#) [K2001-9-9-2-2-\(10\)/P](#) [SMD-BOX N4-6-6-10-10](#) [A1-2/6BUNT](#) [SMD-BOX N2-2-2-7-7](#) [SMD-BOX N3-2-3-7-1](#) [V11-3](#) [V3-18/9-6-10](#) [SMD-BOX N2-2-3-6-1](#) [SMD-BOX N4-2-3-4-1](#) [SMD-BOX N1-2-3-8-1](#) [K 2001 ESD](#) [SMD-BOX N1-2-3-7-1](#) [K 2001](#) [K 2004 ESD](#) [V5-124](#) [V5-96](#) [A4-3-6-10](#) [V3-12/9-6-10](#) [V20-18](#) [SMD-BOX N3-2-3-6-1](#) [SMD-BOX N 2-2-3-4-1](#) [V20-10](#) [A4-1-6-10](#) [V5-20](#) [V20-7](#)