

## SMD Wire Wound Common Mode Filters---SCM Series



### Feature

- Compact Size
- High impedance but very high rated current and low RDC.
- Wide impedance range for EMI suppression
- RoHS compliant.
- Operating temperature range  $-40^{\circ}\text{C} \sim 125^{\circ}\text{C}$ .

### Application

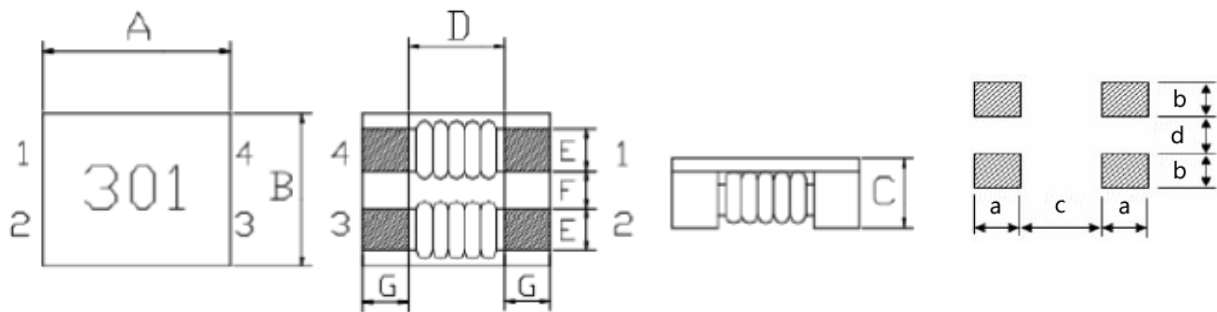
- EMI suppression for Power lines.
- Communications, Computers, Noise suppression, etc.
- CAN BUS.

### Production identification

$\frac{\text{SCM}}{\text{①}}$      $\frac{7060}{\text{②}}$     -     $\frac{701}{\text{③}}$      $\frac{\text{T}}{\text{④}}$

- ① Series name: SMD Common Mode Choke
- ② Size:  $7.0 \times 6.0 \times 3.8\text{mm}$
- ③ Impedance:  $700\Omega$
- ④ Taping Code

### Series Shape and Dimensions (Unit:mm)



Series	A	B	C <sub>Max</sub>	D <sub>Typ</sub>	E <sub>Typ</sub>	F <sub>Typ</sub>	G <sub>Typ</sub>	a	b	c	d	SPQ
SCM7060	$7.0 \pm 0.5$	$6.0 \pm 0.5$	3.8	3.5	1.5	1.5	1.75	2.2	1.5	2.5	1.5	1500
SCM9070	$9.0 \pm 0.5$	$7.0 \pm 0.5$	4.8	5.7	1.5	2.0	1.70	3.0	1.75	5.0	1.5	1500
SCM1211	$12.0 \pm 0.5$	$10.8 \pm 0.5$	6.4	7.0	2.7	2.5	2.5	2.7	2.9	6.8	2.3	1000

### Electrical Characteristics

Part Number	Impedance@100 MHz( $\Omega$ )		Rated Voltage Max(Vdc)	Insulation Resistance Min(M $\Omega$ )	DC Resistance Max(m $\Omega$ )	Rated Current Max(A)
	Min	Typ				
SCM7060-301T	225	300	80	10	10.0	5.0
SCM7060-701T	500	700	80	10	15.0	4.0
SCM7060-102T	800	1020	80	10	17.0	3.0
SCM7060-132T	910	1300	80	10	21.0	2.5

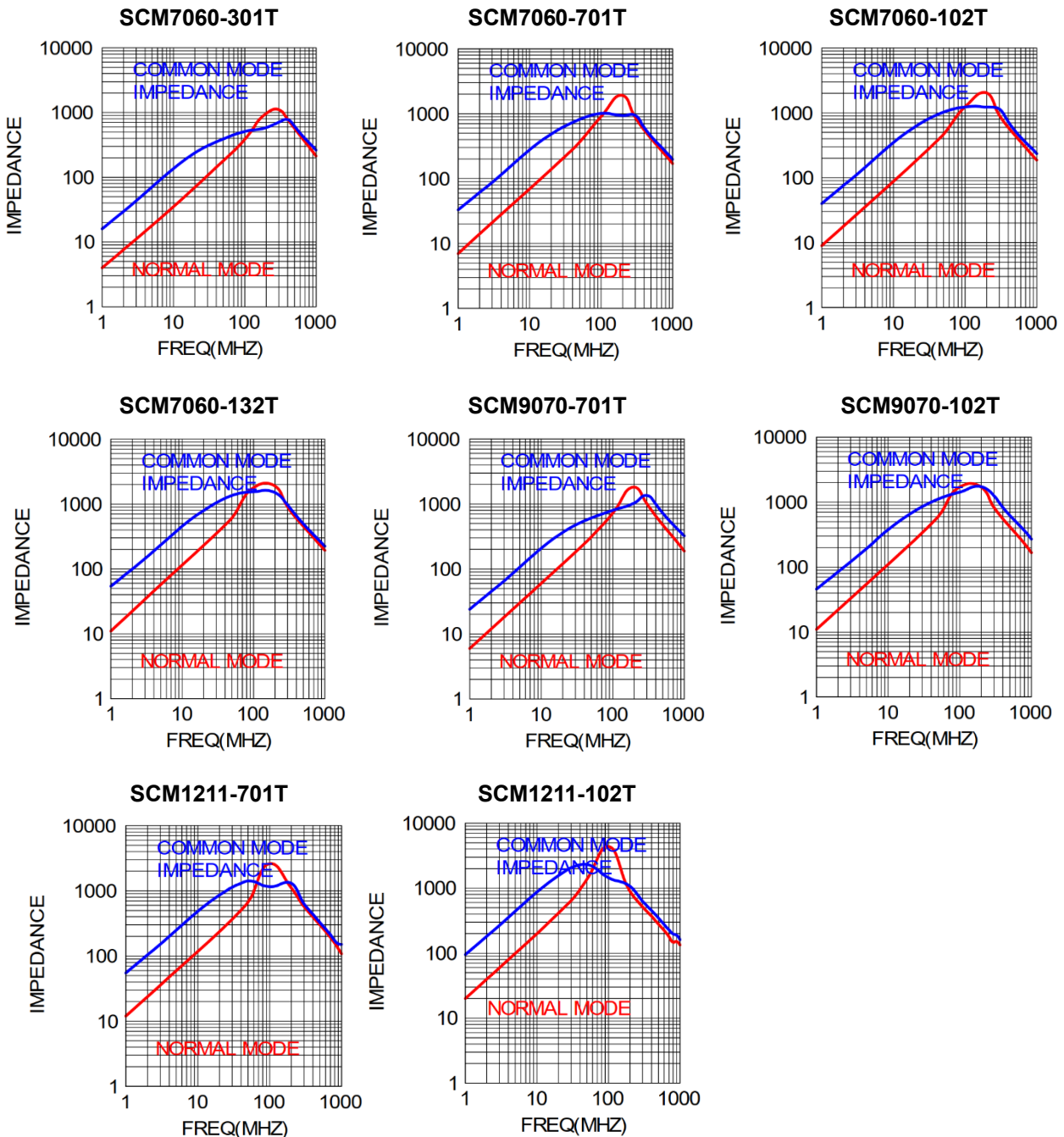
# SMD Wire Wound Common Mode Filters---SCM Series



## Electrical Characteristics

Part Number	Impedance@100 MHz( $\Omega$ )		Rated Voltage Max(Vdc)	Insulation Resistance Min(M $\Omega$ )	DC Resistance Max(m $\Omega$ )	Rated Current Max(A)
	Min	Typ				
SCM9070-701T	500	700	50	10	10.0	5.0
SCM9070-102T	750	1000	50	10	13.0	4.0
SCM1211-701T	500	700	125	10	6.0	8.0
SCM1211-102T	750	1000	125	10	14.0	6.0

## Typical Impedance vs. Frequency Curves



## X-ON Electronics

Largest Supplier of Electrical and Electronic Components

*Click to view similar products for [Common Mode Chokes / Filters](#) category:*

*Click to view products by [Linekey manufacturer](#):*

Other Similar products are found below :

[74279408](#) [PE-62911NL](#) [PE-64683](#) [RD5122-6-9M6](#) [RGCMF1210900H3T](#) [ST6118T-R](#) [FE3X025-10-7NL](#) [T8114NLT](#) [RD5122-10-6M0](#)  
[TCM0806G-350-2P-T](#) [TCM0806G-650-2P-T](#) [IND-0110](#) [UALSC023000000](#) [UALSC1020JH000](#) [UALSC1520JH000](#) [UALSU10VR15019](#)  
[UALSU9VD070100](#) [36-00037](#) [5701610000](#) [UALW21HS200290](#) [UALW21HS072450](#) [UALSU9HF050500](#) [UALSU9H0208000](#)  
[UAL24VK06450CH](#) [PLT10HH501100PNB](#) [PLT10HH401100PNB](#) [PLT10HH1026R0PNB](#) [PE-67531](#) [TLH10UB](#) [113 OR5](#) [2752045447](#)  
[CMS3-11-R](#) [7351V](#) [7408-RC](#) [CMF16-153131](#) [744252510](#) [T8116NLT](#) [CMS2-10-R](#) [DLW44SN101SK2L](#) [FE2X10-4-2NL](#) [744253200](#)  
[744253101](#) [744252220](#) [TX8111NLT](#) [UAL30VR3500470](#) [CTX01-19077-R](#) [T8003NLT](#) [CTX01-13663](#) [CTX66-19521-R](#) [7446630047](#) [744136](#)