



# CD4015 (LX)

## Dual 4-bit Static Shift Register

### Product Specification

**Specification Revision History:**

Version	Date	Description
2023-05-A1	2023-05	New



灵星芯微 芯片经营

# Contents

<b>1、 General Description.....</b>	<b>3</b>
<b>2、 Block Diagram And Pin Description .....</b>	<b>4</b>
2.1、 Block Diagram .....	4
2.2、 Pin Configurations.....	4
2.3、 Pin Description .....	5
2.4、 Function Table.....	5
<b>3、 Electrical Parameter .....</b>	<b>5</b>
3.1、 Absolute Maximum Ratings.....	5
3.2、 Recommended Operating Conditions .....	6
3.3、 Electrical Characteristics .....	6
3.3.1、 DC Characteristics 1 .....	6
3.3.2、 DC Characteristics 2 .....	7
3.3.3、 AC Characteristics 1 .....	7
3.3.4、 AC Characteristics 2 .....	8
<b>4、 Testing Circuit .....</b>	<b>9</b>
4.1、 AC Testing Circuit .....	9
4.2、 Test Data .....	9
4.3、 AC Testing Waveforms.....	9
4.4、 Measurement Points .....	10
<b>5、 Package Information .....</b>	<b>11</b>
5.1、 DIP16 .....	11
5.2、 SOP16 .....	12
5.3、 TSSOP16.....	13
<b>6、 Statements And Notes .....</b>	<b>14</b>
6.1、 The name and content of Hazardous substances or Elements in the product .....	14



## 1、General Description

The CD4015 is a dual edge-triggered 4-bit static shift register (serial-to-parallel converter).

### Features:

- Supply voltage range: 3V to 15V
- Temperature range: -40°C to +125°C
- Packaging information: DIP16/SOP16/TSSOP16

### Ordering Information:

#### Tube packing specifications:

Part number	Packaging form	Marking code	Tube quantity	Boxed tube quantity	Boxed quantity	Notes
CD4015BE(LX)	DIP16	CD4015BE	25 PCS/tube	40 tube/box	1000 PCS/box	Dimensions of plastic enclosure: 19.0mm×6.4mm Pin spacing: 2.54mm
CD4015BM(LX)	SOP16	CD4015BM	50 PCS/tube	200 tube/box	10000 PCS/box	Dimensions of plastic enclosure: 10.0mm×3.9mm Pin spacing: 1.27mm
CD4015BPWR(LX)	TSSOP16	CD4015BPWR	96 PCS/tube	200 tube/box	19200 PCS/box	Dimensions of plastic enclosure: 5.0mm×4.4mm Pin spacing: 0.65mm

#### Reel packing specifications:

Part number	Packaging form	Marking code	Reel quantity	Boxed reel quantity	Notes
CD4015BM(LX)	SOP16	CD4015BM	4000 PCS/reel	8000 PCS/box	Dimensions of plastic enclosure: 10.0mm×3.9mm Pin spacing: 1.27mm
CD4015BPWR(LX)	TSSOP16	CD4015BPWR	5000 PCS/reel	10000 PCS/box	Dimensions of plastic enclosure: 5.0mm×4.4mm Pin spacing: 0.65mm

Note: If the physical information is inconsistent with the ordering information, please refer to the actual product.



## 2、Block Diagram And Pin Description

### 2.1、Block Diagram

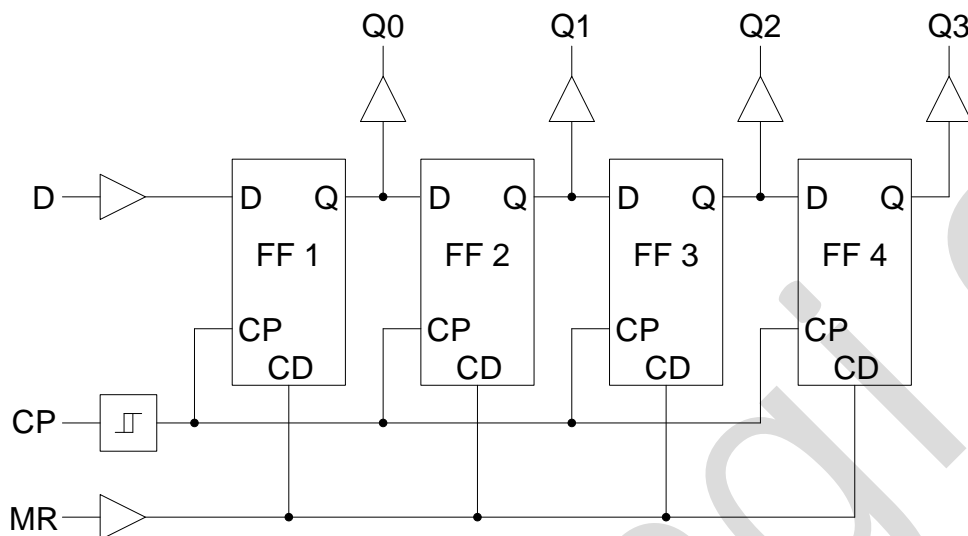
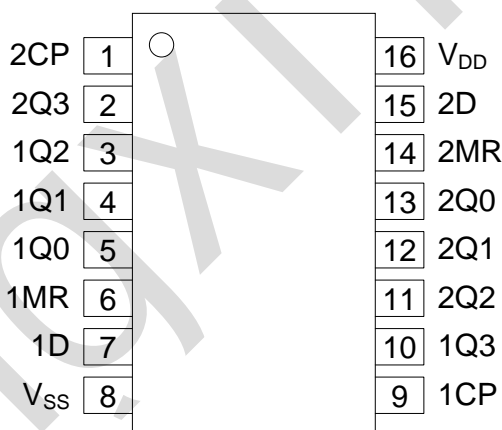


Figure 1. Functional diagram

### 2.2、Pin Configurations





### 2.3、Pin Description

Pin No.	Pin Name	Description
1	2CP	clock input (LOW-to-HIGH edge-triggered)
2	2Q3	parallel output
3	1Q2	parallel output
4	1Q1	parallel output
5	1Q0	parallel output
6	1MR	master reset input(active high)
7	1D	serial data input
8	V <sub>SS</sub>	ground (0V)
9	1CP	clock input (LOW-to-HIGH edge-triggered)
10	1Q3	parallel output
11	2Q2	parallel output
12	2Q1	parallel output
13	2Q0	parallel output
14	2MR	master reset input(active high)
15	2D	serial data input
16	V <sub>DD</sub>	supply voltage

### 2.4、Function Table

Input			Output			
CP	D	MR	Q0	Q1	Q2	Q3
↑	D1	L	D1	X	X	X
↑	D2	L	D2	D1	X	X
↑	D3	L	D3	D2	D1	X
↑	D4	L	D4	D3	D2	D1
↓	X	L	No change	No change	No change	No change
X	X	H	L	L	L	L

Note:

H=HIGH voltage level; L=LOW voltage level; X=don't care; Dn=either HIGH or LOW;  
↑=positive-going transition; ↓=negative-going transition..

## 3、Electrical Parameter

### 3.1、Absolute Maximum Ratings

(Voltages are referenced to V<sub>SS</sub> (ground=0V), unless otherwise specified.)

Parameter	Symbol	Conditions	Min.	Max.	Unit
supply voltage	V <sub>DD</sub>	-	-0.5	+18	V
input voltage	V <sub>I</sub>	all inputs	-0.5	V <sub>DD</sub> +0.5	V
DC input current	I <sub>IK</sub>	any one input	-	±10	mA
storage temperature	T <sub>stg</sub>	-	-65	+150	°C
soldering temperature	T <sub>L</sub>	10s	DIP	245	°C
			SOP/TSSOP	260	



### 3.2、Recommended Operating Conditions

Parameter	Symbol	Conditions	Min.	Typ.	Max.	Unit
supply voltage	$V_{DD}$	-	3	-	15	V
ambient temperature	$T_{amb}$	in free air	-40	-	+125	°C

### 3.3、Electrical Characteristics

#### 3.3.1、DC Characteristics 1

( $T_{amb}=-40^{\circ}\text{C}$  to  $+85^{\circ}\text{C}$ , voltages are referenced to  $V_{SS}$  (ground=0V), unless otherwise specified.)

Parameter	Symbol	$V_{DD}$	Conditions	Min.	Typ.	Max.	Unit
HIGH-level input voltage	$V_{IH}$	5V	-	3.5	-	-	V
		10V	-	7	-	-	V
		15V	-	11	-	-	V
LOW-level input voltage	$V_{IL}$	5V	-	-	-	1.5	V
		10V	-	-	-	3	V
		15V	-	-	-	4	V
HIGH-level output voltage	$V_{OH}$	5V	$ I_O  < 1\mu\text{A}$	4.95	-	-	V
		10V	$ I_O  < 1\mu\text{A}$	9.95	-	-	V
		15V	$ I_O  < 1\mu\text{A}$	14.95	-	-	V
LOW-level output voltage	$V_{OL}$	5V	$ I_O  < 1\mu\text{A}$	-	-	0.05	V
		10V	$ I_O  < 1\mu\text{A}$	-	-	0.05	V
		15V	$ I_O  < 1\mu\text{A}$	-	-	0.05	V
HIGH-level output current	$I_{OH}$	5V	$V_O=4.6\text{V}$	-	-	-0.34	mA
		5V	$V_O=2.5\text{V}$	-	-	-1.3	mA
		10V	$V_O=9.5\text{V}$	-	-	-0.55	mA
		15V	$V_O=13.5\text{V}$	-	-	-1.65	mA
LOW-level output current	$I_{OL}$	5V	$V_O=0.4\text{V}$	0.34	-	-	mA
		10V	$V_O=0.5\text{V}$	0.46	-	-	mA
		15V	$V_O=1.5\text{V}$	1.4	-	-	mA
input leakage current	$I_I$	15V	$V_I=15\text{V}$ or GND	-	-	$\pm 1$	$\mu\text{A}$
supply current	$I_{DD}$	5V	$V_I=5\text{V}$ or GND; $I_O=0\text{A}$	-	-	150	$\mu\text{A}$
		10V	$V_I=10\text{V}$ or GND; $I_O=0\text{A}$	-	-	300	$\mu\text{A}$
		15V	$V_I=15\text{V}$ or GND; $I_O=0\text{A}$	-	-	600	$\mu\text{A}$



### 3.3.2、DC Characteristics 2

( $T_{amb}=-40^{\circ}\text{C}$  to  $+125^{\circ}\text{C}$ , voltages are referenced to  $V_{SS}$  (ground=0V), unless otherwise specified.)

Parameter	Symbol	$V_{DD}$	Conditions	Min.	Typ.	Max.	Unit
HIGH-level input voltage	$V_{IH}$	5V	-	3.5	-	-	V
		10V	-	7	-	-	V
		15V	-	11	-	-	V
LOW-level input voltage	$V_{IL}$	5V	-	-	-	1.5	V
		10V	-	-	-	3	V
		15V	-	-	-	4	V
HIGH-level output voltage	$V_{OH}$	5V	$ I_O <1\mu\text{A}$	4.95	-	-	V
		10V	$ I_O <1\mu\text{A}$	9.95	-	-	V
		15V	$ I_O <1\mu\text{A}$	14.95	-	-	V
LOW-level output voltage	$V_{OL}$	5V	$ I_O <1\mu\text{A}$	-	-	0.05	V
		10V	$ I_O <1\mu\text{A}$	-	-	0.05	V
		15V	$ I_O <1\mu\text{A}$	-	-	0.05	V
HIGH-level output current	$I_{OH}$	5V	$V_O=4.6\text{V}$	-	-	-0.3	mA
		5V	$V_O=2.5\text{V}$	-	-	-1.15	mA
		10V	$V_O=9.5\text{V}$	-	-	-0.45	mA
		15V	$V_O=13.5\text{V}$	-	-	-1.4	mA
LOW-level output current	$I_{OL}$	5V	$V_O=0.4\text{V}$	0.29	-	-	mA
		10V	$V_O=0.5\text{V}$	0.38	-	-	mA
		15V	$V_O=1.5\text{V}$	1.2	-	-	mA
input leakage current	$I_I$	15V	$V_I=15\text{V}$ or GND	-	-	$\pm 1$	$\mu\text{A}$
supply current	$I_{DD}$	5V	$V_I=5\text{V}$ or GND; $I_O=0\text{A}$	-	-	150	$\mu\text{A}$
		10V	$V_I=10\text{V}$ or GND; $I_O=0\text{A}$	-	-	300	$\mu\text{A}$
		15V	$V_I=15\text{V}$ or GND; $I_O=0\text{A}$	-	-	600	$\mu\text{A}$

### 3.3.3、AC Characteristics 1

( $T_{amb}=-40^{\circ}\text{C}$  to  $+85^{\circ}\text{C}$ ,  $V_{SS}=0\text{V}$ , unless otherwise specified.)

Parameter	Symbol	$V_{DD}$	Conditions	Min.	Typ.	Max.	Unit
nCP to Qn propagation delay time	$t_{PHL}, t_{PLH}$	5V	$C_L=50\text{pF}$ , see Figure 3	-	125	250	ns
		10V		-	55	110	ns
		15V		-	40	80	ns
MR to Qn HIGH to LOW propagation delay	$t_{PHL}$	5V	$C_L=50\text{pF}$ , see Figure 4	-	120	240	ns
		10V		-	55	110	ns
		15V		-	40	80	ns
transition time	$t_{THL}, t_{TLH}$	5V	$C_L=50\text{pF}$ , see Figure 3	-	60	120	ns
		10V		-	30	60	ns
		15V		-	20	40	ns
nD to nCP set-up time	$t_{su}$	5V	$C_L=50\text{pF}$ , see Figure 5	+25	-15	-	ns
		10V		+25	-10	-	ns
		15V		+20	-5	-	ns
nD to nCP hold time	$t_h$	5V	$C_L=50\text{pF}$ , see Figure 5	40	20	-	ns
		10V		20	10	-	ns



		15V		15	8	-	ns
CP LOW; Minimum width Pulse width	tw	5V	$C_L=50\text{pF}$ , see Figure 5	60	30	-	ns
		10V		30	15	-	ns
		15V		20	10	-	ns
nMR HIGH; minimum width;	tw	5V	$C_L=50\text{pF}$ , see Figure 4	80	40	-	ns
		10V		30	15	-	ns
		15V		24	12	-	ns
recovery time	trec	5V	$C_L=50\text{pF}$ , see Figure 4	50	20	-	ns
		10V		30	10	-	ns
		15V		20	5	-	ns
Maximum frequency	fmax	5V	$C_L=50\text{pF}$ , see Figure 5	7	15	-	MHZ
		10V		15	30	-	MHZ
		15V		22	44	-	MHZ

### 3.3.4、AC Characteristics 2

( $T_{\text{amb}}=-40^{\circ}\text{C}$  to  $+125^{\circ}\text{C}$ ,  $V_{\text{SS}}=0\text{V}$ , unless otherwise specified.)

Parameter	Symbol	$V_{\text{DD}}$	Conditions	Min.	Typ.	Max.	Unit
nCP to Qn propagation delay time	$t_{\text{PHL}}, t_{\text{PLH}}$	5V	$C_L=50\text{pF}$ , see Figure 3	-	-	300	ns
		10V		-	-	132	ns
		15V		-	-	96	ns
MR to Qn HIGH to LOW propagation delay	$t_{\text{PHL}}$	5V	$C_L=50\text{pF}$ , see Figure 4	-	-	288	ns
		10V		-	-	132	ns
		15V		-	-	96	ns
transition time	$t_{\text{THL}}, t_{\text{TLH}}$	5V	$C_L=50\text{pF}$ , see Figure 3	-	-	244	ns
		10V		-	-	72	ns
		15V		-	-	48	ns
nD to nCP set-up time	tsu	5V	$C_L=50\text{pF}$ , see Figure 5	30	-	-	ns
		10V		30	-	-	ns
		15V		24	-	-	ns
nD to nCP hold time	th	5V	$C_L=50\text{pF}$ , see Figure 6	48	-	-	ns
		10V		24	-	-	ns
		15V		18	-	-	ns
CP LOW; Minimum width Pulse width	tw	5V	$C_L=50\text{pF}$ , see Figure 6	72	-	-	ns
		10V		36	-	-	ns
		15V		24	-	-	ns
nMR HIGH; minimum width;	tw	5V	$C_L=50\text{pF}$ , see Figure 4	96	-	-	ns
		10V		36	-	-	ns
		15V		28	-	-	ns
recovery time	trec	5V	$C_L=50\text{pF}$ , see Figure 4	60	-	-	ns
		10V		36	-	-	ns
		15V		24	-	-	ns
Maximum frequency	fmax	5V	$C_L=50\text{pF}$ , see Figure 5	5.8	-	-	MHZ
		10V		12.5	-	-	MHZ
		15V		18.3	-	-	MHZ





## 4、Testing Circuit

### 4.1、AC Testing Circuit

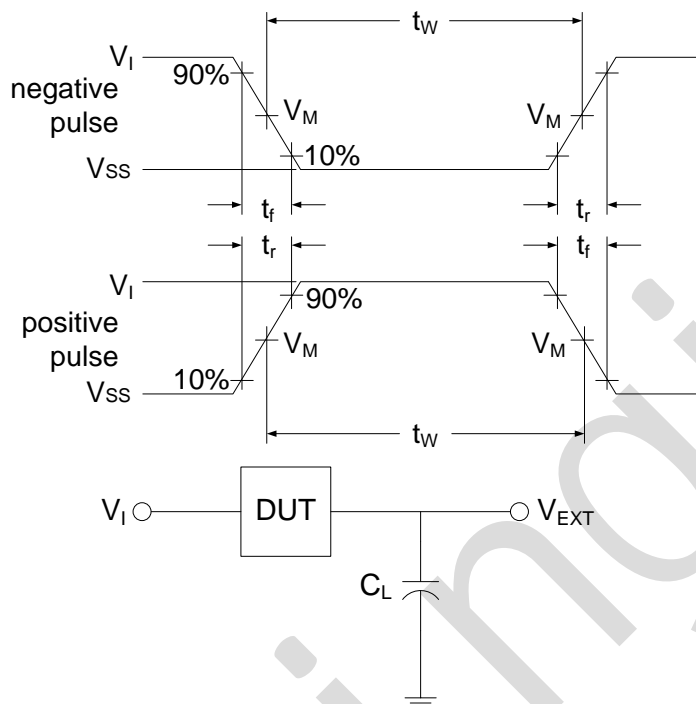


Figure 2. Load circuit

$C_L$  includes probe and jig capacitance.

### 4.2、Test Data

Supply voltage	Input		Load	$V_{EXT}$		
$V_{DD}$	$V_I$	$t_r = t_f$	$C_L$	$t_{PLH}/t_{PHL}$	$t_{PLZ}/t_{PZL}$	$t_{PHZ}/t_{PZH}$
5V to 15V	$V_{DD}$	$\leq 20ns$	50pF	Open	$V_{DD}$	$V_{SS}$

### 4.3、AC Testing Waveforms

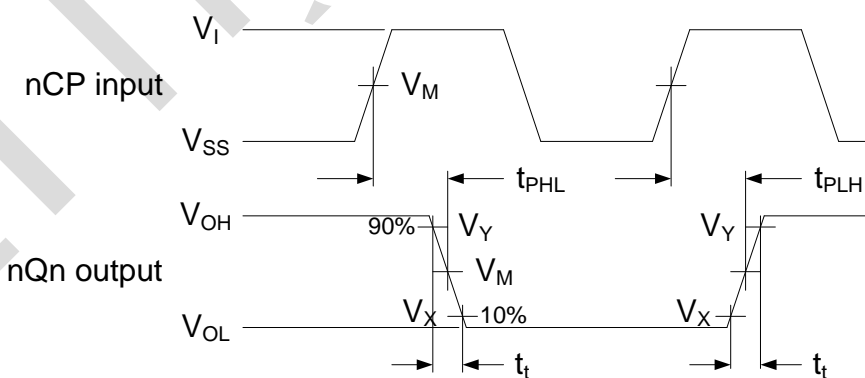


Figure 3. Propagation delay, output transition time

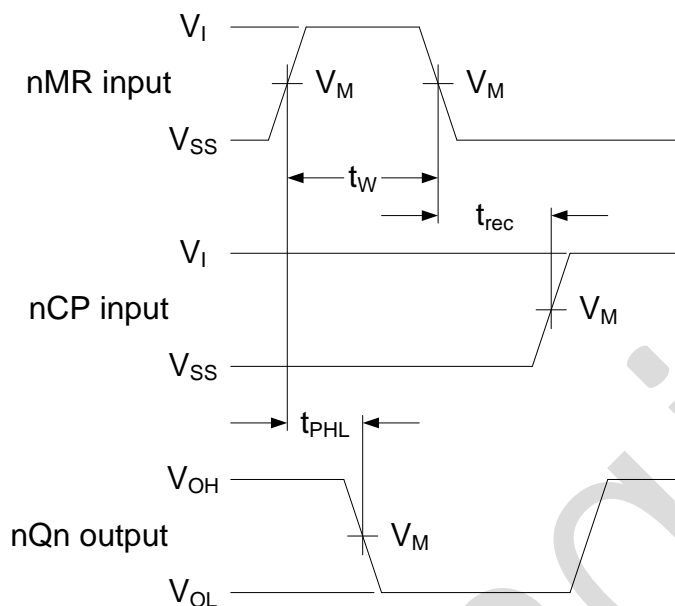


Figure 4. Waveforms showing MR recovery time, propagation delay and minimum pulse width

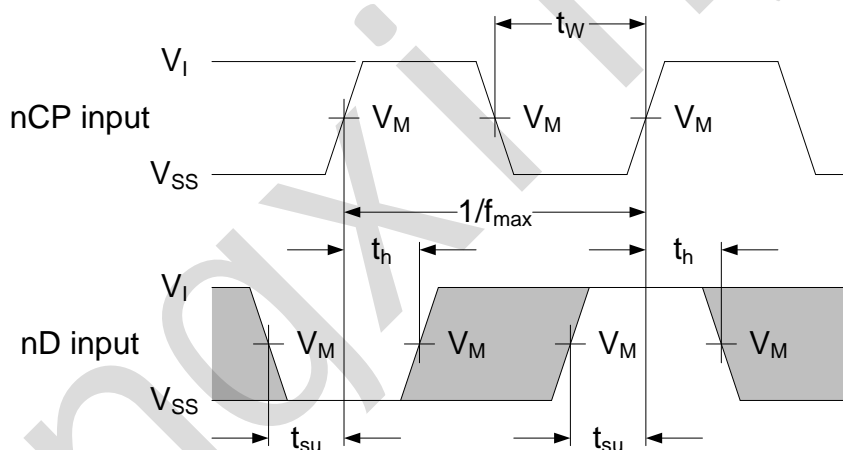


Figure 5. Waveforms showing set-up times, hold times, and minimum clock pulse width

#### 4.4. Measurement Points

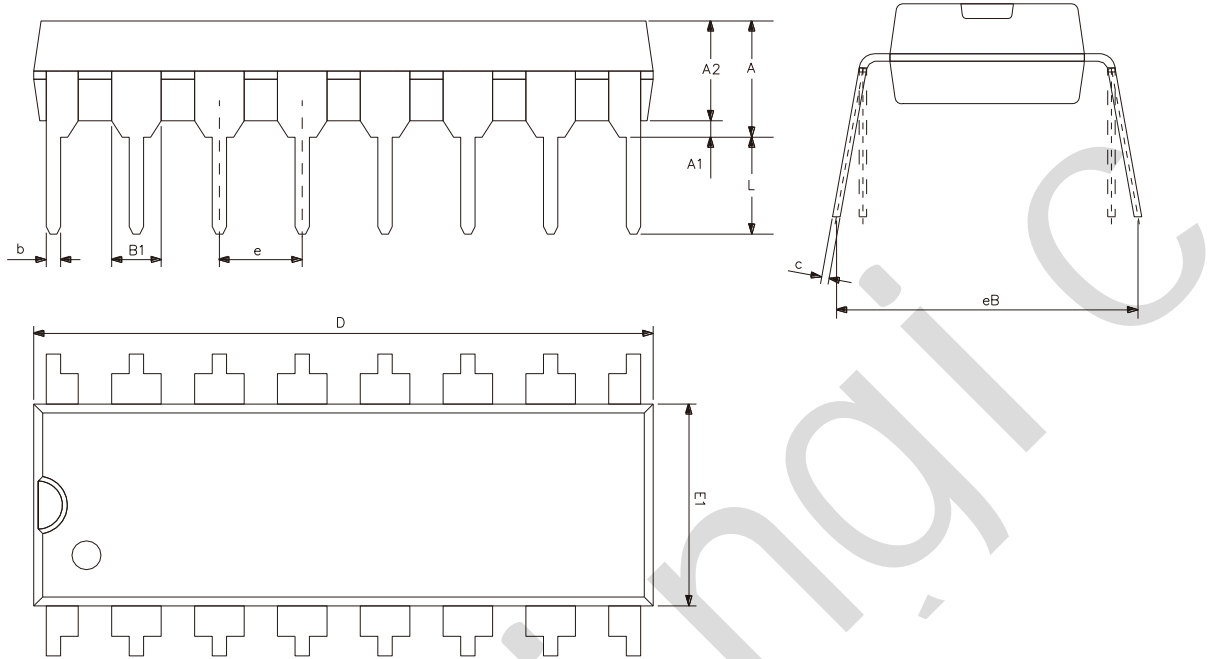
Supply voltage	Input	Output		
$V_{DD}$	$V_M$	$V_M$	$V_X$	$V_Y$
5V to 15V	$0.5 \times V_{DD}$	$0.5 \times V_{DD}$	$0.1 \times V_{DD}$	$0.9 \times V_{DD}$



灵星芯微 专注经营

## 5、Package Information

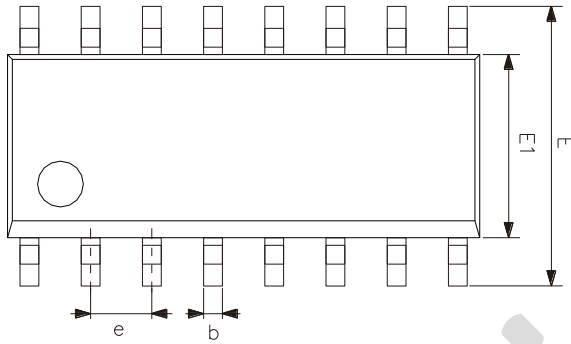
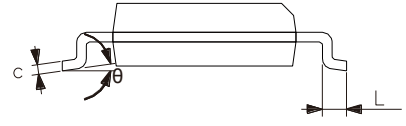
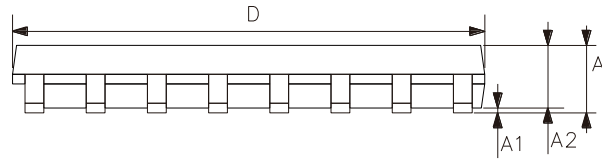
### 5.1、DIP16



Symbol	Dimensions (mm)	
	Min.	Max.
A2	3.20	3.60
A1	0.51	-
A	3.60	5.33
L	3.00	3.60
b	0.36	0.56
B1	1.52	
D	18.80	19.94
E1	6.20	6.60
e	2.54	
c	0.20	0.36
eB	7.62	9.30



## 5.2、SOP16

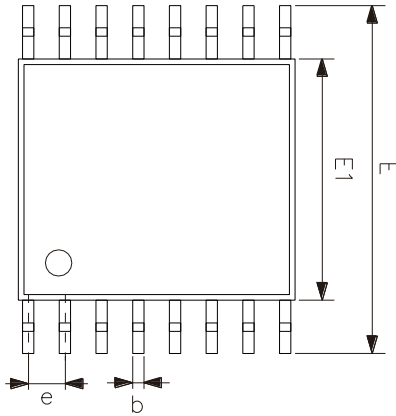
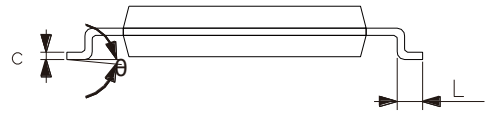
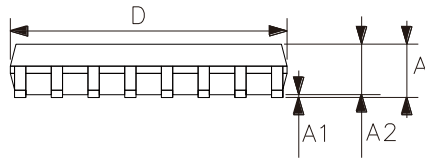


Symbol	Dimensions (mm)	
	Min.	Max.
A	1.35	1.80
A1	0.10	0.25
A2	1.25	1.55
b	0.33	0.51
c	0.19	0.25
D	9.50	10.10
E	5.80	6.30
E1	3.70	4.10
e	1.27	
L	0.35	0.89
θ	0°	8°



灵星芯微 芯片封装

5.3、TSSOP16



Symbol	Dimensions (mm)	
	Min.	Max.
A	-	1.20
A1	0.05	0.15
A2	0.80	1.05
b	0.19	0.30
c	0.09	0.20
D	4.90	5.10
E1	4.30	4.50
E	6.20	6.60
e	0.65	
L	0.45	0.75
θ	0°	8°



## 6、 Statements And Notes

### 6.1、 The name and content of Hazardous substances or Elements in the product

Part name	Hazardous substances or Elements									
	Lead and lead compounds	Mercury and mercury compounds	Cadmium and cadmium compounds	Hexavalent chromium compounds	Polybrominated biphenyls	Polybrominated biphenyl ethers	Dibutyl phthalate	Butylbenzyl phthalate	Di-2-ethylhexyl phthalate	Diisobutyl phthalate
Lead frame	○	○	○	○	○	○	○	○	○	○
Plastic resin	○	○	○	○	○	○	○	○	○	○
Chip	○	○	○	○	○	○	○	○	○	○
The lead	○	○	○	○	○	○	○	○	○	○
Plastic sheet installed	○	○	○	○	○	○	○	○	○	○
explanation	○: Indicates that the content of hazardous substances or elements in the detection limit of the following the SJ/T11363-2006 standard. ×: Indicates that the content of hazardous substances or elements exceeding the SJ/T11363-2006 Standard limit requirements.									

## X-ON Electronics

Largest Supplier of Electrical and Electronic Components

*Click to view similar products for [Counter Shift Registers](#) category:*

*Click to view products by [lingxingic](#) manufacturer:*

Other Similar products are found below :

[CD4031BE](#) [CD4034BE](#) [NLV74HC165ADTR2G](#) [5962-9172201M2A](#) [MC100EP142MNG](#) [MC100EP016AMNG](#) [MC74LV594ADR2G](#)  
[NLV14094BDTR2G](#) [NLV74HC589ADR2G](#) [AiP74HC595TA16.TR](#) [SN74LS295BN](#) [AIP74HC164TA14.TR](#) [TM74HC164](#) [74HC164D](#)  
[AiP74HC165SA16.TR](#) [74HC573D](#) [AiP74HC165TA16.TR](#) [XL74HC597-TS](#) [74HC164MT/TR](#) [XL74HC595TS](#) [74HC595DMT/TR](#)  
[CD4094DMT/TR](#) [74HC595D\(MS\)](#) [CD4094DM/TR](#) [74HC164D](#) [GN165D](#) [74HC595DM/TR](#) [AIP74HC595SA.TR](#) [XL4021B](#)  
[74HC164D\(MS\)](#) [74HC595MT/TR](#) [XL74HC165-TS](#) [74HC595D](#) [74HC595D](#) [74HC595D.](#) [74HCT595BQ](#) [RS595SXTSS16](#)  
[Aip74HC595SA16.TR](#) [SN74LS164DR-HXY](#) [74HC164DR](#) [RS595SXS16](#) [74HC165-HXY](#) [RS164XQ](#) [GN74HC595D](#) [74HC164DRG](#)  
[XD74HC165](#) [SN74LV165AQWBQBRQ1](#) [AiP74HC4094SA16.TR](#) [HX74HC595IDRG](#) [CD4094DN](#)