



SN74LS175 (LX)

Quad D-type flip-flop with reset; positive-edge trigger

Product Specification

Specification Revision History:

Version	Date	Description
2022-12-A1	2022-12	New



Contents

1、 General Description.....	1
2、 Block Diagram And Pin Description	4
2.1、 Block Diagram.....	4
2.2、 Pin Configurations	4
2.3、 Pin Description	5
2.4、 Function table	5
3、 Electrical Parameter	6
3.1、 Absolute Maximum Ratings	6
3.2、 Recommended Operating Conditions	6
3.3、 Electrical Characteristics	7
3.3.1、 DC Characteristics 1	7
3.3.2、 DC Characteristics 2	8
3.3.3、 DC Characteristics 3	9
3.3.4、 AC Characteristics 1	10
3.3.5、 AC Characteristics 2	11
3.3.6、 AC Characteristics 3	12
4、 Testing Circuit	13
4.1、 AC Testing Circuit.....	13
4.2、 AC Testing Waveforms	14
4.3、 Measurement Points.....	15
4.4、 Test Data.....	15
5、 Package Information	16
5.1、 DIP16.....	16
5.2、 SOP16.....	17
5.3、 TSSOP16	18



6、 Statements And Notes	19
6.1、 The name and content of Hazardous substances or Elements in the product	19
6.2、 Notes	19

Lingxingmicro.com



灵星芯微 集成电路

1、 General Description

The SN74LS175 is a quad positive-edge triggered D-type flip-flop with individual data inputs (D_n) and complementary outputs (Q_n and $\overline{Q_n}$).

Features:

- Four edge-triggered D-type flip-flops
- Asynchronous master reset
- Specified from -40°C to $+125^{\circ}\text{C}$
- Packaging information: DIP16/SOP16/TSSOP16



Ordering Information:

Tube packing specifications:

Part number	Packaging form	Marking code	Tube quantity	Boxed tube quantity	Boxed quantity	Notes
SN74LS175N (LX)	DIP16	SN74LS175N	25 PCS/tube	40 tube/box	1000 PCS/box	Dimensions of plastic enclosure: 19.0mm×6.4mm Pin spacing: 2.54mm
SN74LS175D (LX)	SOP16	LS175	50 PCS/tube	200 tube/box	10000 PCS/box	Dimensions of plastic enclosure: 10.0mm×3.9mm Pin spacing: 1.27mm
SN74LS175PW(LX)	TSSOP16	LS175	96 PCS/tube	200 tube/box	19200 PCS/box	Dimensions of plastic enclosure: 5.0mm×4.4mm Pin spacing: 0.65mm



灵星芯微 精芯经营

Reel packing specifications:

Part number	Packaging form	Marking code	Reel quantity	Boxed reel quantity	Notes
SN74LS175DR (LX)	SOP16	LS175	2500 PCS/reel	5000 PCS/box	Dimensions of plastic enclosure: 10.0mm×3.9mm Pin spacing: 1.27mm
SN74LS175PW (LX)	TSSOP16	LS175	5000 PCS/reel	10000 PCS/box	Dimensions of plastic enclosure: 5.0mm×4.4mm Pin spacing: 0.65mm

Note: If the physical information is inconsistent with the ordering information, please refer to the actual product.



2、Block Diagram And Pin Description

2.1、Block Diagram

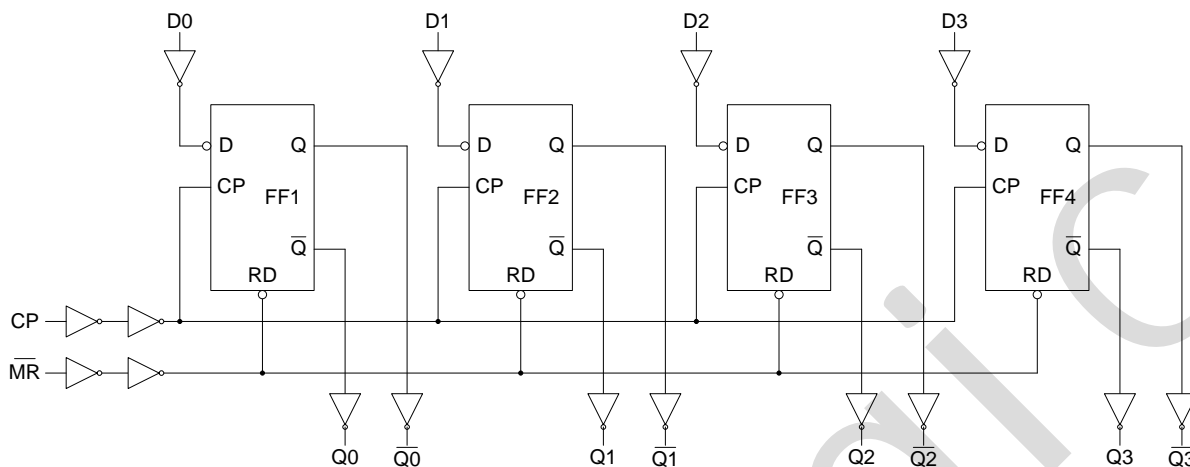
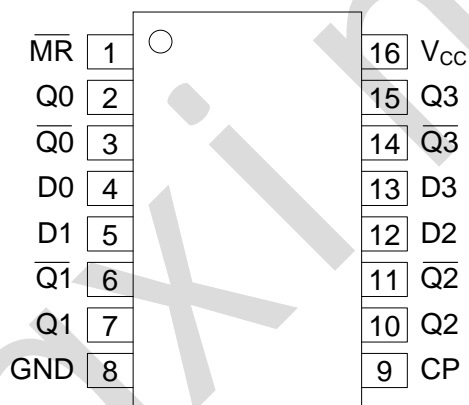


Figure 1. Logic diagram

2.2、Pin Configurations





2.3、Pin Description

Pin No.	Pin Name	Description
1		asynchronous master reset input (active LOW)
2	Q0	flip-flop output
3	$\overline{Q0}$	complementary flip-flop output
4	D0	data input
5	D1	data input
6	$\overline{Q1}$	complementary flip-flop output
7	Q1	flip-flop output
8	GND	ground (0V)
9	CP	clock input (LOW-to-HIGH edge-triggered)
10	Q2	flip-flop output
11	$\overline{Q2}$	complementary flip-flop output
12	D2	data input
13	D3	data input
14	$\overline{Q3}$	complementary flip-flop output
15	Q3	flip-flop output
16	V _{cc}	positive supply voltage

2.4、Function table

Operating mode	Inputs			Outputs	
	\overline{MR}	CP	D _n	Q _n	$\overline{Q_n}$
reset (clear)	L	X	X	L	H
load "1"	H	↑	h	H	L
load "0"	H	↑	l	L	H

Note:

H=HIGH voltage level; L=LOW voltage level; X=don't care;

↑=LOW-to-HIGH clock transition;

h=HIGH voltage level one set-up time prior to the LOW-to-HIGH clock transition;

l=LOW voltage level one set-up time prior to the LOW-to-HIGH clock transition.



3、Electrical Parameter

3.1、Absolute Maximum Ratings

($T_{amb}=25^{\circ}\text{C}$, voltages are referenced to GND (ground=0V), unless otherwise specified)

Characteristic	Symbol	Conditions	Min.	Max.	Unit
supply voltage	V_{CC}	-	-0.5	+7.0	V
input clamping current	I_{IK}	$V_I < -0.5\text{V}$ or $V_I > V_{CC} + 0.5\text{V}$	-	+20	mA
output clamping current	I_{OK}	$V_O < -0.5\text{V}$ or $V_O > V_{CC} + 0.5\text{V}$	-	± 20	mA
output current	I_O	$V_O = -0.5\text{V}$ to $(V_{CC} + 0.5\text{V})$	-	± 25	mA
supply current	I_{CC}	-	-	+50	mA
ground current	I_{GND}	-	-50	-	mA
storage temperature	T_{stg}	-	-65	+150	$^{\circ}\text{C}$
total power dissipation	P_{tot}	-	-	500	mW
soldering temperature	T_L	10s	DIP	245	$^{\circ}\text{C}$
			SOP/TSSOP	260	$^{\circ}\text{C}$

3.2、Recommended Operating Conditions

(Voltages are referenced to GND (ground=0V), unless otherwise specified.)

Parameter	Symbol	Conditions	Min.	Typ.	Max.	Unit
supply voltage	V_{CC}	-	2.0	5.0	6.0	V
input voltage	V_I	-	0	-	V_{CC}	V
output voltage	V_O	-	0	-	V_{CC}	V
ambient temperature	T_{amb}	-	-40	-	+125	$^{\circ}\text{C}$



3.3、Electrical Characteristics

3.3.1、DC Characteristics 1

($T_{amb}=25^{\circ}C$, voltages are referenced to GND (ground=0V), unless otherwise specified)

Parameter	Symbol	Conditions	Min.	Typ.	Max.	Unit	
HIGH-level input voltage	V_{IH}	$V_{CC}=2.0V$	1.5	1.2	-	V	
		$V_{CC}=4.5V$	3.15	2.4	-	V	
		$V_{CC}=6.0V$	4.2	3.2	-	V	
LOW-level input voltage	V_{IL}	$V_{CC}=2.0V$	-	0.8	0.5	V	
		$V_{CC}=4.5V$	-	2.1	1.35	V	
		$V_{CC}=6.0V$	-	2.8	1.8	V	
HIGH-level output voltage	V_{OH}	$V_I=V_{IH}$ or V_{IL}	$I_O=-20\mu A; V_{CC}=2.0V$	1.9	2.0	-	V
			$I_O=-20\mu A; V_{CC}=4.5V$	4.4	4.5	-	V
			$I_O=-20\mu A; V_{CC}=6.0V$	5.9	6.0	-	V
			$I_O=-4mA; V_{CC}=4.5V$	3.98	4.32	-	V
			$I_O=-5.2mA; V_{CC}=6.0V$	5.48	5.81	-	V
LOW-level output voltage	V_{OL}	$V_I=V_{IH}$ or V_{IL}	$I_O=20\mu A; V_{CC}=2.0V$	-	0	0.1	V
			$I_O=20\mu A; V_{CC}=4.5V$	-	0	0.1	V
			$I_O=20\mu A; V_{CC}=6.0V$	-	0	0.1	V
			$I_O=4mA; V_{CC}=4.5V$	-	0.15	0.26	V
			$I_O=5.2mA; V_{CC}=6.0V$	-	0.16	0.26	V
input leakage current	I_I	$V_I=V_{CC}$ or GND; $V_{CC}=6.0V$	-	-	± 1	μA	
supply current	I_{CC}	$V_I=V_{CC}$ or GND; $I_O=0A; V_{CC}=6.0V$	-	-	1	μA	



3.3.2、DC Characteristics 2

($T_{amb} = -40^{\circ}\text{C}$ to $+85^{\circ}\text{C}$, voltages are referenced to GND (ground=0V), unless otherwise specified)

Parameter	Symbol	Conditions	Min.	Typ.	Max.	Unit	
HIGH-level input voltage	V_{IH}	$V_{CC}=2.0\text{V}$	1.5	-	-	V	
		$V_{CC}=4.5\text{V}$	3.15	-	-	V	
		$V_{CC}=6.0\text{V}$	4.2	-	-	V	
LOW-level input voltage	V_{IL}	$V_{CC}=2.0\text{V}$	-	-	0.5	V	
		$V_{CC}=4.5\text{V}$	-	-	1.35	V	
		$V_{CC}=6.0\text{V}$	-	-	1.8	V	
HIGH-level output voltage	V_{OH}	$V_I = V_{IH}$ or V_{IL}	$I_O = -20\mu\text{A}; V_{CC} = 2.0\text{V}$	1.9	-	-	V
			$I_O = -20\mu\text{A}; V_{CC} = 4.5\text{V}$	4.4	-	-	V
			$I_O = -20\mu\text{A}; V_{CC} = 6.0\text{V}$	5.9	-	-	V
			$I_O = -4\text{mA}; V_{CC} = 4.5\text{V}$	3.84	-	-	V
			$I_O = -5.2\text{mA}; V_{CC} = 6.0\text{V}$	5.34	-	-	V
LOW-level output voltage	V_{OL}	$V_I = V_{IH}$ or V_{IL}	$I_O = 20\mu\text{A}; V_{CC} = 2.0\text{V}$	-	-	0.1	V
			$I_O = 20\mu\text{A}; V_{CC} = 4.5\text{V}$	-	-	0.1	V
			$I_O = 20\mu\text{A}; V_{CC} = 6.0\text{V}$	-	-	0.1	V
			$I_O = 4\text{mA}; V_{CC} = 4.5\text{V}$	-	-	0.33	V
			$I_O = 5.2\text{mA}; V_{CC} = 6.0\text{V}$	-	-	0.33	V
input leakage current	I_I	$V_I = V_{CC}$ or GND; $V_{CC} = 6.0\text{V}$	-	-	± 2	μA	
supply current	I_{CC}	$V_I = V_{CC}$ or GND; $I_O = 0\text{A}; V_{CC} = 6.0\text{V}$	-	-	2	μA	



3.3.3、DC Characteristics 3

($T_{amb} = -40^{\circ}\text{C}$ to $+125^{\circ}\text{C}$, voltages are referenced to GND (ground=0V), unless otherwise specified)

Parameter	Symbol	Conditions	Min.	Typ.	Max.	Unit	
HIGH-level input voltage	V_{IH}	$V_{CC}=2.0\text{V}$	1.5	-	-	V	
		$V_{CC}=4.5\text{V}$	3.15	-	-	V	
		$V_{CC}=6.0\text{V}$	4.2	-	-	V	
LOW-level input voltage	V_{IL}	$V_{CC}=2.0\text{V}$	-	-	0.5	V	
		$V_{CC}=4.5\text{V}$	-	-	1.35	V	
		$V_{CC}=6.0\text{V}$	-	-	1.8	V	
HIGH-level output voltage	V_{OH}	$V_I = V_{IH}$ or V_{IL}	$I_O = -20\mu\text{A}; V_{CC} = 2.0\text{V}$	1.9	-	-	V
			$I_O = -20\mu\text{A}; V_{CC} = 4.5\text{V}$	4.4	-	-	V
			$I_O = -20\mu\text{A}; V_{CC} = 6.0\text{V}$	5.9	-	-	V
			$I_O = -4\text{mA}; V_{CC} = 4.5\text{V}$	3.7	-	-	V
			$I_O = -5.2\text{mA}; V_{CC} = 6.0\text{V}$	5.2	-	-	V
LOW-level output voltage	V_{OL}	$V_I = V_{IH}$ or V_{IL}	$I_O = 20\mu\text{A}; V_{CC} = 2.0\text{V}$	-	-	0.1	V
			$I_O = 20\mu\text{A}; V_{CC} = 4.5\text{V}$	-	-	0.1	V
			$I_O = 20\mu\text{A}; V_{CC} = 6.0\text{V}$	-	-	0.1	V
			$I_O = 4\text{mA}; V_{CC} = 4.5\text{V}$	-	-	0.4	V
			$I_O = 5.2\text{mA}; V_{CC} = 6.0\text{V}$	-	-	0.4	V
input leakage current	I_I	$V_I = V_{CC}$ or GND; $V_{CC} = 6.0\text{V}$	-	-	± 4	μA	
supply current	I_{CC}	$V_I = V_{CC}$ or GND; $I_O = 0\text{A}; V_{CC} = 6.0\text{V}$	-	-	4	μA	



3.3.4、AC Characteristics 1

($T_{amb}=25^{\circ}C$, $GND=0V$, $C_L=50pF$, unless otherwise specified)

Parameter	Symbol	Conditions	Min.	Typ.	Max.	Unit	
propagation delay	t_{PLH}/t_{PHL}	CP to Qn, ; see Figure 4	$V_{CC}=2.0V$	-	55	175	ns
			$V_{CC}=4.5V$	-	50	35	ns
			$V_{CC}=5.0V$ $C_L=15pF$	-	17	-	ns
			$V_{CC}=6.0V$	-	16	30	ns
HIGH to LOW propagation delay	t_{PHL}	to Qn, ; see Figure 6	$V_{CC}=2.0V$	-	50	150	ns
			$V_{CC}=4.5V$	-	18	30	ns
			$V_{CC}=5.0V$ $C_L=15pF$	-	15	-	ns
			$V_{CC}=6.0V$	-	14	26	ns
transition time	t_t	Qn output; see Figure 4	$V_{CC}=2.0V$	-	19	75	ns
			$V_{CC}=4.5V$	-	7	15	ns
			$V_{CC}=6.0V$	-	6	13	ns
pulse width	t_w	CP input HIGH or LOW; see Figure 4	$V_{CC}=2.0V$	80	22	-	ns
			$V_{CC}=4.5V$	16	8	-	ns
			$V_{CC}=6.0V$	14	6	-	ns
		input LOW; see Figure 6	$V_{CC}=2.0V$	80	19	-	ns
			$V_{CC}=4.5V$	16	7	-	ns
			$V_{CC}=6.0V$	14	6	-	ns
recovery time	t_{rec}	\overline{MR} to CP; see Figure 6	$V_{CC}=2.0V$	5	-33	-	ns
			$V_{CC}=4.5V$	5	-12	-	ns
			$V_{CC}=6.0V$	5	-10	-	ns
set-up time	t_{su}	Dn to CP; see Figure 4	$V_{CC}=2.0V$	80	3	-	ns
			$V_{CC}=4.5V$	16	1	-	ns
			$V_{CC}=6.0V$	14	1	-	ns
hold time	t_h	Dn to CP; see Figure 4	$V_{CC}=2.0V$	25	2	-	ns
			$V_{CC}=4.5V$	5	0	-	ns
			$V_{CC}=6.0V$	4	0	-	ns
maximum frequency	f_{max}	CP input; see Figure 4	$V_{CC}=2.0V$	6	25	-	ns
			$V_{CC}=4.5V$	30	75	-	ns
			$V_{CC}=5.0V$ $C_L=15pF$	-	83	-	ns
			$V_{CC}=6.0V$	35	89	-	ns



3.3.5、AC Characteristics 2

($T_{amb} = -40^{\circ}\text{C}$ to $+85^{\circ}\text{C}$, $GND = 0\text{V}$, $C_L = 50\text{pF}$, unless otherwise specified)

Parameter	Symbol	Conditions	Min.	Typ.	Max.	Unit	
propagation delay	t_{PLH}/t_{PHL}	CP to Qn, ; see Figure 4	$V_{CC} = 2.0\text{V}$	-	-	220	ns
			$V_{CC} = 4.5\text{V}$	-	-	44	ns
			$V_{CC} = 6.0\text{V}$	-	-	37	ns
HIGH to LOW propagation delay	t_{PHL}	$\overline{\text{MR}}$ to Qn, Qn; see Figure 6	$V_{CC} = 2.0\text{V}$	-	-	190	ns
			$V_{CC} = 4.5\text{V}$	-	-	38	ns
			$V_{CC} = 6.0\text{V}$	-	-	33	ns
transition time	t_t	Qn output; see Figure 4	$V_{CC} = 2.0\text{V}$	-	-	95	ns
			$V_{CC} = 4.5\text{V}$	-	-	19	ns
			$V_{CC} = 6.0\text{V}$	-	-	16	ns
pulse width	t_w	CP input HIGH or LOW; see Figure 4	$V_{CC} = 2.0\text{V}$	100	-	-	ns
			$V_{CC} = 4.5\text{V}$	20	-	-	ns
			$V_{CC} = 6.0\text{V}$	17	-	-	ns
		$\overline{\text{MR}}$ input LOW; see Figure 6	$V_{CC} = 2.0\text{V}$	100	-	-	ns
			$V_{CC} = 4.5\text{V}$	20	-	-	ns
			$V_{CC} = 6.0\text{V}$	17	-	-	ns
recovery time	t_{rec}	$\overline{\text{MR}}$ to CP; see Figure 6	$V_{CC} = 2.0\text{V}$	5	-	-	ns
			$V_{CC} = 4.5\text{V}$	5	-	-	ns
			$V_{CC} = 6.0\text{V}$	5	-	-	ns
set-up time	t_{su}	Dn to CP; see Figure 4	$V_{CC} = 2.0\text{V}$	100	-	-	ns
			$V_{CC} = 4.5\text{V}$	20	-	-	ns
			$V_{CC} = 6.0\text{V}$	17	-	-	ns
hold time	t_h	Dn to CP; see Figure 4	$V_{CC} = 2.0\text{V}$	30	-	-	ns
			$V_{CC} = 4.5\text{V}$	6	-	-	ns
			$V_{CC} = 6.0\text{V}$	5	-	-	ns
maximum frequency	f_{max}	CP input; see Figure 4	$V_{CC} = 2.0\text{V}$	4.8	-	-	ns
			$V_{CC} = 4.5\text{V}$	24	-	-	ns
			$V_{CC} = 6.0\text{V}$	28	-	-	ns



3.3.6、AC Characteristics 3

($T_{amb} = -40^{\circ}\text{C}$ to $+125^{\circ}\text{C}$, $GND = 0V$, $C_L = 50pF$, unless otherwise specified)

Parameter	Symbol	Conditions	Min.	Typ.	Max.	Unit	
propagation delay	t_{PLH}/t_{PHL}	CP to Qn, \overline{Qn} ; see Figure 4	$V_{CC} = 2.0V$	-	-	265	ns
			$V_{CC} = 4.5V$	-	-	53	ns
			$V_{CC} = 6.0V$	-	-	45	ns
HIGH to LOW propagation delay	t_{PHL}	\overline{MR} to Qn, \overline{Qn} ; see Figure 6	$V_{CC} = 2.0V$	-	-	225	ns
			$V_{CC} = 4.5V$	-	-	45	ns
			$V_{CC} = 6.0V$	-	-	38	ns
transition time	t_t	Qn output; see Figure 4	$V_{CC} = 2.0V$	-	-	110	ns
			$V_{CC} = 4.5V$	-	-	22	ns
			$V_{CC} = 6.0V$	-	-	19	ns
pulse width	t_w	CP input HIGH or LOW; see Figure 4	$V_{CC} = 2.0V$	120	-	-	ns
			$V_{CC} = 4.5V$	24	-	-	ns
			$V_{CC} = 6.0V$	20	-	-	ns
		\overline{MR} input LOW; see Figure 6	$V_{CC} = 2.0V$	120	-	-	ns
			$V_{CC} = 4.5V$	24	-	-	ns
			$V_{CC} = 6.0V$	20	-	-	ns
recovery time	t_{rec}	\overline{MR} to CP; see Figure 6	$V_{CC} = 2.0V$	5	-	-	ns
			$V_{CC} = 4.5V$	5	-	-	ns
			$V_{CC} = 6.0V$	5	-	-	ns
set-up time	t_{su}	Dn to CP; see Figure 4	$V_{CC} = 2.0V$	120	-	-	ns
			$V_{CC} = 4.5V$	24	-	-	ns
			$V_{CC} = 6.0V$	20	-	-	ns
hold time	t_h	Dn to CP; see Figure 4	$V_{CC} = 2.0V$	40	-	-	ns
			$V_{CC} = 4.5V$	8	-	-	ns
			$V_{CC} = 6.0V$	7	-	-	ns
maximum frequency	f_{max}	CP input; see Figure 4	$V_{CC} = 2.0V$	4	-	-	ns
			$V_{CC} = 4.5V$	20	-	-	ns
			$V_{CC} = 6.0V$	24	-	-	ns

4、Testing Circuit

4.1、AC Testing Circuit

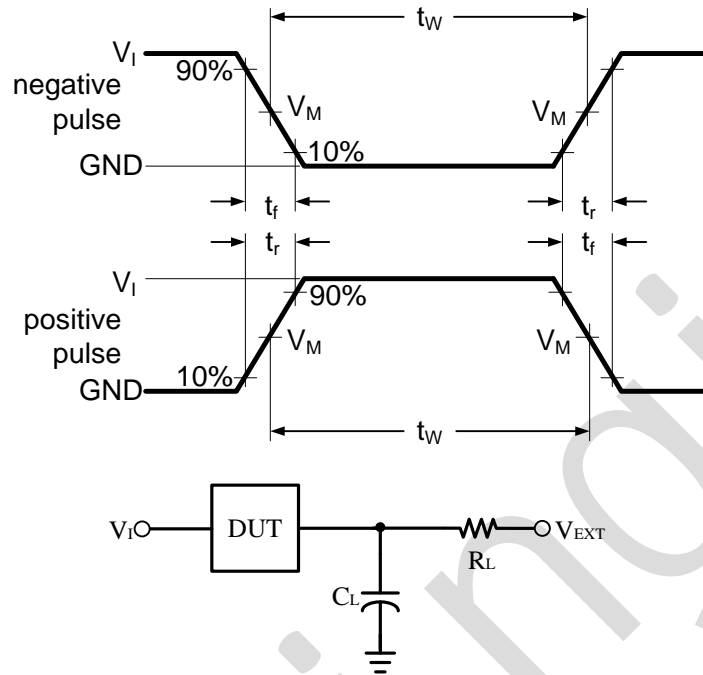


Figure 3. Test circuit for measuring switching times

Definitions for test circuit:

C_L includes probe and jig capacitance.



4.2、AC Testing Waveforms

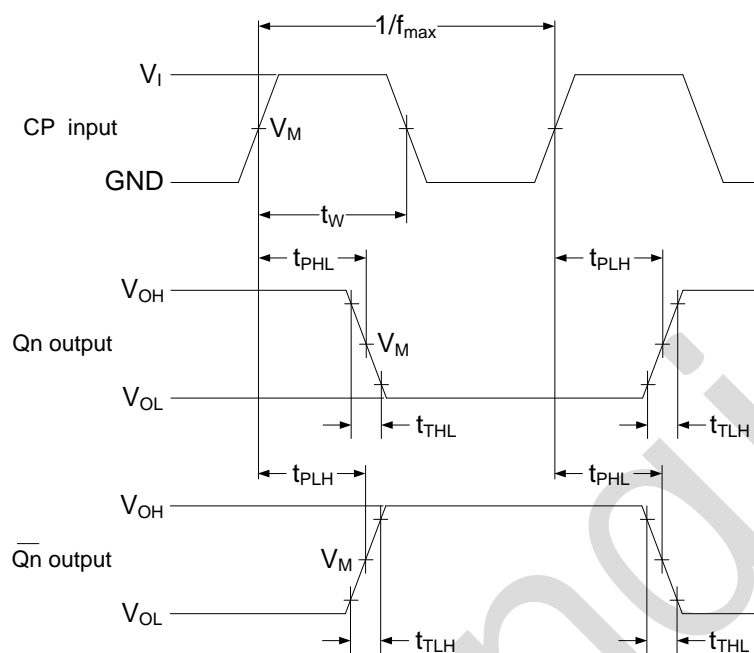


Figure 4. Input to output propagation delay, output transition time, clock input pulse width and maximum frequency

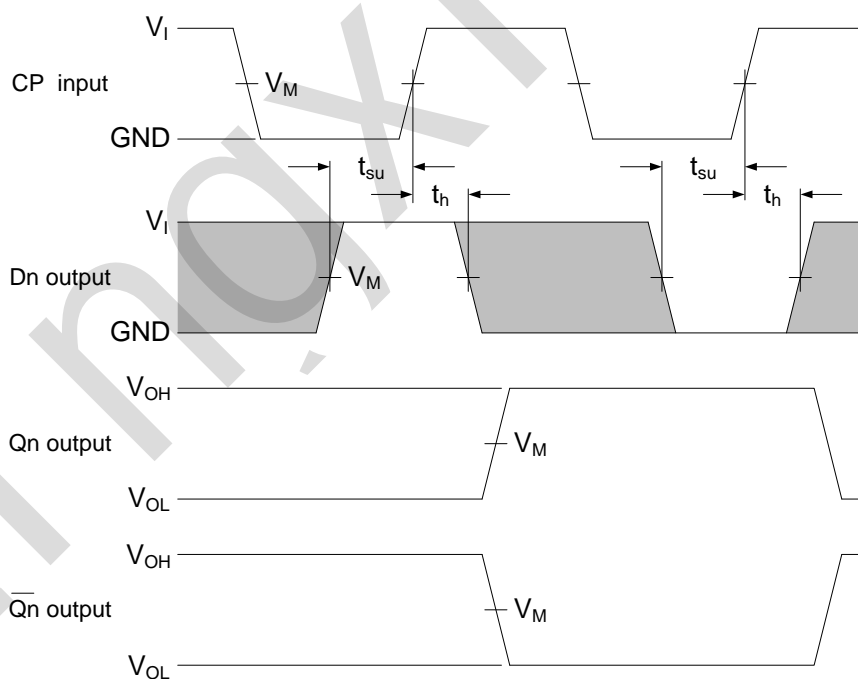


Figure 5. Data set-up and hold times for data input

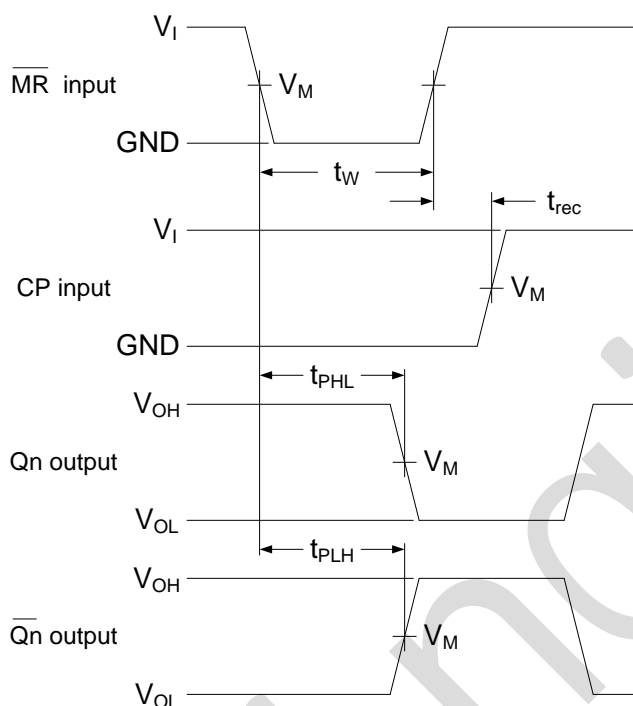


Figure 6. Master reset to output propagation delays, master reset pulse width and master reset to clock recovery time

4.3. Measurement Points

Input		Output
V_I	V_M	V_M
V_{CC}	$0.5 \times V_{CC}$	$0.5 \times V_{CC}$

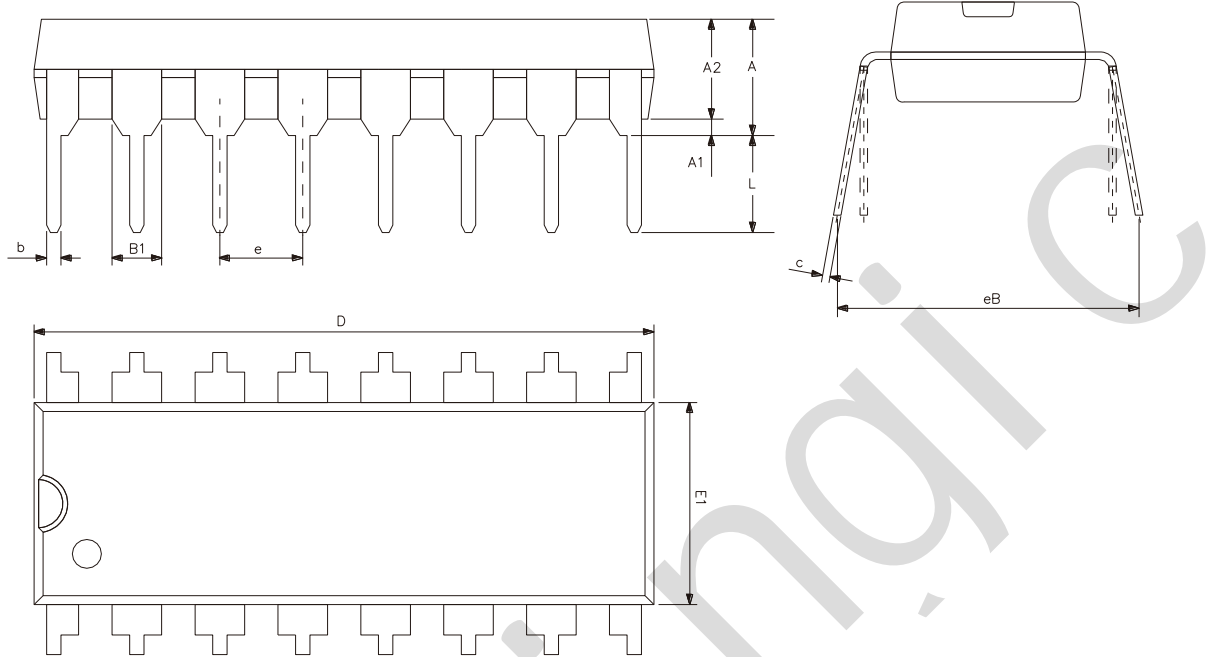
4.4. Test Data

Input		Load		Test
V_I	t_r, t_f	C_L	R_L	
V_{CC}	3.0ns	15pF, 50pF	1kΩ	t_{PLH}, t_{PHL}



5、Package Information

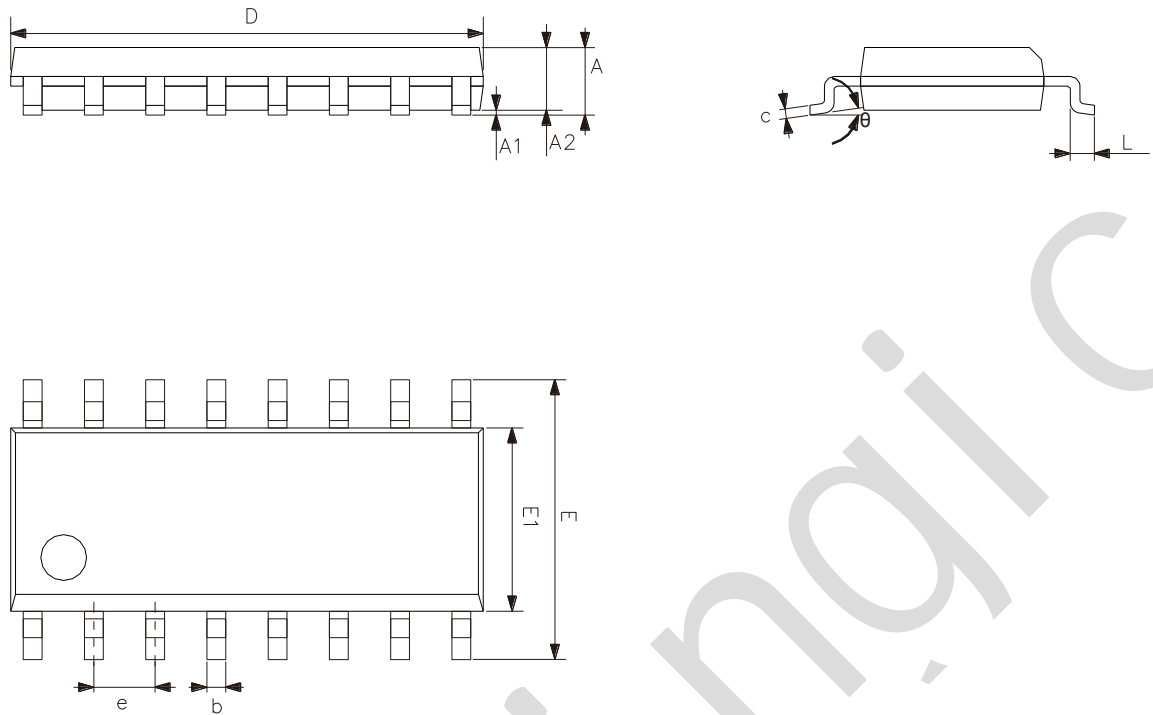
5.1、DIP16



Symbol	Dimensions (mm)	
	Min.	Max.
A2	3.20	3.60
A1	0.51	-
A	3.60	5.33
L	3.00	3.60
b	0.36	0.56
B1	1.52	
D	18.80	19.94
E1	6.20	6.60
e	2.54	
c	0.20	0.36
eB	7.62	9.30



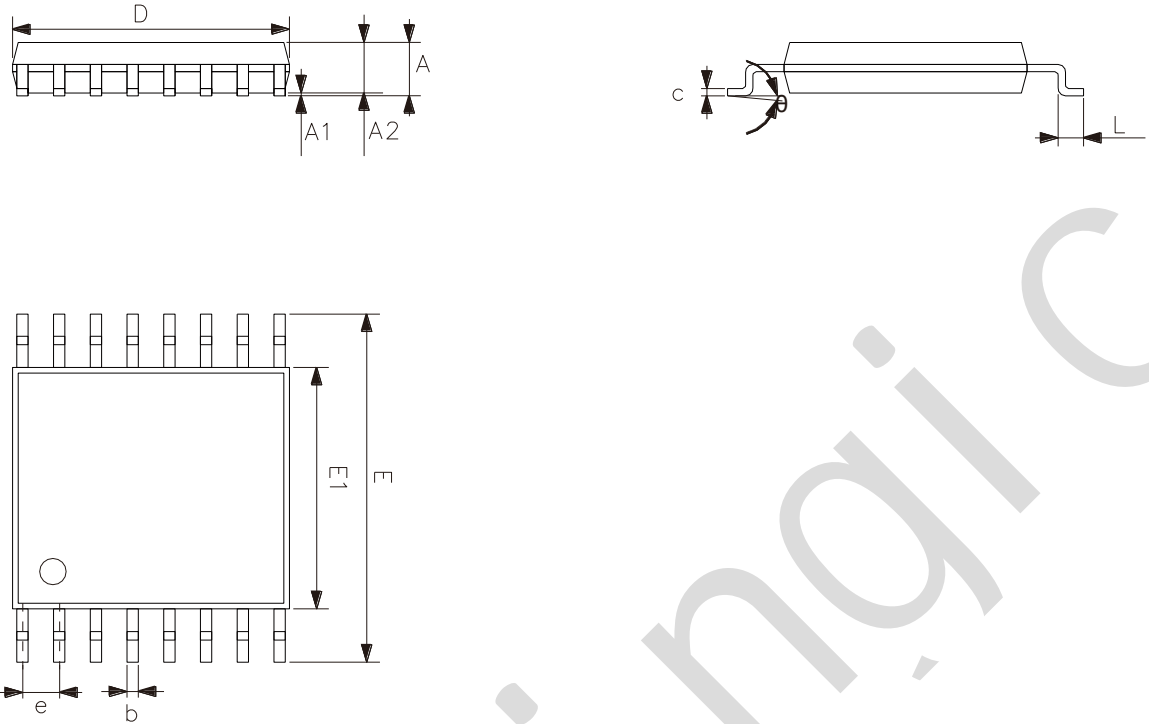
5.2、SOP16



Symbol	Dimensions (mm)	
	Min.	Max.
A	1.35	1.80
A1	0.10	0.25
A2	1.25	1.55
b	0.33	0.51
c	0.19	0.25
D	9.50	10.10
E	5.80	6.30
E1	3.70	4.10
e	1.27	
L	0.35	0.89
θ	0°	8°



5.3、TSSOP16



Symbol	Dimensions (mm)	
	Min.	Max.
A	-	1.20
A1	0.05	0.15
A2	0.80	1.05
b	0.19	0.30
c	0.09	0.20
D	4.90	5.10
E1	4.30	4.50
E	6.20	6.60
e	0.65	
L	0.45	0.75
θ	0°	8°



6、 Statements And Notes

6.1、 The name and content of Hazardous substances or Elements in the product

Part name	Hazardous substances or Elements									
	Lead and lead compounds	Mercury and mercury compounds	Cadmium and cadmium compounds	Hexavalent chromium compounds	Polybrominated biphenyls	Polybrominated biphenyl ethers	Dibutyl phthalate	Butylbenzyl phthalate	Di-2-ethylhexyl phthalate	Diisobutyl phthalate
Lead frame	○	○	○	○	○	○	○	○	○	○
Plastic resin	○	○	○	○	○	○	○	○	○	○
Chip	○	○	○	○	○	○	○	○	○	○
The lead	○	○	○	○	○	○	○	○	○	○
Plastic sheet installed	○	○	○	○	○	○	○	○	○	○
explanation	○: Indicates that the content of hazardous substances or elements in the detection limit of the following the SJ/T11363-2006 standard. ×: Indicates that the content of hazardous substances or elements exceeding the SJ/T11363-2006 Standard limit requirements.									

6.2、 Notes

We recommend you to read this chapter carefully before using this product.

The information in this chapter is provided for reference only and Lingxing disclaims any express or implied warranties, including but not limited to applicability, special application or non-infringement of third party rights.

This product is not suitable for critical equipment such as life-saving, life-sustaining or safety equipment. It is also not suitable for applications that may result in personal injury, death, or serious property or environmental damage due to product malfunction or failure. Lingxing will not be liable for any damages incurred by the customers at their own risk for such applications.

The customer is responsible for conducting all necessary tests Lingxing's application to avoid failure in the application or the application of the customer's third party users. Lingxing does not accept any liability.

The Company reserves the right to change or improve the information published in this chapter at any time. The information in this chapter are subject to change without notice. We recommend the customer to consult our sales staff before purchasing.

Please obtain related materials form Lingxing's regular channels and we are not responsible for its content if it is provided by sources other than our company.

In case of any conflict between the Chinese and English version, the version is subject to the Chinese one.

X-ON Electronics

Largest Supplier of Electrical and Electronic Components

Click to view similar products for [Flip-Flops](#) category:

Click to view products by [lingxingic](#) manufacturer:

Other Similar products are found below :

[NLV74HC74ADTR2G](#) [74F574SC](#) [NLV14013BDR2G](#) [NLV74HC74ADR2G](#) [MC10EP131MNG](#) [MC74AC74DTR2](#) [74VHC574FT\(BJ\)](#)
[HT4093ARZ](#) [SN74HC374ANSR](#) [CD4528BE](#) [CD4027BE](#) [RS74HC74XQ](#) [RS1G79XC5](#) [CD40106BM-JSM](#) [74HCT273PW-Q100J](#)
[CLVC2G74QDCURG4Q1](#) [CD4067TA24.TB](#) [CD4013SA.TR](#) [AIP74HCT14TA14.TB](#) [HSN74LVC1G14DBVR](#) [CD4013BPWRG](#)
[AiP74LVC74TA14.TB](#) [CD4013BDRG](#) [CD4528SA16.TR](#) [AIP74HC273SA.TB](#) [SN74HCS74QDYRQ1](#) [CD4013TA14.TB](#) [SN74LS107N](#)
[SN74LS374DWR](#) [SN74LVC2G14DC\(LX\)](#) [74VHCT574AFT](#) [TC4013BF\(EL,N,F\)](#) [74VHCT9541AFT](#) [74LCX374FT\(AJ\)](#)
[TC7WZ74FK,LXGJ\(CT](#) [74LCX374FT](#) [74VHC174FT\(TB,BJ\)](#) [TC7WH74FK,LJ](#) [SN74HC374PW\(LX\)](#) [SN74LVC1G17DC\(LX\)](#)
[SN74HC174DR\(LX\)](#) [SN74HC112N\(LX\)](#) [SN74HC74DR\(LX\)](#) [CD40174BE\(LX\)](#) [CD40175BE\(LX\)](#) [SN74LS374N](#) [SN74HC173N](#)
[SN74HC107DR\(LX\)](#) [SN74HC107N\(LX\)](#) [SN74LS174DR\(LX\)](#)