

# Moku:Pro

## *Specifications*



# Table of Contents

<b>Moku:Pro Hardware</b>	<b>4</b>
Specifications .....	4
Analog I/O.....	4
Clock reference.....	5
General characteristics .....	6
General connectivity.....	7
Safety Information.....	8
Hardware measurements.....	9
ADC input noise.....	9
ADC crosstalk.....	10
Analog output noise.....	12
<b>Moku:Pro's Arbitrary Waveform Generator</b>	<b>13</b>
Description.....	13
Specifications .....	14
Common.....	14
Waveform.....	15
<b>Moku:Pro's Frequency Response Analyzer</b>	<b>16</b>
Description.....	16
Specifications .....	17
Source.....	17
Input.....	17
Measurement.....	18
Saving Data .....	18
<b>Moku:Pro's Data Logger</b>	<b>19</b>
Description.....	19
Specifications .....	20
Input.....	20
Logging .....	20
<b>Moku:Pro's Lock-In Amplifier</b>	<b>21</b>
Description.....	21
Specifications .....	22
Signal channel.....	22
External reference .....	22
Internal reference.....	23
Demodulator.....	23
Signal output.....	23
Saving data.....	24

<b>Moku:Pro's Oscilloscope</b>	<b>25</b>
Description .....	25
Specifications .....	26
Vertical characteristics .....	26
Horizontal characteristics .....	26
Trigger .....	27
Measurements .....	27
Integrated waveform synthesizer .....	28
<b>Moku:Pro's Phasemeter</b>	<b>29</b>
Description .....	29
Specifications .....	30
Inputs .....	30
Measurement .....	30
Saving Data .....	31
Synthesizer .....	31
<b>Moku:Pro's PID Controller</b>	<b>32</b>
Description .....	32
Specifications .....	33
Inputs .....	33
Controller .....	33
<b>Moku:Pro's Spectrum Analyzer</b>	<b>34</b>
Description .....	34
Specifications .....	35
Frequency .....	35
Amplitude .....	35
Synthesizer .....	36
<b>Moku:Pro's Waveform Generator</b>	<b>37</b>
Description .....	37
Common characteristics .....	38
Waveform characteristics .....	38
Modulation .....	39

# Moku:Pro Hardware

## Specifications

### Analog I/O

#### Analog inputs

Channels	4
Bandwidth (-3 dB)	300 MHz / 600 MHz switchable
Sampling rate	5 GSa/s with 1 channel, and 1.25 GSa/s with 4 channels.
Resolution	10 bits (high bandwidth) / 18 bits (low bandwidth)
Maximum voltage range	40 V <sub>pp</sub> into 1 M $\Omega$ <sup>1</sup>
Input impedance	50 $\Omega$ / 1 M $\Omega$
Input coupling	AC / DC
AC coupling corner (-3 dB)	16 kHz into 50 $\Omega$ 1.6 Hz into 1 M $\Omega$
Input referred noise	30 nV/ $\sqrt{\text{Hz}}$ @ 100 Hz
Connector	BNC

#### Analog outputs

Channels	4
Bandwidth (maximum output frequency)	500 MHz (2 V <sub>pp</sub> into 50 $\Omega$ ), 100 MHz (10 V <sub>pp</sub> into 50 $\Omega$ )
Sampling rate	1.25 GSa/s per channel
Resolution	16-bit
Voltage range	10 V <sub>pp</sub> into 50 $\Omega$
Output impedance	50 $\Omega$
Output coupling	DC
Connector	BNC

<sup>1</sup> 50  $\Omega$  frontend impedance can only support input voltages up to 4V<sub>rms</sub>.

## Clock reference

### On-board clock

Frequency	10 MHz
Stability	< 300 ppb
Speed	321.5 MHz

### 10 MHz reference input

Expected waveforms	Sine / square
Frequency	10 MHz $\pm$ 20 kHz
Input range	-6 dBm to +10 dBm
Connector	BNC

### 10 MHz reference output

Waveform type	Square
Output frequency	10 MHz
Output level	1.4 V <sub>PP</sub>
Connector	BNC

# General characteristics

## General and environmental characteristics

---

Power consumption	115 W typical
Power voltage range	100 - 240 V <sup>~</sup> +/- 10%, 50/60 Hz The equipment shall be plugged into a socket outlet with reliable protective earthing contact.
Temperature	Operating: 0 to +45 °C Non-operating: -10 to +60 °C Do not obstruct the cooling fan outlets. 20 cm ventilation clearance is required
Humidity	R.H. 5% to 95% noncondensing
Operating Altitude	Up to 10,000 feet (3000m)
Other requirements	Intended for indoor use only
Pollution degree	2
Overvoltage category	OVC II

---

## Electromagnetic compliance

---



## Physical characteristics

---

Dimensions	Width: 44 cm (17.30 in.) Depth: 33 cm (13.00 in.) Height: 7 cm (2.80 in.)
Weight	6.7 kg (14.77 lbs)

---

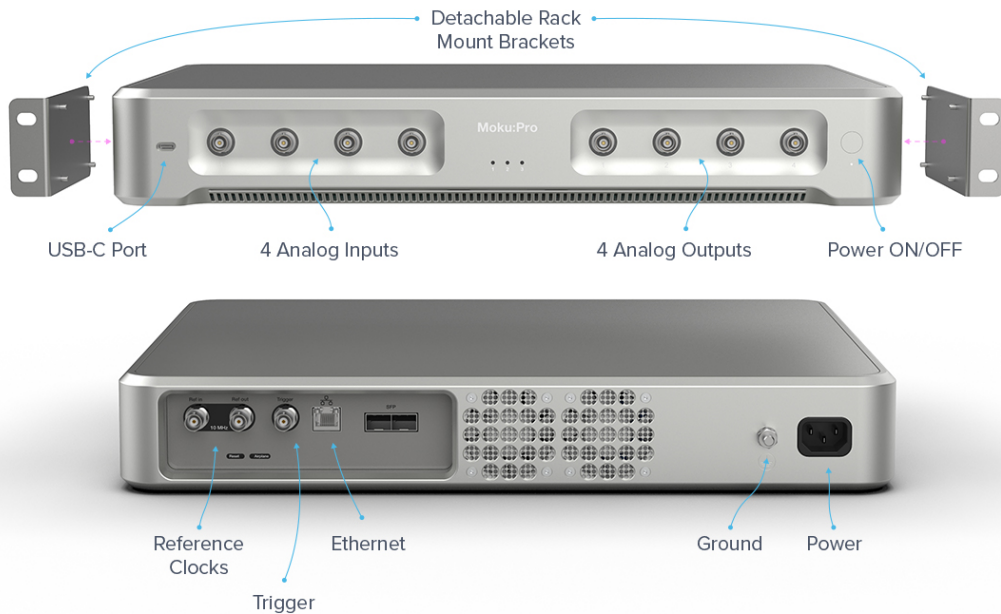
# General connectivity

## Connectivity

Analog inputs	4 x BNC
Analog outputs	4 x BNC
Network	Ethernet (10/100/1000 Base-T) Wi-Fi 802.11 b/g/n
USB data port	Type-C // For connecting the iPad to the Moku:Pro via USB
External trigger input	BNC
10 MHz clock reference input	BNC
10 MHz clock reference output	BNC

## Available accessories

Rack mount brackets	x 2 // secured by 4 screws each (supplied)
---------------------	--



# Safety Information

## Safety

---

Manufacturer	Liquid Instruments Pty Ltd, 243 Northbourne Avenue, Suite 2, Lyneham, ACT 2602, Australia
Cleaning	Clean loose dust on exterior with lint free, dry cloth
Impairment	If the equipment is used in a manner not specified by the manufacturer, the protection provided by the equipment may be impaired.
Power cable	Do not use a mains power supply cord other than the one provided by the manufacturer. Please contact the manufacturer/representative office if a replacement mains power supply cord is needed.

---

## Symbols



---

Caution : consult accompanying documents



---

Warning : risk of electric shock

---

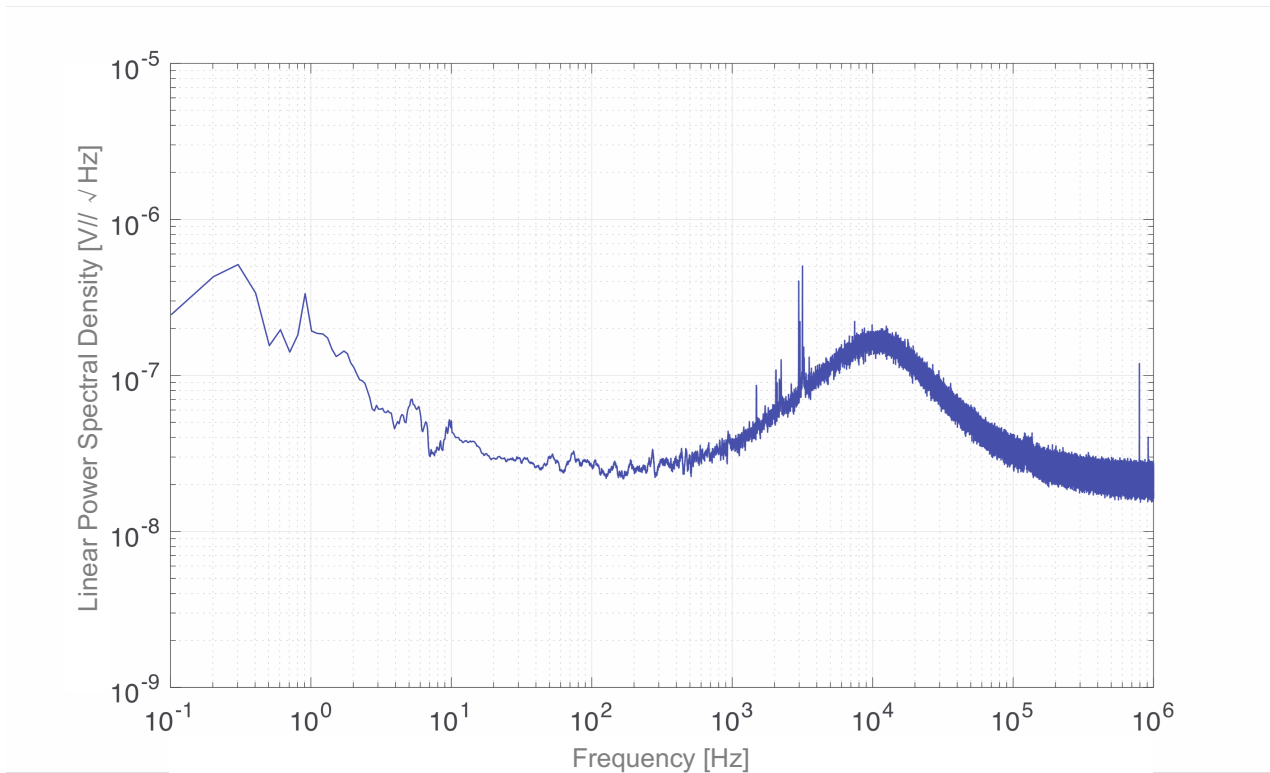


# Hardware measurements

## ADC input noise

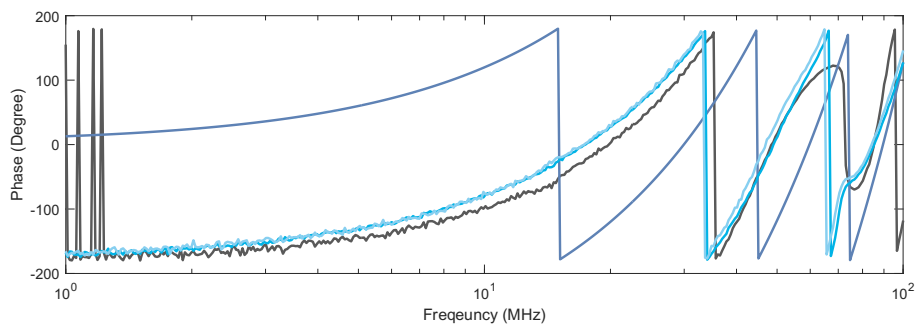
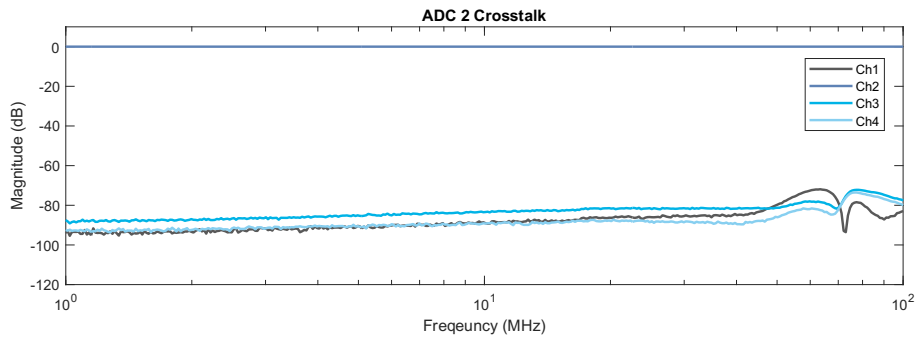
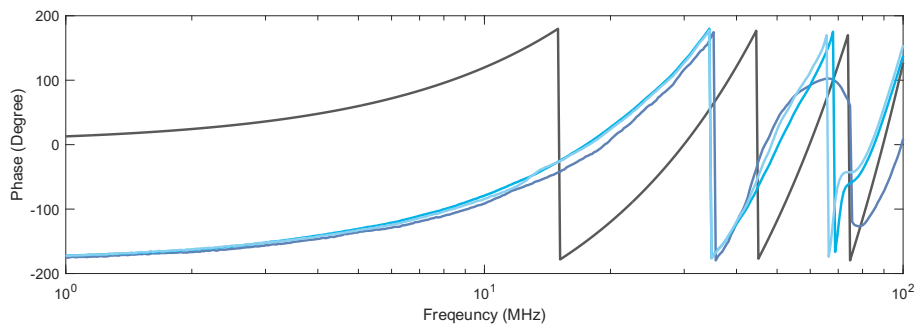
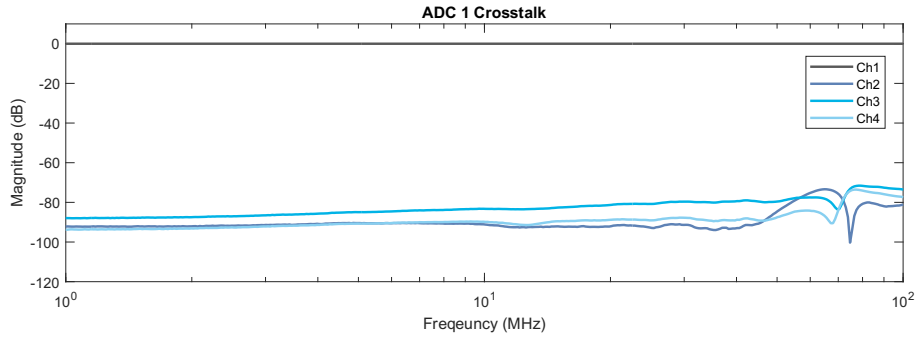
1 M $\Omega$  // DC coupled // 0 dB attenuation

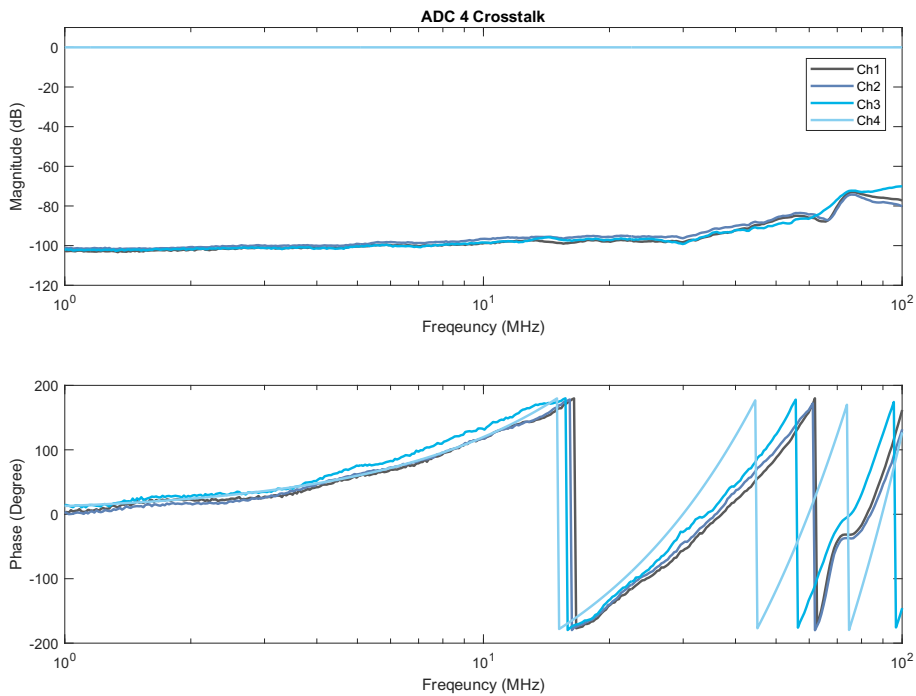
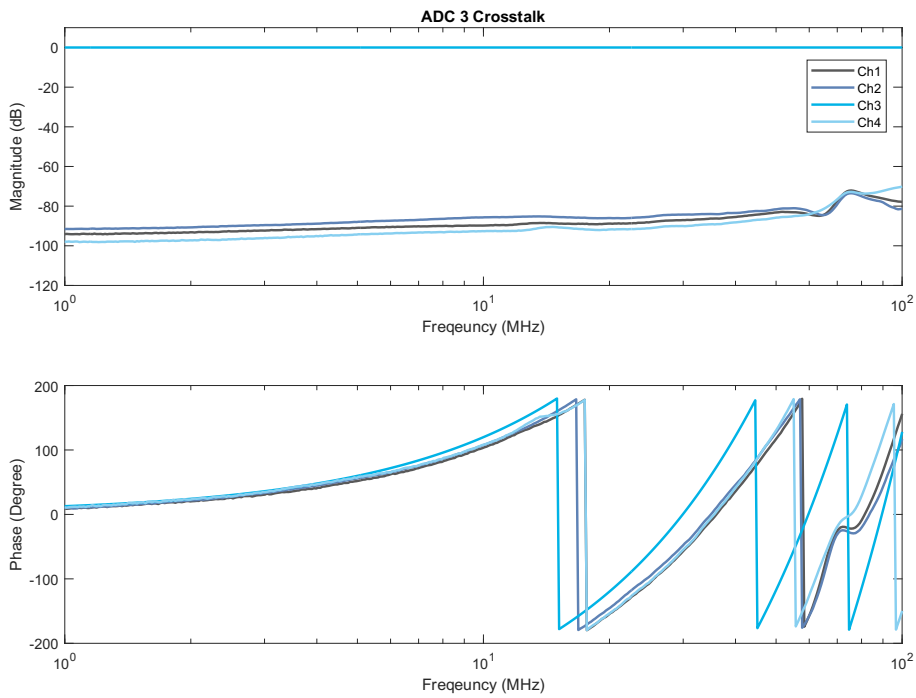
Acquisition mode: Precision // Sampling rate: 2.5 MSa/s



# ADC crosstalk

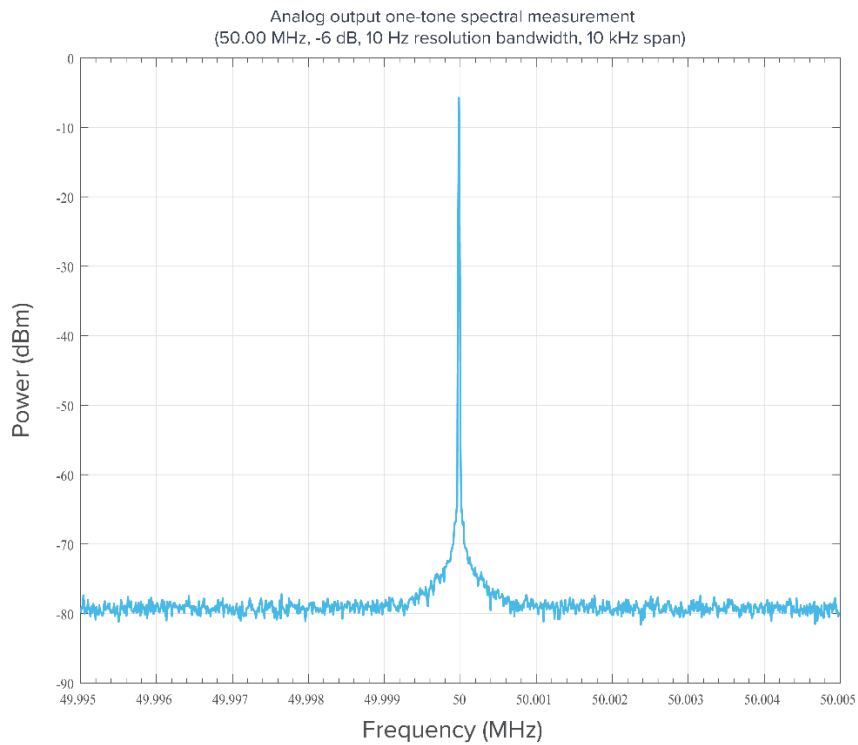
50  $\Omega$  // DC coupled // 0 dB attenuation



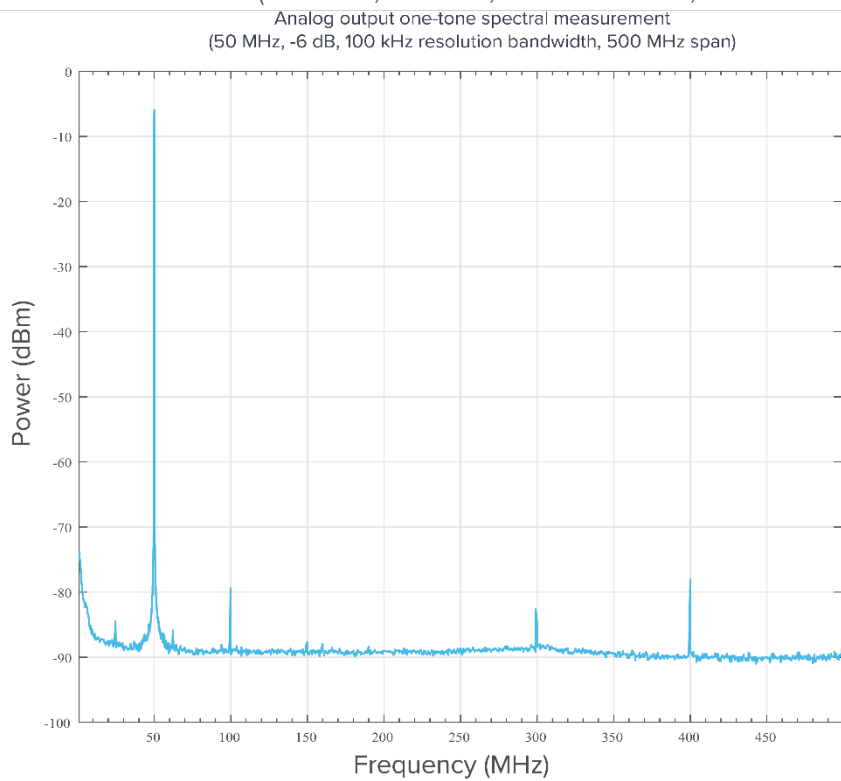


# Analog output noise

One-tone spectral measurement (50 MHz, -6 dBm, 10 Hz RBW, 10 kHz span)



One-tone spectral measurement (50 MHz, -6 dBm, 100 kHz RBW, 500 MHz span)

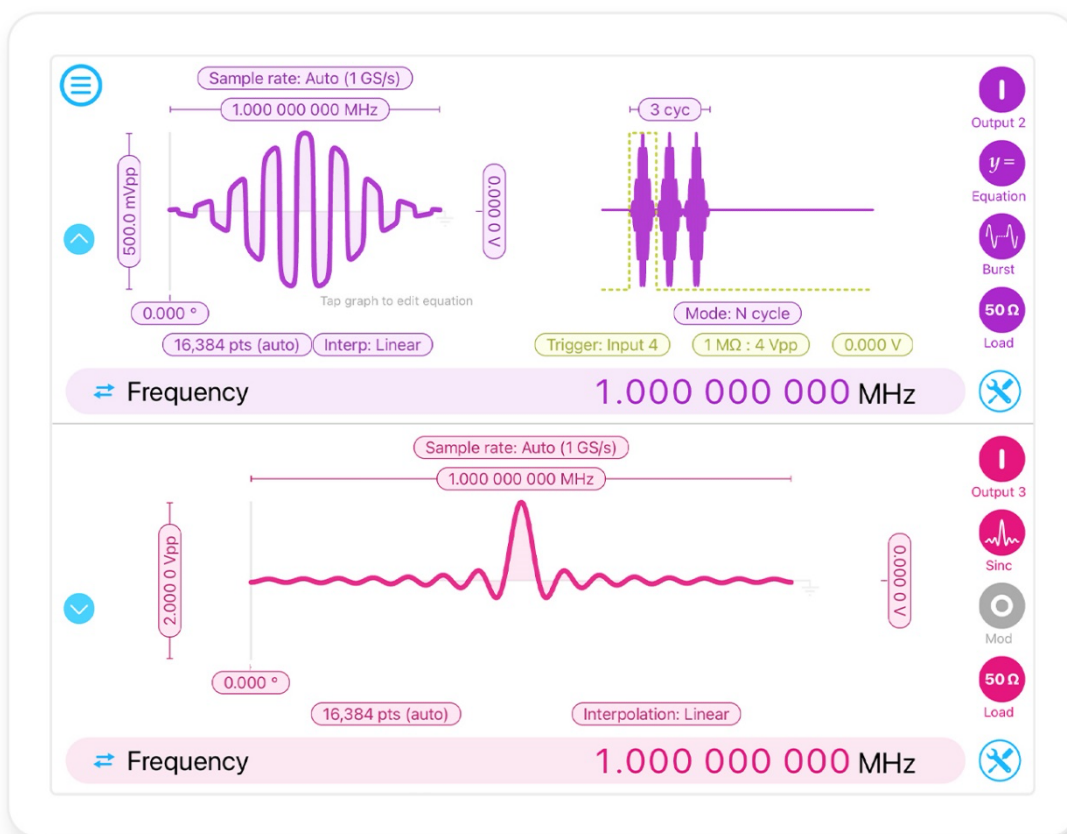




# Moku:Pro's Arbitrary Waveform Generator

## Description

Moku:Pro's 4 channel Arbitrary Waveform Generator can generate 4 custom waveforms with up to 65,536 points and sample rates ranging from 312.5 MSa/s to 1.25 GSa/s. Waveforms can be loaded from a file or input as a piece-wise mathematical function with up to 32 segments, enabling you to generate truly arbitrary waveforms. In burst mode, waveform generation can be triggered from input channels with start or n cycle modes. In pulsed mode, waveforms can be output with more than 250,000 cycles of dead time between pulses.



## Features

- Four independent AWG channels with up to 500 MHz bandwidth
- Choose between pre-set waveforms, load points from a file, or input an equation directly
- Phase synchronization output between the four channels
- Configure pulsed output with up to 250,000 cycles of dead time between pulses



# Specifications

## Common

### Overview

Channels	4
Sampling rate	312.5 MSa/s, 625 MSa/s, 1.25 GSa/s
Source impedance	50 $\Omega$
Output load	50 $\Omega$ / 1 M $\Omega$
Waveforms	Sine, Gaussian, Exponential Fall, Exponential Rise, Sinc, Equation, Custom (from file)

### Amplitude

Output voltage range	2 Vpp @ 625 MSa/s and 1.25 GSa/s 10 Vpp @ 312.5 MSa/s
Resolution	100 $\mu$ V

### DC offset

Range (peak AC + DC)	$\pm$ 10 V into 50 $\Omega$ $\pm$ 20 V into high-impedance
Resolution	100 $\mu$ V

### Phase offset

Range	0° to 360°
Resolution	0.001°



## Waveform

### Custom

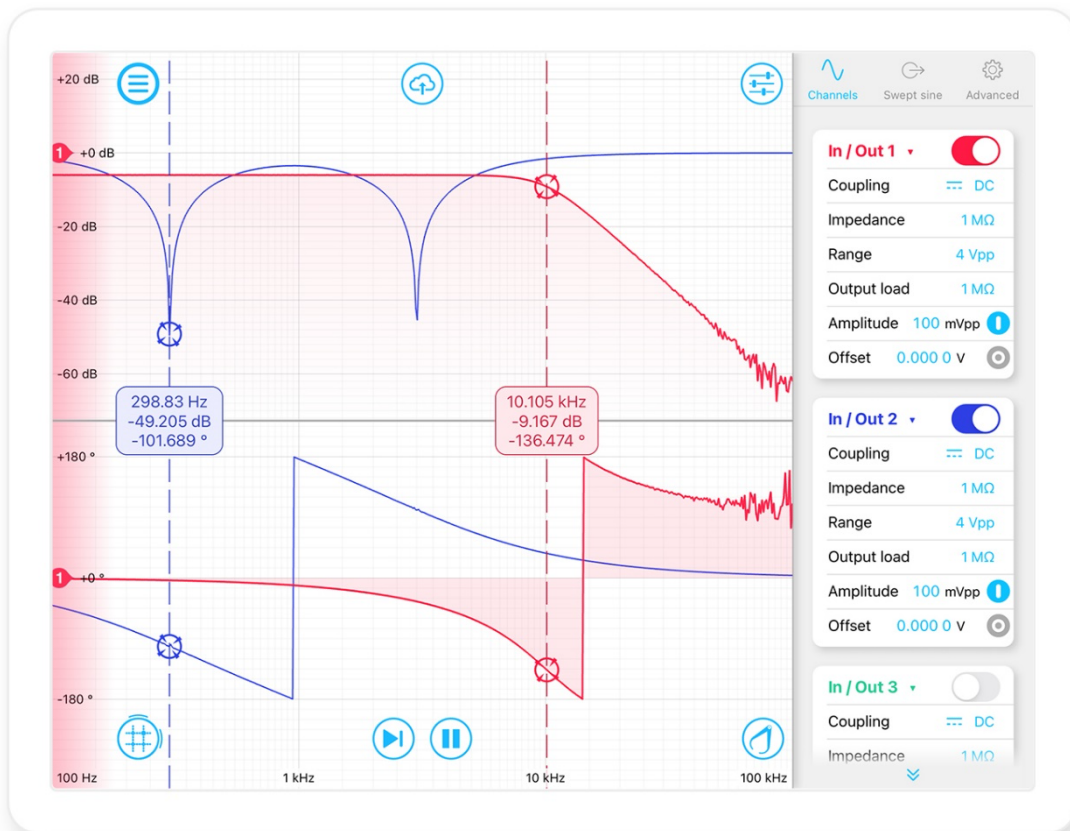
Maximum output rate	312.5 MSa/s	65,536 points
	625 MSa/s	32,768 points
	1.25 GSa/s	16,384 points
Text file type	Clipboard, My Files	
File import options	None, Linear	
Interpolation	2 ns	
Minimum edge time	≤ 10% for edge times between 4 ns and 8 ns	
	≤ 2% for edge times greater than 8 ns	
Period range	4 ns to 1 ks	



# Moku:Pro's Frequency Response Analyzer

## Description

Moku:Pro's Frequency Response Analyzer enables you to measure the frequency response of a system in both magnitude and phase using a swept sine output from 10 mHz to 300 MHz. It has a noise floor of -135 dBm across the entire frequency range. Moku:Pro is equipped with four inputs and four outputs ports, enabling differential or ratio metric measurements. Select from between 32 and 512 points per sweep and configure settling and averaging times to balance total sweep duration and signal-to-noise ratio.



## Features

- Linear or logarithmic swept sine output.
- Math channel to add, subtract, multiply or divide response functions as they are acquired.
- Measure key metrics with cursors and markers.
- Configurable measurement averaging and settling times
- Demodulate up to 15th harmonic





# Specifications

## Source

### Source

Waveform	Sine
Frequency range	10 mHz to 300 MHz
Sweep type	Linear / Logarithmic
Sweep points	32, 64, 128, 256, 512
Output amplitude range	$\pm 0.5$ mV to $\pm 10$ V into 50 $\Omega$
Output load	50 $\Omega$ / 1 M $\Omega$
Source impedance	50 $\Omega$

## Input

### Input characteristics

Input impedance	50 $\Omega$ / 1 M $\Omega$
Input coupling	AC / DC
Input attenuation	0 dB / 20 dB / 40 dB
Input voltage range	0.4 V <sub>pp</sub> into 50 $\Omega$ with 0 dB attenuation 4 V <sub>pp</sub> into 50 $\Omega$ with 20 dB attenuation 40 V <sub>pp</sub> into 50 $\Omega$ with 40 dB attenuation
Input noise	30 nV/ $\sqrt{\text{Hz}}$ @ 100 Hz
Crosstalk	< 60 dB



## Measurement

### Measurement characteristics

Settling time	Min.	Greater of 1 $\mu$ s or 1 cycle
	Max.	10.0 seconds
Averaging time	Min.	Greater of 1 $\mu$ s or 1 cycle
	Max.	10.0 seconds
Normalization	Normalizes magnitude and phase using a reference sweep <sup>2</sup>	
Normalized gain error	<0.05 dB	
Normalized phase error	< 0.5°	

## Saving Data

### Saving data

File formats	Plain text: records data using a standard *.csv format
	Binary: records data using MathWorks' *.mat format which can be opened using MATLAB
Export modes	Dropbox, E-mail and iCloud, My Files (iOS 11)

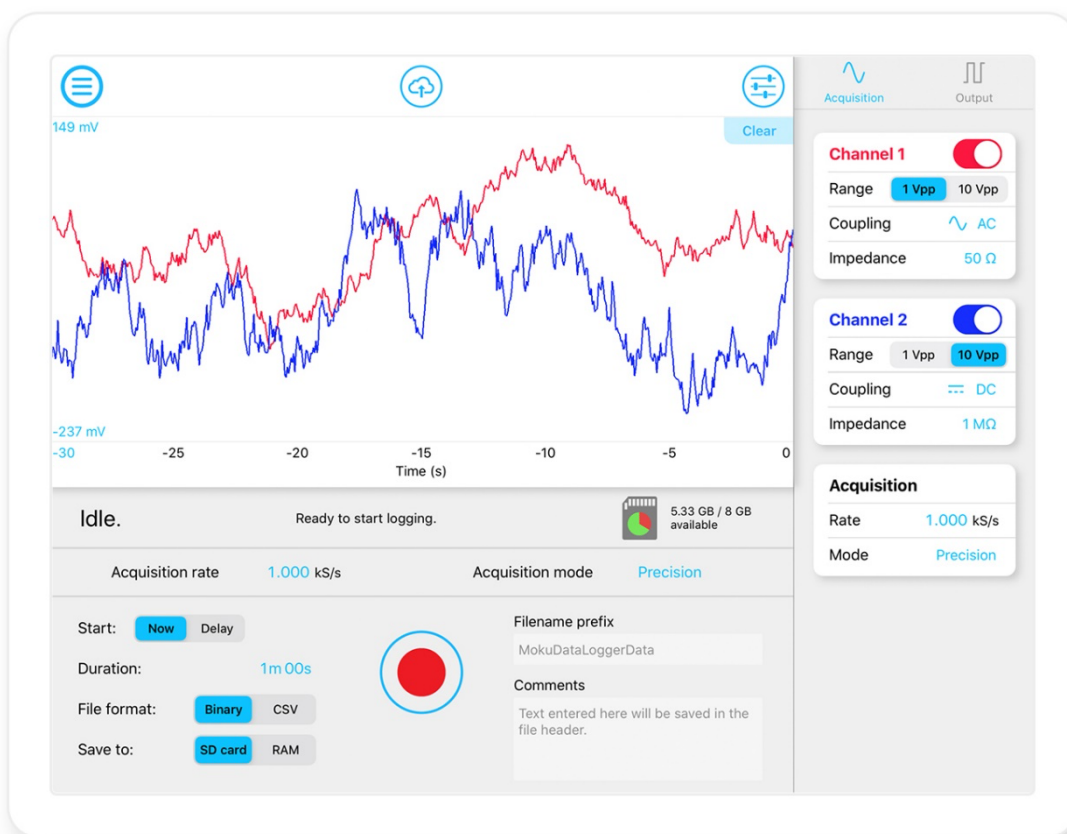
<sup>2</sup> The normalization feature can be used to isolate the magnitude and phase response of the system under test by compensating for deviations in magnitude and phase caused by delays (e.g., caused by cables) and the frequency response of the Moku:Pro's analog frontend.



# Moku:Pro's Data Logger

## Description

Moku:Pro's Data Logger enables you to log data to its 120 GB internal solid-state drive with sampling rates of up to 10 MSa/s. Four inputs are equipped with dual 10-bit and 18-bit ADCs. With blended ADC technology, input noise is down to  $30 \text{ nV} \sqrt{\text{Hz}}$  at 100 Hz, providing ultra-low noise data logging from acoustic to RF frequencies. Moku:Pro is also equipped with a 10 MHz clock synchronization I/O, and four 500 MHz outputs, allowing flexible integration with other electronics.



## Features

- Log voltage data on four independent channels to its 120 GB SSD.
- Built-in four-channel 500 MHz waveform generator.
- 10 MHz clock synchronization ports.
- Easily export data to computer, Dropbox, and other cloud-based services.
- Schedule your log to start with a delay of up to 10 days.



# Specifications

## Input

### Voltage

Input voltage range	0.4 V <sub>PP</sub> into 50 Ω with 0 dB attenuation 4 V <sub>PP</sub> into 50 Ω with 20 dB attenuation 40 V <sub>PP</sub> into 50 Ω with 40 dB attenuation
Input impedance	50 Ω / 1 MΩ
Input coupling	AC / DC

## Logging

### Acquisition

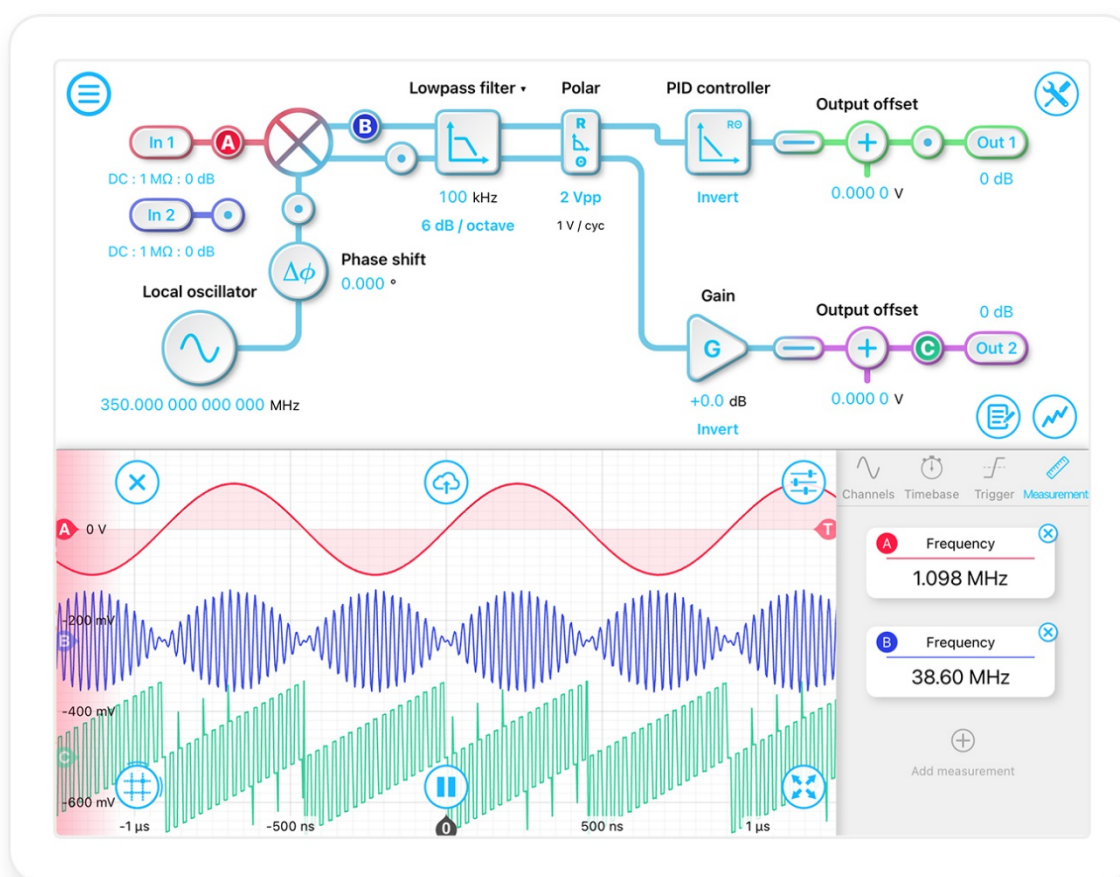
File formats	Binary; records data using a proprietary *.li format for high-speed data logging.  <b>Note:</b> data saved using the *.li format must be converted to plain text using the LI file converter available here: <a href="https://github.com/liquidinstruments/lireader">https://github.com/liquidinstruments/lireader</a>
Export modes	Dropbox, E-mail and iCloud, My Files (iOS 11)
Maximum sampling rate	10 MSa/s for 1 channel 5 MSa/s for 2 channels 2.5 MSa/s for 4 channels
Delayed log start time	Up to 240 hours
Log duration	1 second up to 240 hours



# Moku:Pro's Lock-In Amplifier

## Description

Moku:Pro's digital Lock-in Amplifier supports dual-phase demodulation (XY/R $\theta$ ) from 1 mHz to 600 MHz with more than 120 dB dynamic reserve. A PID controller can be placed after the demodulation stage for phase-locked loop applications. It also features an integrated 4-channel oscilloscope and data logger, enabling you to observe signals at up to 1.25 GSa/s and log data at up to 1 MSa/s.



## Features

- Measure signals obscured by noise with more than 120 dB dynamic reserve
- Block diagram view of the digital signal processing chain
- Built-in probe points for signal monitoring and data logging
- Internal or external demodulation modes including a PLL (phase-locked loop)
- Toggle between rectangular (X/Y mode) or polar coordinates (R/ $\theta$  mode)
- Built-in PID Controller



# Specifications

## Signal channel

### Signal input

Input coupling	AC / DC
Input impedance	50 $\Omega$ / 1 M $\Omega$
AC coupling corner (-3 dB)	16 kHz into 50 $\Omega$ 1.6 Hz into 1 M $\Omega$
Frequency range	DC to 600 MHz
Input attenuation	0 dB / 20 dB / 40 dB
Input range	0.4 V <sub>pp</sub> with 0 dB input attenuation 4 V <sub>pp</sub> with 20 dB input attenuation 40 V <sub>pp</sub> with 40 dB input attenuation
Input noise	< 30 nV/ $\sqrt{\text{Hz}}$ above 10 Hz at 400 mV <sub>pp</sub> input range < 200 nV/ $\sqrt{\text{Hz}}$ above 10 kHz at 400 mV <sub>pp</sub> input range < 30 nV/ $\sqrt{\text{Hz}}$ above 1 MHz at 400 mV <sub>pp</sub> input range

## External reference

### Reference input

Input coupling	AC / DC
Input impedance	50 $\Omega$ / 1 M $\Omega$
Frequency range	DC to 600 MHz
Input attenuation	0 dB / 20 dB / 40 dB
External reference modes	Direct, phase-locked
Direct demodulation	$X = R\cos\theta$

### Phase-locked loop

PLL frequency range	1 MHz to 600 MHz (auto) 100 Hz to 600 MHz (manual)
PLL tracking bandwidth	10 kHz, 2.5 kHz, 600 Hz, 150 Hz, 40 Hz, 10 Hz
Phase range	0 to 360°
Phase resolution	0.001°
Demodulation	XY / R $\theta$



## Internal reference

### Internal reference waveforms

Waveform	Sine
Frequency range	1 mHz to 600 MHz
Frequency resolution	1 $\mu$ Hz
Phase range	0 to 360°
Phase resolution	0.001°
Demodulation	XY / R $\theta$

### Internal reference auxiliary output

Amplitude range	1 mV <sub>pp</sub> to 10 V <sub>pp</sub> into 50 $\Omega$
Amplitude resolution	1 mV
Offset range	$\pm 1$ V
Output limit (AC + DC)	$\pm 1$ V with 0 dB $\pm 5$ V with 14 dB
Amplitude accuracy	1%
Output impedance	50 $\Omega$
Can be phase-locked to external 10 MHz timebase?	Yes

## Demodulator

### Demodulator characteristics

Sources	Internal reference oscillator, external direct, external with phase-locked loop
Types	Internal: XY / R $\theta$ External direct: $X = R\cos\theta$ External with PLL: XY / R $\theta$
Filter mode	Low-pass filter
Filter cut-off frequency (-3dB)	700 mHz to 12.4 MHz
Filter time-constant	12.8 nanoseconds to 0.215 seconds
Filter slope	6, 12, 18, 24 dB per octave
Phase shift precision	0.001°
Dynamic reserve	> 120 dB

## Signal output

### Output characteristics

Modes	XY (cartesian mode); R $\theta$ (polar mode); Auxiliary Oscillator
Number of output channels	2



## Output characteristics

Channel 1 output	X/R
Channel 2 output	Y/ $\theta$ , auxiliary oscillator, or local oscillator
Output gain mode	Direct, PID <sup>3</sup>
Gain range (direct)	-80 dB to 160 dB
Phase scale (R $\theta$ mode)	1 V/cycle
Output voltage offset	$\pm 1$ V into 50 $\Omega$
Output voltage range (AC + DC)	$\pm 10$ V into 50 $\Omega$
Output impedance	50 $\Omega$
D/A conversion	16-bits, 1.25 GSa/s, 500 MHz analog bandwidth

## PID controller

Controller frequency range	DC to 40 MHz
Proportional gain	$\pm 120$ dB (XY mode), $\pm 60$ dB (R $\theta$ mode)
Integrator crossover frequency	3.125 Hz to 312.5 kHz
Int. saturation crossover frequency	3.125 Hz to 312.5 kHz
Integrator gain range	Proportional gain to +120 dB (XY mode), +60 dB (R $\theta$ mode)
Differentiator crossover frequency	31.25 Hz to 3.125 MHz
Diff. saturation crossover frequency	31.25 Hz to 3.125 MHz
Differentiator gain range	Proportional gain to +120 dB (XY mode), +60 dB (R $\theta$ mode)

## Saving data

### Saving data

File formats	Binary: records data using a proprietary LI format.  <b>Note:</b> data saved using the LI format must be converted to plain text using the LI file converter available here: <a href="https://www.liquidinstruments.com/resources/software-utilities/li-file-converter/">https://www.liquidinstruments.com/resources/software-utilities/li-file-converter/</a>
Maximum sampling rate	1 MSa/s for 1 channel 500 kSa/s for 2+ channels
Export modes	Dropbox, E-mail and iCloud, My Files (iOS 11 or later)
Delayed log start time	Up to 240 hours
Log duration	1 second up to 240 hours

<sup>3</sup> Only one output may have a PID controller enabled at a time

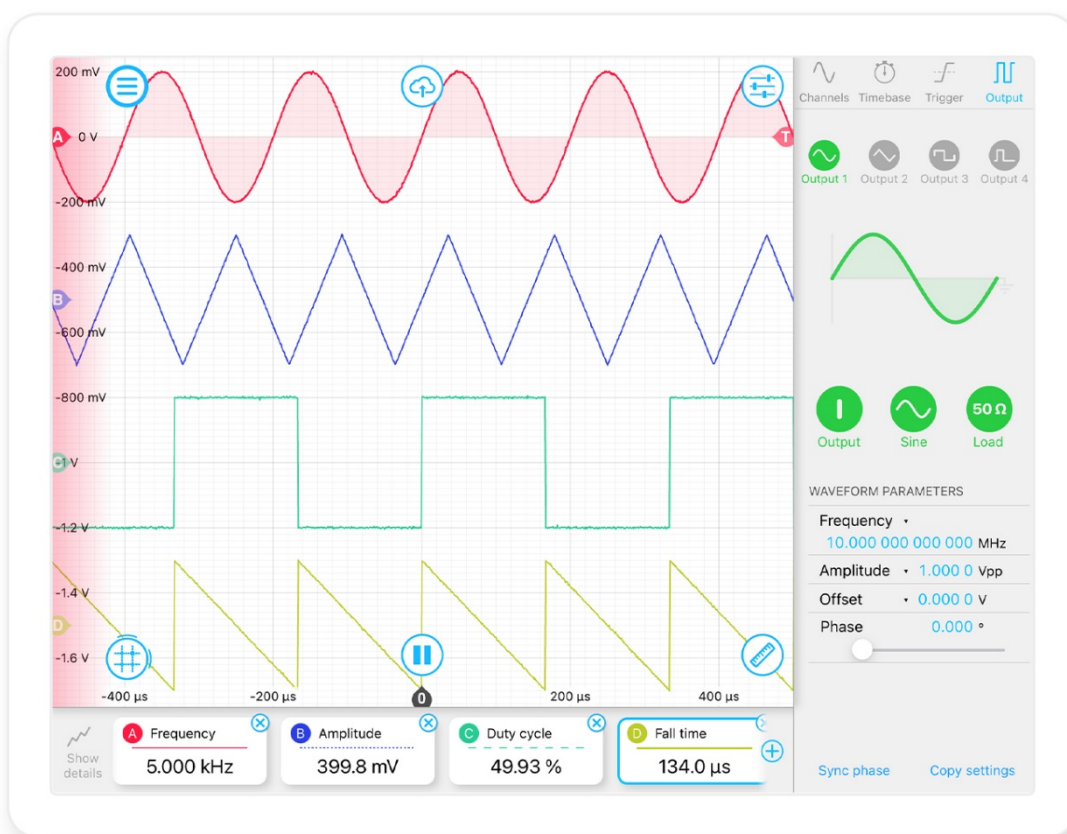




# Moku:Pro's Oscilloscope

## Description

Moku:Pro's Oscilloscope features four highspeed, ultra-low noise input channels with 600 MHz analog bandwidth. An innovative blended ADC technology combines the information from 10 bit and 18 bit ADCs to cover a broad spectrum, providing class-leading input noise performance at  $30\text{nV}/\sqrt{\text{Hz}}$  @ 100Hz with large dynamic range. The built-in four-channel waveform generators are capable of producing waveforms with a bandwidth of up to 500 MHz.



## Features

- Four analog inputs with 600 MHz bandwidth.
- Exceptional low-frequency noise performance:  $30\text{ nV}/\sqrt{\text{Hz}}$  @ 100 Hz
- Dual-ADC design with blended ADC technology
- Ultra stable 0.3 ppm onboard oscillator with 10 MHz synchronization in and out
- Integrated high-speed waveform generator channels with analog bandwidths up to 500 MHz



# Specifications

## Vertical characteristics

### Voltage

Channels	4
Input coupling	AC / DC
Input impedance	50 $\Omega$ / 1 M $\Omega$
Input bandwidth (-3 dB)	300 MHz / 600 MHz switchable
Input voltage range	40 V <sub>pp</sub>
Input voltage noise	< 30 nV/ $\sqrt{\text{Hz}}$ above 10 Hz at 400 mV <sub>pp</sub> input range < 200 nV/ $\sqrt{\text{Hz}}$ above 1 kHz at 400 mV <sub>pp</sub> input range < 20 nV/ $\sqrt{\text{Hz}}$ above 100 kHz at 400 V <sub>pp</sub> input range
Channel-to-channel isolation	> 40 dB

## Horizontal characteristics

### Time

Time mode	Normal, Roll
Horizontal span	4 ns to 200 s

### Acquisition

Acquisition mode	Normal, Precision <sup>4</sup>
Maximum sampling rate	5 GSa/s
Averaging (linear)	Off, 2 to 100 waveforms
Persistence	Off, 100 ms to 10 s, infinite
Interpolation	Linear, SinX/X, Gaussian

<sup>4</sup> Precision mode samples the waveform at the full rate and applies a finite impulse response (FIR) low-pass filter to attenuate noise above the usable bandwidth of the measurement sampling rate and prevent aliasing.



## Trigger

### Trigger

Trigger modes	Auto:	Triggers automatically after timeout (1 second if previously triggered, 0.05 seconds otherwise)
	Normal:	Triggers only on trigger event
	Single:	Triggers once on a trigger event. Press the 'play' button to re-trigger
Trigger sources	Input 1, Input 2, Input 3, Input 4, Output 1, Output 2, Output 3, Output 4, External	
Nth event	Trigger on the 1 <sup>st</sup> to 65,535 <sup>th</sup> event	
Holdoff	10 femtosecond to 10 seconds	
Trigger types	Edge:	Rising edge, falling edge, both edges
	Pulse:	Positive / negative polarity <ul style="list-style-type: none"><li>10.0 seconds &gt; <b>pulse width</b> &gt; 3.2 nanoseconds</li></ul>

### Trigger sensitivity

Sensitivity modes	Auto:	Automatically configures trigger sensitivity based on horizontal and vertical scales Select <i>Noise Reject</i> or high-frequency <i>HF Reject</i> options
	Manual:	Manually configure trigger sensitivity
Manual modes	Relative, Absolute	
Hysteresis	Relative:	0.01 div to 5.00 div
	Absolute:	100 $\mu$ V to 1.00 V

## Measurements

### Measurements

Time measurements	Frequency, period, duty cycle, positive pulse width, negative pulse width, rise time, fall time, rise rate, fall rate
Amplitude measurements	Peak-to-peak, amplitude, maximum, minimum, mean, cycle mean, RMS, cycle RMS, standard deviation, high-level, low-level, overshoot, undershoot
Math	Add, subtract, multiply, divide, XY mode, integrate, differentiate, FFT, min hold, max hold, arbitrary equation mode (using equation editor)
Visualisations	Histogram, time trend



## Cursors

Maximum voltage cursors	5 per channel
Maximum time cursors	5 per channel
Voltage cursor options	Manual, track mean, track maximum, track minimum, maximum hold, minimum hold
User defined reference	A single cursor can be set as a reference for differential measurements using all other active cursors

## Integrated waveform synthesizer

### Synthesizer

Channels	4
Output impedance	50 $\Omega$
Waveforms <sup>5</sup>	Sine, Square, Ramp, Pulse, DC
Output frequency range	1 mHz to 500 MHz
Output voltage range	$\pm 5$ V into 50 $\Omega$

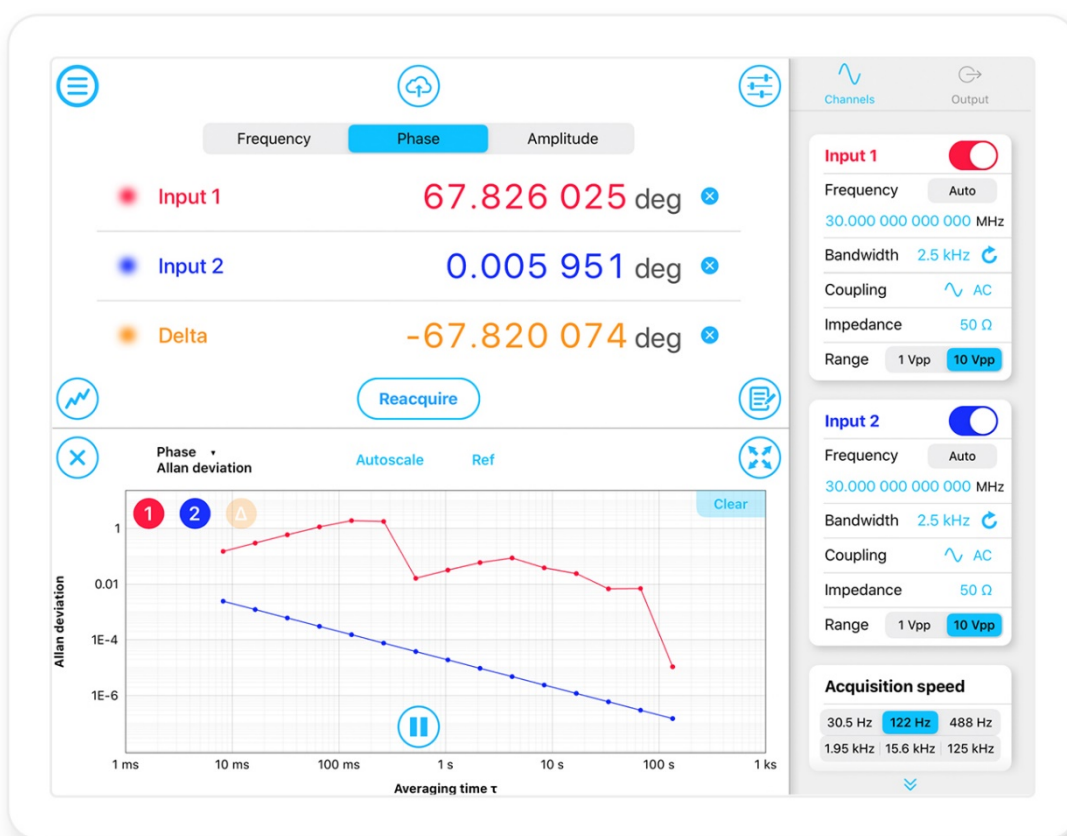
<sup>5</sup> Modulation not available for waveforms synthesized using the oscilloscope instrument.



# Moku:Pro's Phasemeter

## Description

Moku:Pro's Phasemeter measures phase (relative to a reference clock) of up to four input signals with better than  $6 \mu\text{radian}$  precision from 1 kHz up to 300 MHz. Based on a digitally implemented phase-locked loop architecture, Moku:Pro's Phasemeter provides exceptional dynamic range, zero deadtime, and measurement precision that exceeds the performance of conventional lock-in amplifiers and frequency counters.



## Features

- Four independent phasemeter channels with output options that track and record the phase, frequency, and amplitude of two independent signals.
- Phase-locked output option enables you to generate sine waves that are phase locked to the inputs.
- Observe measurement data in the frequency domain using the Phasemeter's integrated spectral analysis toolkit.
- Phase-locked loop tracking bandwidths from 10 Hz up to 10 kHz.



# Specifications

## Inputs

### Input characteristics

Input frequency range	1 kHz to 300 MHz
Input voltage range	0.4 V <sub>pp</sub> with 0 dB input attenuation 4 V <sub>pp</sub> with 20 dB input attenuation 40 V <sub>pp</sub> with 40 dB input attenuation
Input impedance	50 Ω / 1 MΩ
Input coupling	AC / DC

## Measurement

### Measurement characteristics

Frequency set-point precision	1 μHz
Modes of operation	Auto-acquire      Automatically determines input frequency for signals above 1 MHz Manual              Initializes the phasemeter to a specific frequency
Tracking bandwidth	10 Hz / 40 Hz / 150 Hz / 600 Hz / 2.5 kHz / 10 kHz (user selectable)

### Data visualisation

Visualisations	Timeseries, Power Spectral Density, Amplitude Spectral Density, Coherence, Rayleigh Spectrum, Allan Deviation
----------------	---



## Saving Data

### Saving data

Logging rates	30 Sa/s, 120 Sa/s, 477 Sa/s, 1.9 kSa/s, 15.3 kSa/s, 122 kSa/s
File format	Binary: records data using a proprietary LI format for high-speed data logging.  <b>Note:</b> data saved using the LI format must be converted to plain text using the LI file converter available here: <a href="https://github.com/liquidinstruments/lireader">https://github.com/liquidinstruments/lireader</a>
Export modes	Dropbox, E-mail and iCloud, My Files (iOS 11)
Delayed log start time	Up to 240 hours
Log duration	1 second up to 240 hours

## Synthesizer

### Synthesizer<sup>6</sup>

Channels	4
Output impedance	50 $\Omega$
Waveform shape	Sine
Output modes	Manual, phase-locked to input signal
Sampling rate	1.25 GSa/s per channel
Voltage range	$\pm 10$ V into 50 $\Omega$

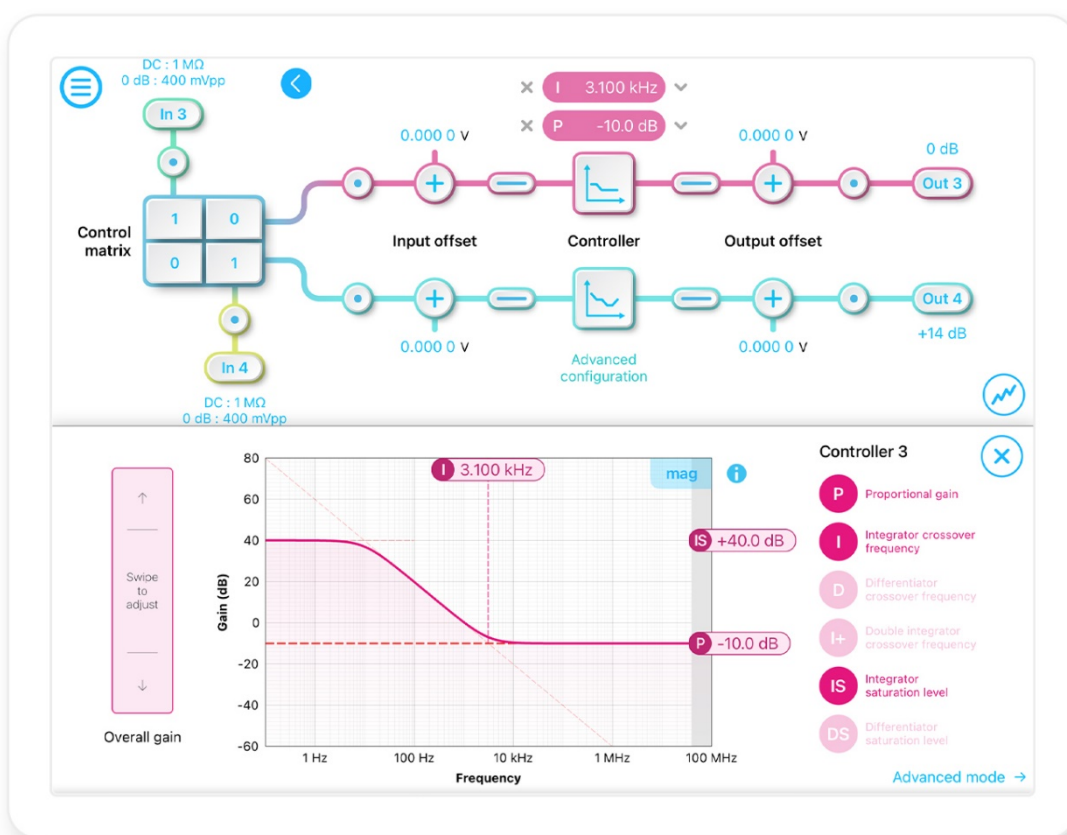
<sup>6</sup> Where not stated, the phasemeter's synthesizer specifications match those of the Moku:WaveformGenerator instrument.



# Moku:Pro's PID Controller

## Description

Moku:Pro's PID Controller features four fully configurable PID controllers with sub-microsecond latency. This enables them to be used in applications requiring both low and high feedback bandwidths such as laser temperature and current stabilization. The PID Controller can also be used as a lead-lag compensator by saturating the integral and differential controllers with independent gain settings.



## Features

- 4 input channels, 4 output channels, and 4 independent PID controllers with control matrix for MIMO
- Design your control system's frequency response using the interactive Bode plot in realtime
- Block diagram view of the digital signal processing with built-in probe points in signal processing chain
- Advanced multi-section PID builder with single or double integrators and differentiators with low- and high-frequency gain saturation
- Integrated probe points for signal monitoring





# Specifications

## Inputs

### Input characteristics

Channels	4
Input control matrix coefficients (linear gain)	-20 to +20
Input impedance	50 $\Omega$ / 1 M $\Omega$
Input coupling	AC / DC
Input attenuation	0 dB / 20 dB / 40 dB
Input voltage range	0.4 V <sub>pp</sub> into 50 $\Omega$ with 0 dB attenuation 4 V <sub>pp</sub> into 50 $\Omega$ with 20 dB attenuation 40 V <sub>pp</sub> into 50 $\Omega$ with 40 dB attenuation

## Controller

### General characteristics

Gain profiles	Proportional (P), integral (I), differential (D), double-integral (I+), integral saturation (IS), differential saturation (DS)
Maximum bandwidth	150 kHz with a phase delay of 30°
Input / output offset range	$\pm 1$ V
Offset precision	100 $\mu$ V

### Gain characteristics

Gain profiles	Proportional (P), integral (I), differential (D), double-integral (I+), integral saturation (IS), differential saturation (DS)
Controller frequency range	DC to 40 MHz
Input / output offset range	$\pm 1$ V
Offset precision	100 $\mu$ V
Proportional gain	$\pm 60$ dB
Integrator crossover frequency	3.125 Hz to 312.5 kHz
Double integrator crossover frequency	3.125 Hz to integrator crossover frequency
Integral saturation level	Between proportional gain and +60 dB The integrator saturation crossover frequency cannot be lower than 3.125 Hz
Differentiator crossover frequency	31.25 Hz to 3.125 MHz
Differentiator saturation level	Between proportional gain and +60 dB The differentiator saturation crossover frequency cannot be higher than 3.1 MHz



# Moku:Pro's Spectrum Analyzer

## Description

Moku:Pro's Spectrum Analyzer allows you to observe input signals in the frequency domain between DC and 300 MHz with an ultra-low noise floor. View four channels simultaneously with a resolution bandwidth as low as 2.2 Hz and a minimum span of 100 Hz. The Spectrum Analyzer also features four 500 MHz sinewave generators.



## Features

- Display and record power spectra or power spectral densities in the frequency domain from DC to 300 MHz
- Generate four sine waves up to 500 MHz using Moku:Pro's built-in analog outputs
- Quickly measure important metrics by dragging measurement cursors onto features of interest using the iPad's multi-touch interface
- Live measurement functions: peak level, peak frequency, noise level, peak SNR, and occupied bandwidth



# Specifications

## Frequency

### Frequency

Range	DC to 300 MHz
Span	100 Hz to 300 MHz

### Resolution bandwidth (RBW)

Modes	Auto	Automatically sets the RBW based on the current span and window function
	Manual	Allows the user to manually set the RBW within the limits tolerated by the span and window function
	Min	Sets the RBW at the minimum possible value for the current span and window function The minimum RBW is 2.2 Hz
Windows	None (uniform), Hanning, Flat Top, Blackman-Harris	

## Amplitude

### Voltage

Channels	4
Input coupling	AC / DC
Input impedance	50 $\Omega$ / 1 M $\Omega$
Input attenuation	0 dB / 20 dB
Input bandwidth (-3 dB)	300 MHz / 600 MHz switchable
Input voltage range	0.4 V <sub>pp</sub> into 50 $\Omega$ with 0 dB attenuation 4 V <sub>pp</sub> into 50 $\Omega$ with 20 dB attenuation 40 V <sub>pp</sub> into 50 $\Omega$ with 40 dB attenuation

### Display

Scales	Volts, dBm, dBV
Display modes	Power, Power Spectral Density (PSD)
Video bandwidth (VBW)	10 Hz to 380 kHz depending on span
Averages	1 to 100
Persistence	Off, 100 ms to 10 s, infinite



## Synthesizer

### Synthesizer

Channels	4
Output impedance	50 $\Omega$
Waveforms <sup>7</sup>	Sine
Output frequency range	1 mHz to 500 MHz
Sweep mode	Sweeps the output frequency across the current span with a fixed sweep period of 5 seconds
Output voltage range	> 100 MHz: 2 V <sub>pp</sub> into 50 $\Omega$ 1 mHz to 100 MHz: 10 V <sub>pp</sub> into 50 $\Omega$

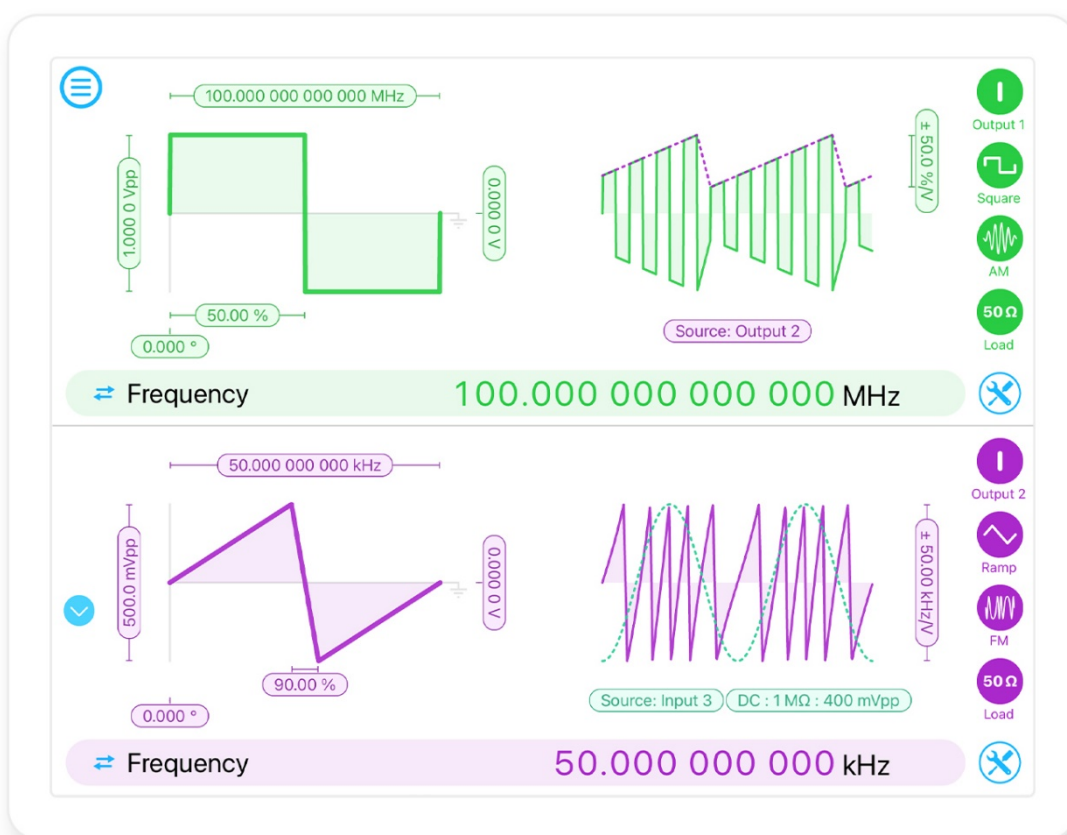
<sup>7</sup> Modulation not available for waveforms synthesized using the oscilloscope instrument.



# Moku:Pro's Waveform Generator

## Description

Moku:Pro's Waveform Generator enables you to generate four independent waveforms with a maximum bandwidth of 500 MHz. Select between sine, square, ramp, pulsed, or DC waveform shapes. High bandwidth modulation of phase, frequency, or amplitude, or generate triggered bursts or sweeps from an internal or external source.



## Features

- Generate 4 independent phase coherent waveforms from DC to 500 MHz Specifications.
- 5 built-in waveforms: sine, square, ramp, pulse, and DC.
- Broadband FM, AM, and PM modulation with internal waveform (cross-channel modulation) or external input.
- Versatile trigger options: from input, dedicated TTL trigger port, or another channel.
- 10 MHz reference input and output.



## Common characteristics

### Overview

Channels	4
Bandwidth (maximum output frequency)	500 MHz (2 V <sub>pp</sub> into 50 Ω), 100 MHz (10 V <sub>pp</sub> into 50 Ω)
Sampling rate	1.25 GSa/s per channel
Output impedance	50 Ω
Waveforms	Sine, Square, Ramp, Pulse, DC

### Amplitude

Range	1 mV <sub>pp</sub> to 10 V <sub>pp</sub> into 50 Ω
Offset error	< 500 μV into 50 Ω
Resolution	100 μV
Units	V <sub>pp</sub> , dBm

### DC offset

Range (peak AC + DC)	± 5 V into 50 Ω
Resolution	100 μV

### Phase offset

Range	0° to 360°
Resolution	0.001°

## Waveform characteristics

### Sine

Frequency range	1 mHz to 500 MHz
-----------------	------------------



## Square

---

Frequency range	1 mHz to 150 MHz
-----------------	------------------

---

## Ramp

---

Frequency range	1 mHz to 150 MHz
Symmetry <sup>8</sup>	16% to 84% at 100 MHz 3.2% to 96.8% at 20 MHz 0.8% to 99.2% at 5 MHz

---

## Pulse

---

Frequency range	1 mHz to 150 MHz
Period range	1 ks to 5 ns
Pulse width	2 ns to (period - edge time)
Edge time	2 ns to pulse width
Edge time resolution	1 ns

---

## Modulation

### Amplitude

---

Carrier waveforms	Sine, Square, Ramp, Pulse
Source	Internal, External
Internal modulation	Sine
Frequency	1 mHz to 125 MHz
Depth	0% to 100%

---

### Frequency

---

Carrier waveforms	Sine, Square, Ramp, Pulse
Source	Internal, External
Internal modulation	Sine
Frequency	1 mHz to 125 MHz
Deviation (carrier + deviation)	1 mHz to 125 MHz

---

### Phase

---

Carrier waveforms	Sine, Square, Ramp, Pulse
Source	Internal, External

---

---

<sup>8</sup> Symmetry is limited by the minimum rise time of 2 ns and number of harmonics required to maintain a linearity of more than 99%.



## Phase

Internal modulation	Sine
Frequency	DC to 125 MHz
Phase shift	0.0° to 360.0°

## Burst

Modes of Operation	Start, N-Cycle, Gated
N-Cycle range	1 to 1,000,000
Trigger Sources	Ch1: Input 1, Input 2, Input 3, Input 4, Output 2, Output 3, Output 4, External, Internal Ch2: Input 1, Input 2, Input 3, Input 4, Output 1, Output 3, Output 4, External, Internal Ch3: Input 1, Input 2, Input 3, Input 4, Output 1, Output 2, Output 4, External, Internal Ch4: Input 1, Input 2, Input 3, Input 4, Output 1, Output 2, Output 3, External, Internal

## Sweep

Sweep Frequency Start/End	Sine: 1 mHz to 500 MHz Square, Ramp, Pulse: 1 mHz to 200 MHz
Sweep Time	1 ms to 1 ks
Trigger Sources	Ch1: Input 1, Input 2, Input 3, Input 4, Output 2, Output 3, Output 4, External, Internal Ch2: Input 1, Input 2, Input 3, Input 4, Output 1, Output 3, Output 4, External, Internal Ch3: Input 1, Input 2, Input 3, Input 4, Output 1, Output 2, Output 4, External, Internal Ch4: Input 1, Input 2, Input 3, Input 4, Output 1, Output 2, Output 3, External, Internal
Nominal Trigger Level	Input Channel: 1.8 V Output Channel: 0.5 V External: 1.2 V



This information is subject to change without notice.

© 2021 Liquid Instruments. All rights reserved.

## X-ON Electronics

Largest Supplier of Electrical and Electronic Components

*Click to view similar products for [Benchtop Oscilloscopes](#) category:*

*Click to view products by [Liquid Instruments](#) manufacturer:*

Other Similar products are found below :

[MDO32 3-BW-1000](#) [TBS2072B](#) [TBS2102B](#) [TBS1072C](#) [TBS1102C](#) [TBS1202C](#) [DSO3064A](#) [DSO5102P](#) [CC-650](#) [GDS-2072A](#) [GDS-2074E](#)  
[GDS-2202E](#) [GDS-2204E](#) [2555](#) [2557](#) [2568](#) [HDO4024A](#) [2540C](#) [2542C](#) [2569-MSO](#) [2190E](#) [DSOX2002A/DSO0000-903](#) [GDS-2202A](#) [MDO-](#)  
[2202EG](#) [MDO-2204EX](#) [HANTEK DSO4084B](#) [HANTEK DSO4084C](#) [HANTEK DSO4104B](#) [HANTEK DSO4104C](#) [HANTEK DSO4204B](#)  
[HANTEK DSO4204C](#) [HANTEK DSO4254B](#) [DSO-2090](#) [DSO-2150](#) [DSO5062B](#) [RTB2K-202](#) [RTC1K-COM2](#) [UTD2025CL](#) [UTD2052CL](#)  
[CC-65](#) [MSO5102D](#) [MSO5202D](#) [PICOSCOPE5444DMSO](#) [GDS-1054B](#) [GDS-1072B](#) [GDS-1074B](#) [GDS-1102B \(CE\) 2CH](#) [GDS-1104B](#)  
[GDS-2072E](#) [GDS-2102E](#)