

FEATURES

- * 0.28 inch (7 mm) DIGIT HEIGHT
- * CONTINUOUS UNIFORM SEGMENTS
- * LOW POWER REQUIREMENT
- * EXCELLENT CHARACTERS APPEARANCE
- * HIGH BRIGHTNESS & HIGH CONTRAST
- * WIDE VIEWING ANGLE
- * SOLID STATE RELIABILITY
- * CATEGORIZED FOR LUMINOUS INTENSITY
- * **LEAD-FREE PACKAGE (ACCORDING TO ROHS)**

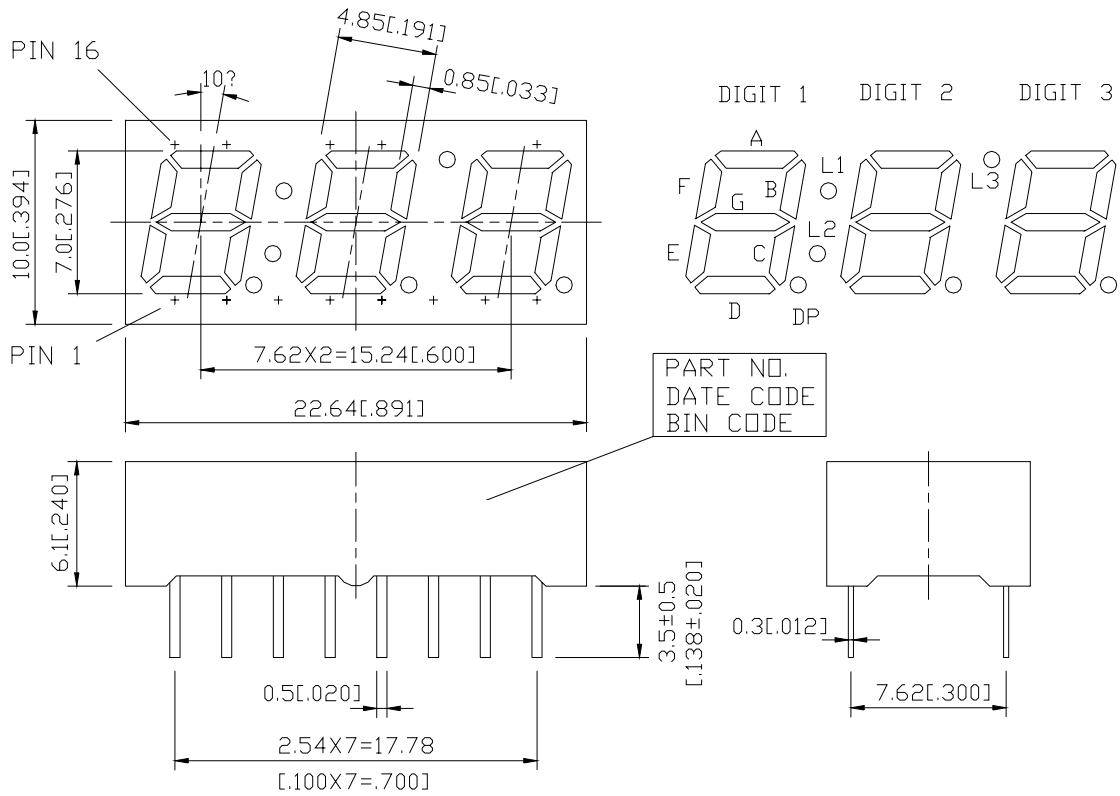
DESCRIPTION

The LTC-2721WC is a 0.28 inch (7 mm) digit height triple digit seven-segment display. This device uses LED chips (AlGaAs epi on GaAs substrate). The display has gray face and white segments. The AlGaAs red seven segment displays are designed for applications requiring low power consumption. They are tested and selected for the excellent low current characteristics to ensure that the segments are matched at low current. Drive current as low as 1 mA per segment is available.

DEVICE

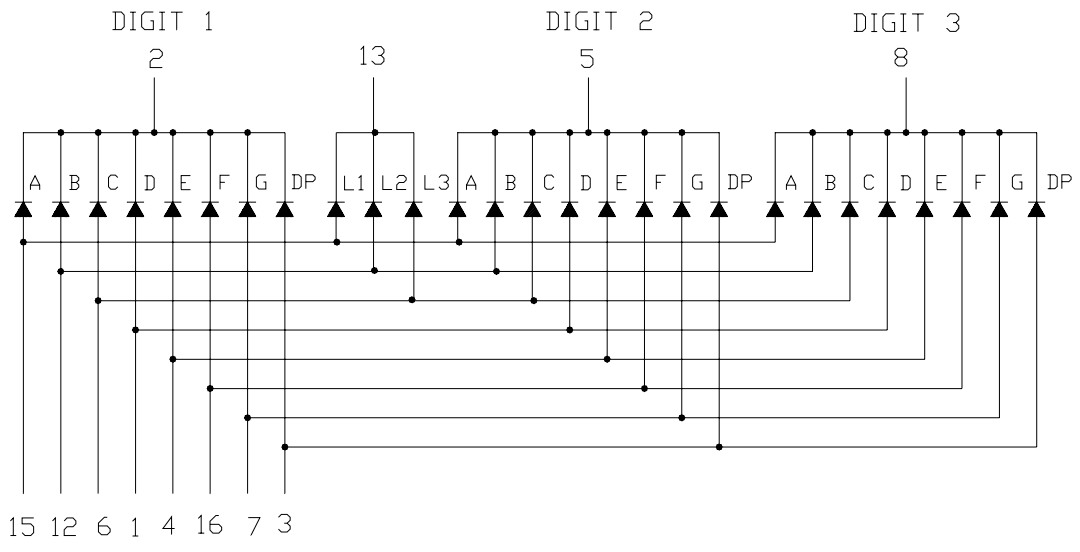
| PART NO. | DESCRIPTION |
|-----------------|--------------------------|
| AlGaAs Red | Multiplex Common Cathode |
| LTC-2721WC | Rt. Hand Decimal |

PACKAGE DIMENSIONS



NOTES: All dimensions are in millimeters. Tolerances are ± 0.25 mm (0.01") unless otherwise noted.

INTERNAL CIRCUIT DIAGRAM



PIN CONNECTION

| NO | CONNECTION |
|-----------|---------------------------|
| 1 | ANODE D |
| 2 | COMMON CATHODE (DIGIT 1) |
| 3 | ANODE D.P. |
| 4 | ANODE E |
| 5 | COMMON CATHODE (DIGIT 2) |
| 6 | ANODE C |
| 7 | ANODE G |
| 8 | COMMON CATHODE (DIGIT 3) |
| 9 | NO CONNECTION |
| 10 | NO PIN |
| 11 | NO PIN |
| 12 | ANODE B |
| 13 | COMMON CATHODE L1, L2, L3 |
| 14 | NO PIN |
| 15 | ANODE A |
| 16 | ANODE F |

ABSOLUTE MAXIMUM RATING

| PARAMETER | MAXIMUM RATING | UNIT |
|--|----------------|------|
| Power Dissipation Per Segment | 75 | mW |
| Peak Forward Current Per Segment (Frequency 1Khz, 10% duty cycle) | 125* | mA |
| Continuous Forward Current Per Segment | 30 | mA |
| Forward Current Derating from 25 ⁰ C | 0.4 | mA/ |
| Reverse Voltage Per Segment | 5 | V |
| Operating Temperature Range | -35 to +85 | |
| Storage Temperature Range | -35 to +85 | |
| Soldering Conditions : 1/16 inch below seating plane for 3 seconds at 260 ⁰ C | | |

*see figure 5 to establish pulsed condition

ELECTRICAL / OPTICAL CHARACTERISTICS AT Ta=25⁰C

| PARAMETER | SYMBOL | MIN. | TYP. | MAX. | UNIT | TEST CONDITION |
|-----------------------------------|-------------------|------|------|------|------|----------------------|
| Average Luminous Intensity | I _v | 200 | 600 | | μcd | I _F =1mA |
| | | | 3100 | | μcd | I _F =5mA |
| Peak Emission Wavelength | λ _p | | 660 | | nm | I _F =20mA |
| Spectral Line Half-Width | Δλ | | 35 | | nm | I _F =20mA |
| Dominant Wavelength | λ _d | | 638 | | nm | I _F =20mA |
| Forward Voltage Per Segment | V _F | | 1.6 | 2.4 | V | I _F =1mA |
| | | | 1.7 | | | I _F =5mA |
| | | | 1.8 | | | I _F =20mA |
| Reverse Current Per Segment | I _R | | | 100 | μA | V _R =5V |
| Luminous Intensity Matching Ratio | I _v -m | | | 2:1 | | I _F =1mA |

Note: Luminous intensity is measured with a light sensor and filter combination that approximates the CIE (Commision Internationale De L'Eclairage) eye-response curve.

TYPICAL ELECTRICAL / OPTICAL CHARACTERISTIC CURVES

(25°C Ambient Temperature Unless Otherwise Noted)

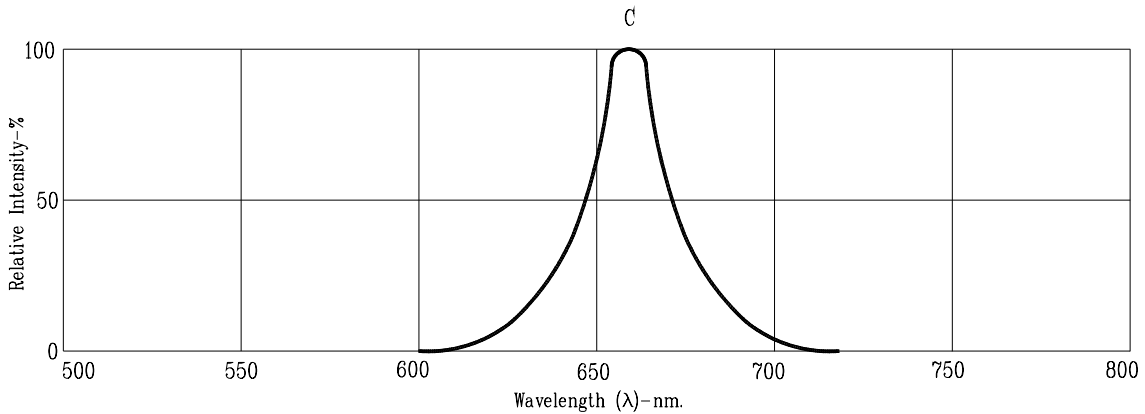


Fig1. RELATIVE INTENSITY VS. WAVELENGTH

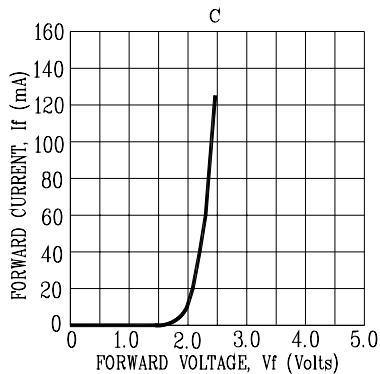


Fig2. Forward Current vs. Forward Voltage

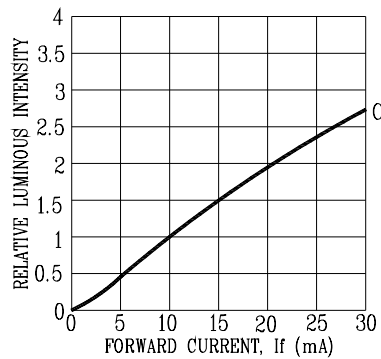


Fig3. Relative Luminous Intensity vs. DC Forward Current

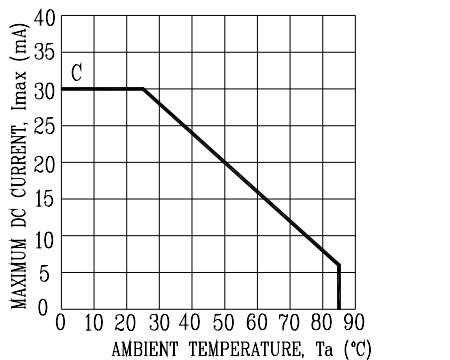


Fig4. Maximum Allowable DC Current vs. Ambient Temperature

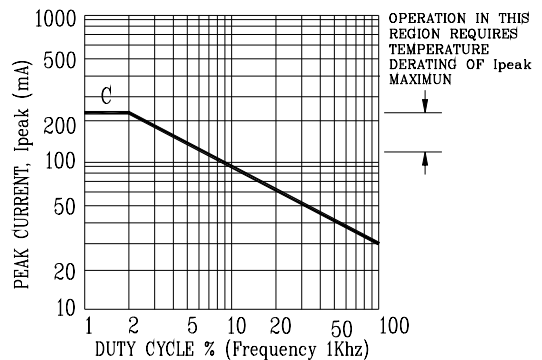


Fig5. Maximum Peak Current vs. Duty Cycle %

NOTE: C=AlGaAs RED

X-ON Electronics

Largest Supplier of Electrical and Electronic Components

Click to view similar products for [LED Displays & Accessories](#) category:

Click to view products by [Lite-On](#) manufacturer:

Other Similar products are found below :

[LTC-4624JD](#) [LTC-4627WC](#) [LTC-571P](#) [LTM-8522G](#) [LTP-4323P](#) [LTP-747G](#) [LTS-3361JG-06](#) [1668](#) [HT-F196NB-5323](#) [IPD2131-27](#) [SA03-12EWA](#) [LDQ-N514RI](#) [LDS-A3506RD](#) [LDS-A3926RI](#) [SC03-12HDB](#) [SI-B9T151550WW](#) [SI-B9V171550WW](#) [SLC-3PF-WL](#) [SLDN-32M-G1624](#) [LTC-2621JD](#) [LTC-2623WC](#) [LTC-4627JD](#) [LTD-322G](#) [LTD-482PC](#) [LTP-1057AHR](#) [LTP-1457AKR](#) [LTP-3784G-01](#) [LTS-313AP](#) [LTS-4812SKR-P](#) [LTS-547AE](#) [LTS-6780P](#) [446010401-3](#) [HV-7W30-6829](#) [DA43-11GWA](#) [LDD-A516RI-17](#) [LDD-E305RI](#) [LDQ-N3402RI](#) [LDQ-N3606RI](#) [LDT-M2804RI](#) [86004CB830](#) [LTP-3862JD](#) [LTP-2088AKD](#) [LTD-6740P](#) [LTS-6880Y](#) [LDS-SMC3002RISUGTR](#) [LTC-2623E](#)
[CC25-12YWA](#) [LDM-6432-P3-UR-1](#) [SR420312N/32](#)