



# Photointerrupter Product Data Sheet

LTH-306-64

Spec No.: DS55-2008-0010

Effective Date: 05/10/2008

Revision: -

**LITE-ON DCC**

**RELEASE**

BNS-OD-FC001/A4



# LITE-ON TECHNOLOGY CORPORATION

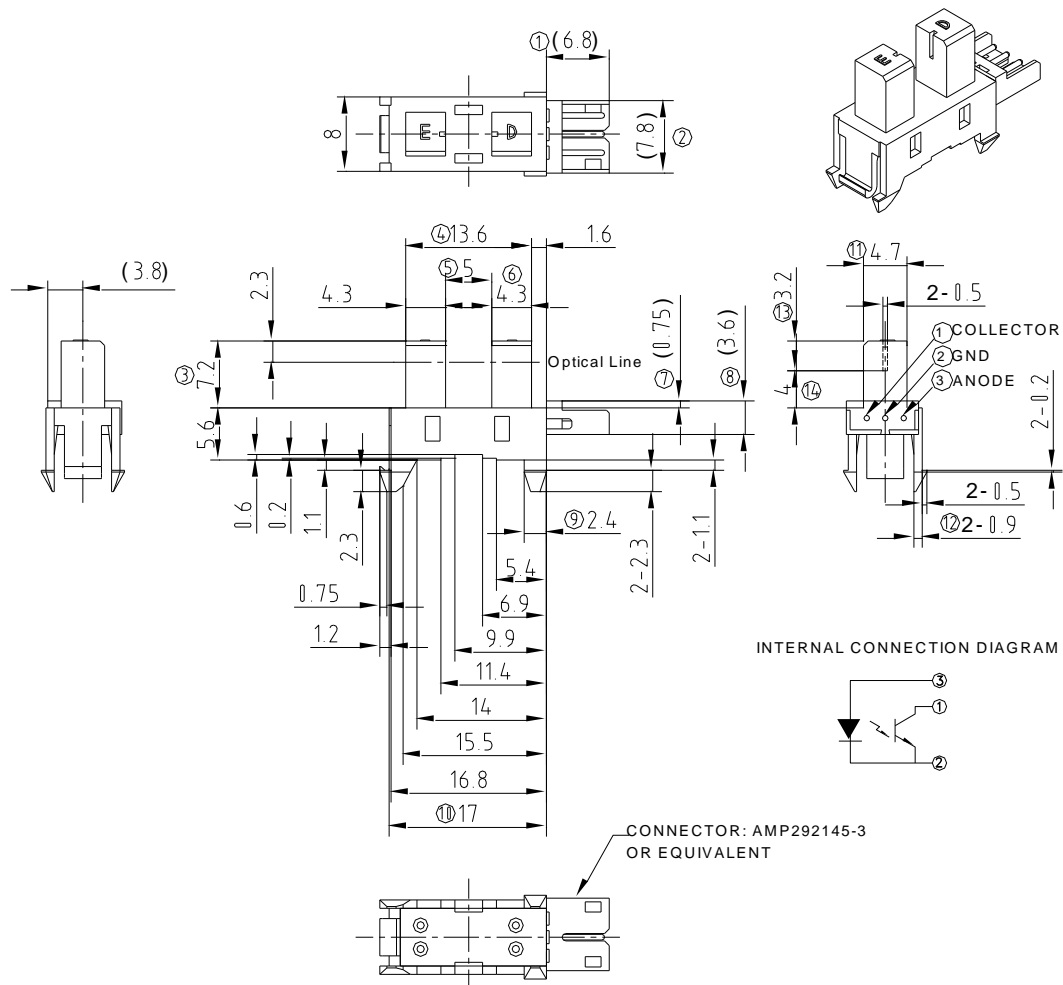
Property of LITE-ON Only

Origin Date : 04/29/2008		Originator : Shiqincui		Page : 0 of 5	
Rev.	Date	ECN OR QCN	Description of Change	Checker	
-	04/29/2008		NEW SPEC	Shiqincui	
Part No. : LTH-306-64 DATA SHEET					

## FEATURES

- \* SNAP MOUNTING.
- \* MECHANICAL SWITCH REPLACEMENT.
- \* ROHS COMPLIANT

## PACKAGE DIMENSIONS



### NOTES:

1. All dimensions are in millimeters (inches).
2. Tolerance is  $\pm 0.15\text{mm} (.006\text{'})$  unless otherwise noted.



## ABSOLUTE MAXIMUM RATINGS AT $T_A=25^{\circ}\text{C}$

PARAMETER	SYMBOL	MAXIMUM RATING	UNIT
INPUT LED			
Power Dissipation	$P_D$	75	mW
Peak Forward Current ( 300 pps , 10 $\mu\text{s}$ pulse)	$I_{CP}$	1	A
Continuous Forward Current	$I_F$	50	mA
Reverse Voltage	$V_R$	6	V
OUTPUT PHOTOTRANSISTOR			
Power Dissipation	$P_C$	100	mW
Collector-Emitter Voltage	$V_{CEO}$	30	V
Emitter-Collector Voltage	$V_{ECO}$	5	V
Collector Current	$I_C$	20	mA
Operating Temperature Range	$T_{opr}$	-25 $^{\circ}\text{C}$ to + 85 $^{\circ}\text{C}$	
Storage Temperature Range	$T_{stg}$	-55 $^{\circ}\text{C}$ to + 100 $^{\circ}\text{C}$	



# LITE-ON TECHNOLOGY CORPORATION

Property of Lite-On Only

## ELECTRICAL OPTICAL CHARACTERISTICS AT TA=25°C

PARAMETER	SYMBOL	MIN.	TYP.	MAX.	UNIT	TEST CONDITION
<b>INPUT LED</b>						
Forward Voltage	$V_F$		1.2	1.4	V	$I_F = 20\text{mA}$
Forward Voltage	$V_F$		0.8	1	V	$I_F = 1\mu\text{A}$
Reverse Current	$I_R$			10	$\mu\text{A}$	$V_R=3\text{V}$
<b>OUTPUT PHOTOTRANSISTOR</b>						
Collector-Emitter Dark Current	$I_{CEO}$		1	100	nA	$V_{CE}=20\text{V}$
Collector-Emitter Voltage	$BV_{CEO}$	30			V	$I_{ce}=1\text{mA}$
Emitter-Collector Voltage	$BV_{ECO}$	5			V	$I_{ec}=100\mu\text{A}$
<b>COUPLER</b>						
Collector-Emitter Saturation Voltage	$V_{CE(SAT)}$			0.4	V	$I_C=0.25\text{mA}$ $I_F=20\text{mA}$
On State Collector Current	$I_{C(ON)}$	0.5		15	mA	$V_{CE}=5\text{V}$ $I_F=20\text{mA}$
Response Time	Rise Time	$T_R$		3	15	$\mu\text{S}$ $V_{CE}=2\text{V}, I_C=2\text{mA}$ $R_L=100\ \Omega$
	Fall Time	$T_F$		4	20	

### Bin Match table vs. Icon value(mA) (For Reference)

LTE-306 LTR-306	BinC	BinD	BinE	BinF
BinD	✗	✓	✓	✓
BinE	✓	✓	✓	✓
BinF	✓	✓	✓	✓
BinG	✓	✓	✓	✓
BinH	✓	✓	✓	✓

## TYPICAL ELECTRICAL / OPTICAL CHARACTERISTICS CURVES

(25°C Ambient Temperature Unless Otherwise Noted)

Fig.1 Power Dissipation vs. Ambient Temperature

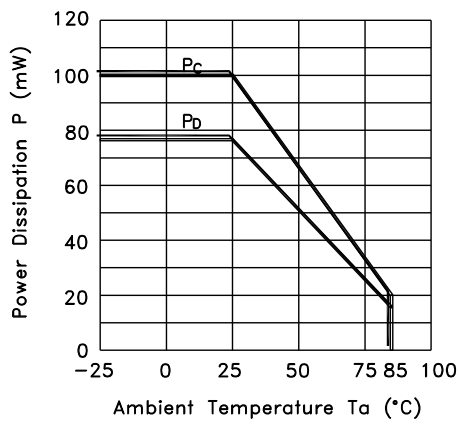


Fig.2 Forward Current  $I_F$  vs. Forward Voltage

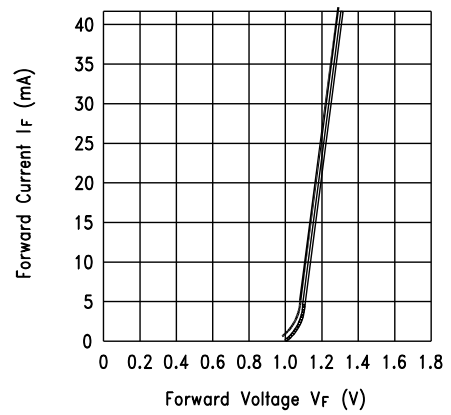


Fig.3 Collector Current vs. Forward Voltage

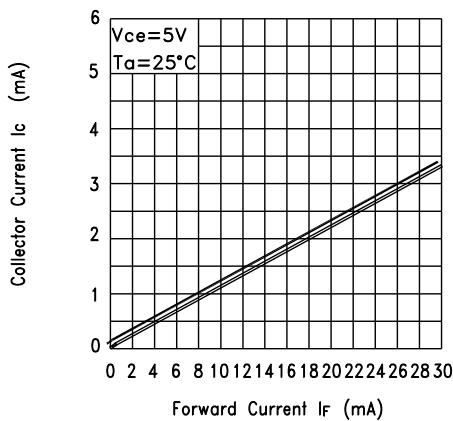
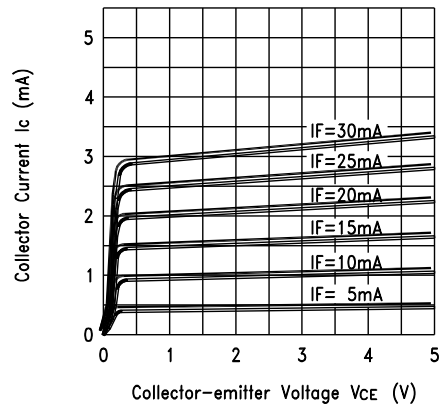


Fig.4 Collector Current vs. Collector-emitter Voltage



## TYPICAL ELECTRICAL / OPTICAL CHARACTERISTICS CURVES

(25°C Ambient Temperature Unless Otherwise Noted)

Fig.5 Collector Current vs. Ambient Temperature

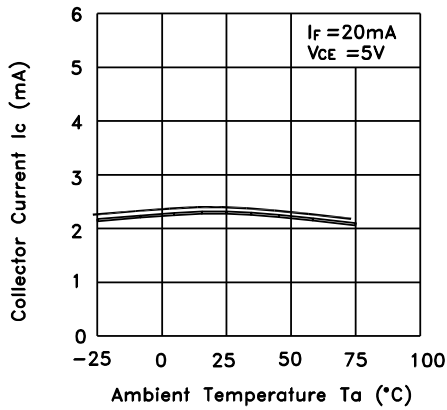


Fig.6 Collector-emitter Saturation Voltage vs. Ambient Temperature

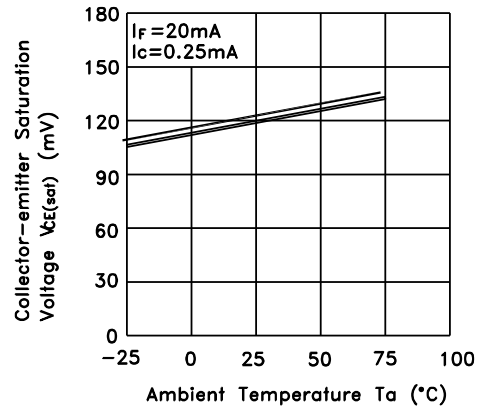
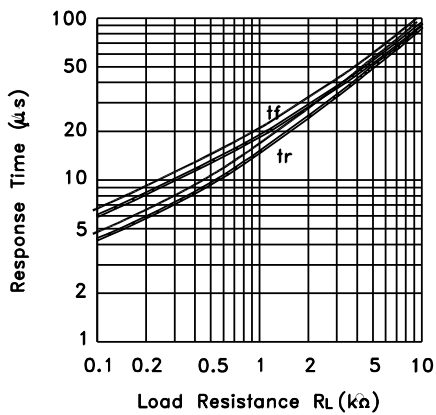
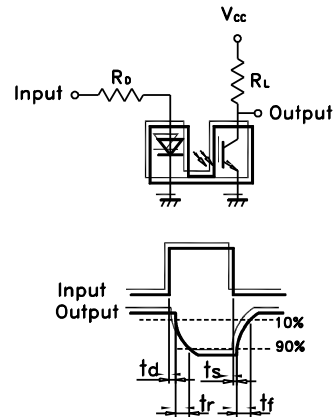


Fig.7 Response Time vs. Load Resistance



Test Circuit for Response Time



## X-ON Electronics

Largest Supplier of Electrical and Electronic Components

*Click to view similar products for* [Optical Switches, Transmissive, Phototransistor Output](#) *category:*

*Click to view products by* [Lite-On](#) *manufacturer:*

Other Similar products are found below :

[LTH-301-07](#) [LTH-301-23](#) [E3C-X2C](#) [E3S-LS20B4S1](#) [E3SX2CE4](#) [RPI-0125B](#) [RPI-2501](#) [RPI-576A](#) [KRA021](#) [LTH-306-04M](#) [LTH-309-08](#)  
[HOA0865-100](#) [HOA1961-055](#) [E3F-3C4](#) [LTH-306-01](#) [EESX677C1JR01M](#) [SIT506F-A](#) [HOA1883-501](#) [PT928-6B-F](#) [RPI-243](#) [EE-SX675P-](#)  
[WR 1M](#) [OPB806](#) [EE-SX1128](#) [OPB857Z](#) [EE-SV3-B](#) [EE-SJ3-D](#) [RPI-0226](#) [EE-SX951P-W 1M](#) [EE-SX672R](#) [EE-SX670P-WR 1M](#) [LTH-301-](#)  
[32](#) [EESX674PWR1M](#) [EE-SX952-W 1M](#) [RPI-0352E](#) [RPI-352C40N](#) [DY-ITR002](#) [DY-ITR1100](#) [DY-ITR9909-W2](#) [HOA0825-001](#) [HOA0825-](#)  
[003](#) [HOA0860-N51](#) [HOA0861-N55](#) [HOA0861-P55](#) [HOA0861-T55](#) [HOA0866-P55](#) [HOA0866-T55](#) [HOA0867-P55](#) [HOA0867-T55](#)  
[HOA0870-T51](#) [HOA0871-L55](#)