

SURFACE MOUNT SCHOTTKY BARRIER DIODE

**REVERSE VOLTAGE – 70 Volts
FORWARD CURRENT – 0.07 Ampere**

FEATURES

- Low forward current
- High breakdown voltage
- Guard ring protected
- Low diode capacitance

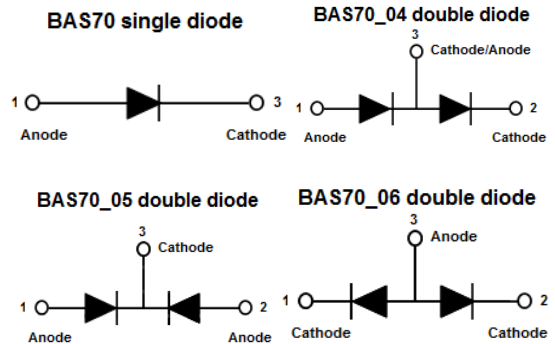
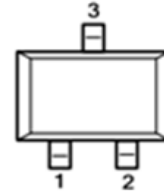
MECHANICAL DATA

- Case: SOT-23 plastic
- Lead free in RoHS 2002/95/EC compliant

APPLICATION

- Ultra high-speed switching
- Voltage clamping
- Protection circuits

SOT-23



MAXIMUM RATINGS @ T_A = 25°C unless otherwise specified

PARAMETER	SYMBOL	BAS70	BAS70-04	BAS70-05	BAS70-06	UNIT
Device marking code	Note	BE	CG	EH	GK	--
Continuous reverse voltage	V _R	70				V
Continuous forward current	I _F	70				mA
Non-repetitive peak forward current @ t _p <1s; δ<0.5	I _{FSM}	100				mA
Junction and storage temperature	T _J , T _{STG}	-65 ~ 150				°C

STATIC ELECTRICAL CHARACTERISTICS @ T_A = 25°C unless otherwise specified

PARAMETER	TEST CONDITIONS	SYMBOL	MAX	UNIT
Forward voltage	I _F = 1mA	V _F	410	mV
	I _F = 10mA		750	
	I _F = 15mA		1000	
Reverse current (Note 1)	V _R = 70V	I _R	10	uA
Diode capacitance	f = 1 MHz ; V _R = 0	C _D	2	pF

THERMAL CHARACTERISTICS @ T_A = 25°C unless otherwise specified

PARAMETER	SYMBOL	VALUE	UNIT
Thermal resistance – junction to ambient (Note 2)	R _{thjA}	500	°C/W

Note :

- (1) Pulse test : t_p = 300us ; δ = 0.02
- (2) Refer to SOT-23 or SOT-143B standard mounting conditions.

**RATING AND CHARACTERISTIC CURVES
BAS70, BAS70-04 thru 06**



FIG. 1 - FORWARD CURRENT AS A FUNCTION OF FORWARD VOLTAGE; TYPICAL VALUES

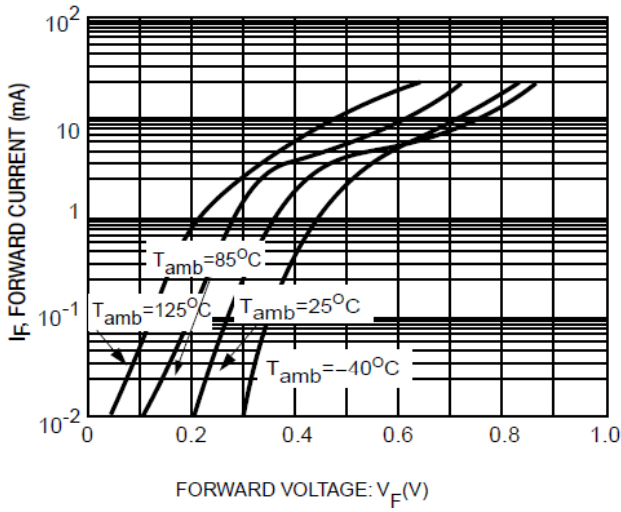


FIG. 2 - REVERSE CURRENT AS A FUNCTION OF REVERSE VOLTAGE; TYPICAL VALUES.

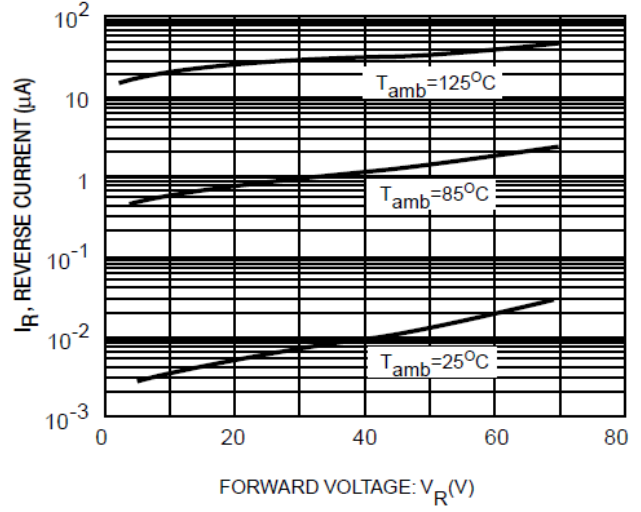


FIG. 3 - DIFFERENTIAL FORWARD RESISTANCE AS A FUNCTION OF FORWARD CURRENT; TYPICAL VALUES.

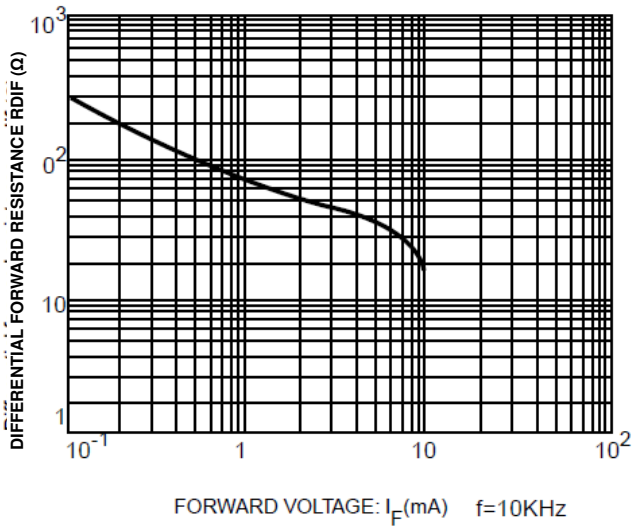
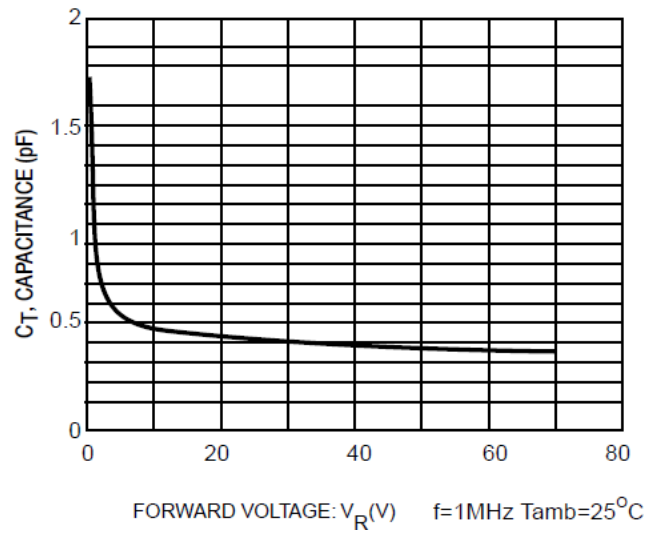
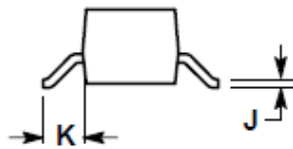
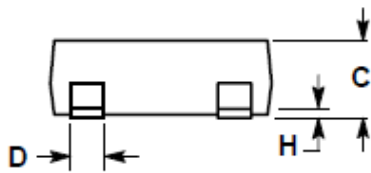
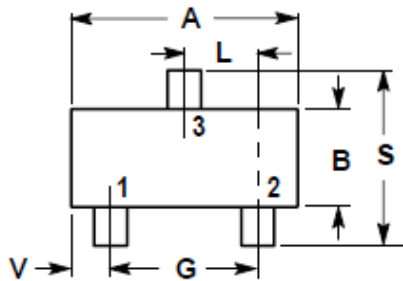


FIG. 4 - DIODE CAPACITANCE AS A FUNCTION OF REVERSE VOLTAGE; TYPICAL VALUES.



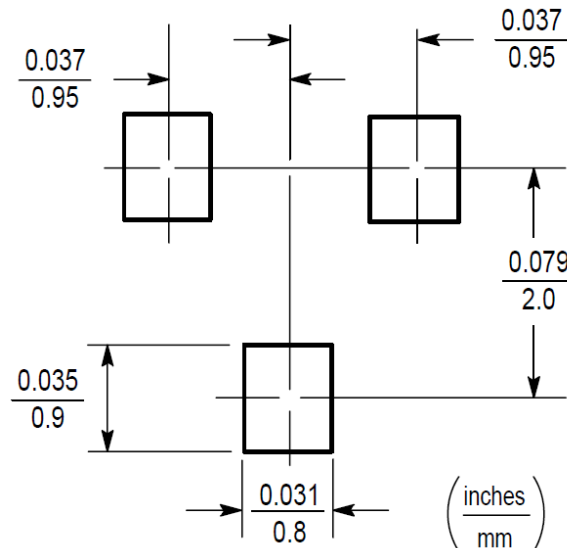
Package Dimensions :

SOT-23



Dim.	INCHES		MILLIMETERS	
	Min.	Max.	Min.	Max.
A	0.1102	0.1197	2.80	3.04
B	0.0472	0.0551	1.20	1.40
C	0.0350	0.0440	0.89	1.11
D	0.0150	0.0200	0.37	0.50
G	0.0701	0.0807	1.78	2.04
H	0.0005	0.0040	0.013	0.100
J	0.0034	0.0070	0.085	0.177
K	0.0140	0.0285	0.35	0.69
L	0.0350	0.0401	0.89	1.02
S	0.0830	0.1039	2.10	2.64
V	0.0177	0.0236	0.45	0.60

Soldering Pad Layout :



Note:

1. Dimensioning and tolerancing per ansy14.5m 1982
2. Controlling dimension : inch

Important Notice and Disclaimer

LSC reserves the right to make changes to this document and its products and specifications at any time without notice. Customers should obtain and confirm the latest product information and specifications before final design, purchase or use.

LSC makes no warranty, representation or guarantee regarding the suitability of its products for any particular purpose, nor does LSC assume any liability for application assistance or customer product design. LSC does not warrant or accept any liability with products which are purchased or used for any unintended or unauthorized application.

No license is granted by implication or otherwise under any intellectual property rights of LSC.

LSC products are not authorized for use as critical components in life support devices or systems without express written approval of LSC.

X-ON Electronics

Largest Supplier of Electrical and Electronic Components

Click to view similar products for [Schottky Diodes & Rectifiers](#) category:

Click to view products by [Lite-On](#) manufacturer:

Other Similar products are found below :

[CUS06\(TE85L,Q,M\)](#) [MA4E2039](#) [D1FH3-5063](#) [MBR0530L-TP](#) [MBR10100CT-BP](#) [MBR30H100MFST1G](#) [MMBD301M3T5G](#) [PMAD1103-LF](#) [PMAD1108-LF](#) [RB160M-50TR](#) [RB520S-30](#) [RB551V-30](#) [DD350N18K](#) [DZ435N40K](#) [DZ600N16K](#) [BAS16E6433HTMA1](#) [BAS 3010S-02LRH E6327](#) [BAT 54-02LRH E6327](#) [IDL02G65C5XUMA1](#) [NSR05F40QNXT5G](#) [NSVR05F40NXT5G](#) [JANS1N6640](#) [SB07-03C-TB-H](#) [SB1003M3-TL-W](#) [SBAT54CWT1G](#) [SBM30-03-TR-E](#) [SBS818-TL-E](#) [SK32A-LTP](#) [SK33A-TP](#) [SK34A-TP](#) [SK34B-TP](#) [SMD1200PL-TP](#) [ACDBN160-HF](#) [SS3003CH-TL-E](#) [STPS30S45CW](#) [PDS3100Q-7](#) [GA01SHT18](#) [CRS10I30A\(TE85L,QM\)](#) [MBR1240MFST1G](#) [MBRB30H30CT-1G](#) [BAS28E6433HTMA1](#) [BAS 70-02L E6327](#) [HSB123JTR-E](#) [JANTX1N5712-1](#) [VS-STPS40L45CW-N3](#) [DD350N12K](#) [SB007-03C-TB-E](#) [SB10015M-TL-E](#) [SB1003M3-TL-E](#) [SK110-LTP](#)