

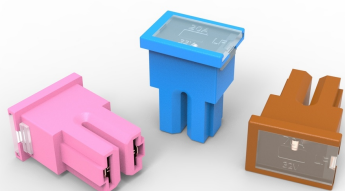
# PAL Fuses - 293 Series

## Rated 32 V DC

RoHS

### Specifications

<b>Voltage Rating:</b>	32 V DC
<b>Current Cycling:</b>	24°C
<b>Operating Temperature Range:</b>	-40°C to +125°C
<b>Complies with</b>	JASO 0612



PAL Fuses - 293 Series

### Description

Many Japanese automakers use 293 Series Auto Link PAL fuses as original equipment. The 32 V cartridge fuses withstand extreme temperatures while protecting circuits for alternators and starters. During tests, each of the 293 Series PAL fuses met its performance requirements when receiving 50 % of its ampere rating for 10 000 cycles when current flowed for 5 minutes and was shut off for 10 minutes. The tests were conducted while the temperature of the bolt-down cartridge fuse was 24 °C.

### Features & Benefits

- Color coding indicates ampere rating
- Transparent covers make it easier to see when fuses blow
- Snap securely onto terminals

### Applications

- Cars made in Japan and the United States

### Ordering Information

Part Number	Package Size
0293xxx.H	100
0293xxx.U	500
0293xxx.MXJ	1000

# Cable Fuses and PAL Fuses

## 293 Series - Auto Link PAL 293 Series Fuse

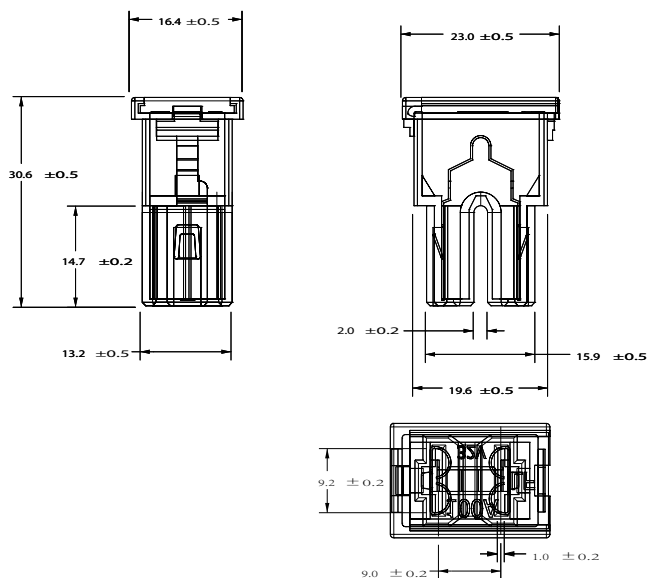
### Ratings

Part Number	Current Rating (A)	Body Color
0293020._	20	LIGHT BLUE
0293030._	30	PINK
0293040._	40	GREEN
0293050._	50	RED
0293060._	60	YELLOW
0293070._	70	BROWN
0293080._	80	BLACK
0293100._	100	BLUE

(Average Initial Measurements)

### Dimensions

Dimensions in mm



# Cable Fuses and PAL Fuses

## 293 Series - Auto Link PAL 293 Series Fuse

### Time-Current Characteristics

% of Rating	Opening Time Min / Max (s)
110	14,400
200	5 / 100
350	0.2 / 7
600	0.040 / 1

## X-ON Electronics

Largest Supplier of Electrical and Electronic Components

*Click to view similar products for [Automotive Fuses](#) category:*

*Click to view products by [Littelfuse](#) manufacturer:*

Other Similar products are found below :

[ATM-4LP](#) [299080](#) [HBO-70](#) [0287015](#) [FMM-15](#) [0297003.WXT](#) [0695060.PXPS](#) [MRBF-075](#) [MRBF-300](#) [MRBF-200](#) [ANX80-UL-20A](#)  
[ANX80-UL-25A](#) [ANX80-UL-30A](#) [ANX80-UL-35A](#) [ANX80-UL-40A](#) [ANT-I-3A](#) [APM-I-25A](#) [APR-10A](#) [APR-25A](#) [ANX58-UL-20A](#)  
[ANX58-UL-25A](#) [ANX58-UL-35A](#) [ANX58-UL-40A](#) [ANX58-UL-50A](#) [ANM-4A](#) [ANM-25A](#) [ANE-175A](#) [APM-25A](#) [APM-4A](#) [ACB2-PL-](#)  
[15A](#) [ACB2-PL-25A](#) [ANM58-15A](#) [ANM58-5A](#) [FMX-LP-20A](#) [MIDA-50A](#) [0695040.PXP](#) [0327030.YX2T](#) [0298500.UX1M8](#) [0299070.ZXT](#)  
[20A32V](#) [ATM-1](#) [MRBF-040](#) [MRBF-100](#) [MRBF-250](#) [MRBF-050](#) [MRBF-060](#) [CFCOVER-2R](#) [MRBF-030](#) [3298600.ZXM10](#) [AMG-80](#)