

# STACKABLE PANEL MOUNT FUSE HOLDER

with Wire Leads for ATO® Style Blade Fuse



## Description

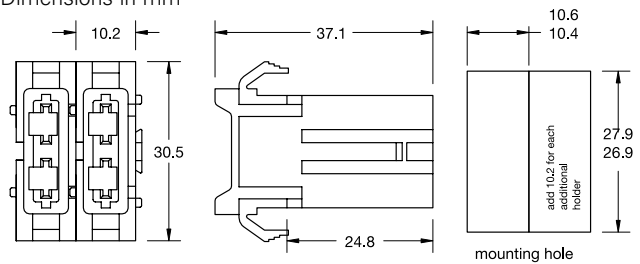
Intended for use with 32V ATO®/ FKS Fuses rated up to 20A or 30A.

## Ordering Information

| Part Number | Package Size |
|-------------|--------------|
| 01550xxxLXN | 50           |
| 01550xxxZ   | 100          |

## Dimensions

Dimensions in mm



## Ratings

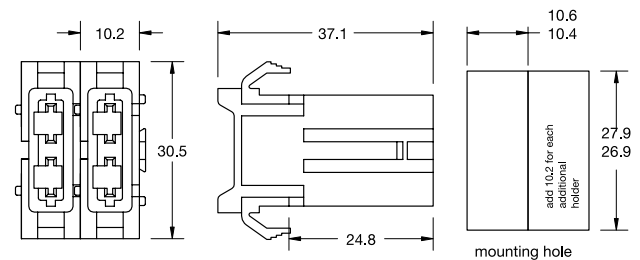
| Part Number | Description                                   | Fuse Rating |
|-------------|---|-------------|
| 01550300_   | 14AWG/2.1mm <sup>2</sup> stranded black wire  | 20 A        |
| 01550400_   | 10AWG/5.3mm <sup>2</sup> stranded orange wire | 30 A        |

# ATO® PANEL MOUNT HOLDER COMPONENTS



## Dimensions

Dimensions in mm



## Ratings

| Part Number | Description   | Fuse Rating |
|-------------|---|-------------|
| 868-062-000 | Housing only, color black - 2700 pcs.                         | -           |
| 913-008     | Reeled Terminals A, wire 14AWG/2.1mm <sup>2</sup> -2000 pcs.  | 20A         |
| 913-008-001 | Singe Terminals A, wire 14AWG/2.1mm <sup>2</sup> -1000 pcs.   | 20A         |
| 913-007     | Reeled Terminals B, wire 10AWG/5.3mm <sup>2</sup> - 2000 pcs. | 30A         |
| 913-007-001 | Singe Terminals B, wire 10AWG/5.3mm <sup>2</sup> -1000 pcs.   | 30A         |

## X-ON Electronics

Largest Supplier of Electrical and Electronic Components

*Click to view similar products for [Fuse Holder Accessories](#) category:*

*Click to view products by [Littelfuse](#) manufacturer:*

Other Similar products are found below :

[BK/1A1337](#) [1A1853](#) [1A4421](#) [1A5220](#) [903-048](#) [1A1337](#) [1A4544](#) [1A5220-01](#) [CO2-10](#) [CO3-03](#) [348897](#) [B072-7007](#) [BK/1A4421](#) [BK/9732](#)  
[X30110](#) [09030012H](#) [09050023H](#) [00970021HXNVDL](#) [00BS0232P](#) [CO2-04](#) [BK1A1853](#) [BK9834](#) [0880.0001](#) [00970053XP](#) [3566C](#)  
[00970053H](#) [04450718ZX900](#) [CH10CL](#) [BP/FP-3](#) [58600000005](#) [33-012C](#) [880140](#) [00970023S](#) [880150](#) [PDM71009ZXM](#) [B109-7091-4](#) [B109-](#)  
[7091-6](#) [B109-7091-5](#) [901-524](#) [CVR-RH-25100](#) [LFH60030FBC](#) [03540514Z](#) [03540526Z](#) [03540531Z](#) [03540541Z](#) [03540525Z](#) [03540537Z](#)  
[03540539Z](#) [03540540Z](#) [FEH](#)