

05903300 & 05903500 RELAYS

12V/24V • Relays Continuous Use



05903300
12V



05903500
24V

Specifications

Max Operating Voltage:	12V-24V
Max Continuous Current:	200A-100A
Intermittent Current:	500A-250A at 1 sec
Operating Temp:	-40 °C to +100 °C
Ingress Protection:	IP67
Contacts:	Silver-plated Copper
Terminals:	M6 Tin-plated Brass

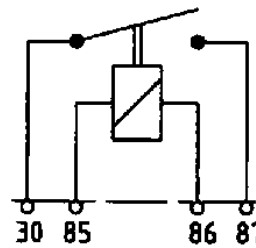
Applications

- Heavy trucks
- Commercial vehicles

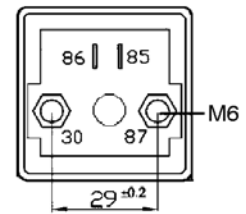
Web Resources

Download technical resources at:
littelfuse.com/relays

Electrical diagram



Mounting diagram

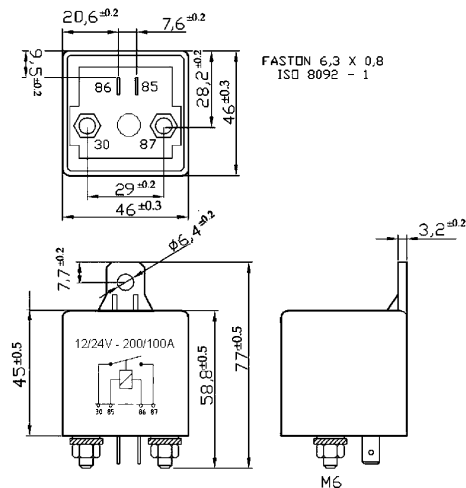


Description

05903300 A remote control switch for automotive users. Commonly used as a starter, with intermittent action it allows to draw 200A. While used for continuous working purposes a maximum of 120A can be loaded. It works on closing the circuit load with a 12V rated voltage.

05903500 A remote control switch for automotive users. Commonly used as a starter, with intermittent working or continuous working it allows to draw 100A. It works on closing the circuit load with a 24V rated voltage.

Dimensions in millimeters



Features and Benefits

- These relays switches are available in version 12V and 24V
- Available in heavy duty 100A and 200A versions.
- Brass contact nuts.

Ordering Information

PART NUMBER	VOLTAGE	AMPERAGE	IP PROTECTION	TERMINAL
05903300	12V DC	200A	IP67	M6 Tin-plated brass
05903500	24V DC	100A	IP67	M6 Tin-plated brass

X-ON Electronics

Largest Supplier of Electrical and Electronic Components

Click to view similar products for [Automotive Relays](#) category:

Click to view products by [Littelfuse](#) manufacturer:

Other Similar products are found below :

[7-1414968-8](#) [7-1617345-6](#) [9-1617516-5](#) [G5CE1ASIDC12](#) [1393204-2](#) [1393302-3](#) [13Z99A115-0074](#) [1432872-1](#) [1617057-2](#) [1617058-6](#)
[1617518-5](#) [2-1617057-2](#) [2-1617057-6](#) [2-1617058-3](#) [CB1F-M-12V-H15](#) [898H-1AH-D-001-12VDC](#) [24198-1](#) [4-1617057-0](#) [41FZ-200ACG-](#)
[BSL](#) [5-1616920-2](#) [5-1617052-9](#) [5407-0011-HS](#) [CB1AF-M-12V-H59](#) [5-1617346-8](#) [103-1AH-C-12VDC](#) [V23134A1052X299](#) [6-1393302-1](#)
[897H-1AH-D-R1-U01-12VDC](#) [FTR-P3CP024W1-06](#) [1-1617057-8](#) [3-1393305-1](#) [5436-0001-HS](#) [V23086-R1851-A502](#) [898H-1AH-D1SW-](#)
[R1-12VDC](#) [RH4C1P2607](#) [RE031005](#) [V23134M0052G242](#) [23234B0001X001-EV-144](#) [2-1904020-1](#) [V23234-A1001-X036](#) [2138602-1](#) [3-](#)
[1904020-8](#) [FBR56ND12-W1](#) [S11-1A-C1-24VDC](#) [FRC2U-DC12](#) [FRC7A-S-DC24V](#) [FTR-P6GN012WA](#) [LQ-12](#) [2-1414939-2](#) [FRC7C-S-](#)
[DC12V](#)