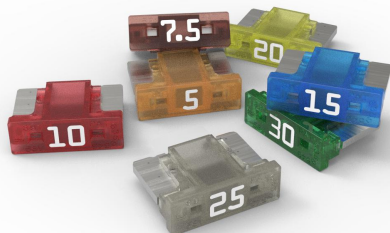


LOW PROFILE MINI® 10.9 Blade Fuses

Rated 58V

RoHS



Description

Low Profile MINI® 10.9mm fuses offer space and weight savings without sacrificing circuit protection. Despite their small size, these low-profile automotive fuses perform similarly to other MINI 58V blade fuses.

Specifications

Voltage Rating:	58 V DC
Interrupting Rating:	1000A @ 58 V DC
*Recommended Environmental Temperature:	-40 °C to +125 °C
Terminals Material:	Silver plated zinc
Housing Material:	PA66 (U.L. 94 Flammability rating – HB)
Net Weight Per Fuse:	0.4 g ± 15%
Complies with:	ISO 8820-9

*Silver plating allows up to 150°C at the interface.

Features & Benefits

- Color coding shows the amperage rating for each fuse
- High-contrast amperage stamp on the top of the housing aids identification
- See-through housing makes it easy to check whether a fuse has blown
- Simple to install and remove
- Checkpoints on top make it possible to measure resistance without removing the fuse
- Offers additional material savings by reducing the need for sockets

Applications

- Cars
- Off-road Vehicles
- Trucks
- Buses
- SUVs
- Watercraft as approved by Littelfuse®








Ordering Information

Part Number	Rating	Package Size
0891xxx.NXWS	5–30	5000

LOW PROFILE MINI® 10.9 Blade Fuses

Rated 58V

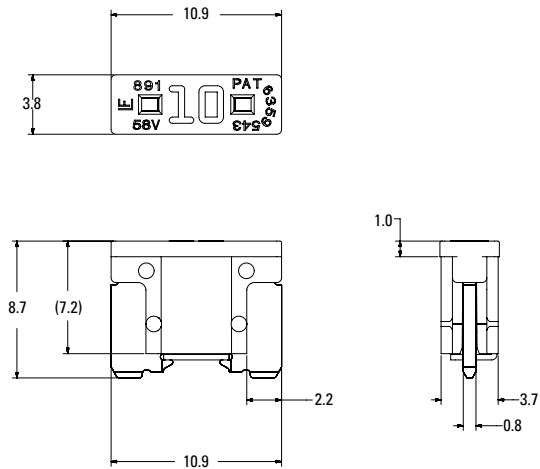
Ratings

Part Number	Current Rating (A)	Housing Material Color	Test Cable Size (mm ²)	Typ. Voltage Drop (mV)	Typ. Cold Resistance (mΩ)	Typ. I ² t (A ² s)
0891005._	5		0.5	114	17.21	22
089107.5._	7.5		0.75	105	10.65	53
0891010._	10		1	97	7.59	102
0891015._	15		1.5	75	4.70	198
0891020._	20		2.5	99	3.35	420
0891025._	25		2.5	96	2.56	613
0891030._	30		4	96	2.06	1 100

The typical I²t is an average value calculated from the breaking capacity tests by using the melting time before the arcing occurs.

Dimensions

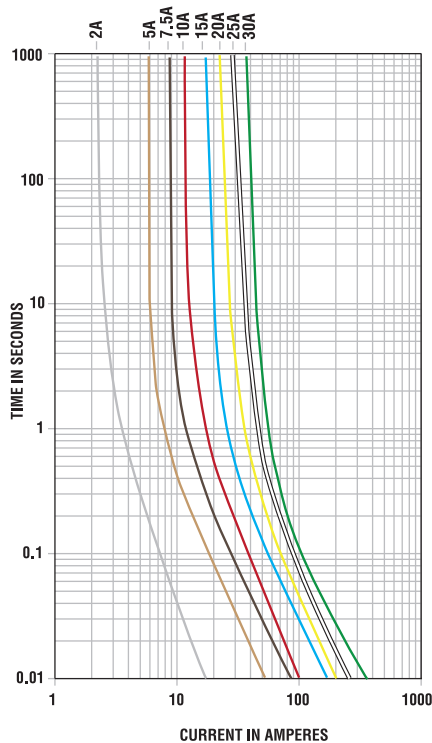
Dimensions in mm for reference only.
See outline drawing for dimensions and tolerances.



LOW PROFILE MINI® 10.9 Blade Fuses

Rated 58V

Time-Current Characteristic Curves



Time-Current Characteristics

% of Rating	Opening Time Min / Max (s)
110	360 000 / ∞
135	0.75 / 120
200	0.15 / 5
350	0.08 / 0.25
600	0.03 / 0.1

Typical Derating of Fuse Melting Element

Temperature Security Margin is 20%
 Please contact Littelfuse® for Details Regarding Derating Test Set-Up.

Temperature Table

X-ON Electronics

Largest Supplier of Electrical and Electronic Components

Click to view similar products for [Automotive Fuses](#) category:

Click to view products by [Littelfuse](#) manufacturer:

Other Similar products are found below :

[ATM-4LP](#) [299080](#) [HBO-70](#) [0287015](#) [FMM-15](#) [0297003.WXT](#) [0695060.PXPS](#) [MRBF-075](#) [MRBF-300](#) [MRBF-200](#) [ANX80-UL-20A](#)
[ANX80-UL-25A](#) [ANX80-UL-30A](#) [ANX80-UL-35A](#) [ANX80-UL-40A](#) [ANT-I-3A](#) [APM-I-25A](#) [APR-10A](#) [APR-25A](#) [ANX58-UL-20A](#)
[ANX58-UL-25A](#) [ANX58-UL-35A](#) [ANX58-UL-40A](#) [ANX58-UL-50A](#) [ANM-4A](#) [ANM-25A](#) [ANE-175A](#) [APM-25A](#) [APM-4A](#) [ACB2-PL-](#)
[15A](#) [ACB2-PL-25A](#) [ANM58-15A](#) [ANM58-5A](#) [FMX-LP-20A](#) [MIDA-50A](#) [0695040.PXP](#) [0327030.YX2T](#) [0298500.UX1M8](#) [0299070.ZXT](#)
[20A32V](#) [ATM-1](#) [MRBF-040](#) [MRBF-100](#) [MRBF-250](#) [MRBF-050](#) [MRBF-060](#) [CFCOVER-2R](#) [MRBF-030](#) [3298600.ZXM10](#) [AMG-80](#)