



FUSE AND
FUSEHOLDER
PRODUCT GUIDE



COMMERCIAL VEHICLE PRODUCTS

F-1304



Expertise Applied | Answers Delivered

LITTELFUSE PACKAGING



Carton

Carton. The outer corrugated cardboard box that holds several inner packs, or bulk fuses (no inner packs).

Inner Pack

A small chipboard box containing several blister packs or pillboxes.

Blister Pack

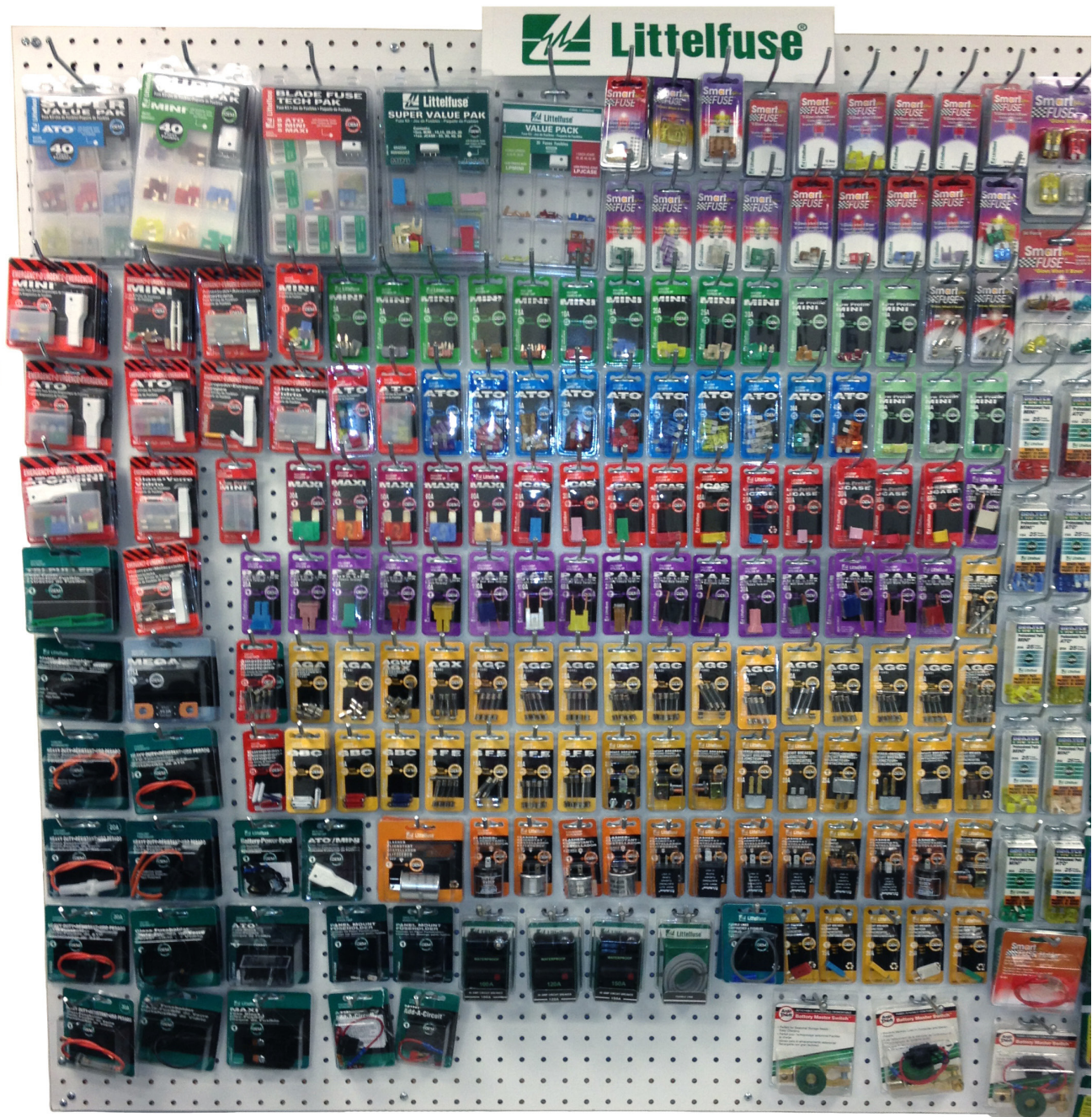
A retail package containing one or several identical products, such as fuses, or it may contain an assortment of fuses. BPs are designed to fit on a peg-hook. The abbreviation BP includes bubble packs and clamshell packs.

Pillbox

A small plastic box containing fuses. Pillboxes are snap-shut resealable.

RETAIL PACKAGING

We can develop a retail packaging display for your store, with both Littelfuse and Cole Hersee brand products. Talk to your Littelfuse Commercial Vehicle Products rep.

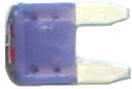


KNOW YOUR FUSES



Low Profile MINI® Blade Fuse

For vehicle voltages up to 58V. Amperages 2A to 30A. Same performance as MINI, but with a smaller body height.



MINI® Blade Fuse

Amperages 2A to 30A

A type that's rapidly becoming the standard for electrical protection, with an exceptionally wide operating temperature range of -40°F to 250°F. The big advantage of MINI is that you can get more fuses into a small fusebox.



ATO® Blade Fuse

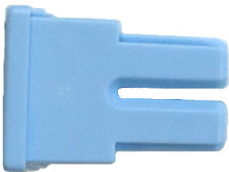
The very popular two-blade fuse originated and patented by Littelfuse in 1976. Amperages 1A to 40A

Also available in SmartGlow® "It glows when it blows"



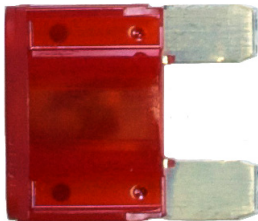
JCASE® Cartridge Fuse

Amperages 20A to 60A. Cartridge fuses are compact and incorporate a design advantage over blade fuses: Over time the spring clips that hold blade fuses will weaken. In cartridge fuses, the weaker female part is designed into the disposable fuse so that the grip and electrical connection will never weaken.



PAL Fuse

Available in several body types. Commonly used in many Asian vehicles.



MAXI® Blade Fuse

Amperages 20A to 80A

Also available in SmartGlow® "It glows when it blows"



MIDI® Bolt-Down Fuse

Amperages 30A to 200A. this compact fuse can replace the MAXI fuse or a fusible link.

Also available in SmartGlow® "It glows when it blows"

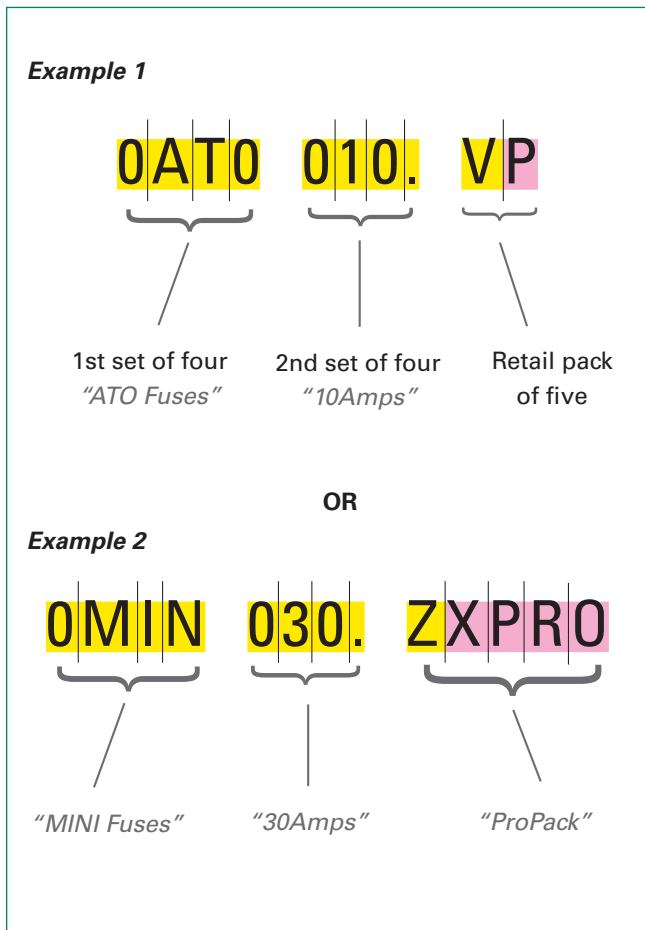


MEGA® Bolt-Down Fuse

Amperages 40A to 500A.

MIDI and MEGA are ideal for protection of heavy electrical cables that connect the battery and alternator. Designed to replace Fusible Links, which have less precise parameters, and which can cause thermal events when they blow. MEGA fuses are more reliable, and can be readily replaced, whereas Fusible Links need to be cut out and soldered back in place.

EXAMPLES OF ORDER NUMBERS



Description

Order numbers must have 9 characters, and may have up to six additional characters at the end of the string. These are for added description, such as ZXPRO. When you place an order, write or type the characters without a break in the string.

Mandatory Characters

First set of four (yellow)

These identify the product group, like LMIN (Low profile MINI fuse) or 0MAX (MAXI fuses).

Second set of four (yellow)

These identify the product subgroup. In fuses, this usually identifies the amperage. The decimal point counts as one character, eg 010. = 10A, 100. = 100A, 01.5 = 1.5A.

Ninth character (yellow)

Inner pack quantity. See list of codes below.

Inner Pack Codes

| Quantity Code | Quantity |
|---------------|---------------|
| X | 1 |
| V | 5 |
| T | 10 |
| S | 20 |
| L | 50 |
| H | 100 |
| F | 200 |
| G | 250 |
| U | 500 |
| M | 1000 |
| D | 1500 |
| E | 2500 |
| W | 3000 |
| Y | 4000 |
| N | 5000 |
| K | 10,000 |
| Z | Miscellaneous |

Optional Characters

Tenth character (pink)

Packaging type. P= Retail pack, B=Blister Pack.

Last set of five (pink)

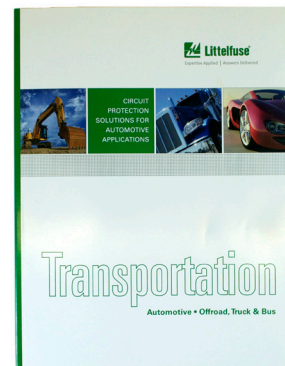
May be used to give additional information, like MXGLO for SmartGlow fuses.

TABLE OF CONTENTS

| | |
|--------------------------------------|-----------|
| Boxes & Holders | 8 |
| Fuses & Fuseholders | 9 |
| MINI blade fuses | 9 |
| Low Profile MINI blade fuses | 11 |
| ATO blade fuses | 12 |
| MAXI blade fuses | 15 |
| JCASE cartridge fuses | 17 |
| MIDI bolt-down fuses | 18 |
| MEGA bolt-down fuses | 19 |
| PAL fuses | 21 |
| SFE glass fuses | 22 |
| AG glass fuses | 23 |
| CF8 battery clamp fuses | 25 |
| GBC ceramic fuses | 25 |
| Circuit Breakers | 26 |
| Junction Blocks | 27 |

TRANSPORTATION CATALOG TB101-A PAGE REFERENCE

| Product Type | Page number in Littelfuse catalog | Page number in this product guide |
|---------------------------|-----------------------------------|-----------------------------------|
| 2+2 Fuseholder | 89 | 6 |
| 5AG glass fuses | not in TB101-A catalog | 22 |
| AGA glass fuses (1AG) | not in TB101-A catalog | 21 |
| AGC fuseholders (3AG) | not in TB101-A catalog | 22 |
| AGC glass fuses (3AG) | not in TB101-A catalog | 21 |
| AGW glass fuses (7AG) | not in TB101-A catalog | 22 |
| AGW/AGX assortment | not in TB101-A catalog | 22 |
| ATO & MINI diagnostic kit | not in TB101-A catalog | 7 |
| ATO emergency kit | not in TB101-A catalog | 7 |
| ATO fuseholders | 127 | 12 |
| ATO fuses | 15 & 17 | 10 |
| ATO SmartGlow fuses | not in TB101-A catalog | 11 |
| Blade fuse Tech Pack | not in TB101-A catalog | 12 |
| Breakers | not in TB101-A catalog | 24 |
| CF8 terminal fuses | 60 | 23 |
| Circuit Breakers | not in TB101-A catalog | 24 |
| Fuse puller | 161 | 22 |
| GBC thermoplastic fuses | not in TB101-A catalog | 23 |
| HWB18 PDM | not in TB101-A catalog | 6 |
| HWB60 PDM | 86 | 6 |
| JCASE fuseholders | 132 | 15 |
| JCASE fuses | 38 | 15 |
| Junction Blocks | 92 | 25 |
| Low profile MINI fuses | 13 | 9 |
| MAXI fuseholders | 130 | 14 |
| MAXI fuses | 26 | 13 |
| MAXI SmartGlow fuses | not in TB101-A catalog | 14 |
| MEGA fuseholders | 153 & 154 | 18 |
| MEGA fuses | 51 | 17 |
| MIDI fuseholders | 151 & 152 | 16 |
| MIDI fuses | 45 | 16 |
| MINI fuseholders | 126 | 8 |
| MINI fuses | 6 | 7 |
| MINI SmartGlow fuses | not in TB101-A catalog | 8 |
| PAL fuses | 71 onwards | 19 |
| SFE glass fuses | not in TB101-A catalog | 20 |



Littelfuse TB101-A Catalog



Sealed compact boxes to hold and connect fuses, breakers and other components.

| Part Description | Part Number | Packaging | What comes in an order |
|------------------------------|--------------|----------------|---|
| HWB60 | PDM21001LXM | <i>Code L.</i> | 50 HWB60 fuseboxes in bulk in a carton |
| HWB18 & *TPAs & bracket | PDM31001ZXM | <i>Code Z.</i> | 36 HWB18 fuseboxes in bulk in a carton |
| HWB18 & *TPAs | PDM31002ZXM | | |
| HWB18 only | PDM31003ZXM | | |
| 2+2 Mini-Fuse & JCASE Holder | BPDMA104HXF1 | <i>Code H.</i> | 100 2+2 fuseholders in bulk in a carton |

*TPA: Terminal Position Assurance lock



Hot Feed Sheets:
D-637 HWB 60
D-636 HWB 18
D-629 2+2



HWB 60 Sealed Hardwired Box

Accepts up to 30 280-style components



HWB 18 Sealed Hardwired Box

Accepts up to 9 280-style components (MINI fuses and 280 series relays)



2 + 2 Fuseholder

Accepts 2 MINI and 2 JCASE fuses

MINI[®] BLADE FUSES AND FUSEHOLDERS



A fuse that's rapidly becoming the standard for vehicle circuit protection. Wide temperature range -40°C to 125°C. 10.9mm wide. Rated 32V. Silver plated blades. SmartGlow rated 12V.

OMIN Series (Corresponds to 0297 Series in catalog)

| Part Number | Amps | Packaging | What comes in an order |
|---------------|------|------------------------------|---|
| OMIN002.VP | 2A | <i>Code VP.</i> | 5 MINI fuses per blister pack x 5BPs = 25 fuses |
| OMIN003.VP | 3A | | |
| OMIN004.VP | 4A | | |
| OMIN005.VP | 5A | | |
| OMIN07.5VP | 7.5A | | |
| OMIN010.VP | 10A | | |
| OMIN015.VP | 15A | | |
| OMIN020.VP | 20A | | |
| OMIN025.VP | 25A | | |
| OMIN030.VP | 30A | | |
| OMIN002.V | 2A | <i>Code V.</i> | 5 MINI fuses per pillbox x 20 pillboxes = 100 fuses |
| OMIN003.V | 3A | | |
| OMIN004.V | 4A | | |
| OMIN005.V | 5A | | |
| OMIN07.5V | 7.5A | | |
| OMIN010.V | 10A | | |
| OMIN015.V | 15A | | |
| OMIN020.V | 20A | | |
| OMIN025.V | 25A | | |
| OMIN030.V | 30A | | |
| OMIN010.ZXPRO | 10A | <i>Code ZXPRO, Pro-Pack.</i> | 25 MINI fuses per ProPack x 5 ProPacks = 125 fuses |
| OMIN015.ZXPRO | 15A | | |
| OMIN020.ZXPRO | 20A | | |
| OMIN025.ZXPRO | 25A | | |
| OMIN030.ZXPRO | 30A | | |



Fuse Kits

| Part Number | Amps | Packaging | What comes in an order |
|-------------|----------|--|--|
| 00940479ZP | Assorted | <i>ATO MINI diagnostic emergency kit, Code ZP.</i> | 5 kits of assorted ATO & MINI plus a tester/puller |
| 00940475Z | --- | <i>ProPack kit, Code Z.</i> | 5 kits of 5 MAXI and assortment of ATO & MINI plus pullers for ATO/MINI and MAXI |

MINI[®] BLADE FUSES AND FUSEHOLDERS



SmartGlow fuses feature an indicator light that glows when the fuse has blown - "When it blows it glows." Makes troubleshooting simple.

SmartGlow feature is available in MINI, ATO and MAXI.

0MIN Series SmartGlow MINI Fuses

| Part Number | Amps | Packaging | What comes in an order |
|---------------|------|-----------------------------------|--|
| 0MIN003.VPGLO | 3A | <i>SmartGlow, Code VPGLO.</i> | 2 SmartGlow MINI fuses per blister pack x 5BPs = 10 fuses |
| 0MIN005.VPGLO | 5A | | |
| 0MIN07.5VPGLO | 7.5A | | |
| 0MIN010.VPGLO | 10A | | |
| 0MIN015.VPGLO | 15A | | |
| 0MIN020.VPGLO | 20A | | |
| 0MIN025.VPGLO | 25A | | |
| 0MIN030.VPGLO | 30A | | |
| 0MIN003.VXGLO | 3A | <i>SmartGlow, Code VXGLO.</i> | 5 SmartGlow MINI fuses per pillbox x 20 pillboxes = 100 fuses |
| 0MIN005.VXGLO | 5A | | |
| 0MIN07.5VXGLO | 7.5A | | |
| 0MIN010.VXGLO | 10A | | |
| 0MIN015.VXGLO | 15A | | |
| 0MIN020.VXGLO | 20A | | |
| 0MIN025.VXGLO | 25A | | |
| 0MIN030.VXGLO | 30A | | |



MINI Fuseholders

| Part Number | Amps | Packaging | What comes in an order |
|-------------|-------------|-----------------------------------|--|
| 0FHM001XP | 20A (14AWG) | <i>Inline fuseholder, Code XP</i> | 1 fuseholder per blister pack x 5BPs = 5 fuseholders |
| 0FHM002XP | 30A (12AWG) | <i>Inline fuseholder, Code XP</i> | 1 fuseholder per blister pack x 5BPs = 5 fuseholders |
| 0FHM001SXJ | 20A (14AWG) | <i>Inline fuseholder, Code S</i> | 20 fuseholders bulk in carton = 20 fuseholders |
| 0FHM002SXJ | 30A (12AWG) | <i>Inline fuseholder, Code S</i> | 20 fuseholders bulk in carton = 20 fuseholders |
| 0FHM0001LXN | 20A (14AWG) | <i>Inline fuseholder, Code Z</i> | 50 fuseholders bulk in carton = 50 fuseholders |
| 0FHM0002LXN | 30A (12AWG) | <i>Inline fuseholder, Code Z</i> | 50 fuseholders bulk in carton = 50 fuseholders |
| 0FHM001ZXJ | 20A (14AWG) | <i>Inline fuseholder, Code Z</i> | 1000 fuseholders bulk in carton = 1000 fuseholders |
| 0FHM002ZXJ | 30A (12AWG) | <i>Inline fuseholder, Code Z</i> | 1000 fuseholders bulk in carton = 1000 fuseholders |

LOW PROFILE MINI[®] BLADE FUSES



Same performance as a MINI, but with a smaller overall height, achieved by locating the terminals into the body. 10.9mm wide. Rated 58V.

LMIN Series (Corresponds to 0891 Series in catalog)

| Part Number | Amps | Packaging | What comes in an order |
|-------------|----------|-----------|---|
| LMIN005.VP | 5A | Code VP. | 5 Low Profile MINI fuse per blister pack x 5BPs= 25 fuses |
| LMIN010.VP | 10A | | |
| LMIN015.VP | 15A | | |
| LMIN020.VP | 20A | | |
| LMIN025.VP | 25A | | |
| LMIN030.VP | 30A | | |
| LMIN002.V | 2A | Code V. | 5Low Profile MINI fuses per pillbox x 20 pillboxes = 100 fuses |
| LMIN005.V | 5A | | |
| LMIN07.5V | 7.5A | | |
| LMIN010.V | 10A | | |
| LMIN015.V | 15A | | |
| LMIN020.V | 20A | | |
| LMIN025.V | 25A | | |
| LMIN030.V | 30A | | |
| 00904506ZP | Assorted | --- | 6 Low Profile MINI fuses per blister pack x 5 BPs = 30 fuses |



MINI fuse has standard blades



Low Profile MINI fuse has blades that are set back

ATO® BLADE FUSES & FUSEHOLDERS



The very popular two-blade fuse, 19.1mm wide. Rated 32V. Patented and introduced by Littelfuse in 1976.

0ATO Series Fuses

| Part Number | Amps | Packaging | What comes in an order |
|----------------|------|------------------------------|---|
| 0ATO001.VP | 1A | <i>Code VP.</i> | 5 ATO fuses per blister pack x 5BPs = 25 fuses |
| 0ATO002.VP | 2A | | |
| 0ATO003.VP | 3A | | |
| 0ATO004.VP | 4A | | |
| 0ATO005.VP | 5A | | |
| 0ATO007.5VP | 7.5A | | |
| 0ATO010.VP | 10A | | |
| 0ATO015.VP | 15A | | |
| 0ATO020.VP | 20A | | |
| 0ATO025.VP | 25A | | |
| 0ATO030.VP | 30A | | |
| 0ATO040.VP | 40A | | |
| 0ATO001.V | 1A | | |
| 0ATO002.V | 2A | | |
| 0ATO003.V | 3A | | |
| 0ATO004.V | 4A | | |
| 0ATO005.V | 5A | | |
| 0ATO007.5V | 7.5A | | |
| 0ATO010.V | 10A | | |
| 0ATO015.V | 15A | | |
| 0ATO020.V | 20A | | |
| 0ATO025.V | 25A | | |
| 0ATO030.V | 30A | | |
| 0ATO040.V | 40A | | |
| 0ATO005.ZXPRO | 5A | <i>Pro-Pack, Code ZXPRO.</i> | 25 ATO fuses per ProPack x 5 ProPacks = 125 fuses |
| 0ATO007.5ZXPRO | 7.5A | | |
| 0ATO010.ZXPRO | 10A | | |
| 0ATO015.ZXPRO | 15A | | |
| 0ATO020.ZXPRO | 20A | | |
| 0ATO025.ZXPRO | 25A | | |
| 0ATO030.ZXPRO | 30A | | |



ATO® BLADE FUSES & FUSEHOLDERS

0287 Series Fuses (Bulk) Fuses

| Part Number | Amps | Packaging | What comes in an order |
|-------------|------|----------------|--|
| 0287001.U | 1A | <i>Code U.</i> | 500 ATO fuses bulk in carton = 500 fuses |
| 0287003.U | 3A | | |
| 0287004.U | 4A | | |
| 0287005.U | 5A | | |
| 028707.5U | 7.5A | | |
| 0287010.U | 10A | | |
| 0287015.U | 15A | | |
| 0287020.U | 20A | | |
| 0287025.U | 25A | | |
| 0287030.U | 30A | | |
| 0287040.U | 40A | | |



0ATO Series SmartGlow Fuses

| Part Number | Amps | Packaging | What comes in an order |
|----------------|----------|--------------------|---|
| 0ATO005.VPGLO | 5A | <i>Code VPGLO.</i> | 2 ATO SmartGlow fuses per blister pack x 6BPs = 12 fuses |
| 0ATO010.VPGLO | 10A | | |
| 0ATO015.VPGLO | 15A | | |
| 0ATO020.VPGLO | 20A | | |
| 0ATO025.VPGLO | 25A | | |
| 0ATO030.VPGLO | 30A | | |
| 0ATO010.TPGLO | 10A | <i>Code TPGLO.</i> | 10 ATO SmartGlow fuses per blister pack x 6BPs = 60 fuses |
| 0ATO015.TPGLO | 15A | | |
| 0ATO020.TPGLO | 20A | | |
| 0ATO025.TPGLO | 25A | | |
| 0ATO030.TPGLO | 30A | | |
| 0ATO003.MXGLO | 3A | <i>Code MXGLO.</i> | 1000 SmartGlow fuses bulk in carton = 1000 fuses |
| 0ATO005.MXGLO | 5A | | |
| 0ATO07.5MXGLO | 7.5A | | |
| 0ATO010.MXGLO | 10A | | |
| 0ATO015.MXGLO | 15A | | |
| 0ATO020.MXGLO | 20A | | |
| 0ATO025.MXGLO | 25A | | |
| 0ATO030.MXGLO | 30A | | |
| 00940202ZPGLO5 | Assorted | <i>Code ZP.</i> | 5 SmartGlow fuses per blister pack x 5BPs = 125 |

ATO® BLADE FUSES & FUSEHOLDERS

Assortments and Fuse Pullers

| Part Number | Amps | Packaging | What comes in an order |
|-------------|----------|--|---|
| 00940370ZP | Assorted | <i>Emergency kit, Code ZP</i> | Kit of 6 assorted ATO fuses plus a puller x 5 kits = 60 fuses |
| 00940479ZP | Assorted | <i>ATO MINI diagnostic emergency kit, Code ZP.</i> | Kit of 5 MAXI + assortment of ATO & MINI + pullers for ATO/MINI/MAXI x 5 kits = 10 kits |
| 00940475Z | Assorted | <i>Blade fuse tech pak, Code Z.</i> | Kit of 5 MAXI + assortment of ATO & MINI + pullers for ATO/MINI/MAXI x 5 kits = 10 kits |
| 00940416Z | Assorted | <i>Code Z.</i> | 5 assorted ATO fuses per pillbox x 200 pillboxes = 1000 fuses |
| 00970019XP | --- | <i>Code XP.</i> | 1 ATO tester/puller per blister pack x 5 BPs = 5 tester/pullers |



ATO tester/puller

ATO Inline Fuseholders

| Part Number | Amps | Packaging | What comes in an order |
|-------------|-------------|--------------------------------------|---|
| 0FHA0001XP | 20A (16AWG) | <i>Fuseholder, Code XP</i> | 1 inline fuseholder per blister pack x 5BPs = 5 fuseholders |
| 0FHA0002XP | 30A (12AWG) | <i>Fuseholder, Code XP</i> | 1 inline fuseholder per blister pack x 5BPs = 5 fuseholders |
| 0FHA001SXJ | 20A (16AWG) | <i>Fuseholder, Code S</i> | 20 inline fuseholders bulk in carton = 20 fuseholders |
| 0FHA002SXJ | 30A (12AWG) | <i>Fuseholder, Code S</i> | 20 inline fuseholders bulk in carton = 20 fuseholders |
| 0FHA0001ZXJ | 20A (16AWG) | <i>Fuseholder, Code Z</i> | 1000 inline fuseholders bulk in carton = 1000 fuseholders |
| 0FHA0002ZXJ | 30A (12AWG) | <i>Fuseholder, Code Z</i> | 1000 inline fuseholders bulk in carton = 1000 fuseholders |
| FHAC001XP | 20A (16AWG) | <i>Fuseholder with cover, Code S</i> | 1 inline useholder per blister pack x 5BPs = 5 fuseholders |
| FHAC002XP | 30A (12AWG) | <i>Fuseholder with cover, Code S</i> | 1 inline fuseholder per blister pack x 5BPs = 5 fuseholders |
| FHAC001SXJ | 20A (16AWG) | <i>Fuseholder with cover, Code S</i> | 20 inline fuseholders bulk in carton = 20 fuseholders |
| FHAC002SXJ | 30A (12AWG) | <i>Fuseholder with cover, Code S</i> | 20 inline fuseholders bulk in carton = 20 fuseholders |
| FHAC001ZXJ | 20A (16AWG) | <i>Fuseholder with cover, Code Z</i> | 1000 inline fuseholders bulk in carton = 1000 fuseholders |
| FHAC002ZXJ | 30A (12AWG) | <i>Fuseholder with cover, Code Z</i> | 1000 inline fuseholders bulk in carton = 1000 fuseholders |

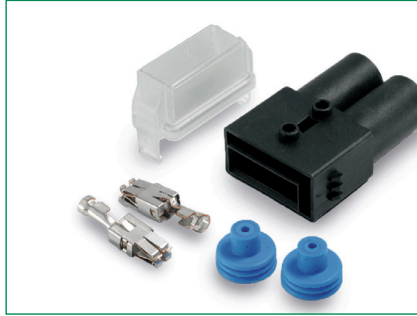


ATO inline fuseholder



ATO inline fuseholder with cover

MAXI® BLADE FUSES & FUSEHOLDERS



Polymer body resists high temperatures that may be encountered under the hood.
29.2mm wide. Rated 32V. Silver-plated blades.

OMAX & 0299 SERIES FUSES

| Part Number | Amps | Packaging | What comes in an order |
|--------------|------|---|---|
| OMAX020.XP | 20A | <i>Code XP.</i> | 1 MAXI fuse per blister pack x 5BPs = 5 fuses |
| OMAX030.XP | 30A | | |
| OMAX040.XP | 40A | | |
| OMAX050.XP | 50A | | |
| OMAX060.XP | 60A | | |
| OMAX070.XP | 70A | | |
| OMAX080.XP | 80A | | |
| OMAX020.X | 20A | <i>Code X.</i> | 1 MAXI fuse per pillbox x 10 pillboxes = 10 fuses |
| OMAX030.X | 30A | | |
| OMAX040.X | 40A | | |
| OMAX050.X | 50A | | |
| OMAX060.X | 60A | | |
| OMAX070.X | 70A | | |
| OMAX080.X | 80A | | |
| 0299020.L | 20A | <i>Code L.</i> | 50 MAXI fuses bulk in carton = 50 fuses |
| 0299030.L | 30A | | |
| 0299040.L | 40A | | |
| 0299050.L | 50A | | |
| 0299060.L | 60A | | |
| 0299070.L | 70A | | |
| 0299080.L | 80A | | |
| 0299020.ZXNV | 20A | <i>MAXI OCR with vision. Code ZXNV.</i> | 1200 MAXI fuses bulk in carton = 1200 fuses |
| 0299030.ZXNV | 30A | | |
| 0299040.ZXNV | 40A | | |
| 0299050.ZXNV | 50A | | |
| 0299060.ZXNV | 60A | | |
| 0299070.ZXNV | 70A | | |
| 0299080.ZXNV | 80A | | |



MAXI® BLADE FUSES & FUSEHOLDERS

OMAX Series SmartGlow Fuses

| Part Number | Amps | Packaging | What comes in an order |
|---------------|------|--------------------|---|
| OMAX020.XPGLO | 20A | <i>Code XPGLO.</i> | 1 MAXI SmartGlow fuse per blister pack x 6 BPs = 6 fuses |
| OMAX030.XPGLO | 30A | | |
| OMAX040.XPGLO | 40A | | |
| OMAX050.XPGLO | 50A | | |
| OMAX060.XPGLO | 60A | | |
| OMAX070.XPGLO | 70A | | |
| OMAX080.XPGLO | 80A | | |
| OMAX100.XPGLO | 100A | | |
| OMAX020.HXGLO | 20A | <i>Code HXGLO.</i> | 100 MAXI SmartGlow fuses bulk in carton = 100 fuses |
| OMAX030.HXGLO | 30A | | |
| OMAX040.HXGLO | 40A | | |
| OMAX050.HXGLO | 50A | | |
| OMAX060.HXGLO | 60A | | |
| OMAX070.HXGLO | 70A | | |
| OMAX080.HXGLO | 80A | | |



MAXI fuseholder with cover

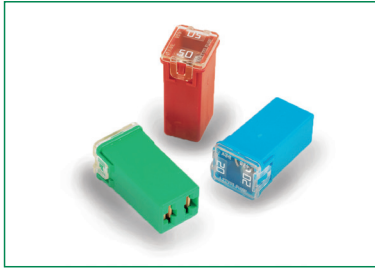


MAXI inline fuseholder with cover

Miscellaneous MAXI fuseholders & Assortments

| Part Number | | Packaging | What comes in an order |
|-------------|-----------------------------------|---------------------------------------|--|
| 01520001U | MAXI fuseholder | <i>Code U.</i> | 500 MAXI fuseholders bulk in carton = 500 fuseholders |
| 01520900U | MAXI fuseholder cover | <i>Code U.</i> | 500 MAXI fuseholder covers bulk in carton = 500 fuseholder covers |
| MAHC0001ZXJ | MAXI inline fuseholder with cover | <i>Inline fuseholder. Code Z.</i> | 10 MAXI fuseholders with covers bulk in carton = 10 fuseholders with cover |
| 00940475Z | Assorted | <i>Blade fuse Tech Pack</i> | Kit of 5 MAXI , assorted ATO & MINI + ATO/MINI tester/puller + MAXI puller x 5 kits = 5 kits |

JCASE® CARTRIDGE FUSES & FUSEHOLDERS



Cartridge style with female terminals, designed and patented by Littelfuse in 1997. 14.1mm wide. Rated 32V. Unique secondary locking feature holds fuse securely in place.

JCASE Series Fuses

| Part Number | Amps | Packaging | What comes in an order |
|-------------|------|-----------------|---|
| JCAS020.XP | 20A | <i>Code XP.</i> | 1 JCAS fuse per Blister Pack x 5 BPs = 5 fuses |
| JCAS030.XP | 30A | | |
| JCAS040.XP | 40A | | |
| JCAS050.XP | 50A | | |
| JCAS060.XP | 60A | | |
| JCAS020.X | 20A | <i>Code X.</i> | 1 JCAS fuse per pillbox x 10 pillboxes = 10 fuses |
| JCAS030.X | 30A | | |
| JCAS040.X | 40A | | |
| JCAS050.X | 50A | | |
| JCAS060.X | 60A | | |

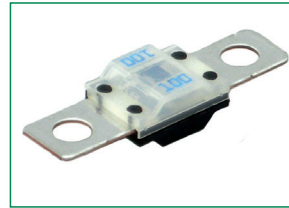
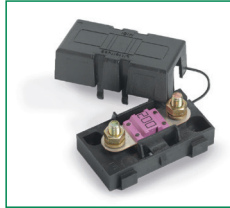
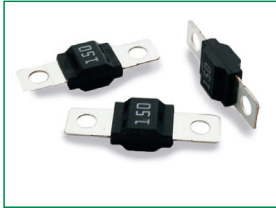


Fuseholder with bracket & cover Fuseholder

FHJC Series Inline Fuseholders (with integral covers)

| Part Number | | Packaging | What comes in an order |
|-------------|---|---------------|---|
| FHJC2001G | JCASE holder with bracket, 10AWG (up to 40A). | <i>Code G</i> | 250 JCAS fuseholders bulk in a carton = 250 fuseholders |
| FHJC2002G | JCASE holder with bracket, 8AWG (up to 60A). | | |
| FHJC2002L | JCASE holder with bracket, 8AWG (up to 60A). | <i>Code L</i> | 50 JCAS fuseholders bulk in a carton = 50 fuseholders |
| FHJC1001G | JCASE holder, 10AWG (up to 40A). | <i>Code G</i> | 250 JCAS fuseholders bulk in a carton = 250 fuseholders |
| FHJC1002G | JCASE holder, 8AWG (up to 60A). | | |
| FHJC1002L | JCASE holder, 8AWG (up to 60A). | <i>Code L</i> | 50 JCAS fuseholders bulk in a carton = 50 fuseholders |

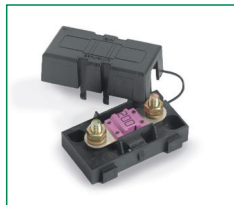
MIDI® BOLT-DOWN FUSES & FUSEHOLDERS



For high currents 30 to 200A. Designed and patented by Littelfuse. 41.1mm from end to end. Rated 32V.

0498 Series Fuses

| Part Number | Amps | Packaging | What comes in an order |
|-------------|------|---|--|
| 0498030.SXT | 30A | <i>Transparent housing. Code S.</i> | 20 MIDI fuses bulk per carton = 20 fuses |
| 0498040.SXT | 40A | | |
| 0498050.SXT | 50A | | |
| 0498060.SXT | 60A | | |
| 0498070.SXT | 70A | | |
| 0498080.SXT | 80A | | |
| 0498100.SXT | 100A | | |
| 0498125.SXT | 125A | | |
| 0498150.SXT | 150A | | |
| 0498175.SXT | 175A | | |
| 0498200.SXT | 200A | | |
| 0498030.H | 30A | <i>Code H.</i> | 100 MIDI fuses bulk per carton = 100 fuses |
| 0498040.H | 40A | | |
| 0498050.H | 50A | | |
| 0498060.H | 60A | | |
| 0498070.H | 70A | | |
| 0498080.H | 80A | | |
| 0498100.H | 100A | | |
| 0498125.H | 125A | | |
| 0498150.H | 150A | | |
| 0498175.H | 175A | | |
| 0498200.H | 200A | | |

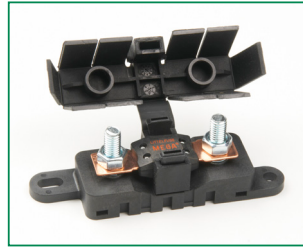
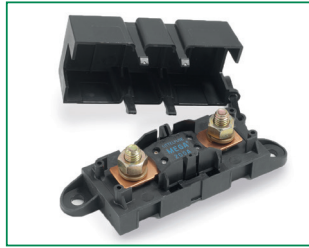


MIDI inline fuseholder (Left)
MIDI covered fuseholder (Right)

0498 Series Fuseholders

| Part Number | Amps | Packaging | What comes in an order |
|--------------|----------|----------------|--|
| 04980900S | 200A Max | <i>Code S.</i> | 20 MIDI covered fuseholders bulk per carton = 20 fuseholders |
| 04980921GXM5 | 200A Max | <i>Code G.</i> | 250 MIDI inline fuseholders bulk per carton = 20 fuseholders |
| 04980921.L | 200A Max | <i>Code L.</i> | 50 MIDI inline fuseholders bulk per carton = 50 fuseholders |
| 04980921.X | 200A Max | <i>Code X.</i> | 1 MIDI holder per pillbox x 10 pillboxes = 10 fuseholders |

MEGA® BOLT-DOWN FUSES & FUSEHOLDERS



For high currents up to 500A. Ideal for battery and alternator protection, and for use with heavy gauge cable. Patented by Littelfuse. Rated 32V.

OMEG Series Fuses

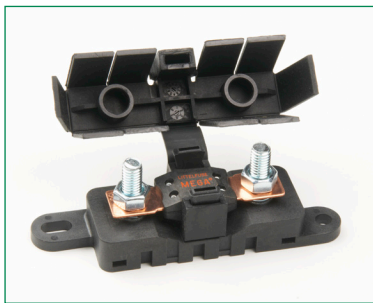
| Part Number | Amps | Packaging | What comes in an order |
|-------------|------|-----------------|---|
| 0MEG100.XP | 100A | <i>Code XP.</i> | 1 MEGA fuse per Blister Pack x 5 BPs = 5 fuses |
| 0MEG125.XP | 125A | | |
| 0MEG150.XP | 150A | | |
| 0MEG175.XP | 175A | | |
| 0MEG200.XP | 200A | | |
| 0MEG225.XP | 225A | | |
| 0MEG250.XP | 250A | | |
| 0MEG100.X | 100A | <i>Code X.</i> | 1 MEGA fuse per pillbox x 10 pillboxes = 10 fuses |
| 0MEG125.X | 125A | | |
| 0MEG150.X | 150A | | |
| 0MEG175.X | 175A | | |
| 0MEG200.X | 200A | | |
| 0MEG225.X | 225A | | |
| 0MEG250.X | 250A | | |
| 0MEG300.X | 300A | | |
| 0MEG350.X | 350A | | |
| 0MEG400.X | 400A | | |
| 0MEG450.X | 450A | | |
| 0MEG500.X | 500A | | |
| 0MEG100.L | 100A | <i>Code L.</i> | 50 MEGA fuses bulk per carton = 50 fuses |
| 0MEG125.L | 125A | | |
| 0MEG150.L | 150A | | |
| 0MEG175.L | 175A | | |
| 0MEG200.L | 200A | | |
| 0MEG225.L | 225A | | |
| 0MEG250.L | 250A | | |
| 0MEG300.L | 300A | | |
| 0MEG350.L | 350A | | |
| 0MEG400.L | 400A | | |
| 0MEG450.L | 450A | | |
| 0MEG500.L | 500A | | |



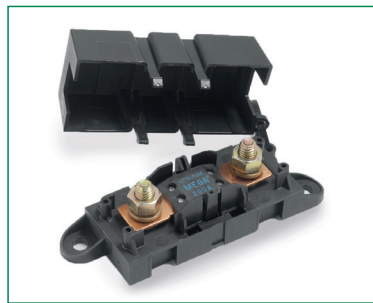
MEGA® BOLT-DOWN FUSES & FUSEHOLDERS

0298 Series MEGA Fuses (Bulk)

| Part Number | Amps | Packaging | What comes in an order |
|--------------|------|----------------|--|
| 0298080.ZXEH | 80A | <i>Code Z.</i> | 500 MEGA fuses bulk per carton = 500 fuses |
| 0298100.ZXEH | 100A | | |
| 0298125.ZXEH | 125A | | |
| 0298150.ZXEH | 150A | | |
| 0298175.ZXEH | 175A | | |
| 0298200.ZXEH | 200A | | |
| 0298225.ZXEH | 225A | | |
| 0298250.ZXEH | 250A | | |
| 0298300.ZXH | 300A | | |
| 0298350.ZXH | 350A | | |
| 0298400.ZXH | 400A | | |
| 0298450.ZXH | 450A | | |
| 0298500.ZXH | 500A | | |



New MEGA - Flex fuseholder with flexible cover accepts power cables from any direction. Holders interlock.

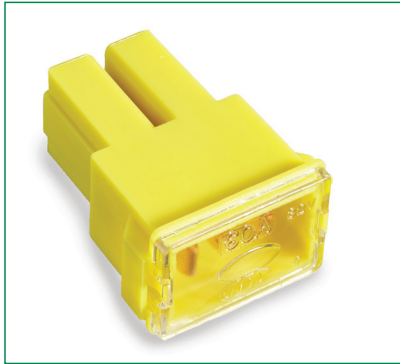


MEGA fuseholder

0298 Series MEGA Fuseholders

| Part Number | Amps | Packaging | What comes in an order |
|-----------------|------|----------------|---|
| 02981028HXFC | --- | <i>Code H.</i> | 100 MEGA-Flex fuseholders bulk per carton = 100 fuses |
| 02981028HXFC-SS | --- | <i>Code H.</i> | 100 MEGA-Flex stainless steel fuseholders bulk per carton = 100 fuses |
| 02980900Z | --- | <i>Code Z.</i> | 70 MEGA fuseholders bulk per carton = 70 fuses |
| 02981001ZXT | --- | <i>Code Z.</i> | 160 MEGA fuseholders bulk per carton = 160 fuses |

PAL FUSES



OPAL Series Fuses

| Part Number | Amps | Packaging | What comes in an order |
|-------------|------|-----------------|---|
| 0PAL020.X | 20A | <i>Code X.</i> | <i>Series 0</i> PAL 293 . 1 PAL fuse per pillbox x 10 pillboxes = 10 fuses |
| 0PAL030.X | 30A | | |
| 0PAL040.X | 40A | | |
| 0PAL050.X | 50A | | |
| 0PAL060.X | 60A | | |
| 0PAL020.XP | 20A | <i>Code XP.</i> | <i>Series 0</i> PAL 293 . 1 PAL fuse per Blister Pack x 5 BPs = 5 fuses |
| 0PAL030.XP | 30A | | |
| 0PAL040.XP | 40A | | |
| 0PAL050.XP | 50A | | |
| 0PAL060.XP | 60A | | |
| 0PAL160.XP | 60A | <i>Code XP.</i> | <i>Series 1</i> PAL 294 . 1 PAL fuse per Blister Pack x 5 BPs = 5 fuses |
| 0PAL180.XP | 80A | | |
| 0PAL1100XP | 100A | | |
| 0PAL1120XP | 120A | | |
| 0PAL4100X | 100A | <i>Code X.</i> | <i>Series 2</i> PAL 283B . 1 PAL fuse per pillbox x 10 pillboxes = 10 fuses |
| 0PAL330.XP | 30A | <i>Code XP.</i> | <i>Series 3</i> PAL 293B . 1 PAL fuse per Blister Pack x 5 BPs = 5 fuses |
| 0PAL340.XP | 40A | | |



Series 0
PAL293



Series 1
PAL294



Series 2
PAL283B



Series 3
PAL293B

SFE GLASS FUSES



Glass fuses that are designed to the standards of the SFE (Society of Fuse Engineers). All are 1/4" diameter, but vary in length according to amp rating. Rated 32V.

OSFE Series Fuses

| Part Number | Amps | Packaging | What comes in an order |
|-------------|----------|-----------------|--|
| OSFE004.V | 4A | <i>Code V.</i> | 5 SFE fuses per pillbox x 10 pillboxes = 50 fuses |
| OSFE006.V | 6A | | |
| OSFE07.5V | 7.5A | | |
| OSFE009.V | 9A | | |
| OSFE014.V | 14A | | |
| OSFE020.V | 20A | | |
| OSFE030.V | 30A | | |
| OSFE0001ZP | Assorted | <i>Code ZP.</i> | 7 assorted SFE fuses per Blister Pack x 5 BPs = 35 fuses |

AG SERIES GLASS FUSES



AG originally stood for 'all glass', and there are different kinds that vary in length and diameter. Rated 32V.

- AGA = 1AG
- AGC = 3AG
- AGU = 5AG
- AGW = 7AG
- AGX = 8AG

0AGA & 0AGC Series Fuses

| Part Number | Amps | Packaging | What comes in an order |
|-------------|----------|------------------|---|
| 0AGA01.5V | 1.5A | AGA 1AG. Code V. | 5 AGA 1AG fuses per pillbox x 10 pillboxes = 50 fuses |
| 0AGA002.V | 2A | | |
| 0AGA02.5V | 2.5A | | |
| 0AGA003.V | 3A | | |
| 0AGA005.V | 5A | | |
| 0AGA006.V | 6A | | |
| 0AGA07.5V | 7.5A | | |
| 0AGA010.V | 10A | | |
| 0AGA015.V | 15A | | |
| 0AGA020.V | 20A | | |
| 0AGA025.V | 25A | | |
| 0AGA030.V | 30A | | |
| 0AGA0001ZP | Assorted | Code ZP. | 10 assorted AGA 1AG fuses per Blister Pack x 5 BPs = 50 fuses |
| 0AGC.500V | .5A | Code V. | 5 AGC 3AG fuses per pillbox x 10 pillboxes = 50 fuses |
| 0AGC001.V | 1A | | |
| 0AGC01.5V | 1.5A | | |
| 0AGC002.V | 2A | | |
| 0AGC02.5V | 2.5A | | |
| 0AGC003.V | 3A | | |
| 0AGC004.V | 4A | | |
| 0AGC005.V | 5A | | |
| 0AGC006.V | 6A | | |
| 0AGC07.5V | 7.5A | | |
| 0AGC008.V | 8A | | |
| 0AGC010.V | 10A | | |
| 0AGC015.V | 15A | | |
| 0AGC020.V | 20A | | |
| 0AGC025.V | 25A | | |
| 0AGC030.V | 30A | | |
| 0AGC035.V | 35A | | |
| 0AGC0001ZP | Assorted | Code ZP. | 10 assorted AGC 3AG fuses per Blister Pack x 5 BPs = 50 fuses |

AG SERIES GLASS FUSES



AGU, AGW & AGX fuses

| Part Number | Amps | Packaging | What comes in an order |
|-------------|----------|-----------------|---|
| 0511030.M | 30A | <i>Code M.</i> | 50 AGU 5AG fuses bulk per carton = 50 fuses |
| 0511035.M | 35A | | |
| 0511050.M | 50A | | |
| 0AGW0001ZP | Assorted | <i>Code ZP.</i> | 10 assorted AGW/AGX fuses per Blister Pack x 5 BPs = 50 fuses |
| 0AGW001.V | 1A | <i>Code V.</i> | 5 AGW 7AG fuses per pillbox x 10 pillboxes = 50 fuses |
| 0AGW01.5V | 1.5A | | |
| 0AGW003.V | 3A | | |
| 0AGW004.V | 4A | | |
| 0AGW005.V | 5A | | |
| 0AGW006.V | 6A | | |
| 0AGW015.V | 15A | | |
| 0AGW020.V | 20A | | |
| 0AGW030.V | 30A | | |



Fuseholders & Fuse pullers

| Part Number | Amps | Packaging | What comes in an order |
|-------------|------|-----------------|---|
| 03420024Z | --- | <i>Code Z.</i> | 1 panel mount sealed military grade AGC 3AG fuseholder bulk per carton = 1 fuseholder |
| 00970023XP | --- | <i>Code XP.</i> | 1 Glass/ATO/MINI puller per Blister Pack x 5 BPs = 5 pullers |
| 00970023S | --- | <i>Code S.</i> | 20 Glass/ATO/MINI pullers bulk per carton = 20 pullers |

CF8 BATTERY TERMINAL FUSES



The fuse clamps onto a M8 sized battery post, using a battery clamp. A transparent cover allows visual inspection of fuse element. 50A - 300A.

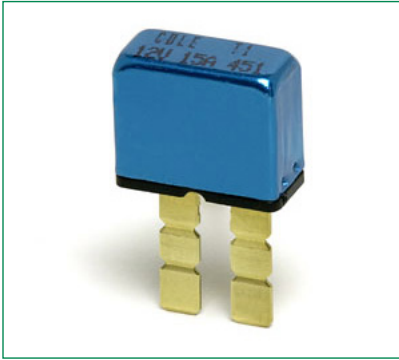
| Part Number | Amps | Packaging | What comes in an order |
|---------------|------|-----------|---|
| 155.0892.5501 | 50A | Code 1. | 100 CF8 fuses bulk per carton = 100 fuses |
| 155.0892.5751 | 75A | | |
| 155.0892.6101 | 100A | | |
| 155.0892.6121 | 125A | | |
| 155.0892.6151 | 150A | | |
| 155.0892.6171 | 175A | | |
| 155.0892.6201 | 200A | | |
| 155.0892.6251 | 250A | | |
| 155.0892.6301 | 300A | | |



A type of fuse with a heat-resistant ceramic body. The fuse element extends over the body from end to end. Bodies vary in color by amperage. Voltage rating 32V.

GBC Thermoplastic Fuses Series 0GBC

| Part Number | Amps | Packaging | What comes in an order |
|-------------|------|-----------|--|
| 0GBC005.V | 5A | Code V. | 5 GBC fuses per Blister Pack x 10 BPs = 50 fuses |
| 0GBC008.V | 8A | | |
| 0GBC016.V | 16A | | |
| 0GBC025.V | 25A | | |



ATO style, with break-off blades to fit different styles of fusebox.

| Part Number | Amps | Packaging | What comes in an order |
|-------------|------|--|---|
| 0UCB005.XP | 5A | <i>Universal ATO style Type II breaker. Code XP.</i> | One universal circuit breaker in a blister pack x 5BPs = 5 breakers |
| 0UCB010.XP | 10A | | |
| 0UCB015.XP | 15A | | |
| 0UCB020.XP | 20A | | |
| 0UCB025.XP | 25A | | |
| 0UCB030.XP | 30A | | |
| 0UCB005.X | 5A | <i>Universal ATO style Type II breaker. Code X.</i> | 100 universal circuit breakers bulk per carton = 100 breakers |
| 0UCB010.X | 10A | | |
| 0UCB015.X | 15A | | |
| 0UCB020.X | 20A | | |
| 0UCB025.X | 25A | | |
| 0UCB030.X | 30A | | |
| 0MCB020.X | 20A | <i>MAXI style Type I breaker. Code X.</i> | One MAXI breaker per pillbox x 10 pillboxes = 10 breakers |
| 0MCB030.X | 30A | | |
| 0MCB040.X | 40A | | |
| 0MXB020.X | 20A | <i>MAXI style Type II breaker. Code X.</i> | One MAXI breaker per pillbox x 10 pillboxes = 10 breakers |
| 0MXB030.X | 30A | | |
| 0MXB040.X | 40A | | |
| 0MIBB005.X | 5A | <i>MINI style Type II breaker. Code X.</i> | One MINI breaker per pillbox x 10 pillboxes = 10 breakers |
| 0MIBB010.X | 10A | | |
| 0MIBB015.X | 15A | | |
| 0MIBB020.X | 20A | | |
| 0MIBB025.X | 25A | | |
| 0MIBB030.X | 30A | | |



MAXI style breaker (Left)
MINI style breaker (right)

JUNCTION BLOCKS & FEED-THRU STUDS



Series JBPT

| Part Number | | Packaging | What comes in an order |
|-------------|-----|-----------|---|
| JBPT2P01ZXR | --- | Code Z. | 16 red feed-thru 1/2-13 studs bulk per carton = 16 feed-thru studs |
| JBPT4P01ZXB | --- | Code Z. | 16 black feed-thru 5/16-18 studs bulk per carton = 16 feed-thru studs |
| JBPT3P01ZXB | --- | Code Z. | 144 black feed-thru 3/8-16 studs bulk per carton = 144 feed-thru studs |
| JBPT3P02ZXB | --- | Code Z. | 128 red feed-thru 3/8-16 studs bulk per carton = 128 feed-thru studs |
| JBPT2N02ZXB | --- | Code Z. | 16 black junction blocks 1/2-13 bulk per carton = 16 junction blocks |
| JBPT2N03ZXB | --- | Code Z. | 16 black junction blocks 5/15-18 bulk per carton = 16 junction blocks |
| JBPT3N03ZXR | --- | Code Z. | 128 red junction blocks 3/8-16 bulk per carton = 128 junction blocks |
| JBPT3N03ZXB | --- | Code Z. | 128 black junction blocks 3/8-16 bulk per carton = 128 junction blocks |

As the world's #1 brand in circuit protection Littelfuse offers the broadest and deepest portfolio of circuit protection products and a global network of technical support, backed by more than 85 years of application design expertise. For all of your circuit protection needs visit our Technical Resources center at www.littelfuse.com/technical-resources

- **Application Notes**
- **Application Testing**
- **SPICE Models**
- **Local Technical Support**
- **Reference Designs**
- **Product Samples**
- **Technical Articles**
- **Certification Documents**
- **Data Sheets**



WWW.LITTELFUSE.COM

Littelfuse is the world leader in circuit protection. We offer an extensive selection of circuit protection technologies for Automotive applications. Littelfuse circuit protection expert staff can assist you in designing circuit protection for your most demanding applications. Solutions for over-current applications as well as over-voltage applications are available from Littelfuse.

Low Current Distribution (LCD) MICRO2, MICRO3, LP MINI, MINI, ATOF, MAXI, MCASE, LP JCASE, JCASE

High Current Distribution (HCD) MIDI, BF1, MEGA, CF

Advanced Power Systems High-voltage and customized fusing solutions

Battery Cable Protection (BCP) CABLE PRO and BF-Inline products for mounting directly inline as part of a high-power cable assembly

Fuse, Relay and Specialty Modules Modular system for constructing custom fuse and relay boxes for low volume applications

Power Distribution FLEC Customizable pre-tooled junction boxes

Accessories For assembly and mounting, shunts, fuse pullers, fuse holders terminals, terminal locks etc.

For more information, please contact your authorized Littelfuse product representative or visit our website at www.littelfuse.com

X-ON Electronics

Largest Supplier of Electrical and Electronic Components

Click to view similar products for [Circuit Breakers](#) category:

Click to view products by [Littelfuse](#) manufacturer:

Other Similar products are found below :

[LUGZX66-1-61-20.0-44](#) [M39019/01-201](#) [M39019/01-201S](#) [M39019/01-221](#) [M39019/01-323](#) [M39019/01-333](#) [M39019/01-336](#) [M39019/02-248](#) [M39019/02-311](#) [M39019/02-316](#) [M39019/04-249S](#) [M39019/05-246S](#) [M39019/06-254S](#) [M55629/1-016](#) [M55629/1-018](#) [M55629/1-021](#) [M55629/1-033](#) [M55629/1-036](#) [M55629/1-046](#) [M55629/1-048](#) [M55629/1-058](#) [M55629/1-067](#) [M55629/1-070](#) [M55629/1-079](#) [M55629/1-084](#) [M55629/1-085](#) [M55629/1-101](#) [M55629/1-109](#) [M55629/11-102](#) [M55629/1-120](#) [M55629/12-045](#) [M55629/12-046](#) [M55629/1-330](#) [M55629/1-366](#) [M55629/1-387](#) [M55629/1-401](#) [M55629/1-450](#) [M55629/2-022](#) [M55629/2-030](#) [M55629/2-072](#) [M55629/2-082](#) [M55629/2-099](#) [M55629/20-LL](#) [M55629/2-101](#) [M55629/2-102](#) [M55629/21-BM-BM](#) [M55629/21-HM-HM](#) [M55629/21-NS-NS](#) [M55629/22-NR-NR-NR](#) [M55629/22-RS-RS-RS](#)