

201A SERIES

3-Phase Voltage/Phase Monitor



Description

The 201A is a 3-phase, auto-ranging, dual-range voltage monitor that protects 190-480 V ac, 50/60 Hz motors regardless of size. The product provides a user selectable nominal voltage setpoint and the voltage monitor automatically selects between the 200 V and 400 V range. The 201A includes advanced single LED diagnostics, where color and light patterns distinguish between faults and normal conditions.

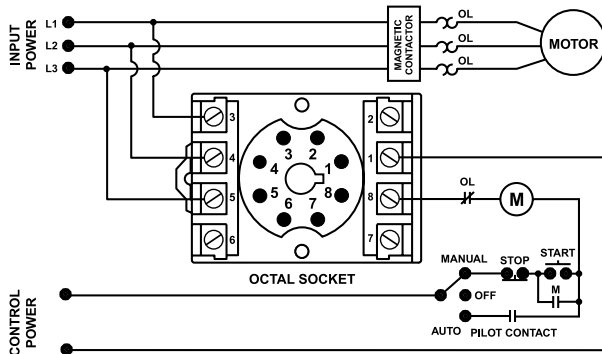
This unique microcontroller-based voltage and phase-sensing device constantly monitors the 3-phase voltages to detect harmful power line conditions. When a harmful condition is detected, the 201A's output relay is deactivated after a specified trip delay. The output relay reactivates after power line conditions return to acceptable levels for a specified restart delay time.

Features & Benefits

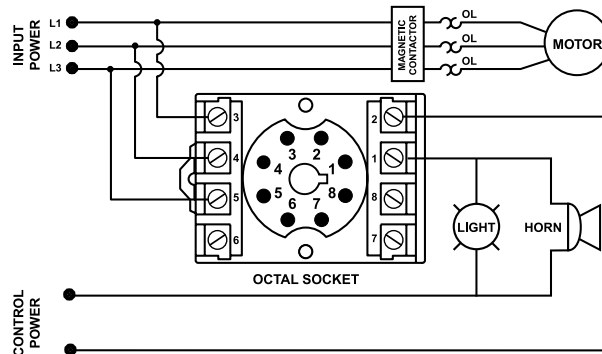
| FEATURES | BENEFITS |
|--|---|
| Proprietary microcontroller based circuitry | Constant monitoring of single-phase, low voltage, voltage unbalance, phase reversal, harmful power line conditions. High voltage monitoring optional. |
| Compact design for 8-pin; DIN rail or surface mount | Allows flexibility in panel installation |
| Auto-sensing wide voltage range | Automatically senses system voltage between 190 - 480 V ac. Saves setup time. |
| Advanced LED diagnostics | Quick visual indicator for cause of trip. LED indications include: normal operation, power-up restart delay, reverse-phase trip, unbalance/single-phase trip, high/low voltage trip |

Wiring Diagram

201A WITH MOTOR CONTROL



201A WITH ALARM CONTROL



Accessories



OT08PC Octal 8-pin Socket

8-pin 35 mm DIN rail or surface mount. Rated at 10 A @ 600 V ac. Surface mounted with two #6 screws or snaps onto a 35 mm DIN rail.

Ordering Information

| MODEL | LINE VOLTAGE | DESCRIPTION |
|--------|--------------|--|
| 201A | 190-480VAC | DIN rail or surface mountable |
| 201A-9 | 190-480VAC | Includes high voltage detection. DIN rail or surface mountable |

201A SERIES

Specifications

| | |
|--|---------------------------------------|
| Frequency | 50/60 Hz |
| Functional Characteristics | |
| Low Voltage (% of setpoint) | |
| Trip | 90 % ±1 % |
| Reset | 93 % ±1 % |
| Voltage Unbalance (NEMA) | |
| Trip | 6 % |
| Reset | 4.5 % |
| Optional High Voltage (% of setpoint) | |
| Trip | 110 % ±1 % |
| Reset | 107 % ±1 % |
| Trip Delay Time | |
| High/Low Voltage Fault Unbalance & Phasing Faults | 4 seconds |
| Restart Delay Time | 2 seconds |
| After a Fault | |
| After a Complete Power Loss | 2 seconds |
| Output Characteristics | |
| Output Contact Rating (SPDT) | |
| Pilot Duty | 480 VA @ 240 V ac |
| General Purpose | 10 A @ 240 V ac |
| General Characteristics | |
| Temperature Range | -20° to 70°C (-4° to 158°F) |
| Trip & Reset Accuracy | ±1% |
| Maximum Input Power | 5 W |
| Relative Humidity | 10–95%, non-condensing per IEC 68-2-3 |
| Terminal Torque | 12 in.-lbs. (for OT08-PC socket) |
| Wire Gauge | 12-22 AWG solid or stranded |
| Transient Protection (Internal) | 2500 V for 10 ms |

Standards Passed

| | |
|---|---|
| Electrostatic Discharge (ESD) | IEC 61000-4-2, Level 3, 6 kV contact, 8 kV air |
| Radio Frequency Immunity (RFI), Radiated | 150MHz, 10 V/m |
| Fast Transient Burst | IEC 61000-4-4, Level 3, 3.5 kV input power & controls |
| Surge Immunity IEC | IEC 61000-4-5, Level 3, 4 kV line-to-line; Level 4, 4 kV line-to-ground |
| ANSI/IEEE | C62.41 Surge and Ring Wave Compliance to a level of 6 kV line-to-line |
| Hi-potential Test | Meets UL508 (2 x rated V + 1000V for 1 min.) |
| Safety Marks | |
| UL (OT08PC octal socket required) | UL 508 (File #E68520) |
| Dimensions | H 44.45 mm (1.75"); W 60.33 mm (2.38"); D (with socket) 104.78 mm (4.13") |
| Weight | 0.7 lbs. (11.2 oz., 317.51 g) |
| Mounting Method | DIN rail or surface mount (plug in to OT08PC socket) |
| Socket Available | Model OT08PC (UL Rating 600 V) |

The 600 V socket can be surface mounted or installed on DIN Rail.

Note: Manufacturer's recommended screw terminal torque for the OT Series Octal Sockets is 12 in.-lbs.

Must use Model OT08PC socket for UL Rating!

X-ON Electronics

Largest Supplier of Electrical and Electronic Components

Click to view similar products for [Industrial Relays](#) category:

Click to view products by [Littelfuse](#) manufacturer:

Other Similar products are found below :

[6-1617801-8](#) [6-1618107-9](#) [7-1618273-3](#) [EV250-4A-02](#) [EV250-6A-01](#) [FCA-125-CX8](#) [FCA-325-159](#) [FCA-410-138](#) [8000-S3121](#) [8-1618273-6](#)
[8-1618393-1](#) [GCA63A220VAC60HZ](#) [GCA63A277VAC60HZ](#) [GCA63A600VAC60HZ](#) [1-1672275-3](#) [1-1833005-4](#) [H-16/S1](#) [A711Z](#)
[ACC530U20](#) [ACC633U30](#) [ACC730U30](#) [DH18DA](#) [1423675-8](#) [AVR907](#) [15732A200](#) [B07B032AC1-0329](#) [B329](#) [B490A](#) [1618279-1](#)
[BHR124Y](#) [1810DDB-SX](#) [N417](#) [P30C42A12D1-120](#) [2-1617748-6](#) [2-1618396-6](#) [2-1618398-1](#) [JMGACD-5M](#) [JMGSC-5LW](#) [JMGSCD-5L](#)
[PBO-18A1218](#) [PBO-40A3040](#) [K8DSPH1200480VAC](#) [KA-3C-12A](#) [RT334012WG](#) [S160156115](#) [SAH159](#) [2944795](#) [301-17SX](#) [1618105-2](#)
[1618112-6](#)