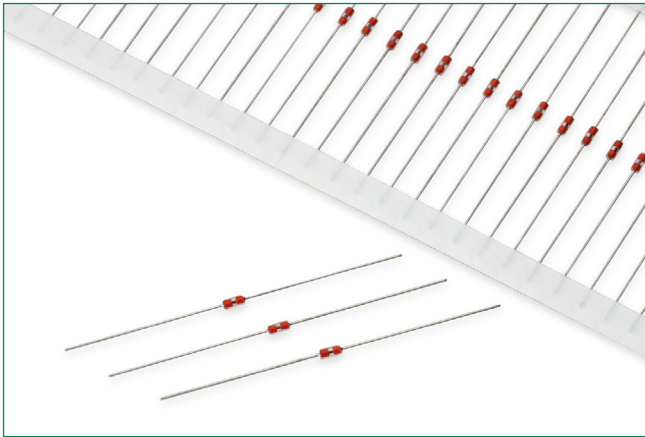


DO-35 Standard Series Glass Encapsulated Thermistors



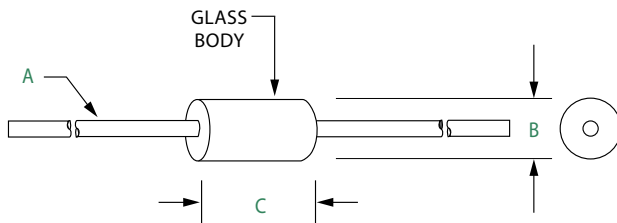
Description

Littelfuse low cost glass encapsulated thermistors are manufactured using super stable chips which are hermetically sealed in a glass (DO-35 diode style) package. The result is a device which exhibits excellent long term reliability and stability even when subjected to severe environmental or thermal conditions. Their uniform dimensions and axial lead configuration make them especially suitable for use with automatic insertion equipment.

Options

- Special Lead Forms
- Non-standard resistance values and tolerances
- Point matched at specified temperatures
- Tape and Reel Packaging

Dimensions



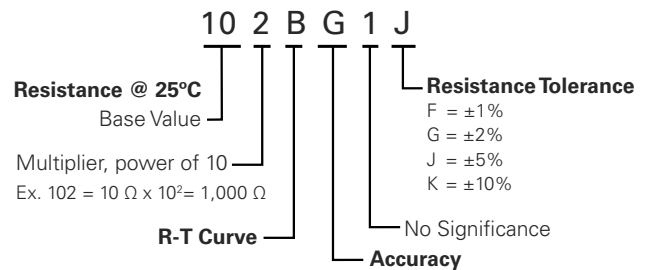
Dimensions shown in inches.

| A | B | C |
|--|---------------|---------------|
| 0.020" ±0.002" 24 AWG Tinned CCS 1.0" Long Min | 0.075" Max | 0.160" Max |

Features

- High temperature capability to +300°C
- Hermetically sealed glass package
- Low cost
- Excellent long-term stability
- High Voltage Insulation
- Tinned CSS Lead Wires are Solderable or Weldable

Part Numbering System



Note: Not all combinations of Part Number codes are available. Contact Littelfuse for details.

DO-35 Standard Series Glass Encapsulated Thermistors

Specifications

| Part Number | Resistance Ohms @25°C | *Resistance Tol. ± % @ 25°C | R-T Curve | Temperature Coefficient (%/°C) @ 25°C | Beta (K) 0-50°C | Beta (K) 25-85°C | Dissipation Constant, Nominal (mW/°C) | Thermal Time Constant, Max. - Still Air (seconds) | Thermal Time Constant, Max. - Well Stirred Oil (seconds) | Temperature Rating (°C) |
|-------------|-----------------------|-----------------------------|-----------|---------------------------------------|-----------------|------------------|---------------------------------------|---|--|-------------------------|
| 501BG1J | 500 | 5 | B | -3.31 | 2941 | — | 2 | 5 | 0.5 | -55 to +220 |
| 501BG1K | 500 | 10 | B | -3.31 | 2941 | — | 2 | 5 | 0.5 | -55 to +220 |
| 102BG1J | 1000 | 5 | B | -3.31 | 2941 | — | 2 | 5 | 0.5 | -55 to +220 |
| 102BG1K | 1000 | 10 | B | -3.31 | 2941 | — | 2 | 5 | 0.5 | -55 to +220 |
| 102EG1K | 1000 | 10 | E | -3.67 | 3263 | — | 2 | 5 | 0.5 | -55 to +220 |
| 102PS1G | 1000 | 2 | PTC | — | — | — | 2 | 8 | 1 | -55 to +150 |
| 102PS1J | 1000 | 5 | PTC | — | — | — | 2 | 8 | 1 | -55 to +150 |
| 162PS1J | 1600 | 5 | PTC | — | — | — | 2 | 8 | 1 | -55 to +300 |
| 182FG1K | 1800 | 10 | F | -3.86 | 3419 | — | 2 | 5 | 0.5 | -55 to +300 |
| 202FG1J | 2000 | 5 | F | -3.86 | 3419 | — | 2 | 5 | 0.5 | -55 to +300 |
| 202FG1K | 2000 | 10 | F | -3.86 | 3419 | — | 2 | 5 | 0.5 | -55 to +300 |
| 202PS1J | 2000 | 5 | PTC | — | — | — | 2 | 8 | 1 | -55 to +300 |
| 222E1G1K | 2186 | 10 | E1 | -3.82 | 3320 | — | 2 | 5 | 0.5 | -55 to +300 |
| 252BG1K | 2500 | 10 | B | -3.3 | 2941 | — | 2 | 5 | 0.5 | -55 to +220 |
| 252FG1J | 2500 | 5 | F | -3.86 | 3419 | — | 2 | 5 | 0.5 | -55 to +300 |
| 252FG1K | 2500 | 10 | F | -3.86 | 3419 | — | 2 | 5 | 0.5 | -55 to +300 |
| 282FG1K | 2800 | 10 | F | -3.86 | 3419 | — | 2 | 5 | 0.5 | -55 to +300 |
| 302FG1K | 3000 | 10 | F | -3.86 | 3419 | — | 2 | 5 | 0.5 | -55 to +300 |
| 302JG1K | 3000 | 10 | J | -4.4 | 3892 | — | 2 | 5 | 0.5 | -55 to +300 |
| 332FG1K | 3300 | 10 | F | -3.86 | 3419 | — | 2 | 5 | 0.5 | -55 to +300 |
| 402FG4K | 4000 | 10 | F13 | -3.88 | 3453 | 3540 | 2 | 5 | 0.5 | -55 to +300 |
| 502E1G1K | 5000 | 10 | E1 | -3.82 | 3320 | — | 2 | 5 | 0.5 | -55 to +300 |

* Resistance tolerances of ± 1%, 2%, and 5% are available upon request

Specifications

| Part Number | Resistance Ohms @25°C | *Resistance Tol. ± % @ 25°C | R-T Curve | Temperature Coefficient (%/°C) @ 25°C | Beta (K) 0-50°C | Beta (K) 25-85°C | Dissipation Constant, Nominal (mW/°C) | Thermal Time Constant, Max. - Still Air (seconds) | Thermal Time Constant, Max. - Well Stirred Oil (seconds) | Temperature Range (°C) |
|-------------|-----------------------|-----------------------------|-----------|---------------------------------------|-----------------|------------------|---------------------------------------|---|--|------------------------|
| 502FG1J | 5000 | 5 | F | -3.86 | 3419 | — | 2 | 5 | 0.5 | -55 to +300 |
| 502FG1K | 5000 | 10 | F | -3.86 | 3419 | — | 2 | 5 | 0.5 | -55 to +300 |
| 502JG1K | 5000 | 10 | J | -4.4 | 3892 | — | 2 | 5 | 0.5 | -55 to +300 |
| 682JG1K | 6800 | 10 | J | -4.4 | 3892 | — | 2 | 5 | 0.5 | -55 to +300 |
| 822JG1K | 8200 | 10 | J | -4.4 | 3892 | — | 2 | 5 | 0.5 | -55 to +300 |
| 103E1G1F | 10000 | 1 | E1 | — | 3320 | 3435 | 2 | 5 | 0.5 | -55 to +250 |
| 103E1G1K | 10000 | 10 | E1 | — | 3320 | — | 2 | 5 | 0.5 | -55 to +300 |
| 103FG1K | 10000 | 10 | F | -3.86 | 3419 | — | 2 | 5 | 0.5 | -55 to +300 |
| 103GG1K | 10000 | 10 | G | -4.04 | 3575 | — | 2 | 5 | 0.5 | -55 to +300 |
| 103JG1F | 10000 | 1 | J | -4.4 | 3892 | — | 2 | 5 | 0.5 | -55 to +300 |
| 103JG1G | 10000 | 2 | J | -4.4 | 3892 | — | 2 | 5 | 0.5 | -55 to +300 |
| 103JG1J | 10000 | 5 | J | -4.4 | 3892 | — | 2 | 5 | 0.5 | -55 to +300 |
| 103JG1K | 10000 | 10 | J | -4.4 | 3892 | — | 2 | 5 | 0.5 | -55 to +300 |
| 103JG1KE | 10000 | 10 | J | -4.4 | 3892 | — | 2 | 5 | 0.5 | -55 to +300 |
| 123GG1K | 12000 | 10 | G | -4.03 | 3575 | — | 2 | 5 | 0.5 | -55 to +300 |
| 123JG1K | 12000 | 10 | J | -4.4 | 3892 | — | 2 | 5 | 0.5 | -55 to +300 |
| 153JG1K | 15000 | 10 | J | -4.4 | 3892 | — | 2 | 5 | 0.5 | -55 to +300 |
| 203JG1F | 20000 | 1 | J | -4.4 | 3892 | — | 2 | 5 | 0.5 | -55 to +300 |
| 203JG1J | 20000 | 5 | J | -4.4 | 3892 | — | 2 | 5 | 0.5 | -55 to +300 |
| 203JG1K | 20000 | 10 | J | -4.4 | 3892 | — | 2 | 5 | 0.5 | -55 to +300 |
| 253JG1F | 25000 | 1 | J | — | 3892 | — | 2 | 5 | 0.5 | -55 to +300 |
| 253JG1K | 25000 | 10 | J | -4.4 | 3892 | — | 2 | 5 | 0.5 | -55 to +300 |

* Resistance tolerances of ± 1%, 2%, and 5% are available upon request

Leaded Thermistors

Glass Encapsulated Thermistor

Specifications

| Part Number | Resistance Ohms @25°C | *Resistance Tol. ± % @ 25°C | R-T Curve | Temperature Coefficient (%/°C) @ 25°C | Beta (K) 0-50°C | Beta (K) 25-85°C | Dissipation Constant, Nominal (mW/°C) | Thermal Time Constant, Max. - Still Air (seconds) | Thermal Time Constant, Max. - Well Stirred Oil (seconds) | Temperature Range (°C) |
|-------------|-----------------------|-----------------------------|-----------|---------------------------------------|-----------------|------------------|---------------------------------------|---|--|------------------------|
| 303HG1K | 30000 | 10 | H | -4.29 | 3810 | — | 2 | 5 | 0.5 | -55 to +300 |
| 303JG1F | 30000 | 1 | J | -4.4 | 3892 | — | 2 | 5 | 0.5 | -55 to +300 |
| 303JG1J | 30000 | 5 | J | -4.4 | 3892 | — | 2 | 5 | 0.5 | -55 to +300 |
| 303JG1K | 30000 | 10 | J | -4.4 | 3892 | — | 2 | 5 | 0.5 | -55 to +300 |
| 403GG1K | 40000 | 10 | G | -3.88 | 3575 | — | 2 | 5 | 0.5 | -55 to +300 |
| 503JG1F | 50000 | 1 | J | -4.4 | 3892 | — | 2 | 5 | 0.5 | -55 to +300 |
| 503JG1J | 50000 | 5 | J | -4.4 | 3892 | — | 2 | 5 | 0.5 | -55 to +300 |
| 503JG1K | 50000 | 10 | J | -4.4 | 3892 | — | 2 | 5 | 0.5 | -55 to +300 |
| 683N1G1K | 68000 | 10 | N1 | -4.5 | 3991 | — | 2 | 5 | 0.5 | -55 to +300 |
| 753JG1K | 75000 | 10 | J | -4.4 | 3892 | — | 2 | 5 | 0.5 | -55 to +300 |
| 104JG1F | 100000 | 1 | J | -4.4 | 3892 | — | 2 | 5 | 0.5 | -55 to +300 |
| 104JG1H | 100000 | 3 | J | -4.4 | 3892 | — | 2 | 5 | 0.5 | -55 to +300 |
| 104JG1J | 100000 | 5 | J | -4.4 | 3892 | — | 2 | 5 | 0.5 | -55 to +300 |
| 104JG1K | 100000 | 10 | J | -4.4 | 3892 | — | 2 | 5 | 0.5 | -55 to +300 |
| 104LG2K | 100000 | 10 | L1 | -4.52 | 3920 | 4040 | 2 | 5 | 0.5 | -55 to +300 |
| 104N1G1K | 100000 | 10 | N1 | -4.5 | 3991 | — | 2 | 5 | 0.5 | -55 to +300 |
| 104RG1J | 100000 | 5 | R | -4.68 | 4140 | — | 2 | 5 | 0.5 | -55 to +300 |
| 104RG1K | 100000 | 10 | R | -4.68 | 4140 | — | 2 | 5 | 0.5 | -55 to +300 |
| 124JG1K | 120000 | 10 | J | -4.4 | 3892 | — | 2 | 5 | 0.5 | -55 to +300 |
| 154JG1K | 150000 | 10 | J | -4.4 | 3892 | — | 2 | 5 | 0.5 | -55 to +300 |
| 204JG1K | 200000 | 10 | J | -4.4 | 3892 | — | 2 | 5 | 0.5 | -55 to +300 |
| 224JG1K | 220000 | 10 | J | -4.4 | 3892 | — | 2 | 5 | 0.5 | -55 to +300 |

* Resistance tolerances of ± 1%, 2%, and 5% are available upon request

Specifications

| Part Number | Resistance Ohms @25°C | *Resistance Tol. ± % @ 25°C | R-T Curve | Temperature Coefficient (%/°C) @ 25°C | Beta (K) 0-50°C | Beta (K) 25-85°C | Dissipation Constant, Nominal (mW/°C) | Thermal Time Constant, Max. - Still Air (seconds) | Thermal Time Constant, Max. - Well Stirred Oil (seconds) | Temperature Range (°C) |
|-------------|-----------------------|-----------------------------|-----------|---------------------------------------|-----------------|------------------|---------------------------------------|---|--|------------------------|
| 234RG1G | 230000 | 2 | R | -4.68 | 4140 | — | 2 | 5 | 0.5 | -55 to +300 |
| 254JG1J | 250000 | 5 | J | -4.4 | 3892 | 3435 | 2 | 5 | 0.5 | -55 to +300 |
| 254JG1K | 250000 | 10 | J | -4.4 | 3892 | — | 2 | 2 | 0.5 | -55 to +300 |
| 304JG1K | 300000 | 10 | J | -4.4 | 3892 | — | 2 | 5 | 0.5 | -55 to +300 |
| 334RG1K | 330000 | 10 | R | -4.68 | 4140 | 4263 | 2 | 5 | 0.5 | -55 to +300 |
| 504RG1J | 500000 | 5 | R | -4.68 | 4140 | — | 2 | 5 | 0.5 | -55 to +300 |
| 504RG1K | 500000 | 10 | R | -4.68 | 4140 | — | 2 | 5 | 0.5 | -55 to +300 |
| 105RG1J | 1000000 | 5 | R | -4.68 | 4140 | — | 2 | 5 | 0.5 | -55 to +300 |
| 105RG1K | 1000000 | 10 | R | -4.68 | 4140 | — | 2 | 5 | 0.5 | -55 to +300 |
| 105V3G1K | 1000000 | 10 | V3 | -4.68 | 4369 | — | 2 | 5 | 0.5 | -55 to +300 |
| 205RG1K | 2000000 | 10 | R | -4.68 | 4140 | — | 2 | 5 | 0.5 | -55 to +300 |
| 205V4G1K | 2000000 | 10 | V4 | -4.85 | 4288 | — | 2 | 5 | 0.5 | -55 to +300 |
| 375Y1G2K | 3700000 | 10 | Y1 | -5.33 | 4584 | 4800 | 2 | 5 | 0.5 | -55 to +300 |
| 505YG7K | 5000000 | 10 | Y | -5.22 | 4640 | — | 2 | 5 | 0.5 | -55 to +300 |

* Resistance tolerances of ± 1%, 2%, and 5% are available upon request

Packaging

| Packaging Option | Packaging Code | Standard Quantity | Standard |
|------------------|----------------|-------------------|----------|
| Tape and Reel | -TR | 5000 | EIA-296 |

Disclaimer Notice - Information furnished is believed to be accurate and reliable. However, users should independently evaluate the suitability of and test each product selected for their own applications. Littelfuse products are not designed for, and may not be used in, all applications. Read complete Disclaimer Notice at: www.littelfuse.com/disclaimer-electronics

X-ON Electronics

Largest Supplier of Electrical and Electronic Components

Click to view similar products for [NTC \(Negative Temperature Coefficient\) Thermistors](#) *category:*

Click to view products by [Littelfuse](#) *manufacturer:*

Other Similar products are found below :

[B57364S2509A002](#) [526-31AA19-104](#) [526-31AN12-202](#) [11028414-00](#) [112-104KBF-F01](#) [526-31AA79-102](#) [PTCLL05P131TBE](#) [144-101FAG-001](#) [521-53AW02-104](#) [1-1423022-3](#) [MF0916001M4BP0FPT0](#) [MF58-5.91KF3820-B1](#) [04M5002SFA4](#) [NCG18WF104F0SRB](#) [NXFT15WF104FEAB040](#) [NXFT15XV103FEAB030](#) [NXFT15XV103FEAB025](#) [NXFT15XV103FEAB040](#) [NXFT15XH103FEAB050](#) [NXFT15XH103FEAB040](#) [NCG18XH103F0SRB](#) [USUR1000-502G-06](#) [NXFT15XH103FEAB045](#) [B57864S0502F040](#) [NTCALUG01A103G611](#) [GA50K6A1IA](#) [GA10K3MR1I](#) [NXFT15XV103FEAB035](#) [NXFT15XV103FEAB021](#) [NXFT15XV103FEAB045](#) [GA50K6A1IB](#) [GA30K5A1A](#) [GA10K4A1IA](#) [A1004SS22P63](#) [11031964-00](#) [NXFT15XH103FEAB035](#) [NXFT15WF104FEAB021](#) [GA100K6A1IB](#) [11026149-00](#) [TCTR0805F10K0F4460T](#) [TCTR0805F10K0F3720T](#) [TCTR0603F100KF4460T](#) [TCTR0603F100KF4390T](#) [TCTR0603F100KF4050T](#) [TCTR0603F100KF3980T](#) [TCTR0603F10K0F4300T](#) [TCTR0603F10K0F3960T](#) [TCTR0603F10K0F3930T](#) [TCTR0805F100KF4460T](#) [TCTR0805F100KF4310T](#)