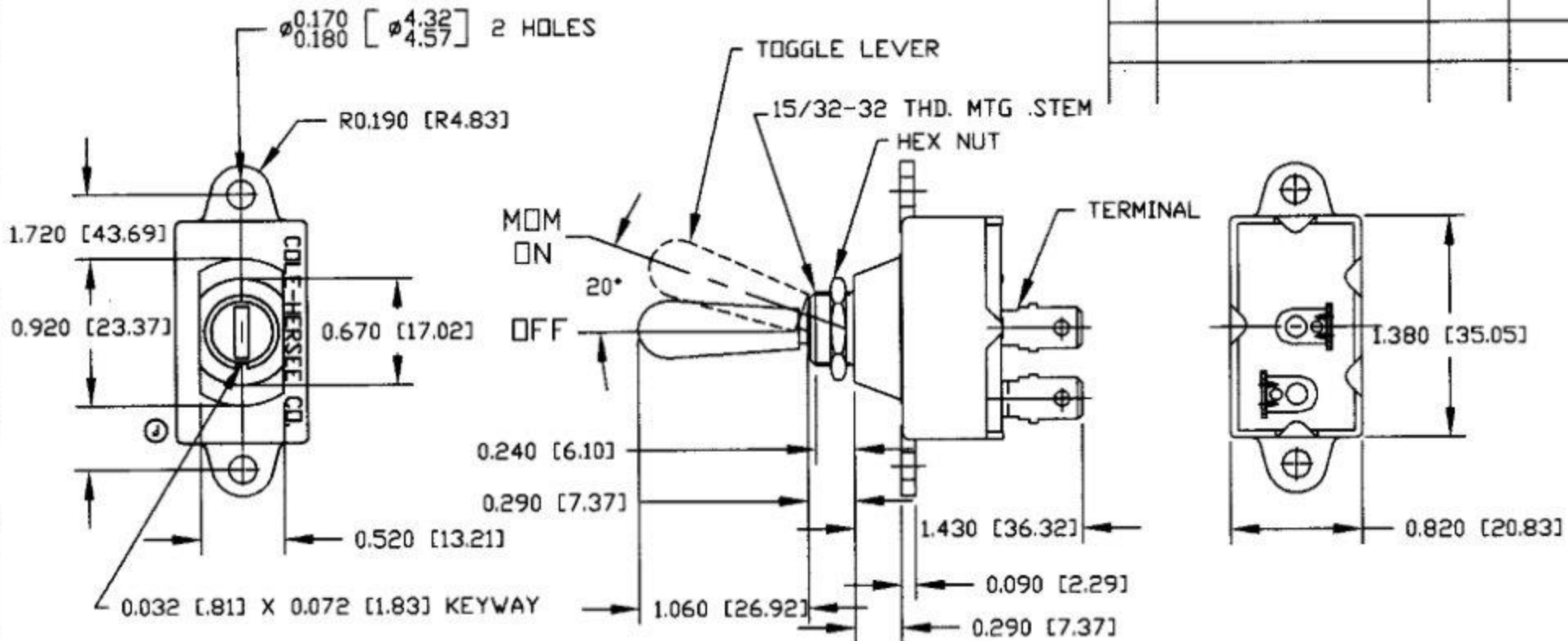


Revision Control Record

Rev.	Description of Change	ECN No.	Date
J	DELETE 'BOSTON U.S.A'	04449	11/10/04



- NOTES:
 1. HEX NUT TO BE BAGGED
 2. ALL DIMENSION REFERENCE

Tolerances. Unless otherwise specifically noted, the following are default tolerances:
 • 2-place Decimal Dimensions $\pm .02"$
 • 3-place Decimal Dimensions $\pm .005"$
 • Angular Dimensions ± 1.5 Deg.
 • Metric: Refer to equivalent English Dimension Tolerance
 >>> NOTE: All tolerances are Non-Cumulative. <<<

Dimensional Units. All dimensions are expressed in inches except those shown in brackets (mm) are expressed in millimeters

"REF." or an Asterisk (*) = Non-Tolerance Reference Dimension, shown for clarification purposes only.

PROPRIETARY INFORMATION. This Engineering Drawing, and the information contained herein, is proprietary to Cole Hersee Company and may not be disclosed, re-produced, or in any other way transferred or communicated to any other party without the express written consent of an authorized representative of Cole Hersee Company.

DESIGN CONTROL. It is the responsibility of the individual using/referencing this drawing to assure that the noted design revision level agrees with the revision level of the Controlled Document (Master Drawing). This is a NON-CONTROLLED DOCUMENT unless otherwise specifically noted.

DO NOT SCALE - Dimensional variation may occur during printing/ reproduction.

Key for Special Characteristics...

- Critical Characteristic, relating to Safety and/or Regulatory Compliance
- Significant Characteristic relating to Process Control (SPC)
- Control Dimension relating to Form - Fit - Function as defined by Cole Hersee Company and/or the Customer

(Note that the identification of any Characteristics as being "Special" does not alter the requirement that ALL specified dimensions & tolerances must be met.)

Cole Hersee Co.
 20 Old Colony Ave., South Boston, MA, 02127
 Phn 617-268-2100 Web www.colehersee.com

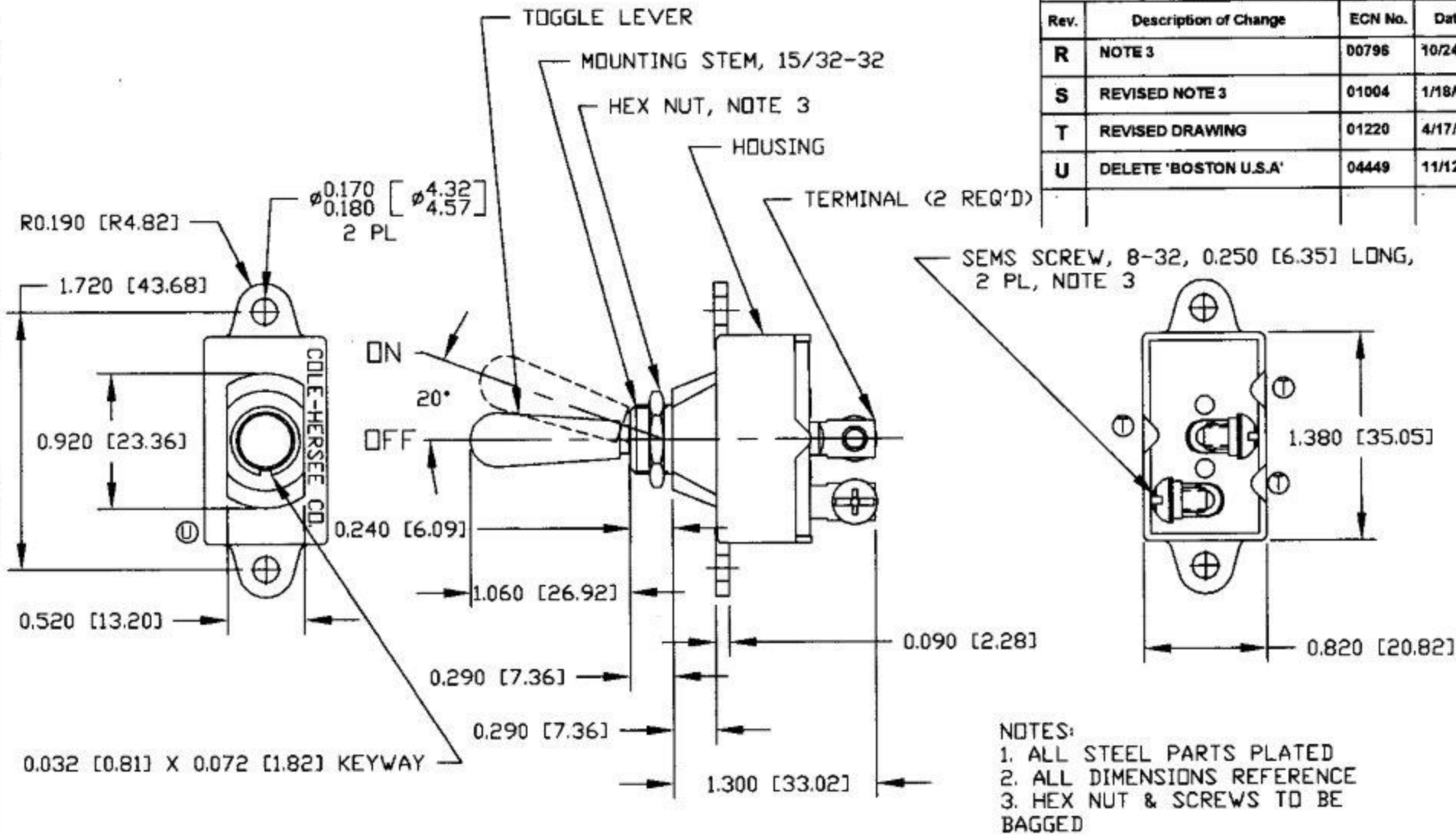
Description:
SW. TOGGLE S.P.ST. MOM

Drawing / Part No.: **551001**

Current Rev.: **J**

Revision Control Record

Rev.	Description of Change	ECN No.	Date
R	NOTE 3	00796	10/24/00
S	REVISED NOTE 3	01004	1/18/01
T	REVISED DRAWING	01220	4/17/01
U	DELETE 'BOSTON U.S.A'	04449	11/12/04



- NOTES:**
 1. ALL STEEL PARTS PLATED
 2. ALL DIMENSIONS REFERENCE
 3. HEX NUT & SCREWS TO BE BAGGED

Tolerances: Unless otherwise specifically noted, the following are default tolerances:
 • 2-place Decimal Dimensions $\pm .02$ "
 • 3-place Decimal Dimensions $\pm .005$ "
 • Angular Dimensions ± 1.5 Deg.
 • Metric: Refer to equivalent English Dimension Tolerance
 >>> NOTE: All tolerances are Non-Consultative. <<<

Dimensional Units: All dimensions are expressed in inches except those shown in brackets (xxx) are expressed in millimeters

REF. or an Asterisk () = Non-Toleranced Reference Dimension, shown for clarification purposes only.

PROPRIETARY INFORMATION: This Engineering Drawing, and the information contained herein, is proprietary to Cole Hersee Company and may not be disclosed, reproduced, or in any other way transmitted or disseminated to any other party without the express written consent of an authorized representative of Cole Hersee Company.

DESIGN CONTROL: It is the responsibility of the individual using / referencing this drawing to ensure that the noted design revision level agrees with the revision level of the Controlled Document (Master Drawing). This is a NON-CONTROLLED DOCUMENT unless otherwise specifically noted.

DO NOT SCALE: Dimensional variation may occur during printing / reproduction.

Key for Special Characteristics:

- Critical Characteristic, relating to Safety and/or Regulatory Compliance
- Significant Characteristic relating to Process Control (SPC)
- Control Dimension relating to Form - Fit - Function as defined by Cole Hersee Company and/or the Customer

(Note that the identification of any Characteristics as being "Special" does not alter the requirement that ALL specified dimensions & tolerances must be met.)

Cole Hersee Co.
 20 Old Colony Ave., South Boston, MA, 02127
 Ptn: 817-288-3100 Web: www.colehersee.com

Description:
SP-ST TOGGLE SWITCH

Used On or Ref.:

Scale: **1:1**

Drawn By: **SB**

Date Drawn: **1/21/63**

Responsible Engineer: **NA**

Pg. 1 of 1

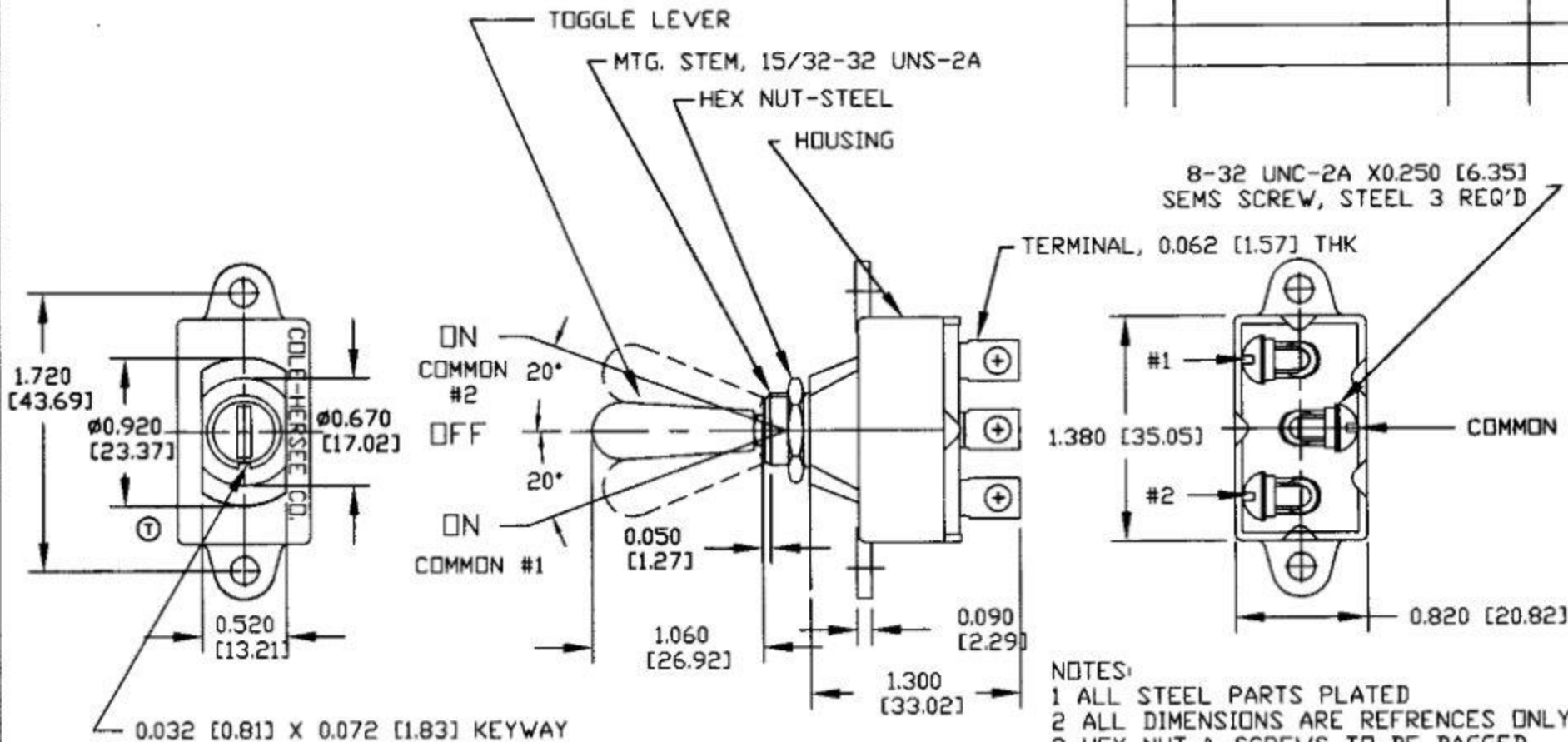
Drawing / Part No.:

551800

Current Rev. **U**

Revision Control Record

Rev.	Description of Change	ECN No.	Date
T	DELETE 'BOSTON U.S.A'	04449	11/05/04



- NOTES:
- 1 ALL STEEL PARTS PLATED
 - 2 ALL DIMENSIONS ARE REFERENCES ONLY
 - 3 HEX NUT & SCREWS TO BE BAGGED
 4. 12V DC - 20AMP LAMP LOAD
25AMP INDUCTIVE LOAD

Tolerances. Unless otherwise specifically noted, the following are default tolerances:
 * 3-place Decimal Dimensions $\pm .02^\circ$
 * 3-place Decimal Dimensions $\pm .005^\circ$
 * Angular Dimensions ± 1.8 Deg.
 * Metric: Refer to equivalent English Dimension Tolerances
 >>> NOTE: All tolerances are Non-Conservative. <<<

Dimensional Units. All dimensions are expressed in inches except those shown in brackets (xxx) are expressed in millimeters

"REF." or an Asterisk (*) = Non-Toleranced Reference Dimension, shown for clarification purposes only.

PROPRIETARY INFORMATION. This Engineering Drawing, and the information contained herein, is proprietary to Cole Hersee Company and may not be disclosed, re-produced, or in any other way transferred or communicated to any other party without the express written consent of an authorized representative of Cole Hersee Company.

DESIGN CORRECT. It is the responsibility of the individual using/ referencing this drawing to ensure that the noted design revision level agrees with the revision level of the Controlled Document (Master Drawing). This is a NON-CONTROLLED DOCUMENT unless otherwise specifically noted.

DO NOT SCALE - Dimensional variation may occur during printing/ reproduction.

Key for Special Characteristics:

- Critical Characteristic, relating to Safety and/or Regulatory Compliance
- Significant Characteristic relating to Process Control (SPC)
- Control Dimension relating to Form - Fit - Function as defined by Cole Hersee Company and/or the Customer

(Note that the identification of any Characteristics as being "Special" does not alter the requirement that ALL specified dimensions & tolerances must be met.)



Cole Hersee Co.

20 Old Colony Ave., South Boston, MA, 02127
 Phone: 817-268-2100 Web: www.colehersee.com

Description:

SW, SPDT, TOGGLE

Drawing/
Part No.:

551802

Current Rev.

T

Used On
or Ref.:

Scale: **1:1**

Drawn By: **SB**

Date Drawn: **1-3-86**

Responsible Engineer: **NA**

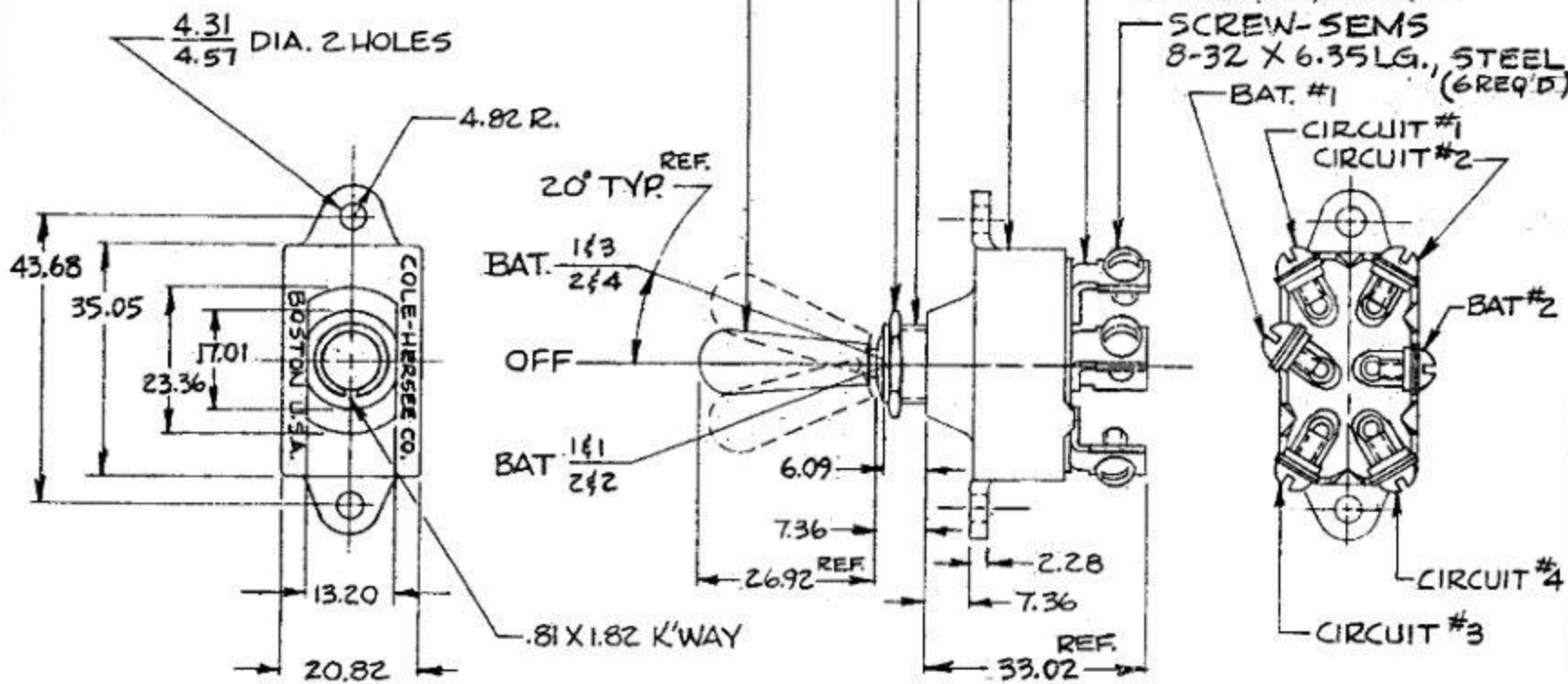
Pg. 1 of 1

1.81 .032
 2.82 .072
 3.28 .090
 4.31 .170
 4.57 .180
 4.82 .190
 5.09 .240
 7.36 .290
 13.20 .520
 17.01 .670
 20.82 .820
 25.34 .990
 24.42 1.060
 35.05 1.380
 43.68 1.720
 6.35 .250
 33.02 1.300

COLE-HERSEE CO.

Confidential property of Cole Hersee

551806



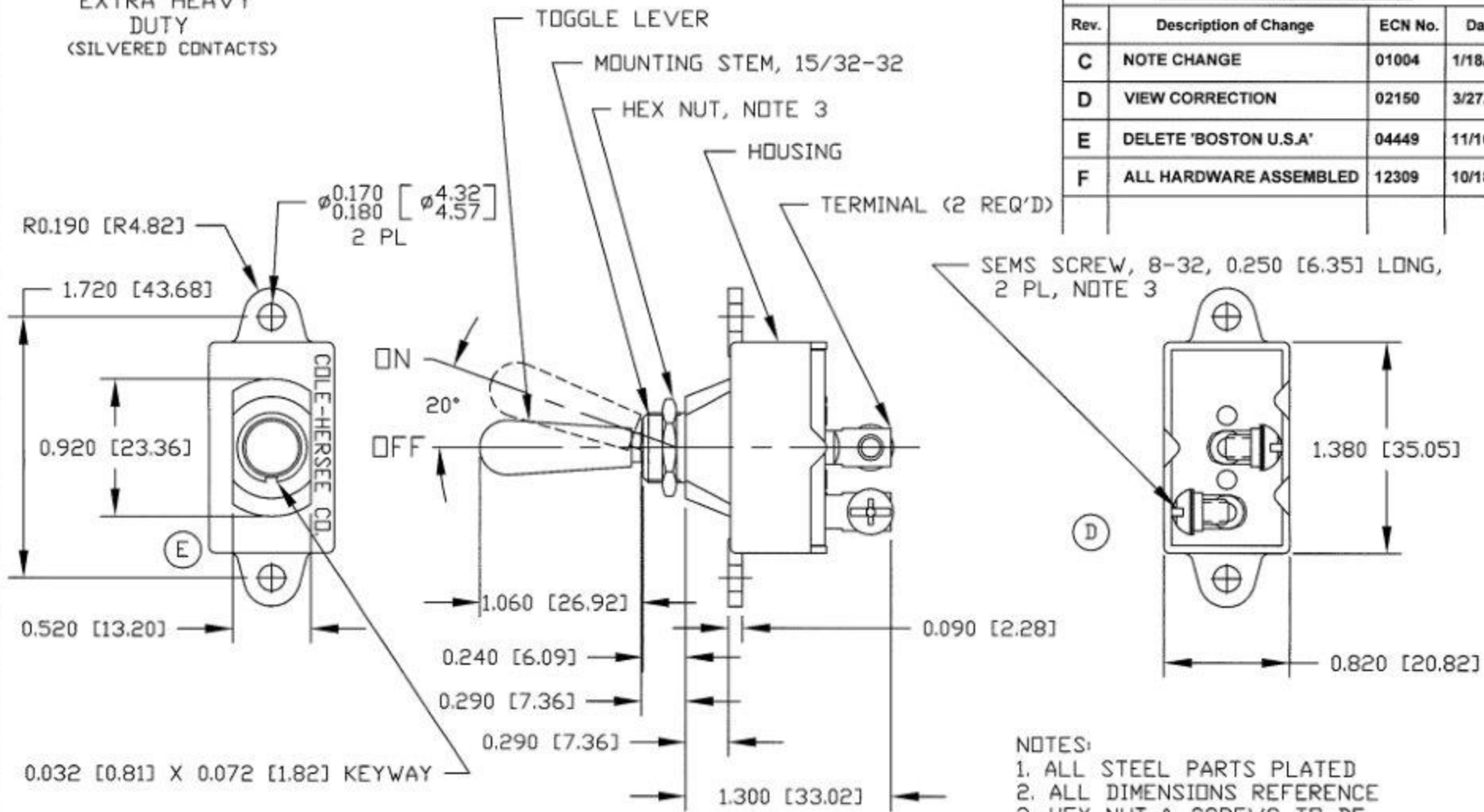
METRIC

NOTE:
 (M) ALL STEEL PARTS PLATED
 2. HEX NUT & SCREWS TO BE
 (N) BAGGED

DO NOT SCALE

LET	WAS	DATE	BY	LET	WAS	DATE	BY	MATERIAL	DRAWN	CHECKED	APPROV'D	SCALE	DATE DRAWN
								—	MF	CLB		1:1	2-25-64
								FINISH	COLE-HERSEE COMPANY BOSTON, MASS. 02127, U.S.A.				DATE BLUEPRINT
							—	TOLERANCES					D.P.D.T. TOGGLE SW.
				N	ECH 01005	1/4/01	PS	FRACTIONAL ±					
				M	CAD OR ZINC/25234	11/19/92	SH	DECIMAL ±.25					
				L	REDRAWN	10.1.76	KG						

EXTRA HEAVY
DUTY
(SILVERED CONTACTS)



Revision Control Record

Rev.	Description of Change	ECN No.	Date
C	NOTE CHANGE	01004	1/18/01
D	VIEW CORRECTION	02150	3/27/02
E	DELETE 'BOSTON U.S.A'	04449	11/10/04
F	ALL HARDWARE ASSEMBLED	12309	10/18/12

- NOTES:
 1. ALL STEEL PARTS PLATED
 2. ALL DIMENSIONS REFERENCE
 3. HEX NUT & SCREWS TO BE ASSEMBLED

Tolerances Unless otherwise specifically noted, the following are default tolerances:
 * 2-place Decimal Dimensions +/- .02"
 * 3-place Decimal Dimensions +/- .005"
 * Angular Dimensions +/- 1.5 Deg.
 * Metric: Refer to equivalent English Dimension Tolerance
 >>> NOTE: All tolerances are Non-Cumulative. <<<

Dimensional Units All dimensions are expressed in inches except those shown in brackets (xxx) are expressed in millimeters

"REF." or an Asterisk (*) = Non-Toleranced Reference Dimension, shown for clarification purposes only.

PROPRIETARY INFORMATION This Engineering Drawing, and the information contained herein, is proprietary to Cole Hersee Company and may not be disclosed, re-produced, or in any other way transferred or communicated to any other party without the express written consent of an authorized representative of Cole Hersee Company.

DESIGN CONTROL It is the responsibility of the individual using / referencing this drawing to assure that the noted design revision level agrees with the revision level of the Controlled Document (Master Drawing). This is a NON-CONTROLLED DOCUMENT unless otherwise specifically noted.

DO NOT SCALE - Dimensional variation may occur during printing / reproduction.

- Key for Special Characteristics:**
- CC Critical Characteristic, relating to Safety and/or Regulatory Compliance
 - X Significant Characteristic relating to Process Control (SPC)
 - CD Control Dimension relating to Form - Fit - Function as defined by Cole Hersee Company and/or the Customer

(Note that the identification of any Characteristics as being "Special" does not alter the requirement that ALL specified dimensions & tolerances must be met.)

Cole Hersee Co.
 20 Old Colony Ave., South Boston, MA, 02127
 Phn: 617-268-2100 Web: www.colehersee.com

Description: SP-ST TOGGLE SWITCH

Used On or Ref.:

Scale: **1:1**

Drawn By: **PEM**

Date Drawn: **9/18/00**

Responsible Engineer: **DPS**

Pg. 1 of 1

Drawing / Part No.:

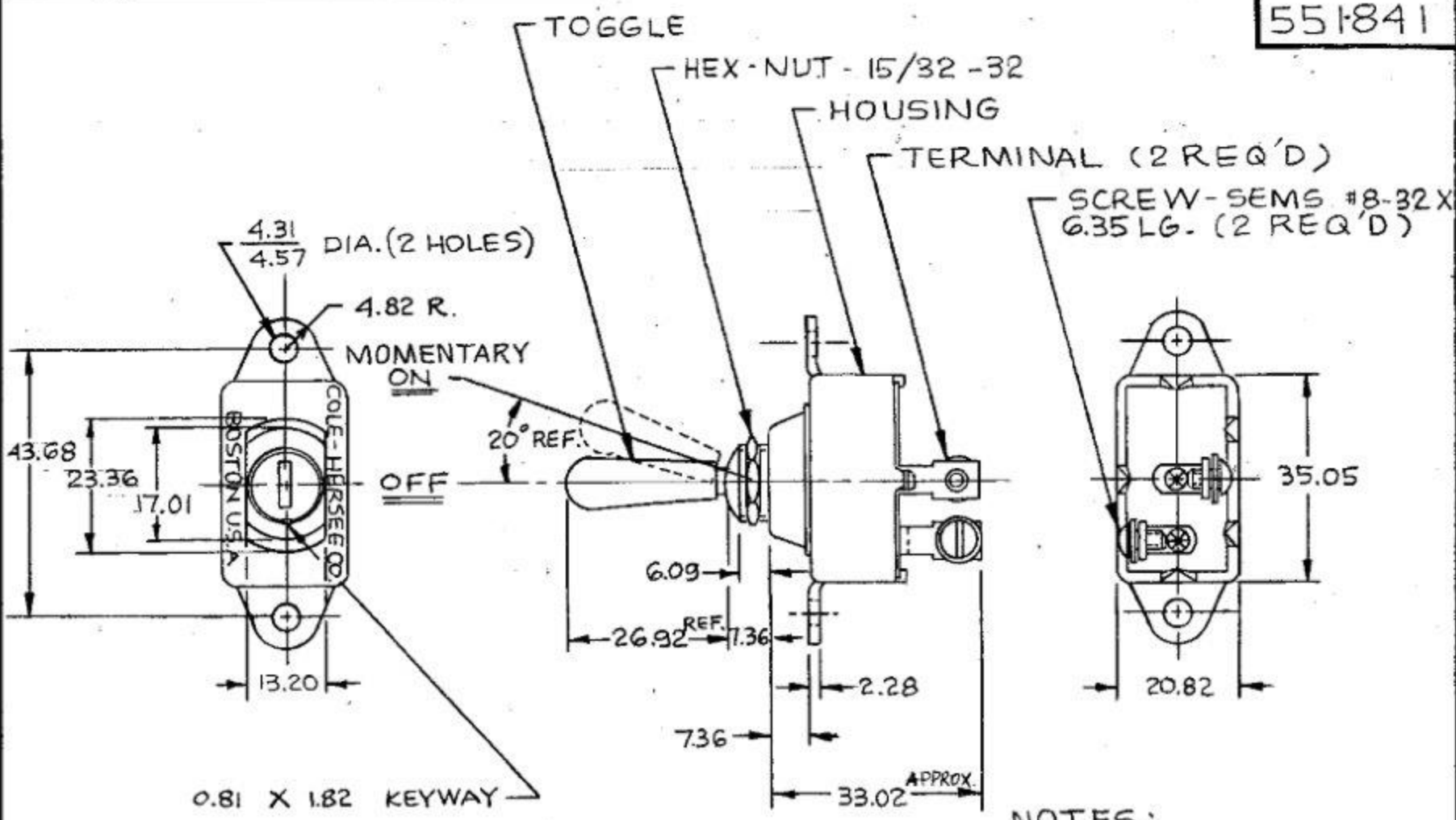
551840

Current Rev.:

F

551841

M IN
 .25 .010
 .31 .032
 .32 .072
 .28 .090
 .31 .170
 .57 .180
 .82 .190
 .89 .240
 .35 .250
 .36 .290
 .20 .520
 .82 .820
 .36 .920
 .92 1.060
 .02 1.300
 .05 1.380
 .68 1.720
 .01 .670



Confidential property of Cole Hersee

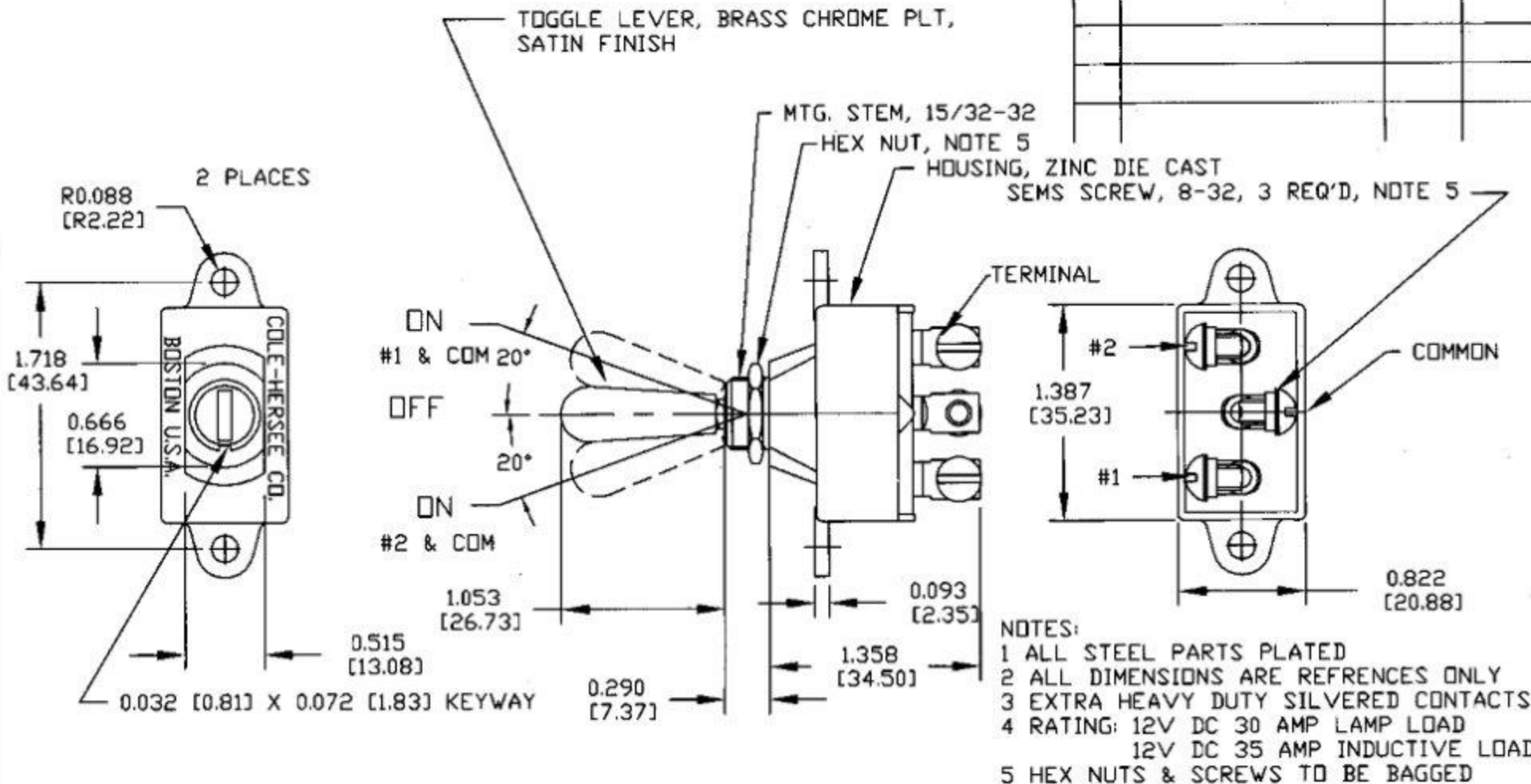
METRIC

- NOTES:
 1. ALL STEEL PARTS PLATED
 2. EXTRA HEAVY DUTY (SILVERED CONTACTS)
 3. HEX NUT & SCREWS TO BE BAGGED
- DO NOT SCALE

LET.	WAS	DATE	BY	LET.	WAS	DATE	BY	MATERIAL	DRAWN	CHECKED	APPR'D	SCALE	DATE DRAWN
								#	RZ	AF		1:1	5-6-65
								FINISH	Cole Hersee Co. BOSTON, MASSACHUSETTS U.S.A. 02111				DATE BLUEPRINT
				H	ECW 01005	1/14/01	DB	TOLERANCES	S.P.-S.T. MOM. TOGGLE SW				551841
			G	REDRAWN	9/13/90	B.L.	DECIMAL ±						
								METRIC ±.25					

Revision Control Record

Rev.	Description of Change	ECN No.	Date
M	NOTE CHANGE	01004	1/17/01



Tolerances - Unless otherwise specifically noted, the following are default tolerances:
 • 2-place Decimal Dimensions $\pm .02^\circ$
 • 3-place Decimal Dimensions $\pm .005^\circ$
 • Angular Dimensions ± 1.5 Deg.
 • Metric: Refer to equivalent English Dimension Tolerance
 >>> NOTE: All tolerances are Non-Cumulative. <<<

Dimensional Units - All dimensions are expressed in inches except those shown in brackets (xxx) are expressed in millimeters

"REF." or an Asterisk () = Non-Toleranced Reference Dimension, shown for clarification purposes only.

PROPRIETARY INFORMATION - This Engineering Drawing, and the information contained herein, is proprietary to Cole Hersee Company and may not be disclosed, re-produced, or in any other way transferred or communicated to any other party without the express written consent of its authorized representatives of Cole Hersee Company.

DESIGN CONTROL - It is the responsibility of the individual using / referring this drawing to assure that the noted design revision level agrees with the revision level of the Controlled Document (Master Drawing). This is a NON-CONTROLLED DOCUMENT unless otherwise specifically noted.

DO NOT SCALE - Dimensional variation may occur during printing / reproduction.

Key for Special Characteristics:

- Critical Characteristic, relating to Safety and/or Regulatory Compliance
- Significant Characteristic relating to Process Control (SPC)
- Control Dimension relating to Form - Fit - Function as defined by Cole Hersee Company and/or the Customer

(Note that the identification of any Characteristics as being "Special" does not alter the requirement that ALL specified dimensions & tolerances must be met.)



Cole Hersee Co.

20 Old Colony Ave., South Boston, MA, 02127
 Pbx: 617-268-2100 Web: www.colehersee.com

Description: SW, TGL, SPDT

Drawing/
Part No.:

551842

Current Rev.

M

Used On
or Ref.:

Scale: **1:1**

Drawn By: **RZ**

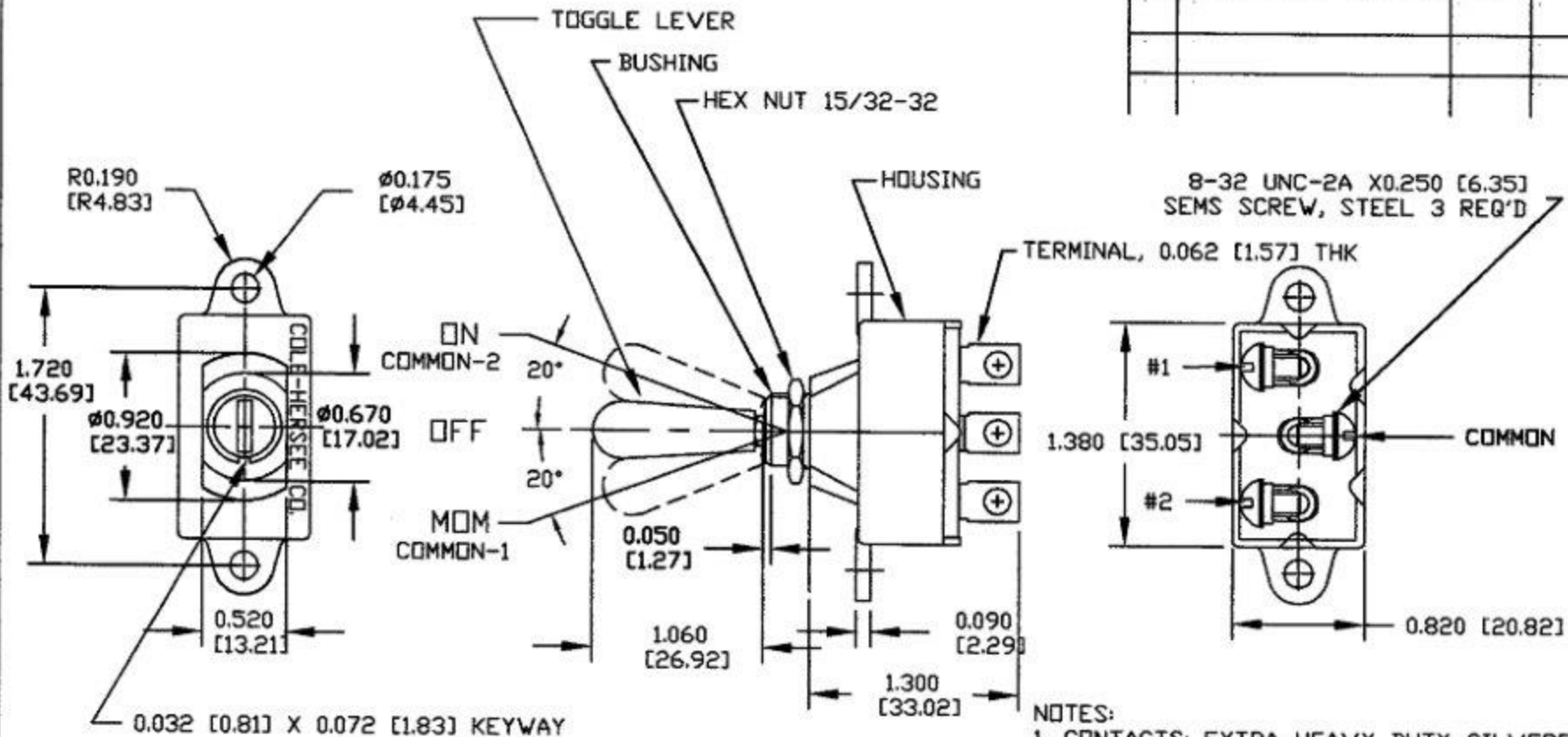
Date Drawn: **6/6/85**

Responsible Engineer: **NA**

Pg. 1 of 1

Revision Control Record

Rev.	Description of Change	ECN No.	Date
H	ADD NOTE 3 & 4	04449	07/21/06



- NOTES:
- CONTACTS: EXTRA HEAVY DUTY SILVERED
 - ALL STEEL PARTS PLATED
 - ALL DIMENSIONS ARE REFERENCES ONLY
 - HEX NUT & SCREWS TO BE BAGGED

Tolerances. Unless otherwise specifically noted, the following are default tolerances:
 * 2-place Decimal Dimensions $\pm .02$ "
 * 3-place Decimal Dimensions $\pm .005$ "
 * Angular Dimensions ± 1.0 Deg.
 * Metric: Refer to equivalent English Dimension Tolerance
 *** NOTE: All tolerances are Non-Cumulative. ***

Dimensional Units. All dimensions are expressed in inches except those shown in brackets (mm) are expressed in millimeters

"REF." or an Asterisk (*). = Non-Toleranced Reference Dimension, shown for clarification purposes only.

PROPRIETARY INFORMATION. This Engineering Drawing, and the information contained herein, is proprietary to Cole Hersee Company and may not be disclosed, re-produced, or in any other way transferred or communicated to any other party without the express written consent of an authorized representative of Cole Hersee Company.

DESIGN CONTROL. It is the responsibility of the individual using / referencing this drawing to ensure that the noted design revision level agrees with the revision level of the Controlled Document (Master Drawing). This is a NON-CONTROLLED DOCUMENT unless otherwise specifically noted.

DO NOT SCALE. - Dimensional variation may occur during printing / reproduction.

Key for Special Characteristics:

- Critical Characteristic, relating to Safety and/or Regulatory Compliance
- Significant Characteristic relating to Process Control (SPC)
- Control Dimension relating to Form - Fit - Function as defined by Cole Hersee Company and/or the Customer

State that the identification of any Characteristics as being "Special" does not alter the requirement that ALL specified dimensions & tolerances must be met.

Cole Hersee Co.
 20 Old Colony Ave., South Boston, MA, 02127
 Phn: 617-265-2100 Web: www.colehersee.com

Description:
SW, SPDT, MOM, TOGGLE

Used On or Ref.:

Scale: **1:1**

Drawn By: **RZ**

Date Drawn: **5-6-65**

Responsible Engineer: **NA**

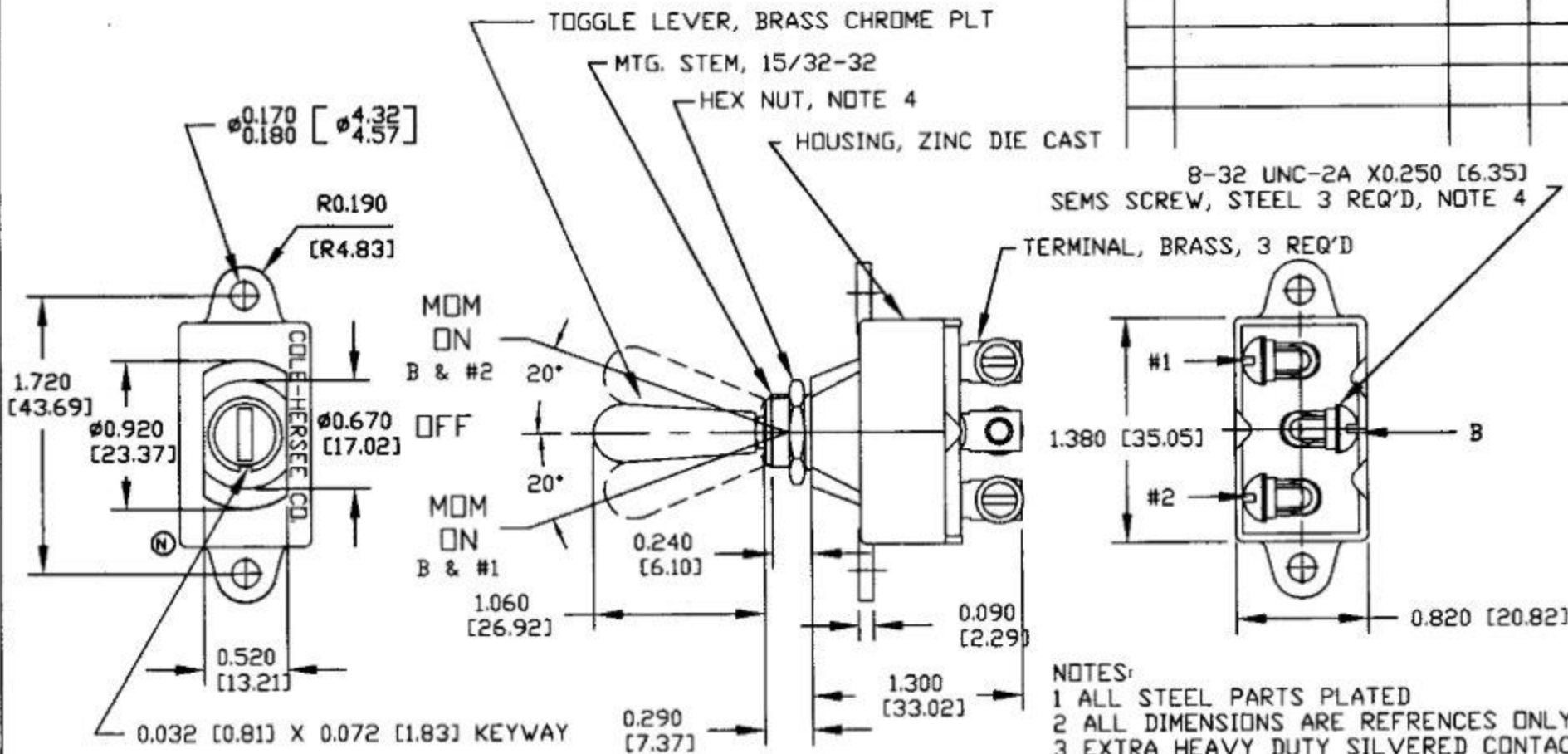
Pg. 1 of 1

Drawing / Part No.: **551843**

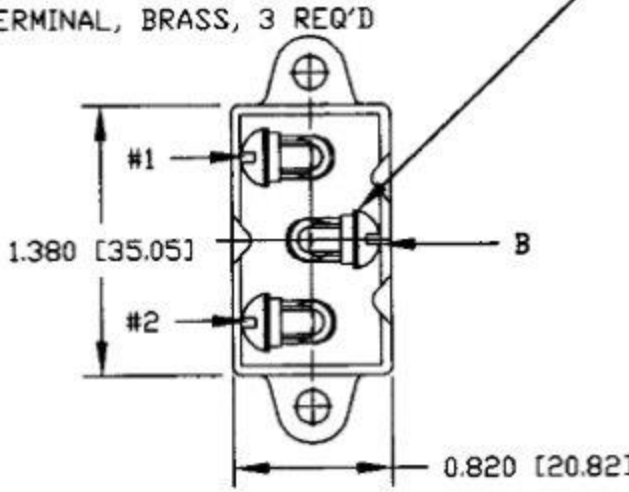
Current Rev.: **H**

Revision Control Record

Rev.	Description of Change	ECN No.	Date
N	DELETE 'BOSTON U.S.A.'	04449	11/05/04



8-32 UNC-2A X0.250 [6.35]
SEMS SCREW, STEEL 3 REQ'D, NOTE 4



- NOTES:
- 1 ALL STEEL PARTS PLATED
 - 2 ALL DIMENSIONS ARE REFERENCES ONLY
 - 3 EXTRA HEAVY DUTY SILVERED CONTACTS
 - 4 HEX NUTS & (3) SCREWS TO BE BAGGED
 5. 12V DC-- 30AMP LAMP LOAD
35AMP INDUCTIVE LOAD

Tolerances - Unless otherwise specifically noted, the following are default tolerances:
 • 2-place Decimal Dimensions $\pm .02"$
 • 3-place Decimal Dimensions $\pm .005"$
 • Angular Dimensions ± 1.0 Deg
 • Metric - Refer to equivalent English Dimension Tolerance
 >>> NOTE: All tolerances are Non-Conservative, etc

Dimensional Units - All dimensions are expressed in inches except those shown in brackets (xx) are expressed in millimeters

"REF." or an Asterisk (*) - Non-Toleranced Reference Dimension, shown for clarification purposes only.

PROPRIETARY INFORMATION - This Engineering Drawing, and the information contained herein, is proprietary to Cole Hersee Company and may not be disclosed, reproduced, or in any other way transferred or communicated to any other party without the express written consent of an authorized representative of Cole Hersee Company.

DESIGN CONTROL - It is the responsibility of the individual using/referencing this drawing to ensure that the noted design revision level agrees with the revision level of the Controlled Document (Master Drawing). This is a NON-CONTROLLED DOCUMENT unless otherwise specifically noted.

DO NOT SCALE - Dimensional variation may occur during printing/reproduction.

Key for Special Characteristics:

- CC Critical Characteristic, relating to Safety and/or Regulatory Compliance
- X Significant Characteristic relating to Process Control (SPC)
- FD Control Dimension relating to Form - FN - Function as defined by Cole Hersee Company and/or the Customer

(Note that the identification of any Characteristics as being "Special" does not alter the requirement that ALL specified dimensions & tolerances must be met.)

Cole Hersee Co.
 20 Old Colony Ave., South Boston, MA, 02127
 Ptn: 617-268-2100 Web: www.colehersee.com

Description:
 SW, SPDT, MOM, TOGGLE, SW

Used On or Ref.: Scale: **1:1**

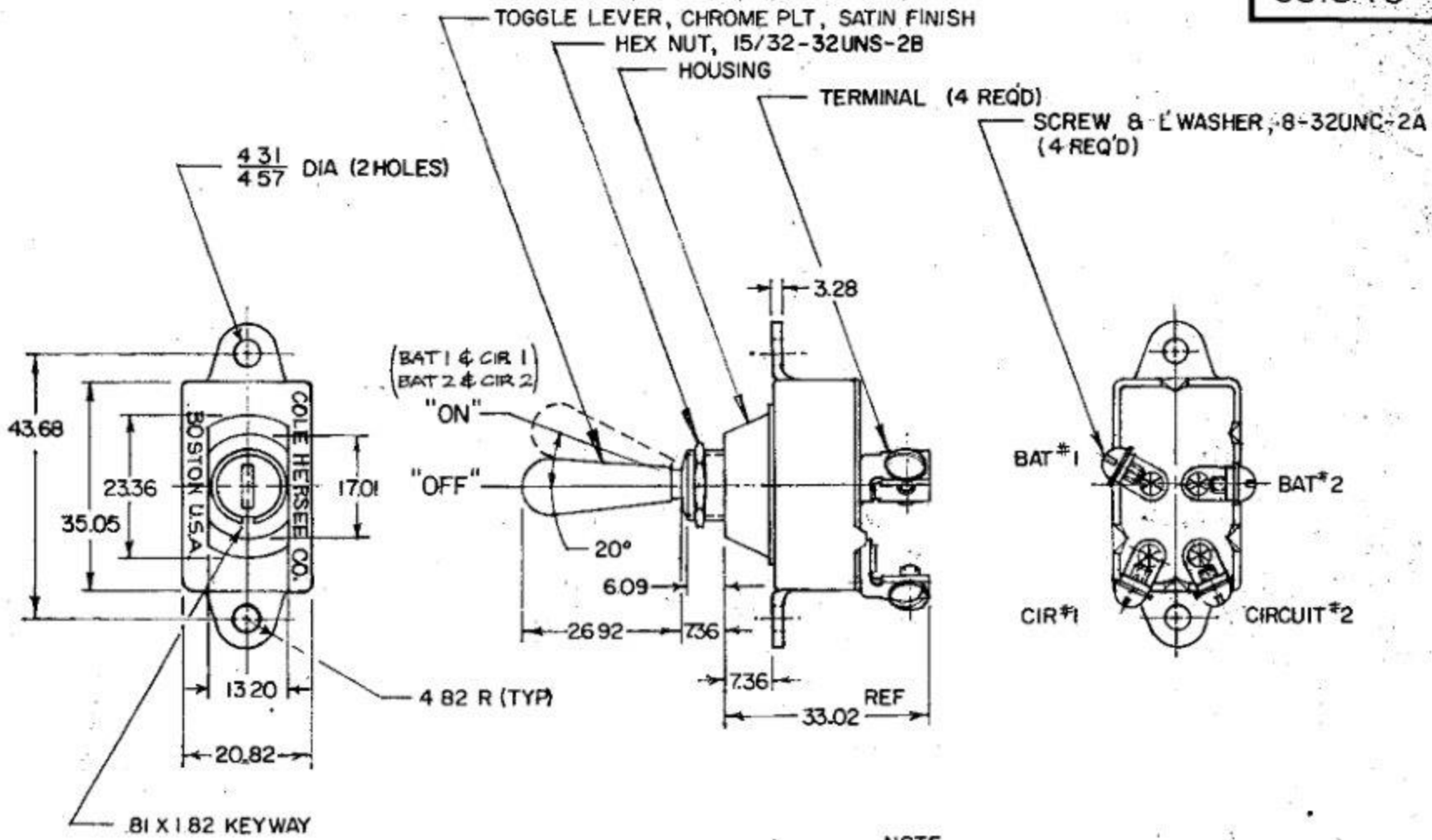
Drawn By: **RZ** Date Drawn: **5/6/65**

Responsible Engineer: **NA** Pg. 1 of 1

Drawing/Part No.: **551844** **Current Rev.:** **N**

551845

MM	IN
.25	.010
.31	.012
.38	.015
.43	.017
.51	.020
.62	.025
.76	.030
.91	.036
1.10	.043
1.33	.052
1.60	.063
1.91	.076
2.26	.090
2.65	.106
3.08	.123
3.55	.141
4.06	.160
4.61	.181
5.20	.205
5.83	.231
6.50	.259
7.21	.287
7.96	.316
8.75	.346
9.58	.377
10.45	.409
11.36	.441
12.31	.474
13.30	.508
14.33	.542
15.40	.576
16.51	.611
17.66	.646
18.85	.681
20.08	.716
21.35	.751
22.66	.786
24.01	.821
25.40	.856
26.83	.891
28.30	.926
29.81	.961
31.36	.996
32.95	1.031
34.58	1.066
36.25	1.101
37.96	1.136
39.71	1.171
41.50	1.206
43.33	1.241
45.20	1.276
47.11	1.311
49.06	1.346
51.05	1.381
53.08	1.416
55.15	1.451
57.26	1.486
59.41	1.521
61.60	1.556
63.83	1.591
66.10	1.626
68.41	1.661
70.76	1.696
73.15	1.731
75.58	1.766
78.05	1.801
80.56	1.836
83.11	1.871
85.70	1.906
88.33	1.941
91.00	1.976
93.71	2.011
96.46	2.046
99.25	2.081
102.08	2.116
104.95	2.151
107.86	2.186
110.81	2.221
113.80	2.256
116.83	2.291
119.90	2.326
123.01	2.361
126.16	2.396
129.35	2.431
132.58	2.466
135.85	2.501
139.16	2.536
142.51	2.571
145.90	2.606
149.33	2.641
152.80	2.676
156.31	2.711
159.86	2.746
163.45	2.781
167.08	2.816
170.75	2.851
174.46	2.886
178.21	2.921
182.00	2.956
185.83	2.991
189.70	3.026
193.61	3.061
197.56	3.096
201.55	3.131
205.58	3.166
209.65	3.201
213.76	3.236
217.91	3.271
222.10	3.306
226.33	3.341
230.60	3.376
234.91	3.411
239.26	3.446
243.65	3.481
248.08	3.516
252.55	3.551
257.06	3.586
261.61	3.621
266.20	3.656
270.83	3.691
275.50	3.726
280.21	3.761
284.96	3.796
289.75	3.831
294.58	3.866
299.45	3.901
304.36	3.936
309.31	3.971
314.30	4.006
319.33	4.041
324.40	4.076
329.51	4.111
334.66	4.146
339.85	4.181
345.08	4.216
350.35	4.251
355.66	4.286
361.01	4.321
366.40	4.356
371.83	4.391
377.30	4.426
382.81	4.461
388.36	4.496
393.95	4.531
399.58	4.566
405.25	4.601
410.96	4.636
416.71	4.671
422.50	4.706
428.33	4.741
434.20	4.776
440.11	4.811
446.06	4.846
452.05	4.881
458.08	4.916
464.15	4.951
470.26	4.986
476.41	5.021
482.60	5.056
488.83	5.091
495.10	5.126
501.41	5.161
507.76	5.196
514.15	5.231
520.58	5.266
527.05	5.301
533.56	5.336
540.11	5.371
546.70	5.406
553.33	5.441
560.00	5.476
566.71	5.511
573.46	5.546
580.25	5.581
587.08	5.616
593.95	5.651
600.86	5.686
607.81	5.721
614.80	5.756
621.83	5.791
628.90	5.826
636.01	5.861
643.16	5.896
650.35	5.931
657.58	5.966
664.85	6.001
672.16	6.036
679.51	6.071
686.90	6.106
694.33	6.141
701.80	6.176
709.31	6.211
716.86	6.246
724.45	6.281
732.08	6.316
739.75	6.351
747.46	6.386
755.21	6.421
763.00	6.456
770.83	6.491
778.70	6.526
786.61	6.561
794.56	6.596
802.55	6.631
810.58	6.666
818.65	6.701
826.76	6.736
834.91	6.771
843.10	6.806
851.33	6.841
859.60	6.876
867.91	6.911
876.26	6.946
884.65	6.981
893.08	7.016
901.55	7.051
910.06	7.086
918.61	7.121
927.20	7.156
935.83	7.191
944.50	7.226
953.21	7.261
961.96	7.296
970.75	7.331
979.58	7.366
988.45	7.401
997.36	7.436



Confidential property of Cole Hersee

- NOTE
 1 SILVERED CONTACTS
 2 EXTRA HEAVY DUTY

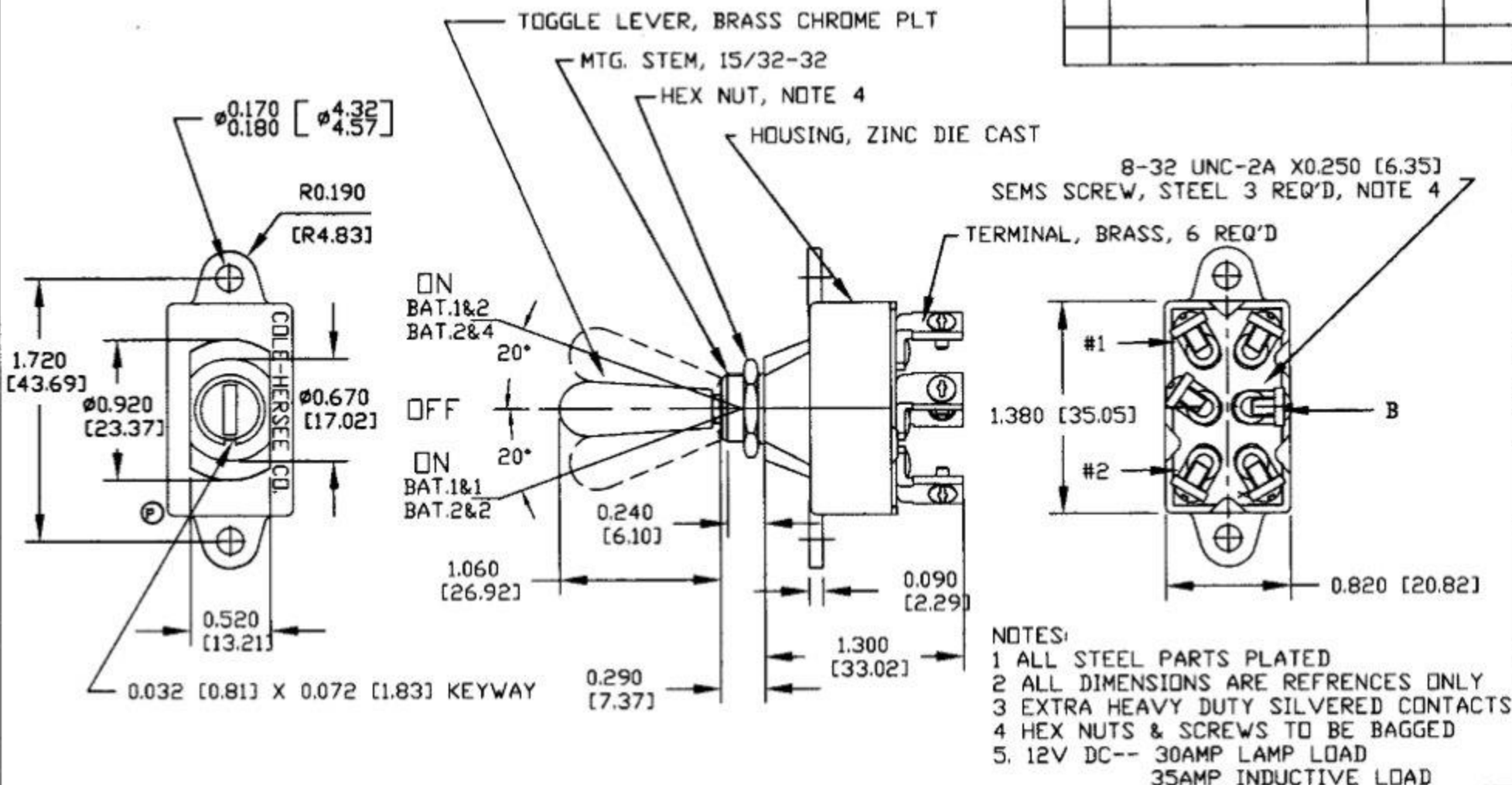
3. HEX NUT & SCREWS TO BE BAGGED
 DO NOT SCALE

METRIC

LET.	WAS	DATE	BY	LET.	WAS	DATE	BY	MATERIAL	DRAWN	CHECKED	APPR'D.	SCALE	DATE DRAWN
								— # —	RZ	6-2-80		1:1	5-5-65
								FINISH	Cole Hersee Co. <small>WILLIAMSBURG AVENUE SOUTH BOSTON, MA, U.S.A. 02117</small>				DATE BLUEPRINT
								TOLERANCES					DP-ST TOGGLE SWITCH
								DECIMAL ±					
								METRIC ± .25					

Revision Control Record

Rev.	Description of Change	ECN No.	Date
P	DELETE 'BOSTON U.S.A'	05040	01/18/05



- NOTES:
- 1 ALL STEEL PARTS PLATED
 - 2 ALL DIMENSIONS ARE REFERENCES ONLY
 - 3 EXTRA HEAVY DUTY SILVERED CONTACTS
 - 4 HEX NUTS & SCREWS TO BE BAGGED
 5. 12V DC-- 30AMP LAMP LOAD
35AMP INDUCTIVE LOAD

Tolerances Unless otherwise specifically noted, the following are default tolerances:
 * 2-place Decimal Dimensions $\pm .02"$
 * 3-place Decimal Dimensions $\pm .005"$
 * Angular Dimensions ± 1.0 Deg.
 * Metric: Refer to equivalent English Dimension Tolerance
 >>> NOTE: All tolerances are Non-Cumulative. <<<

Dimensional Units All dimensions are expressed in inches except those shown in brackets (xxx) are expressed in millimeters

"REF." or an Asterisk (*) = Non-Toleranced Reference Dimension, shown for identification purposes only.

PROPRIETARY INFORMATION This Engineering Drawing, and the information contained herein, is proprietary to Cole Hersee Company and may not be disclosed, re-produced, or in any other way transferred or communicated to any other party without the express written consent of an authorized representative of Cole Hersee Company.

DESIGN CONTROL It is the responsibility of the individual using / referencing this drawing to assure that the noted design revision level agrees with the revision level of the Controlled Document (Master Drawing). This is a NON-CONTROLLED DOCUMENT unless otherwise specifically noted.

DO NOT SCALE - Dimensional variation may occur during printing / reproduction.

Key for Special Characteristics:

- Critical Characteristic, relating to Safety and/or Regulatory Compliance
- Significant Characteristic relating to Process Control (SPC)
- Control Dimension relating to Form - Fit - Function as defined by Cole Hersee Company and/or the Customer

(Note that the identification of any Characteristic as being "Special" does not alter the requirement that ALL specified dimensions & tolerances must be met.)

Cole Hersee Co.
 20 Old Colony Ave., South Boston, MA, 02127
 Phn: 617-268-2100 Web: www.colehersee.com

Description:
 SW, DPDT, TOGGLE, SW

Drawing / Part No.: 551846

Current Rev.: P

MTG. STEM 15/32-32 UNS-2A

HOUSING - ZINC DIE CAST

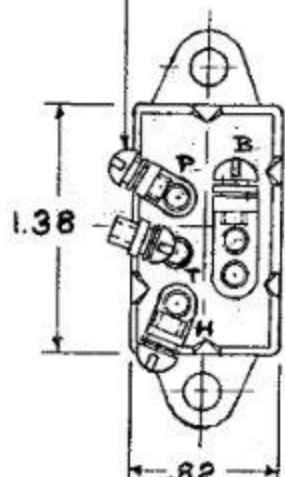
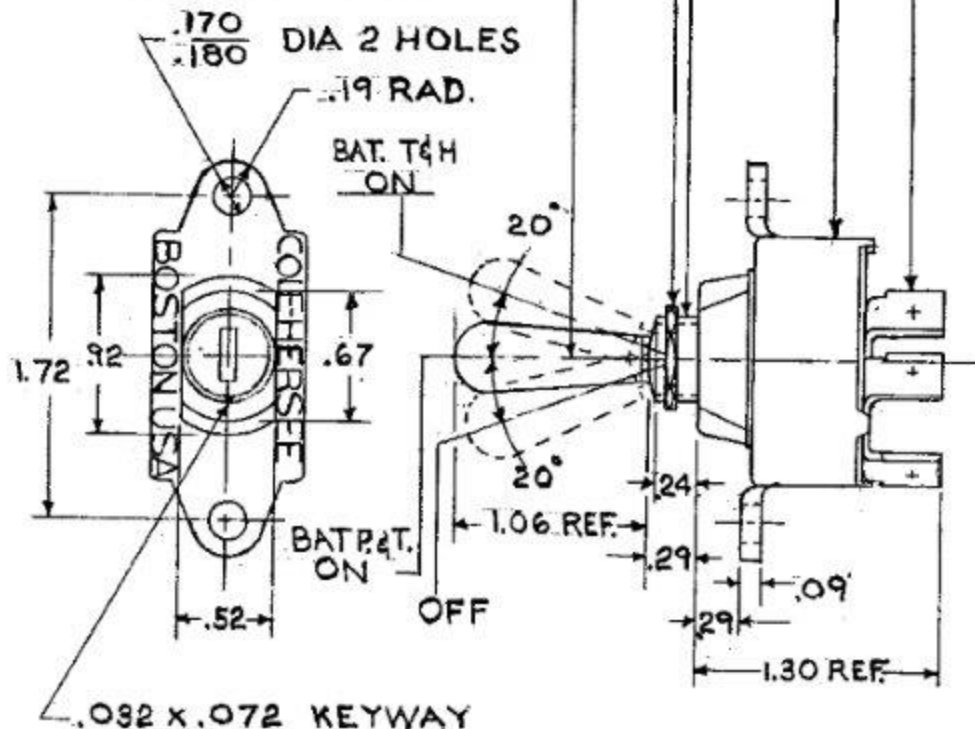
551849

83272 HEX NUT-STEEL

TOGGLE LEVER-BRASS
CHROME PLATE

TERMINAL - BRASS (P)

83073 SCREW-SEMS
8-32 X 1/4 LG. STEEL
(4 REQ'D)



NOTES:
1. EXTRA HEAVY DUTY SILVERED CONTACTS
2. ALL STEEL PARTS
① PLATED
3. HEX NUT & SCREWS TO BE BAGGED
DO NOT SCALE

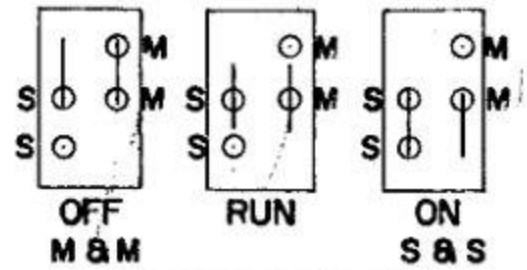
Confidential property of Cole Hersee

LEGEND	
PPARK LT.	
T TAIL LT.	
H HEAD LT.	

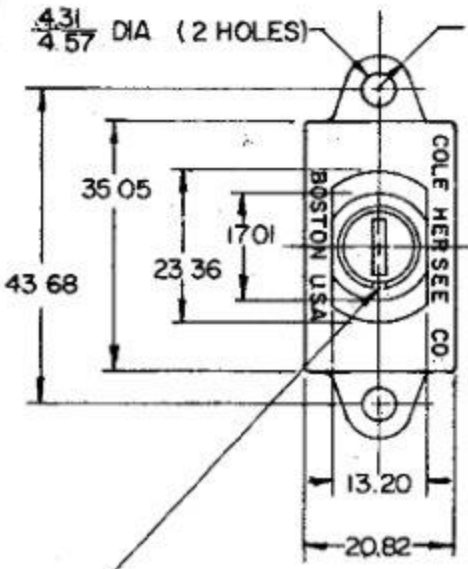
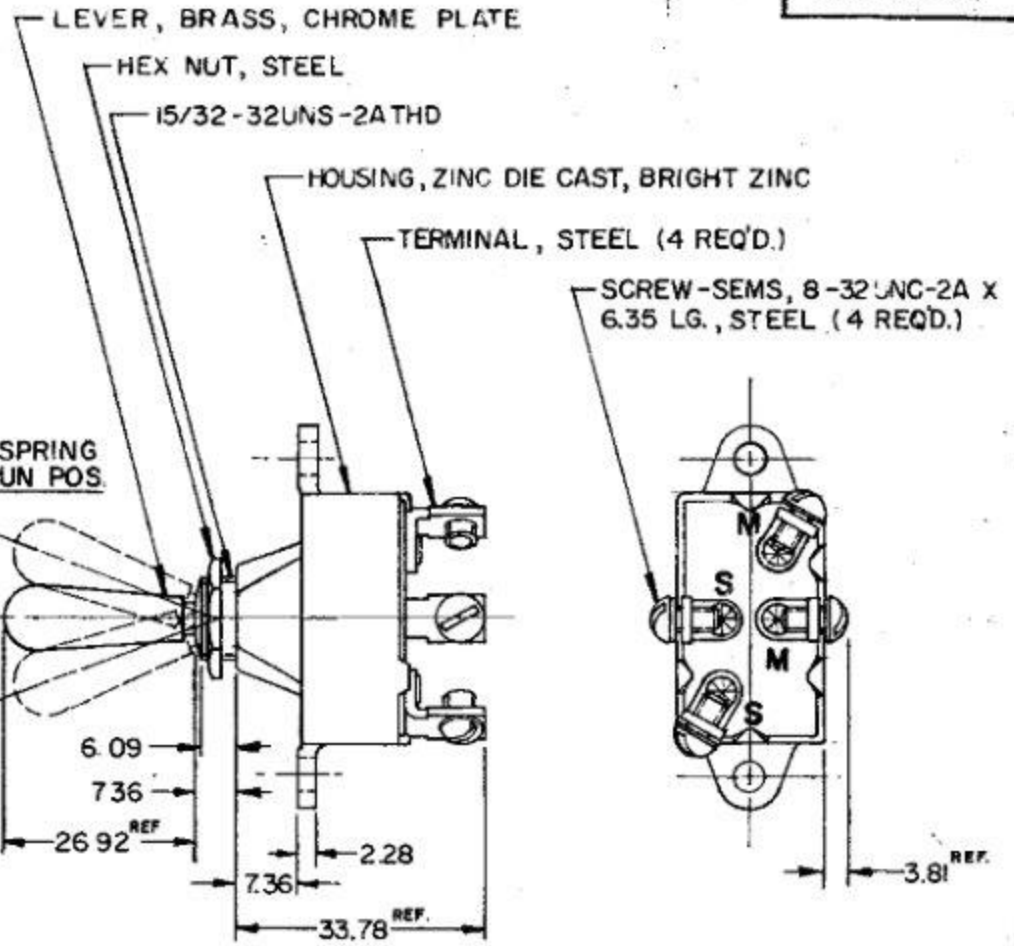
LET	NAME	DATE	BY	LET	NAME	DATE	BY	MATERIAL	DRAWN	CHECKED	APPROVD	SCALE	USED ON	DATE DRAWN
				K	STEBL/EGVRZ6987	9/3/97	BS		SB	U.M.		1=1		5-5-65
				J	CAD OR ZINC/25234	11/19/92	T/H	Finish	COLE-HERSEE COMPANY BOSTON, MASS. 02127, U.S.A.					DATE BLUEPRINT
				H	REV./19288	2-23-76	KS							
				G	ROB/16978	8-4-70	RW	TOLERANCES UNLESS SPECIFIED 3 DECIMAL = .010 2 DECIMAL = .005 ANGULAR = 2°	HEADLAMP SWITCH					PART NO 551849
L	ECM01005	1/16/02	3	F	NO CHANGE REDRAWN	5.12.70	J.B.							

MM	IN
0.25	.010
0.81	.032
1.82	.072
2.28	.090
3.81	.150
4.31	.170
4.57	.180
4.82	.190
6.09	.240
6.35	.250
7.36	.290
13.20	.520
17.01	.670
20.82	.820
25.36	.920
28.92	1.050
33.78	1.330
35.05	1.380
43.68	1.720

551862



CIRCUIT DIAGRAM



"ON" S & S - SPRING RETURN TO RUN POS.
 20° REF
 "RUN"
 20° REF
 "OFF" M & M

NOTES

1. SILVER CONTACT SURFACES.
2. MELAMINE LINER.
- ③ 3. ALL STEEL PARTS PLATED
- ④ 4. HEX NUT & SCREWS TO BE BAGGED

Confidential property of Cole Hersee

METRIC

DO NOT SCALE

LET	WAS	DATE	BY	LET	WAS	DATE	BY	MATERIAL	DRAWN	CHECKED	APPR'D.	SCALE	DATE DRAWN
									MF	9-13-78		1:1	12-28-66
								FINISH					DATE BLUEPRINT
				G	ORNO1005	1/14/01	Pg						
				F	CAD OR ZINC/25234	11/17/92	JH	TOLERANCES					
				E	REDRAWN	8-17-78	JV	FRACTIONAL ±					
								DECIMAL ± .25					
MAG - IGN. - START TOGGLE SWITCH												551862	

EX-14416

X-ON Electronics

Largest Supplier of Electrical and Electronic Components

Click to view similar products for [Toggle Switches](#) category:

Click to view products by [Littelfuse](#) manufacturer:

Other Similar products are found below :

[8928K478](#) [020017-13](#) [60012L](#) [6006L](#) [CS115W](#) [CS120W](#) [637H/25](#) [6663](#) [7101SPDV30BE](#) [7103SDV30BE](#) [7105D](#) [7108P3YAV2BE](#)
[71YY50282](#) [7300K36](#) [7301K38](#) [7306K36](#) [7310K36](#) [7506K4](#) [7592K6](#) [7660K12](#) [7691K14](#) [7700K1](#) [8391K108](#) [8396K108](#) [8811K17](#)
[8824K14](#) [8828K13](#) [8835K3](#) [8858K44](#) [PS83-121G](#) [1-1825192-0](#) [A201SCWZB04](#) [A207SYCB04](#) [A208J61ZQ0004](#) [A221T1TCQ](#)
[A323S1CWZQ](#) [A423S1CWZG-M8](#) [1201W](#) [12156AX408](#) [12147AGKX679](#) [12246X778](#) [12TW49-3D](#) [130312](#) [13037L](#) [13001X](#)
[AE101MD1W4B04](#) [AE208SD1W4B04](#) [MS24659-22D](#) [MS27407-5](#) [1520230-9](#)