



559/560 Series Fuse Holders for TE5/TR5 Type Fuses



559 Series Holder

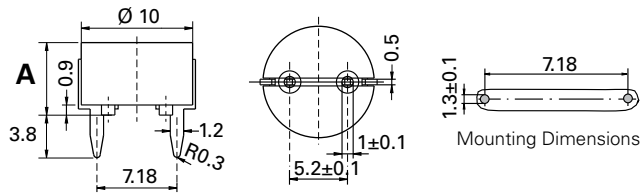
560 Series Holder

Agency Approvals

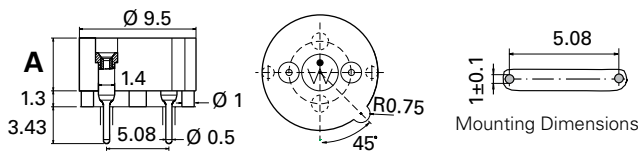
Agency	Agency File Number	
	559 Series	560 Series
	N/A	40041024
	N/A	E14721

Dimensions units in mm

559 Series



560 Series



Product Characteristics

	559 Series (Lead Free)	560 Series
Compatible Fuses	TR5/TE5	TR5/TE5
Materials	Holder: Black Thermoplastic, UL94 V-0	Holder: Thermoplastic, UL 94 V-0
	Metal Parts: Copper alloy; solderable tinned	
Electrical Data (23°C)	Rated Voltage: 250V	
	Max. Current/Power: 6.3 A /1.6 W	
Mounting	PC Board, 7.18 mm pin spacing	PC Board, 5.08 mm pin spacing
Solderability	max. 260 °C, 10 s (Wave)	
Minimum Cross Section	Conducting path - 0.1 mm ²	
Unit Weight	0.63 g	0,4 g

Note: Ensure proper fuseholder re-rating.

Ordering Information

Ordering Number	"A" Height Options	Packaging
559 0000 00 01	6.5 mm (code 0001)	1000 Pcs Bulk
559 0000 80 11	10 mm (code 8011)	100 Pcs Bulk
560 0000 13 19	3.0 mm (code 1319)	500 Pcs Bulk
560 0000 10 09	4.3 mm (code 1009)	500 Pcs Bulk
560 0000 10 19	4.3 mm (code 1019)	1000 Pcs Bulk

Additional Information



**Datasheet
559 Series**



**Resources
559 Series**



**Samples
559 Series**



**Datasheet
560 Series**



**Resources
560 Series**



**Samples
560 Series**

X-ON Electronics

Largest Supplier of Electrical and Electronic Components

Click to view similar products for [Fuse Holder](#) category:

Click to view products by [Littelfuse](#) manufacturer:

Other Similar products are found below :

[570-290-741P40](#) [0031.1351.01](#) [020417G](#) [020418E](#) [6R30A1B](#) [F30A3S](#) [80910030](#) [8601.2020](#) [G15A2SPQ](#) [9-3557-GP REV A](#) [HDJ-B](#)
[R6J30A3S](#) [HFH-1](#) [RF30A1S](#) [RF30A2B](#) [RF30A3SP](#) [BK/HHM](#) [BK/HJM-HH](#) [HTJ-LES-FUSE](#) [C4044-1](#) [2086-1](#) [2602](#) [2650](#) [178.000100](#)
[F60A2SQ](#) [T30A2B](#) [G4PB8](#) [2660](#) [CQ-209V](#) [HKP-CCHH](#) [R6F30A2S](#) [341001A](#) [345621A](#) [348670](#) [CVRMCC](#) [4202](#) [4407](#) [4408](#) [4413](#) [4423](#)
[4532](#) [4537](#) [TSD1404-12](#) [BPHHU](#) [HPC](#) [55900008011](#) [32NNL](#) [345602-010](#) [345603-010](#) [345612](#)