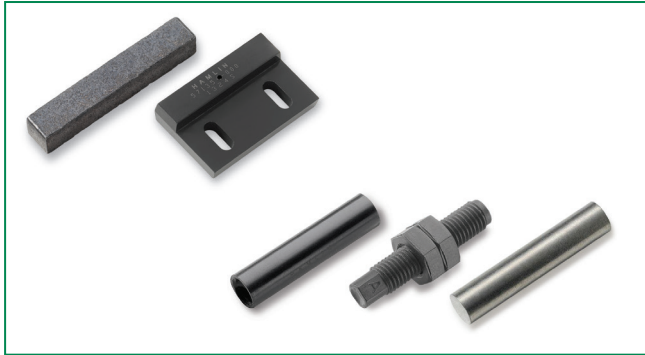


## Magnetic Actuators

RoHS



### Description

Littelfuse offers a wide range of magnetic actuators that are packaged in shapes similar to the relative mating sensors. We also offer a limited family of bare magnets with various grades of materials, including ferrite (ceramic), AlNiCo and neodymium iron boron (NdFeB) materials.

### Rectangular Actuators

These rectangular bare magnets and packaged actuators are ideally suited for mounting on a flat surface. They are suitable for use in a wide range of environments, including high-temperature applications.

Product Series	Description	Overall Dimensions		Material	Retentivity	Coercivity	Recommended Operating Temp.
		mm (inch)					°C
		L x W x H					
H-31	AlNiCo Magnet	12.70 (0.500) x 1.60 (0.062) x 1.60 (0.062)		AlNiCo-5	10,900	620	450
H-32	AlNiCo Magnet	25.40 (1.000) x 4.80 (0.190) x 4.80 (0.190)		AlNiCo-5	10,900	620	450
H-33	AlNiCo Magnet	19.10 (0.750) x 3.20 (0.120) x 3.20 (0.120)		AlNiCo-5	10,900	620	450
H-34	AlNiCo Magnet	25.40 (1.000) x 6.35 (0.250) x 6.35 (0.250)		AlNiCo-5	10,900	620	450
H-40	Neodymium Magnet	7.62 (0.300) x 3.18 (0.125) x 3.18 (0.125)		NdFeB 45H	13,300	11,800	120
H-41	Neodymium Magnet	19.05 (0.750) x 3.18 (0.125) x 3.18 (0.125)		NdFeB 35H	11,700	10,800	120
H-58	Neodymium Magnet	21.00 (0.827) x 7.00 (0.276) x 4.70 (0.185)		NdFeB 35H	11,700	10,800	120
57105	Actuator for Terminal Flange Mount Sensor	40.17 (1.582) x 19.05 (0.750) x 6.35 (0.250)		AlNiCo-5	11,000	620	105
57125	Actuator for Pinned Flange Mount Sensor	28.57 (1.125) x 19.05 (0.750) x 6.35 (0.250)		AlNiCo-5	11,000	620	105
57135	Actuator for High-Temp Flange Mount Sensor	28.57 (1.125) x 19.05 (0.750) x 6.35 (0.250)		AlNiCo-5	12,800	640	150
57140	Actuator for Mini Flange Mount Sensor	23.00 (0.906) x 14.00 (0.551) x 6.00 (0.236)		AlNiCo-5	11,000	620	105
57141	Actuator for Mini Flange Mount Sensor	23.00 (0.906) x 14.00 (0.551) x 6.00 (0.236)		AlNiCo-5	11,000	620	105
57142	Actuator for Mini Flange Mount Sensor	23.00 (0.906) x 14.00 (0.551) x 6.00 (0.236)		NdFeB 35H	11,700	10,800	105
57145	Actuator for Flange Mount Sensor	28.57 (1.125) x 19.05 (0.750) x 6.35 (0.250)		AlNiCo-5	11,000	620	105
57150	Actuator for Flange Mount Sensor	28.57 (1.125) x 19.05 (0.750) x 6.35 (0.250)		AlNiCo-5	11,000	620	105
57045	Actuator for Mini PCB Mount Overmolded	17.78 (0.700) x 3.30 (0.130) x 4.32 (0.170)		AlNiCo-5	11,000	620	105
57050	Actuator for PCB Mount Overmolded	22.86 (0.900) x 4.57 (0.180) x 4.57 (0.180)		AlNiCo-5	11,000	620	105

### Cylindrical Actuators

Designed for mounting on a frame, these cylindrical bare magnets and packaged actuators are appropriate for use in a wide range of environments, including high-temperature applications.

Product Series	Description	Overall Dimensions		Material	Retentivity	Coercivity	Recommended Operating Temp.
		mm (inch)					°C
		Ø x L					
H-35	Neodymium Magnet	6.35 (0.250) x 6.35 (0.250)		NdFeB 35H	11,700	10,800	120
H-48	Neodymium Magnet	4.40 (0.173) x 6.00 (0.236)		NdFeB 35SH	11,700	10,800	150
CM-1	Ceramic Magnet	12.70 (0.500) x 5.08 (0.200)		Ceramic-5	3,900	2,400	250
H-36	AlNiCo Magnet	4.60 (0.182) x 25.40 (1.000)		AlNiCo-5	12,800	640	450
H-315	AlNiCo Magnet	3.00 (0.118) x 15.00 (0.590)		AlNiCo-5	11,000	620	450
H-420	AlNiCo Magnet	4.00 (0.157) x 20.0 (0.787)		AlNiCo-5	11,000	620	450
H-625	AlNiCo Magnet	6.00 (0.236) x 25.0 (0.984)		AlNiCo-5	11,000	620	450
57020	Actuator for Mini Firecracker	5.10 (0.201) x 15.24 (0.600)		AlNiCo-5	11,000	620	105
57022	Actuator for Firecracker	5.80 (0.228) x 25.40 (1.000)		AlNiCo-5	11,000	620	105
57025	Actuator for Firecracker	6.22 (0.245) x 25.40 (1.000)		AlNiCo-5	11,000	620	105
57030	Actuator for Long Firecracker	6.22 (0.245) x 38.10 (1.500)		AlNiCo-5	11,000	620	105
57040	Actuator for Firecracker with Retaining Ribs	10.70 (0.420) x 31.00 (1.220)		NdFeB 35H	11,700	10,800	105
57060	Actuator for Stainless Steel Threaded Barrel Sensor	M8 x 1.25 Pitch x 36.00 (1.420)		AlNiCo-5	11,000	620	105
57065	Actuator for Threaded Barrel Sensor (Standard)	(5/16 x 24) Pitch x 38.10 (1.500)		AlNiCo-5	11,000	620	105
57070	Actuator for Threaded Barrel Sensor (Metric)	M8 x 1.25 Pitch x 38.10 (1.500)		AlNiCo-5	11,000	620	105
57075	Actuator for Heavy Duty Threaded Barrel Sensor	M12 x 1.00 Pitch x 46.00 (1.810)		Ceramic-2	2,900	2,400	105

## X-ON Electronics

Largest Supplier of Electrical and Electronic Components

*Click to view similar products for [RF Mil Spec Connectors](#) category:*

*Click to view products by [Littelfuse](#) manufacturer:*

Other Similar products are found below :

[M390303-02N](#) [M39030/3-04S](#) [M55339/38-00001](#) [CTVP00RW-25-35S\(506\)](#) [M39012/55-3106](#) [M39012/55-3125](#) [M39012/55-3008](#)  
[M39012/55-3107](#) [M39012/55-3027](#) [UG-23D/U\(40\)](#) [UG-306/U\(40\)](#) [M55339/28-30002](#) [UG-492/U](#) [M39012/55-3126](#) [UG-29B/U\(45\)](#) [UG-](#)  
[274/U\(40\)](#) [625-MAGNET](#) [M39012/28-0010](#) [M39012/26-0101](#) [M39030/5-06N](#) [M39012/79-3108](#) [M39012/79B3001](#) [1112-6138](#) [M39012/16-](#)  
[0101](#) [M3901225-0015](#) [M3901225-0111](#) [M3901225-0120](#) [M3901225-3027](#) [M39012/26-0012](#) [M39012/26B0015](#) [M39012/28-0022](#)  
[M3901229-0101](#) [M39012/31-0002](#) [M39012/33-0001](#) [M39012/55-3006](#) [M39012/55-3028](#) [M39012/55-3109](#) [M39012/55-3128](#) [M3901255-](#)  
[3129](#) [M3901255B3012](#) [M39012/55B3015](#) [M3901255B3112](#) [M39012/55B3116](#) [M39012/56-3106](#) [M39012/56-3107](#) [M39012/56-3109](#)  
[M39012/56B3019](#) [M39012/56B3021](#) [M39012/57-3026](#) [M39012/58-3007](#)