

THREAD DIM'S BEFORE PLATING: (G-0695)  
 MAJOR DIA. .506 MIN.  
 PITCH DIA. .477/.481  
 MINOR DIA. .457/.461

THREAD DIM'S AFTER PLATING: (G-0684)  
 MAJOR DIA. .505 MIN.  
 PITCH DIA. .476/.481  
 MINOR DIA. .456/.461

FINISH NOTE:

ELECTRODEPOSITED ZINC COATING WITH SUPPLEMENTARY FINISH PER: ASTM B633-98  
 CLASSIFICATION Fe/Zn 12 SERVICE CONDITION SC3 TYPE II YELLOW CHROMATE CONVERSION COATING (SEE NOTE 4)

NO	COMPONENT NO	DESCRIPTION	QTY/M	U/M

BILL OF MATERIAL			
CDPLIES TO	MATL SPEC (AS SUPPLIED, STEEL POWDER(S))	FINISH	SEE FINISH NOTE & NOTE 4
1	9 18 DRW	JMB	DATE 2/18/88 SCALE 2=1
2	10 19	CHK	DATE SUPER DRW
3	12 20	APPD	DATE RAW STK WT
4	13 21		
5	14 23		
6	15 33		
7	16 43		
8	17 53		

TOLERANCE UNLESS OTHERWISE SPECIFIED  
 TWO PLACE DEC ±.01 FRACTION ±1  
 THREE PLACE DEC ±.005 ANGULAR ±1°

HEX NUT

HEXAGON	DRWG. NO.	903-012
AT		
DES PLAINES, ILL INOIS	60016	

LTR	REVISION	CHK	APD
AR	39025C- REVISED & REDRAWN ON NEW FORMAT 3/13/98 JMB		
AS	80518C - ADD FINISH NOTE, CHG. NOTE 4		
--	4/4/2000	BJJ	
AT	82142D-CHG F0005-20 TO F-00006-.65 MIN. DEN. 5/22/02 P.J.M		

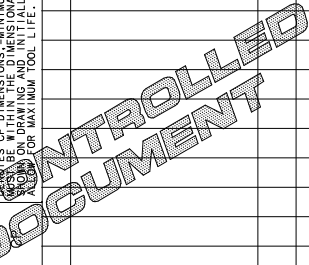
NOTES:

1. AXIS OF THREAD TO BE ⊥ WITHIN 1" TO FACE OF NUT. PITCH DIA. & MAJOR DIA. TO BE CONCENTRIC WITH MINOR DIA. WITHIN .007 T.I.R.
2. PART MUST SPIN FREELY ON "GO" GAGE. PART MAY ENTER "NO-GO" GAGE A MAXIMUM OF TWO THREADS. USE GAGE G-0695 BEFORE PLATING. USE GAGE G-0684 AFTER PLATING.
3. UNPLATED PARTS TO BE PROTECTED AGAINST OXIDATION UNTIL PLATING; PLATING TO BE DONE AS SOON AS POSSIBLE AFTER FABRICATION.
4. PLATED PARTS SHALL MEET THE SALT SPRAY REQUIREMENTS ASTM B-117 96 HOUR SALT SPRAY TEST. (CERTIFICATION REQUIRED).
5. VENDOR & L/F THREAD GAGE CORRELATION REQUIRED.
6. LITTELFUSE TO PLACE 100 NUTS IN BAG -896-259.

UNLESS OTHERWISE SPECIFIED, DIMENSIONS DO NOT INCLUDE PLATING.

CPK DENOTES CRITICAL CHARACTERISTICS.  
 CPK DENOTES CPK DIMENSIONS - MINIMUM CPK VALUE  
 DENOTES A CHARACTERISTIC THAT PROVIDES AN INDICATION OF THE PROCESS CAPABILITY TO MEET THE REQUIREMENT FOR MEASUREMENT (CPK) BY TAKING TO THE INDICATED MEASUREMENT PROCEDURE.  
 SELF-INSPECT OR INSTRUCTIONS.

CPK DENOTES CP DIMENSIONS - MINIMUM CP VALUE  
 DENOTES THE DIMENSIONAL LIMITATIONS (CPK) WITHIN THE DIMENSIONAL LIMITATIONS (CPK) FOR MAXIMUM TOOL LIFE.



## X-ON Electronics

Largest Supplier of Electrical and Electronic Components

*Click to view similar products for [Fuse Holder Accessories](#) category:*

*Click to view products by [Littelfuse](#) manufacturer:*

Other Similar products are found below :

[BK/1A1337](#) [1A1853](#) [1A4421](#) [1A5220](#) [903-048](#) [1A1337](#) [1A4544](#) [1A5220-01](#) [CO2-10](#) [CO3-03](#) [348897](#) [B072-7007](#) [BK/1A4421](#) [BK/9732](#)  
[X30110](#) [09030012H](#) [09050023H](#) [00970021HXNVDL](#) [00BS0232P](#) [CO2-04](#) [BK1A1853](#) [BK9834](#) [0880.0001](#) [00970053XP](#) [3566C](#)  
[00970053H](#) [04450718ZX900](#) [CH10CL](#) [BP/FP-3](#) [58600000005](#) [33-012C](#) [880140](#) [00970023S](#) [880150](#) [PDM71009ZXM](#) [B109-7091-4](#) [B109-](#)  
[7091-6](#) [B109-7091-5](#) [901-524](#) [CVR-RH-25100](#) [LFH60030FBC](#) [03540514Z](#) [03540526Z](#) [03540531Z](#) [03540541Z](#) [03540525Z](#) [03540537Z](#)  
[03540539Z](#) [03540540Z](#) [FEH](#)