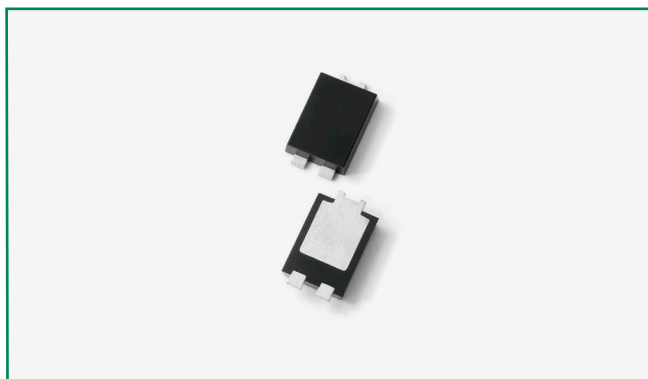
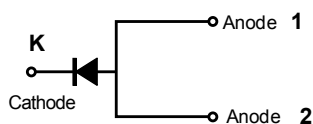


### DST5100S

HF RoHS Pb e3



#### Pin out



#### Description

Littelfuse DST series Ultra Low  $V_F$  Schottky Barrier Rectifier is designed to meet the general requirements of commercial and industry applications by providing high temperature, low leakage and lower  $V_F$  products.

It is suitable for high frequency switching mode power supply, free-wheeling diodes and polarity protection diodes.

#### Features

- Ultra low forward voltage drop
- High frequency operation
- MSL: Level 1 - unlimited
- High junction temperature capability
- Trench MOS Schottky technology
- Single die in TO-277B Package
- Pb-free E3 means 2nd level interconnect is Pb-free and the terminal finish material is tin(Sn) (IPC/ JEDEC J-STD-609A.01)

#### Applications

- Switching mode power supply
- DC/DC converters
- Free-Wheeling diodes
- Polarity Protection Diodes

#### Maximum Ratings

Parameters	Symbol	Test Conditions	Max	Unit
Peak Inverse Voltage	$V_{RWM}$	-	100	V
Average Forward Current (per device) *	$I_{F(AV)}$	50% duty cycle @ $T_L = 125^\circ\text{C}$ rectangular wave form	5	A
Peak One Cycle Non-Repetitive Surge Current (per leg)	$I_{FSM}$	8.3 ms, half Sine pulse	120	A

\* Mounted on 30 mm x 30 mm pad areas aluminum PCB

#### Electrical Characteristics

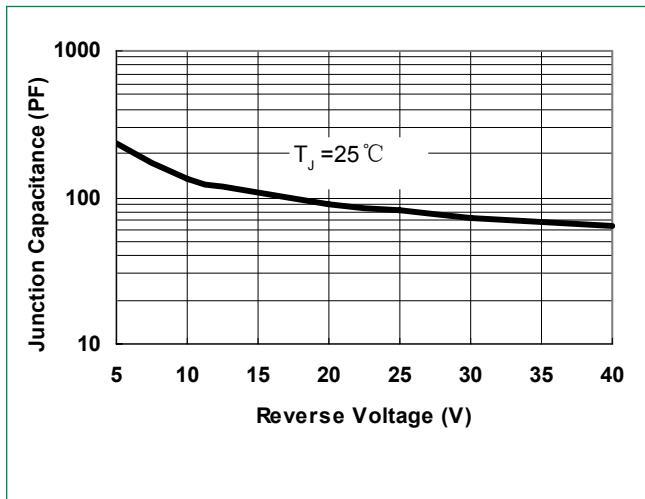
Parameters	Symbol	Test Conditions	Typ	Max	Unit
Forward Voltage Drop (per leg) *	$V_{F1}$	@5A, Pulse, $T_J = 25^\circ\text{C}$	0.69	0.75	V
	$V_{F2}$	@5A, Pulse, $T_J = 125^\circ\text{C}$	0.61	0.70	
Reverse Current (per leg) *	$I_{R1}$	@ $V_R = \text{rated } V_R, T_J = 25^\circ\text{C}$	0.06	0.12	mA
	$I_{R2}$	@ $V_R = \text{rated } V_R, T_J = 125^\circ\text{C}$	2	18	
Junction Capacitance (per leg)	$C_T$	@ $V_R = 5\text{V}, T_C = 25^\circ\text{C}, f_{SIG} = 1\text{MHz}$	245	-	pF
Voltage Rate of Change	dv/dt		-	10000	V/ $\mu\text{s}$

\* Pulse Width < 300 $\mu\text{s}$ , Duty Cycle < 2%

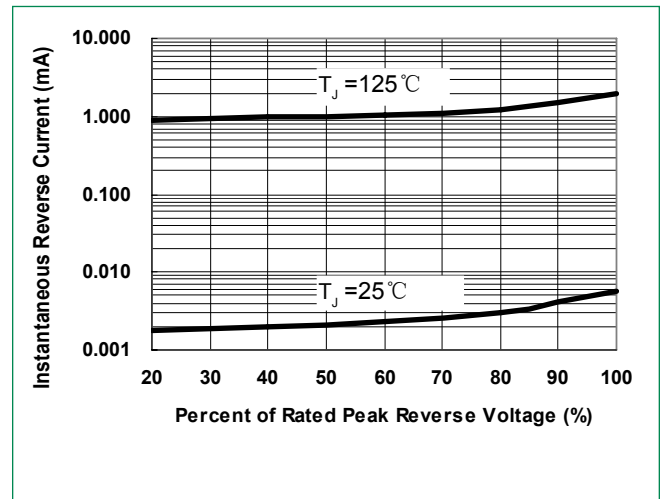
### Thermal-Mechanical Specifications

Parameters	Symbol	Test Conditions	Max	Unit
Junction Temperature	$T_J$		-55 to +150	°C
Storage Temperature	$T_{stg}$		-55 to +150	°C
Maximum Thermal Resistance Junction to Ambient	$R_{thJA}$	DC operation	75	°C/W
Maximum Thermal Resistance Junction to Lead	$R_{thJL}$		4	°C/W
Approximate Weight	wt		0.08	g
Case Style		TO-277B		

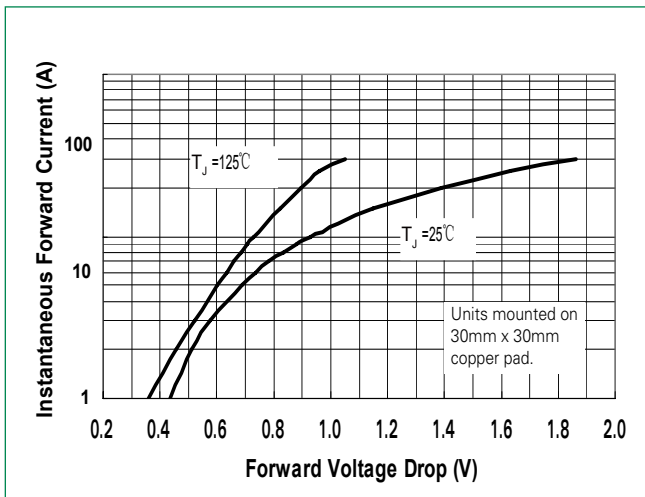
**Figure 1: Typical Junction Capacitance**



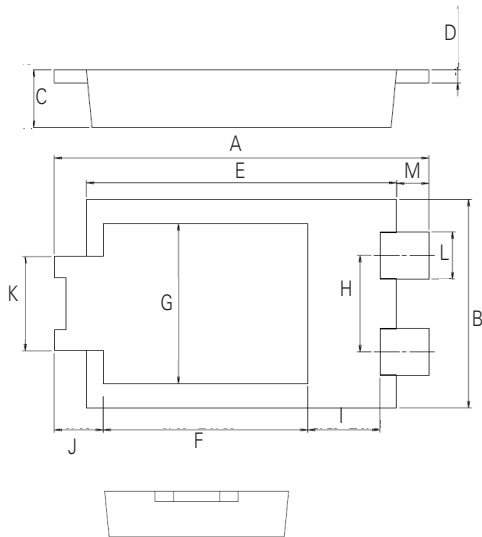
**Figure 2: Typical Reverse Characteristics**



**Figure 3: Typical Instantaneous Forward Voltage Characteristics**

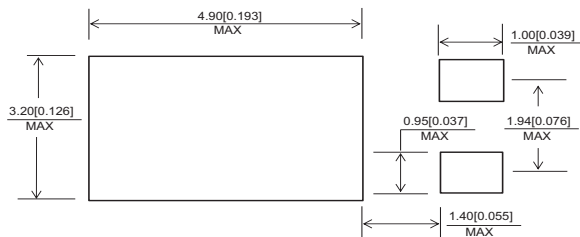


### Dimensions-TO-277B

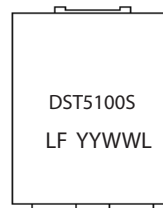


Symbol	Millimeters		
	Min	Typ	Max
<b>A</b>	6.30	6.50	6.70
<b>B</b>	3.88	3.98	4.08
<b>C</b>	0.95	1.10	1.25
<b>D</b>	0.20	0.25	0.30
<b>E</b>	5.28	5.38	5.48
<b>F</b>	3.40	3.55	3.70
<b>G</b>	2.90	3.05	3.20
<b>H</b>	1.74	1.84	1.94
<b>I</b>	1.10	1.25	1.40
<b>J</b>	-	0.85	-
<b>K</b>	1.70	1.80	1.90
<b>L</b>	0.85	0.90	0.95
<b>M</b>	-	0.56	-

### Mounting Pad Layout



### Part Numbering and Marking System

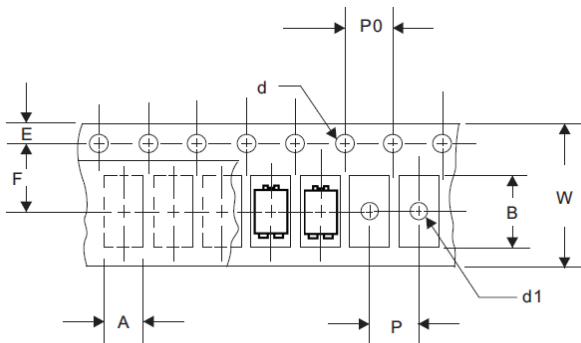


**DST** = Device Type  
**5** = Forward Current (5A)  
**100** = Reverse Voltage (100V)  
**S** = Package Type  
**LF** = Littelfuse  
**YY** = Year  
**WW** = Week  
**L** = Lot Number

### Packing Options

Part Number	Marking	Packing Mode	M.O.Q
DST5100S	DST5100S	5000pcs / Reel	5000

### Carrier Tape & Reel Specification



Symbol	Millimeters	
	Min	Max
<b>A</b>	4.28	4.48
<b>B</b>	6.80	7.00
<b>d</b>	1.40	1.60
<b>d1</b>	-	1.50
<b>E</b>	1.65	1.85
<b>F</b>	5.40	5.60
<b>P</b>	7.90	8.10
<b>P0</b>	3.90	4.10
<b>W</b>	11.70	12.30

## X-ON Electronics

Largest Supplier of Electrical and Electronic Components

*Click to view similar products for [Schottky Diodes & Rectifiers](#) category:*

*Click to view products by [Littelfuse](#) manufacturer:*

Other Similar products are found below :

[MA4E2039](#) [D1FH3-5063](#) [MBR10100CT-BP](#) [MBR1545CT](#) [MMBD301M3T5G](#) [RB160M-50TR](#) [RB551V-30](#) [BAS16E6433HTMA1](#) [BAT](#)  
[54-02LRH E6327](#) [NSR05F40QNXT5G](#) [NTE555](#) [JANS1N6640](#) [SB07-03C-TB-H](#) [SB1003M3-TL-W](#) [SK310-T](#) [SK32A-LTP](#) [SK34B-TP](#)  
[SS3003CH-TL-E](#) [GA01SHT18](#) [CRS10I30A\(TE85L,QM](#) [MA4E2501L-1290](#) [MBRB30H30CT-1G](#) [SB007-03C-TB-E](#) [SK32A-TP](#) [SK33B-TP](#)  
[SK38B-TP](#) [NRVBM120LT1G](#) [NTE505](#) [NTSB30U100CT-1G](#) [SS15E-TP](#) [VS-6CWQ10FNHM3](#) [ACDBA1100LR-HF](#) [ACDBA1200-HF](#)  
[ACDBA140-HF](#) [ACDBA2100-HF](#) [ACDBA3100-HF](#) [CDBQC0530L-HF](#) [CDBQC0240LR-HF](#) [ACDBA260LR-HF](#) [ACDBA1100-HF](#)  
[SK310B-TP](#) [MA4E2502L-1246](#) [MA4E2502H-1246](#) [NRVBM120ET1G](#) [NSR01L30MXT5G](#) [NTE573](#) [NTE6081](#) [SB560](#) [PMAD1108-LF](#)  
[SD103ATW-TP](#)