

Protection Relays

ELCT SERIES

Current Transformer



Description

The ELCT series is a sensitive current transformer with integrated flux conditioner used with Littelfuse relays to detect low levels of earth-leakage current.

Accessories



CBLTP

Twisted-pair wire for connection to CT. Order in desired length in meters.

Ordering Information

| ORDERING NUMBER | TURNS RATIO | WINDOW SIZE, ID | WEIGHT |
|-----------------|-------------|-----------------|--------------------|
| ELCT5-31 | 100:1 | 31mm (1.22 in) | 127.0 g (0.28 lbs) |
| ELCT5-88 | 100:1 | 88mm (3.46 in) | 635.0 g (1.40 lbs) |
| ELCT30-31 | 600:1 | 31mm (1.22 in) | 131.5 g (0.29 lbs) |
| ELCT30-88 | 600:1 | 88mm (3.46 in) | 680.4 g (1.50 lbs) |

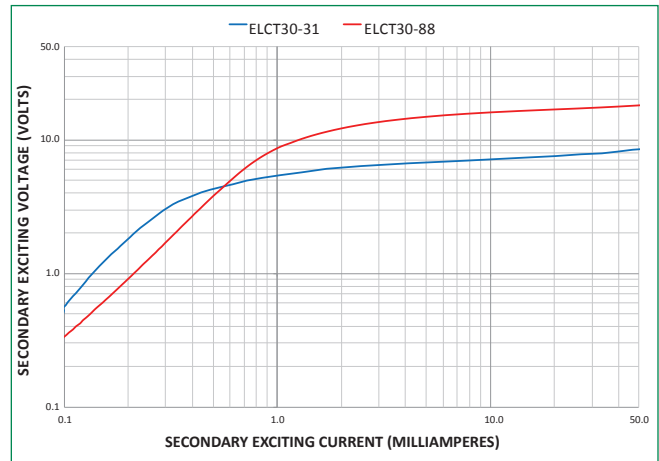
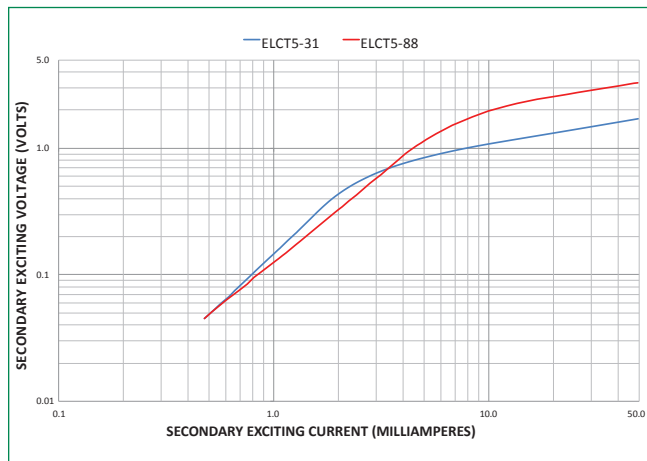
Specifications

| | |
|------------------------------|---|
| Current Rating | ELCT5: 5:0.05 A ELCT30: 30:0.05A |
| Accuracy | ELCT5: 3 % @ 0.01 VA ELCT30: 3 % @ 0.06 VA |
| Frequency | 50 to 400 Hz |
| Insulation Level | 600V |
| Operating Temperature | -40 to 55 °C (-40 to 131 °F) |
| Application | SE-701 |
| Wire Gauge | 0.05-3.3 mm ² (12-30 AWG) |
| Tightening Torque | 0.5 N-m |
| Certification | UL, cUL, CE |
| Compliance | RoHS, IEC 61869-2, ANSI/IEEE C57.13 |

Note: One frequency response may be extended for specific product families

Recommended Relay

Series: SE-330



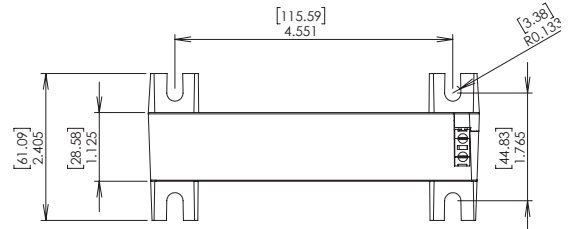
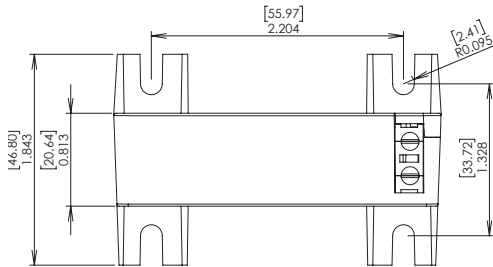
Protection Relays

ELCT SERIES

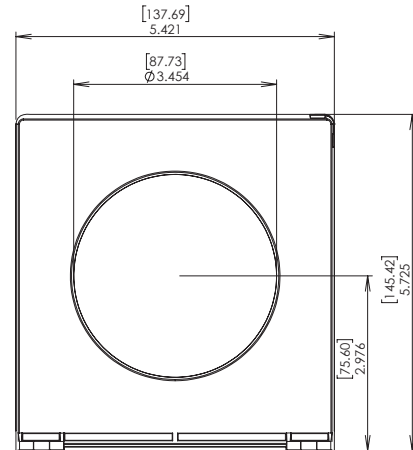
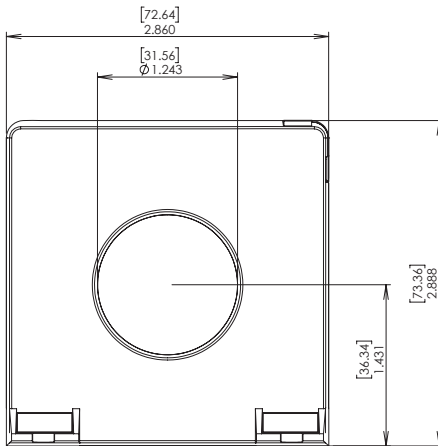
Dimensions and Mounting Diagram

Inches [millimeters]

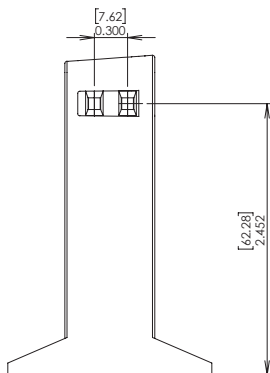
Mount the ELCT5-31 and ELCT30-31 using M5 or #10 screws.
 Mount the ELCT5-88 and ELCT30-88 using M6 or 1/4" screws.



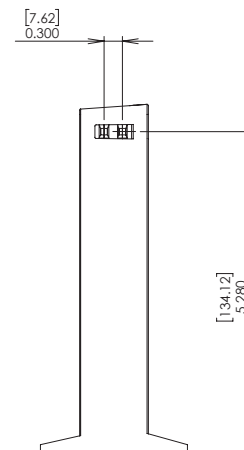
TOPVIEW AND MOUNTING DETAIL



FRONT VIEW



ELCT5-31 and ELCT30-31



ELCT5-88 and ELCT30-88

SIDE VIEW

Disclaimer Notice – Information furnished is believed to be accurate and reliable. However, users should independently evaluate the suitability of and test each product selected for their own applications. Littelfuse products are not designed for, and may not be used in, all applications. Read complete Disclaimer Notice at www.littelfuse.com/product-disclaimer.

X-ON Electronics

Largest Supplier of Electrical and Electronic Components

Click to view similar products for [Current Transformers](#) category:

Click to view products by [Littelfuse](#) manufacturer:

Other Similar products are found below :

[L595100](#) [ACST-260](#) [MP3500](#) [L595050](#) [E54CT1L](#) [CTD-KIT](#) [44021](#) [44104](#) [44176](#) [44248](#) [45041](#) [45071](#) [PA3828NL](#) [CT16-1-50A/50MA](#)
[SPCT 100/60 1200/5A VA 15 CL 0.5](#) [SPCT 100/60 1000/5A VA 15 CL 0.5](#) [SPCT 100/60 600/5 A VA 7.5 CL 1](#) [SPCT 100/60 600/5 A VA 5](#)
[CL 0.5](#) [SPCT 100/60 800/5 A VA 10 CL 0.5](#) [SPCT 140/100 1200/5A VA 15 CL 0.5](#) [SPCT 140/100 1250/5A VA 15 CL 0.5](#) [SPCT 140/100](#)
[1500/5A VA 15 CL 0.5](#) [SPCT 140/100 1600/5A VA 15 CL 0.5](#) [SPCT 140/100 1000/5A VA 15 CL 0.5](#) [SPCT 140/100 2500/5A VA 15 CL 0.5](#)
[SPCT 140/100 2000/5A VA 15 CL 0.5](#) [SPCT 140/100 3000/5A VA 15 CL 0.5](#) [SPCT 140/100 800/5A VA 15 CL 0.5](#) [SPCT 62/30 50/5A VA1](#)
[CL 3](#) [SPCT 62/30 60/5A VA1 CL 3](#) [SPCT 62/30 75/5A VA1 CL 3](#) [SPCT 62/30 75/5A VA3 CL 3](#) [SPCT 62/40 100/5 A VA 1 CL 1](#) [SPCT](#)
[62/40 125/5 A VA 1 CL 1](#) [SPCT 62/40 150/5 A VA 3 CL 1](#) [SPCT 62/40 160/5 A VA 1.5 CL 1](#) [SPCT 62/40 200/5 A VA 3 CL 1](#) [SPCT 62/40](#)
[250/5 A VA 2.5 CL 0.5](#) [SPCT 62/40 250/5 A VA 3 CL 1](#) [SPCT 62/40 300/5 A VA 3 CL 0.5](#) [SPCT 62/40 400/5 A VA 3.75 CL 0.5](#)
[2CSM029000R1211](#) [HPT205NBJ-1](#) [HCT204KFH](#) [HCT20K-QD](#) [HPT205A/F](#) [HCT-1\(80\)AH](#) [HCT916HBT-1W](#) [CT100A](#) [PVS100/230/110V](#)