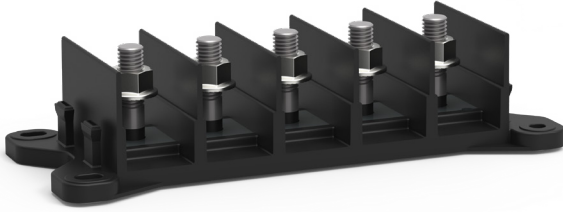
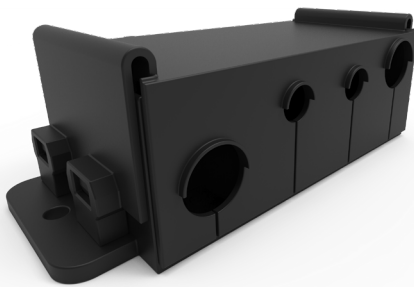


ZCASE® 4P-5P SERIES

400 A Bolt-Down Fuse Holders



FHZ415



FHZ416

Description

ZCASE® 4P-5P Series 400 A Bolt-Down Fuse Holders are four-position and five-position automotive fuse blocks that enable circuit-protected power distribution with ZCASE® fuses (sold separately). These DC power distribution blocks have thermoplastic bases and protective covers with UL 94 V-0 flammability ratings and have been tested to ISO 16750-3 standards for shock and vibration.

Web Resources

Download 2D print, installation guide and technical resources at: littelfuse.com/4p-5pseries

Ordering Information

PART NUMBER	DESCRIPTION	CONTINUOUS CURRENT RATING	FUSE TYPE	MOUNTING METHOD	MAX VOLTAGE RATING
FHZ416	32 V 400 A Four-Position Bolt-Down Fuse Holder Base and Cover	400 A	ZCASE	M8 Stud Mount Hole	32 V
FHZ415	80 V 400 A Five-Position Bolt-Down Fuse Holder Base	400 A	ZCASE	M10 Stud Mount Hole	80 V
FHZ515	Five-Position Fuse Holder Cover	-	-	-	-

Specifications

Max Voltage Rating:	32 V, 80 V
Agency Approval - Shock:	ISO16750-3 4.3
Agency Approval - Vibration:	ISO16750-3 4.1.2.7
Current Rating Continuous:	400 A
Flammability Rating:	UL 94 V-0
Fuse Type:	ZCASE®
Input Terminals:	M8 Stud Mount Hole
Output Terminals:	M8 Stud, M10 Stud
Recommended Torque:	M8 Nut: 10-14 N-m, M 10 Nut: 6-8 N-m
Operating Temperature (C):	-40°C to 85°C

Applications

- Heavy Trucks
- Medium-Duty Trucks
- Construction Equipment
- Agricultural Vehicles

Features and Benefits

- Four-position fuse holders accept ZCASE® M8 fuses and are rated for up to 32 V
- Five-position fuse holders accept ZCASE® M10 fuses and are rated for up to 80 V
- Thermoplastic base and cover have a UL 94 V-0 flammability rating
- Tested to ISO 16750-3 4.3 and ISO 16750-3 4.1.2.7 standards for shock and vibration to withstand harsh conditions that are common for commercial vehicles

X-ON Electronics

Largest Supplier of Electrical and Electronic Components

Click to view similar products for [Fuse Holder](#) category:

Click to view products by [Littelfuse](#) manufacturer:

Other Similar products are found below :

[0031.1351.01](#) [6R30A1B](#) [6SC30A2IC](#) [F30A3S](#) [F600A3B](#) [80910030](#) [80910080](#) [9-3557-GP REV A](#) [HFH-1](#) [RF30A1S](#) [RF30A2B](#) [RF30A3SP](#)
[15602-04-08-21](#) [HTJ-LES-FUSE](#) [RTMF-SC](#) [2602](#) [2650](#) [178.000100](#) [F60A2SQ](#) [T30A2B](#) [G4PB8](#) [2660](#) [HKP-CCHH](#) [R6F30A2S](#) [341001A](#)
[345621A](#) [348670](#) [CVRMCC](#) [4202](#) [4408](#) [4423](#) [4532](#) [4537](#) [TSD1404-12](#) [HPC](#) [55900008011](#) [345602-010](#) [345603-010](#) [345612](#) [345903A](#)
[3578](#) [3833-5](#) [3833-7](#) [3992](#) [4393](#) [4409](#) [4522](#) [4574](#) [02800031Z](#) [ESFH04/HTCC35M](#)