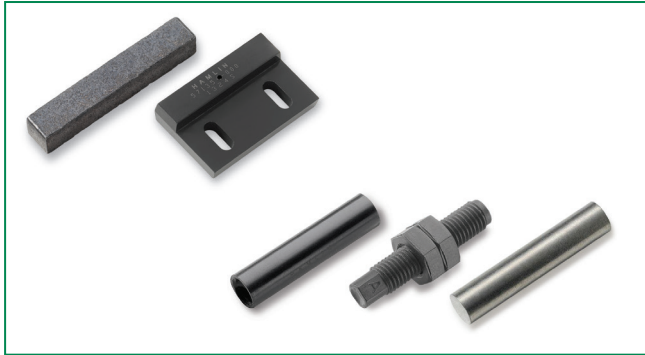


## Magnetic Actuators

RoHS



### Description

Littelfuse offers a wide range of magnetic actuators that are packaged in shapes similar to the relative mating sensors. We also offer a limited family of bare magnets with various grades of materials, including ferrite (ceramic), AlNiCo and neodymium iron boron (NdFeB) materials.

### Rectangular Actuators

These rectangular bare magnets and packaged actuators are ideally suited for mounting on a flat surface. They are suitable for use in a wide range of environments, including high-temperature applications.

Product Series	Description	Overall Dimensions		Material	Retentivity	Coercivity	Recommended Operating Temp.
		mm (inch)					°C
		L x W x H			Gauss	Oersted	Max.
H-31	AlNiCo Magnet	12.70 (0.500) x 1.60 (0.062) x 1.60 (0.062)		AlNiCo-5	10,900	620	450
H-32	AlNiCo Magnet	25.40 (1.000) x 4.80 (0.190) x 4.80 (0.190)		AlNiCo-5	10,900	620	450
H-33	AlNiCo Magnet	19.10 (0.750) x 3.20 (0.120) x 3.20 (0.120)		AlNiCo-5	10,900	620	450
H-34	AlNiCo Magnet	25.40 (1.000) x 6.35 (0.250) x 6.35 (0.250)		AlNiCo-5	10,900	620	450
H-40	Neodymium Magnet	7.62 (0.300) x 3.18 (0.125) x 3.18 (0.125)		NdFeB 45H	13,300	11,800	120
H-41	Neodymium Magnet	19.05 (0.750) x 3.18 (0.125) x 3.18 (0.125)		NdFeB 35H	11,700	10,800	120
H-58	Neodymium Magnet	21.00 (0.827) x 7.00 (0.276) x 4.70 (0.185)		NdFeB 35H	11,700	10,800	120
57105	Actuator for Terminal Flange Mount Sensor	40.17 (1.582) x 19.05 (0.750) x 6.35 (0.250)		AlNiCo-5	11,000	620	105
57125	Actuator for Pinned Flange Mount Sensor	28.57 (1.125) x 19.05 (0.750) x 6.35 (0.250)		AlNiCo-5	11,000	620	105
57135	Actuator for High-Temp Flange Mount Sensor	28.57 (1.125) x 19.05 (0.750) x 6.35 (0.250)		AlNiCo-5	12,800	640	150
57140	Actuator for Mini Flange Mount Sensor	23.00 (0.906) x 14.00 (0.551) x 6.00 (0.236)		AlNiCo-5	11,000	620	105
57141	Actuator for Mini Flange Mount Sensor	23.00 (0.906) x 14.00 (0.551) x 6.00 (0.236)		AlNiCo-5	11,000	620	105
57142	Actuator for Mini Flange Mount Sensor	23.00 (0.906) x 14.00 (0.551) x 6.00 (0.236)		NdFeB 35H	11,700	10,800	105
57145	Actuator for Flange Mount Sensor	28.57 (1.125) x 19.05 (0.750) x 6.35 (0.250)		AlNiCo-5	11,000	620	105
57150	Actuator for Flange Mount Sensor	28.57 (1.125) x 19.05 (0.750) x 6.35 (0.250)		AlNiCo-5	11,000	620	105
57045	Actuator for Mini PCB Mount Overmolded	17.78 (0.700) x 3.30 (0.130) x 4.32 (0.170)		AlNiCo-5	11,000	620	105
57050	Actuator for PCB Mount Overmolded	22.86 (0.900) x 4.57 (0.180) x 4.57 (0.180)		AlNiCo-5	11,000	620	105

### Cylindrical Actuators

Designed for mounting on a frame, these cylindrical bare magnets and packaged actuators are appropriate for use in a wide range of environments, including high-temperature applications.

Product Series	Description	Overall Dimensions		Material	Retentivity	Coercivity	Recommended Operating Temp.
		mm (inch)					°C
		Ø x L			Gauss	Oersted	Max.
H-35	Neodymium Magnet	6.35 (0.250) x 6.35 (0.250)		NdFeB 35H	11,700	10,800	120
H-48	Neodymium Magnet	4.40 (0.173) x 6.00 (0.236)		NdFeB 35SH	11,700	10,800	150
CM-1	Ceramic Magnet	12.70 (0.500) x 5.08 (0.200)		Ceramic-5	3,900	2,400	250
H-36	AlNiCo Magnet	4.60 (0.182) x 25.40 (1.000)		AlNiCo-5	12,800	640	450
H-315	AlNiCo Magnet	3.00 (0.118) x 15.00 (0.590)		AlNiCo-5	11,000	620	450
H-420	AlNiCo Magnet	4.00 (0.157) x 20.0 (0.787)		AlNiCo-5	11,000	620	450
H-625	AlNiCo Magnet	6.00 (0.236) x 25.0 (0.984)		AlNiCo-5	11,000	620	450
57020	Actuator for Mini Firecracker	5.10 (0.201) x 15.24 (0.600)		AlNiCo-5	11,000	620	105
57022	Actuator for Firecracker	5.80 (0.228) x 25.40 (1.000)		AlNiCo-5	11,000	620	105
57025	Actuator for Firecracker	6.22 (0.245) x 25.40 (1.000)		AlNiCo-5	11,000	620	105
57030	Actuator for Long Firecracker	6.22 (0.245) x 38.10 (1.500)		AlNiCo-5	11,000	620	105
57040	Actuator for Firecracker with Retaining Ribs	10.70 (0.420) x 31.00 (1.220)		NdFeB 35H	11,700	10,800	105
57060	Actuator for Stainless Steel Threaded Barrel Sensor	M8 x 1.25 Pitch x 36.00 (1.420)		AlNiCo-5	11,000	620	105
57065	Actuator for Threaded Barrel Sensor (Standard)	(5/16 x 24) Pitch x 38.10 (1.500)		AlNiCo-5	11,000	620	105
57070	Actuator for Threaded Barrel Sensor (Metric)	M8 x 1.25 Pitch x 38.10 (1.500)		AlNiCo-5	11,000	620	105
57075	Actuator for Heavy Duty Threaded Barrel Sensor	M12 x 1.00 Pitch x 46.00 (1.810)		Ceramic-2	2,900	2,400	105

## X-ON Electronics

Largest Supplier of Electrical and Electronic Components

*Click to view similar products for [Sensor Fixings & Accessories](#) category:*

*Click to view products by [Littelfuse](#) manufacturer:*

Other Similar products are found below :

[F03-01 SUS304 BINIL](#) [8000-5130](#) [FH-AP1](#) [PH-1-10M](#) [PH-1-20M](#) [PH-2-30M](#) [AC201](#) [R4](#) [ADI-LC3S](#) [EC18-WELL](#) [PBT420-100R](#) [PC-15015](#) [K35-4](#) [A-1923](#) [SS-12143](#) [STA12](#) [AP4-T](#) [PH-1-50M](#) [R6](#) [D01051301](#) [43912557-020](#) [MF-1 D=3.2](#) [BGN-035](#) [E39-L7](#) [ZX-SB11](#) [D01070602](#) [606072](#) [606075](#) [Y92ES12PVC4A10ML](#) [Y92ES12PVC4S5ML](#) [SA9Z-F11](#) [Z49-SF1](#) [ZFV-XMF2](#) [E4R-R12A-CS3M010](#) [28810-2](#) [ZX-SW11E V3](#) [CCS-PL-LDR2-70](#) [E4R-R12A-CS3M020](#) [BS-1T CHITAN](#) [F03-01 CHITAN](#) [CCS-PD2-1012](#) [ZX-SFW11E V3](#) [PH-2-90M](#) [PH-2-5M](#) [XMLZL008](#) [AC244](#) [28810-1](#) [PH-1-40M](#) [SS-12225](#) [32043-500](#)