

# Telecommunications Fuses

## L17T Series

170 V dc • Current-Limiting • 70–1200 A

REACH   CE 



### Description

The L17T series fuses are specifically designed for short-circuit protection of telecommunication systems. They are extremely current-limiting and offer reliable protection of sensitive DC power distribution systems. Constructed with silver-plated elements for low  $I^2t$  and peak let-through, these advanced fuses eliminate equipment damage due to surges and spikes. The L17T series fuse's unique element geometry provides cooler running temperatures, helping to minimize heat within enclosures.

### Features & Benefits

FEATURES	BENEFITS
<b>Extremely current-limiting</b>	Reduces damage caused by heating and magnetic effects of short-circuit currents
<b>Low operating temperature</b>	Minimizes heat damage
<b>Low <math>I^2t</math></b>	Better system protection
<b>POWR-GARD® technology</b>	Ensures quality overcurrent protection

### Applications

- Telecommunications DC power distribution systems

### Specifications

<b>Voltage Rating</b>	170 V dc
<b>Ampere Range</b>	70–1200 A
<b>Interrupting Ratings</b>	100 kA
<b>Applicable Standards</b>	UL 248-13

### Certification & Compliance

<b>UL</b>	UL Recognized (File: E71611)
<b>CSA</b>	CSA Certified (File: LR29862)
<b>CE</b>	Declaration of Conformity: L17T_230721_0
<b>RoHS</b>	RoHS 2 Directive 2011/65/EU; Directive (EU) 2015/863
<b>REACH</b>	REACH regulation (EC) 1907/2006

# Telecommunications Fuses

## L17T Series

### Accessories

LTFD 6001 series fuse holder  
LTFD 1200 series fuse holder

### Ordering Information

AMPERE	CATALOG NUMBER	PRODUCT MARKING	PACK QUANTITY	ORDERING NUMBER	UPC	FIGURE	AGENCY APPROVALS	
							UL	CSA
70	L17T070	L17T 70	10	L17T070.T	07945802756	1	•	•
90	L17T090	L17T 90	10	L17T090.T	07945806204	1	•	•
100	L17T100	L17T 100	10	L17T100.T	07945802757	1	•	•
125	L17T125	L17T 125	10	L17T125.T	07945802927	1	•	•
150	L17T150	L17T 150	10	L17T150.T	07945802758	1	•	•
175	L17T175	L17T 175	10	L17T175.T	07945806205	1	•	•
200	L17T200	L17T 200	10	L17T200.T	07945802760	1	•	•
225	L17T225	L17T 225	10	L17T225.T	07945802760	1	•	•
250	L17T250	L17T 250	10	L17T250.T	07945802761	1	•	•
300	L17T300	L17T 300	5	L17T300.V	07945802762	1	•	•
350	L17T350	L17T 350	5	L17T350.V	07945802763	1	•	•
400	L17T400	L17T 400	5	L17T400.V	07945802764	1	•	•
450	L17T450	L17T 450	5	L17T450.V	07945802765	1	•	•
500	L17T500	L17T 500	5	L17T500.V	07945802766	1	•	•
600	L17T600	L17T 600	5	L17T600.V	07945802767	1	•	•
800	L17T800	L17T 800	5	L17T800.V	07945803180	1	•	•
800	L17T800-1200	L17T800-1200	5	L17T800.V1200	07945835787	2	•	•
900	L17T900	L17T900	5	L17T900.V	07945806166	2	•	•
1000	L17T1000	L17T1000	5	L17T1000V	07945806167	2	•	•
1100	L17T1100	L17T1100	5	L17T1100V	07945806168	2	•	•
1200	L17T1200	L17T1200	5	L17T1200V	07945806078	2	•	•

# Telecommunications Fuses

## L17T Series

### Dimensions

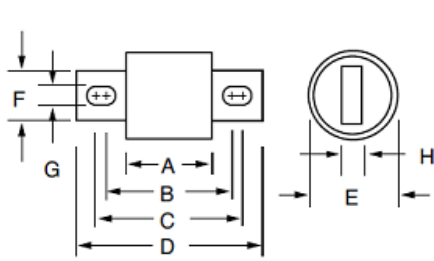


FIGURE 1

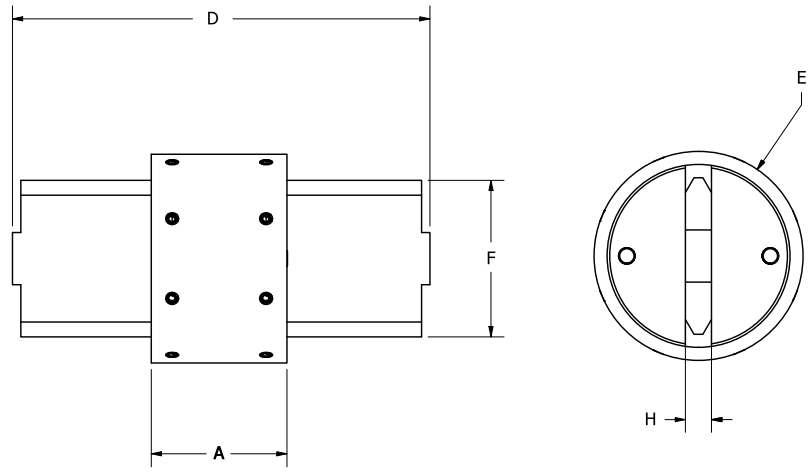


FIGURE 2

AMPS	FIGURE	DIMENSIONS INCHES (MM)							
		A	B	C	D	E	F	G	H
70–250	1	1 <sup>1</sup> / <sub>32</sub> (29.4)	1 <sup>1</sup> / <sub>8</sub> (47.6)	2 <sup>3</sup> / <sub>16</sub> (55.6)	2 <sup>2</sup> / <sub>32</sub> (67.5)	1 (25.4)	<sup>1</sup> / <sub>8</sub> (22.2)	0.327 (8.3)	<sup>3</sup> / <sub>16</sub> (4.8)
300–800	1	1 <sup>1</sup> / <sub>4</sub> (31.8)	1 <sup>15</sup> / <sub>16</sub> (49.2)	2 <sup>9</sup> / <sub>16</sub> (65.1)	3 <sup>1</sup> / <sub>2</sub> (88.9)	1 <sup>1</sup> / <sub>2</sub> (38.1)	1 (25.4)	1 <sup>3</sup> / <sub>32</sub> (10.3)	<sup>1</sup> / <sub>4</sub> (6.35)
800–1200	2	1 <sup>3</sup> / <sub>10</sub> (33.0)	—	—	4 (101.6)	2 (50.8)	1 <sup>1</sup> / <sub>2</sub> (38.1)	—	<sup>1</sup> / <sub>4</sub> (6.35)

**Disclaimer Notice** – Information furnished is believed to be accurate and reliable. However, users should independently evaluate the suitability of and test each product selected for their own applications. Littelfuse products are not designed for, and may not be used in, all applications. Read complete Disclaimer Notice at [www.littelfuse.com/product-disclaimer](http://www.littelfuse.com/product-disclaimer).

## X-ON Electronics

Largest Supplier of Electrical and Electronic Components

*Click to view similar products for [Specialty Fuses](#) category:*

*Click to view products by [Littelfuse](#) manufacturer:*

Other Similar products are found below :

[ECF-1](#) [ECF-1/2](#) [ECF-2](#) [ECF-3](#) [ECF-4](#) [170M1418](#) [N-2-1/2](#) [N-3-2/10](#) [S-2](#) [2D16](#) [170M1564D](#) [170M4241](#) [ABS-25](#) [ABS-30](#) [ABS-8](#) [FWP-25A14FI](#) [FWP-80A22FI](#) [30CIF06](#) [TJD](#) [TPL-BL](#) [KAB-25](#) [KLC40](#) [WKV](#) [10D27](#) [NITD25](#) [04450080FX850](#) [NITD16](#) [ECF-5](#) [TDC180-10](#) [TPM-25](#) [170M3509](#) [DEO200](#) [004117001](#) [45ET](#) [170M5810D](#) [10H07C](#) [SDL-2](#) [CC12M10A](#) [TDC600-2-R](#) [CBW57-ES-7A-5H](#) [CBW57-HB-15A-P](#) [CBW57-PS-15A-5X](#) [CBW58-HL4-30A-5C](#) [CBW58-HS-15A-5C](#) [CBW58-HS-20A-5C](#) [0AALBK300-BA](#) [170M8211](#) [STD2](#) [STD4](#) [4D27FB](#)