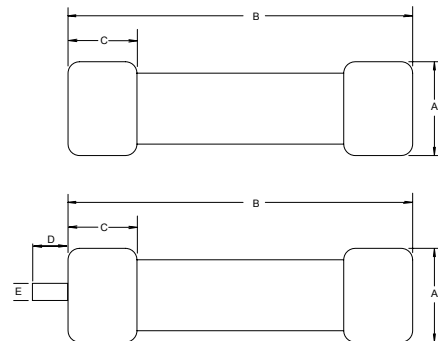
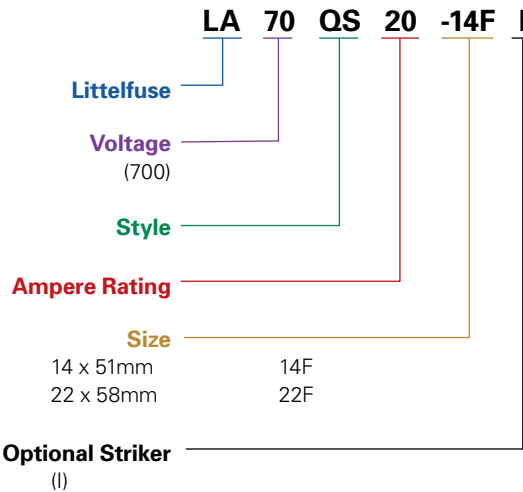


LA70QS French Cylindrical Fuses

690 Volts • Very Fast Acting • 10 – 100 Amperes



Ordering Information



Littelfuse French Cylindrical style semiconductor fuses are an extension to the LA70QS series. They offer a solid-fill design with high interrupting ratings and an optional striker for visual or remote blown fuse indication. The international 14x51mm and 22x58mm sizes are accepted worldwide.

Catalog Numbers & Technical Data

| Ampere Rating | Littelfuse Catalog Number (No Striker) | Littelfuse Catalog Number (With Striker) | Body Size | Maximum Clearing I ² t @700 VAC (A ² S x 10 ³) | Watts Loss @ Rated Current (W) |
|---------------|--|--|-----------|--|--------------------------------|
| 10 | LA70QS10-14F | LA70QS10-14FI | 14x51 | 0.04 | 3.5 |
| 12 | LA70QS12-14F | LA70QS12-14FI | 14x51 | 0.06 | 4.4 |
| 16 | LA70QS16-14F | LA70QS16-14FI | 14x51 | 0.10 | 4.8 |
| 20 | LA70QS20-14F | LA70QS20-14FI | 14x51 | 0.16 | 5.2 |
| 25 | LA70QS25-14F | LA70QS25-14FI | 14x51 | 0.27 | 5.8 |
| 32 | LA70QS32-14F | LA70QS32-14FI | 14x51 | 1.50 | 7.0 |
| 40 | LA70QS40-14F | LA70QS40-14FI | 14x51 | 0.70 | 10.7 |
| 50 | LA70QS50-14F | LA70QS50-14FI | 14x51 | 1.50 | 11.6 |
| 20 | LA70QS20-22F | LA70QS20-22FI | 22x58 | 0.076 | 8.0 |
| 25 | LA70QS25-22F | LA70QS25-22FI | 22x58 | 0.125 | 10.0 |
| 32 | LA70QS32-22F | LA70QS32-22FI | 22x58 | 0.27 | 11.0 |
| 40 | LA70QS40-22F | LA70QS40-22FI | 22x58 | 0.48 | 13.0 |
| 50 | LA70QS50-22F | LA70QS50-22FI | 22x58 | 0.80 | 14.9 |
| 63 | LA70QS63-22F | LA70QS63-22FI | 22x58 | 1.85 | 16.0 |
| 80 | LA70QS80-22F | LA70QS80-22FI | 22x58 | 3.80 | 17.8 |
| 100 | LA70QS100-22F | LA70QS100-22FI | 22x58 | 8.00 | 19.0 |

| Fuse Size | Dimensions in mm | | | | |
|----------------------|------------------|----|----|-----|-----|
| | A | B | C | D | E |
| 14x51 (no striker) | 14 | 51 | 14 | — | — |
| 22x58 (no striker) | 22 | 58 | 16 | — | — |
| 14x51 (with striker) | 14 | 51 | 14 | 7.5 | 3.8 |
| 22x58 (with striker) | 22 | 58 | 16 | 7.5 | 3.8 |

Dimensions for reference only.

Specifications

- Voltage Rating:** AC: 690 Volts, DC: 700 Volts
- Interrupting Rating:** AC: 200,000 Amperes, DC: 100,000 Amperes
- Ampere Range:** 10 – 100 Amperes
- Approvals:** UL Recognized under the components program, CSA Certified.

Recommended Fuse Blocks

CYH series for non-striker fuses LA70QS(amp)22F
LPSG series for the striker style LA70QS(amp)22FI

X-ON Electronics

Largest Supplier of Electrical and Electronic Components

Click to view similar products for [Specialty Fuses](#) category:

Click to view products by [Littelfuse](#) manufacturer:

Other Similar products are found below :

[63NZ02GL](#) [714125](#) [722134](#) [F02A-4AS](#) [F02B-1A](#) [80NH00GR-6](#) [FWH-200A](#) [FWP-32A14F](#) [12LCT](#) [12TDLSJ63](#) [REN-3](#) [15.5CAVH2E](#)
[ECF-1](#) [ECF-2](#) [ECF-3](#) [ECF-4](#) [170M0213](#) [170M1369-D](#) [170M3809D](#) [BK/F02B-1A](#) [N-2-1/2](#) [N-3-2/10](#) [NITD2](#) [20D16](#) [KAA-3](#) [KAB-30](#)
[KAW-3](#) [2D16](#) [LKN-125B](#) [16D27SB](#) [16FC](#) [170M1564D](#) [170M2616](#) [170M2668](#) [170M4161](#) [170M4241](#) [170M4699](#) [ESD63](#) [ABS-30](#) [ABS-8](#)
[ACF-15](#) [ACF-30](#) [ACO-30](#) [F02A-10A](#) [SSD10](#) [200NH1M](#) [FWP-25A14FI](#) [FWP-40A14FI](#) [FWP-500A](#) [FWP-63A22FI](#)