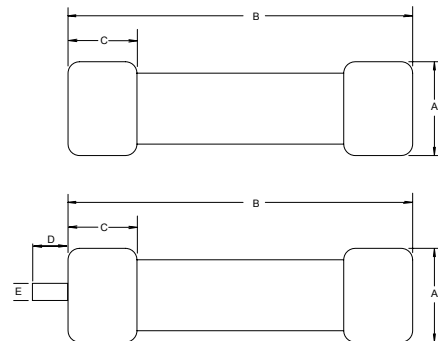
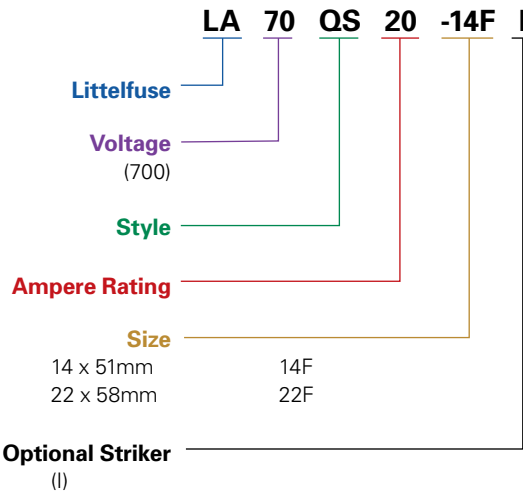


LA70QS French Cylindrical Fuses

690 Volts • Very Fast Acting • 10 – 100 Amperes



Ordering Information



Littelfuse French Cylindrical style semiconductor fuses are an extension to the LA70QS series. They offer a solid-fill design with high interrupting ratings and an optional striker for visual or remote blown fuse indication. The international 14x51mm and 22x58mm sizes are accepted worldwide.

Catalog Numbers & Technical Data

Ampere Rating	Littelfuse Catalog Number (No Striker)	Littelfuse Catalog Number (With Striker)	Body Size	Maximum Clearing I ² t @700 VAC (A ² S x 10 ³)	Watts Loss @ Rated Current (W)
10	LA70QS10-14F	LA70QS10-14FI	14x51	0.04	3.5
12	LA70QS12-14F	LA70QS12-14FI	14x51	0.06	4.4
16	LA70QS16-14F	LA70QS16-14FI	14x51	0.10	4.8
20	LA70QS20-14F	LA70QS20-14FI	14x51	0.16	5.2
25	LA70QS25-14F	LA70QS25-14FI	14x51	0.27	5.8
32	LA70QS32-14F	LA70QS32-14FI	14x51	1.50	7.0
40	LA70QS40-14F	LA70QS40-14FI	14x51	0.70	10.7
50	LA70QS50-14F	LA70QS50-14FI	14x51	1.50	11.6
20	LA70QS20-22F	LA70QS20-22FI	22x58	0.076	8.0
25	LA70QS25-22F	LA70QS25-22FI	22x58	0.125	10.0
32	LA70QS32-22F	LA70QS32-22FI	22x58	0.27	11.0
40	LA70QS40-22F	LA70QS40-22FI	22x58	0.48	13.0
50	LA70QS50-22F	LA70QS50-22FI	22x58	0.80	14.9
63	LA70QS63-22F	LA70QS63-22FI	22x58	1.85	16.0
80	LA70QS80-22F	LA70QS80-22FI	22x58	3.80	17.8
100	LA70QS100-22F	LA70QS100-22FI	22x58	8.00	19.0

Fuse Size	Dimensions in mm				
	A	B	C	D	E
14x51 (no striker)	14	51	14	—	—
22x58 (no striker)	22	58	16	—	—
14x51 (with striker)	14	51	14	7.5	3.8
22x58 (with striker)	22	58	16	7.5	3.8

Dimensions for reference only.

Specifications

- Voltage Rating:** AC: 690 Volts, DC: 700 Volts
- Interrupting Rating:** AC: 200,000 Amperes, DC: 100,000 Amperes
- Ampere Range:** 10 – 100 Amperes
- Approvals:** UL Recognized under the components program, CSA Certified.

Recommended Fuse Blocks

CYH series for non-striker fuses LA70QS(amp)22F
LPSG series for the striker style LA70QS(amp)22FI

X-ON Electronics

Largest Supplier of Electrical and Electronic Components

Click to view similar products for [Specialty Fuses](#) category:

Click to view products by [Littelfuse](#) manufacturer:

Other Similar products are found below :

[ECF-1](#) [ECF-1/2](#) [ECF-2](#) [ECF-3](#) [ECF-4](#) [170M1418](#) [N-2-1/2](#) [N-3-2/10](#) [S-2](#) [2D16](#) [170M1564D](#) [170M4241](#) [ABS-25](#) [ABS-30](#) [ABS-8](#) [FWP-25A14FI](#) [FWP-80A22FI](#) [30CIF06](#) [TJD](#) [TPL-BL](#) [KAB-25](#) [KLC40](#) [WKV](#) [10D27](#) [NITD25](#) [04450080FX850](#) [NITD16](#) [ECF-5](#) [TDC180-10](#) [TPM-25](#) [170M3509](#) [DEO200](#) [004117001](#) [45ET](#) [170M5810D](#) [10H07C](#) [SDL-2](#) [CC12M10A](#) [TDC600-2-R](#) [CBW57-ES-7A-5H](#) [CBW57-HB-15A-P](#) [CBW57-PS-15A-5X](#) [CBW58-HL4-30A-5C](#) [CBW58-HS-15A-5C](#) [CBW58-HS-20A-5C](#) [0AALBK300-BA](#) [170M8211](#) [STD2](#) [STD4](#) [4D27FB](#)