

Dead Front Fuse Holders

LFPSC Series

600 V • Class CC



Description

The LFPSC POWR-SAFE series dead front fuse holders feature the IP20 touch-safe design for maximum protection to personnel. These fuse holders are intended to house Class CC 10 x 38 midget-style fuses. They are available in 1-, 2-, 3-, and 4-pole configurations and are offered in indicating and non-indicating options. The LFPSC series is DIN-rail mountable and easily installed and removed with no additional fuse pullers or tools. These high SCCR-rated fuse holders have a large clamping range with dual-wire-rated terminals.

Features & Benefits

FEATURES	BENEFITS
Meets dead front requirements	Maximum safety for personnel
35 mm DIN-rail mountable	Easy installation in various settings
Compact design	Ultimate flexibility, space-saving
Easy removal	No fuse pullers or additional tools required
Dual LED indication	Distinguishes polarity in dc applications

Applications

- For use with Class CC (10 x 38 mm) fuses

Specifications

Voltage Rating	600 V ac/dc
Ampere Rating	30 A
SCCR Rating	200 kA
Power Acceptance	3W Maximum
Indication Voltage Range	110–600 V ac/dc
Terminal Type	Pressure Plate
Material	Thermoplastic
Flammability Rating	UL94 V-0, self-extinguishing
Environmental	RoHS compliant, Lead (Pb) free

Dead Front Fuse Holders

LFPSC Series

Certification & Compliance

UL	UL Listed (File: E14721)
CSA	CSA File: 256018
CE	EU Declaration of Conformity EU_DOC-LFPSC_200929
RoHS	RoHS 2 Directive 2011/65/EU; Directive (EU) 2015/863

Accessories

Class CC fuses
Multi-Pole Assembly Kit

Ordering Information

VOLTAGE	AMPERE	SCCR RATING	POLES	FUSE TYPE	SERIES	NON-INDICATING		INDICATING		PACK QUANTITY
						CATALOG NUMBER	ORDERING NUMBER	CATALOG NUMBER	ORDERING NUMBER	
600 V ac/dc	30 A	200 kA	1	Class CC	LFPSC	LFPSC001	LFPSC0001Z	LFPSC001ID	LFPSC0001ZXID	12
			2		LFPSC	LFPSC002	LFPSC0002Z	LFPSC002ID	LFPSC0002ZXID	6
			3		LFPSC	LFPSC003	LFPSC0003Z	LFPSC003ID	LFPSC0003ZXID	4
			4		LFPSC	LFPSC004	LFPSC0004Z	LFPSC004ID	LFPSC0004ZXID	3

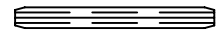
Multi-Pole Assembly Kit Ordering No. CYHP0001Z-KIT
(Kit contains 20 connector pincers & 10 handle pins)

Multi-Pole Assembly Kits

POLES	PINCER QTY.	PIN QTY.	ASSEMBLY SETS	ORDERING NUMBER
2	30	10	10 pack	LFPHV2PAK
3	60	20	10 pack	LFPHV3PAK



Connector Pincer



Handle Pin

Terminal Information

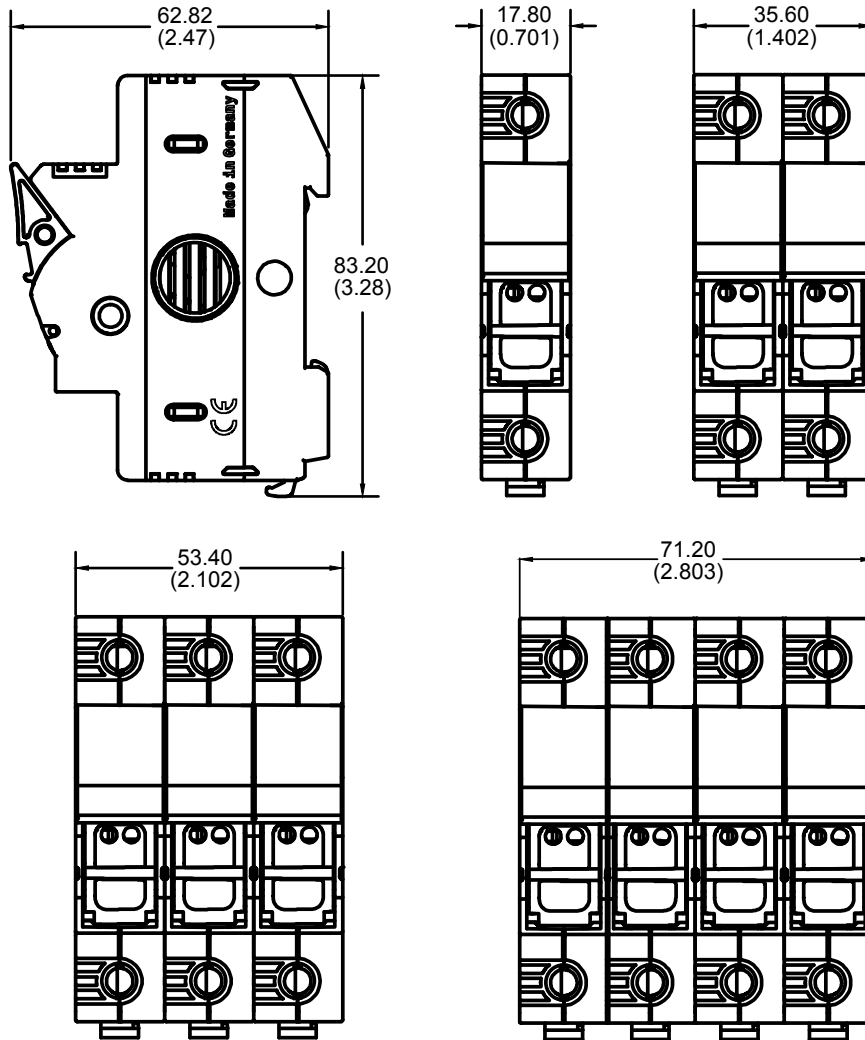
TERMINAL TYPE	WIRE TYPE		NUMBER OF WIRES	WIRE SIZE	TORQUE
Pressure Plate	75° Max CU Only	Stranded	1	18–8 AWG (.75–25 mm ²)	18–22 lb-in (2–2.5 N-m)
			1	6–4 AWG	22–26 lb-in
			2†	18–6 AWG (.75–10 mm ²)	18–22 lb-in (2–2.5 N-m)

† Must be the same cross-sectioned size

Dead Front Fuse Holders

LFPSC Series

Dimensions Millimeters (inches)



Disclaimer Notice – Information furnished is believed to be accurate and reliable. However, users should independently evaluate the suitability of and test each product selected for their own applications. Littelfuse products are not designed for, and may not be used in, all applications. Read complete Disclaimer Notice at www.littelfuse.com/product-disclaimer.

X-ON Electronics

Largest Supplier of Electrical and Electronic Components

Click to view similar products for [Fuse Kits & Assortments](#) category:

Click to view products by [Littelfuse](#) manufacturer:

Other Similar products are found below :

[12052472](#) [194-044-9-001](#) [FUSE-2A/600VBLSTR](#) [00950000XXN](#) [SF-LAB1](#) [203411](#) [00940551Z](#) [00940367ZP](#) [ERK-28J](#) [00940553Z](#)
[00940419ZP](#) [CFBAR1-250BP](#) [32BS](#) [3004000](#) [521.800](#) [522.800](#) [632.830](#) [GSK-260](#) [ORBOX006Z](#) [12146815](#) [SF-SP-LAB1](#) [FUSE-](#)
[11A/1000V](#) [B1](#) [0695020.L](#) [0AGC0001ZPGLO](#) [00940558ZPA](#) [632.800](#) [812404](#) [12160438](#) [12160541](#) [SF-KIT-AUTO-1](#) [SF-KIT-AUTO-2](#)
[SF-KIT-HC-1](#) [SF-KIT-HV-1](#) [12004943](#) [12010105](#) [12160504](#) [BK/ATC-TAP](#) [BK/ATM-TAP](#) [BP/ATM-TAP-RP](#) [CDY10TRY-ATM-LP](#)
[CDY10TRY-FLNK2](#) [CDY10TRY-MAX](#) [CDY5TRY-BMOUNT](#) [CDY5TRY-FMX](#) [CDY5TRY-SMOUNT](#) [FUSE-ACC-KIT](#) [FUSE-CADDY1](#)
[FUSE-CADDY2](#) [NO270](#) [203403](#)