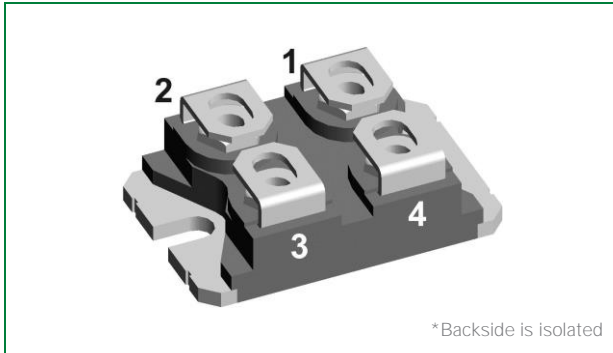
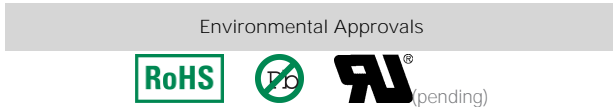


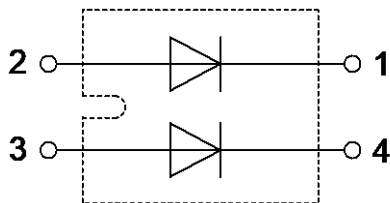
LSIC2SD120N80PA  
1200 V, 2x40 A SiC Schottky Barrier Diode



Agency Approvals and Environmental



Pinout Diagram



\*Backside is isolated

Product Summary

Characteristic	Value	Unit
$V_{RRM}$	1200	V
$I_F (T_C \le 125 \text{ }^\circ\text{C})$	2x40	A
$Q_C (V_R: 0-800 \text{ V})$	240*	nC

\*per leg

Features

- Positive temperature coefficient for safe operation and ease of paralleling
- 175 °C maximum operating junction temperature
- Excellent surge capability
- Extremely fast, temperature-independent switching behavior
- Dramatically reduced switching losses compared to Si bipolar diodes
- Zero reverse recovery current
- Copper base plate with AlN isolation for low thermal resistance
- Isolation voltage: 3000 V
- UL Recognition Pending under File E72873

Applications

- Boost diodes in PFC or DC/DC stages
- Switch-mode power supplies
- Solar inverters
- Uninterruptable power supplies
- Industrial motor drives
- Battery Chargers
- High speed rectifier

1. Maximum Ratings ..... 3

2. Package Specifications ..... 3

3. Thermal Characteristics ..... 3

4. Electrical Characteristics ..... 3

5. Performance Curves ..... 4

6.  $V_F$  Model for Simulation ..... 5

7. Package Dimensions ..... 6

8. Part Numbering and Marking ..... 6

9. Packing Options ..... 6

10. Packing Specifications ..... 7

### 1. Maximum Ratings

Characteristic	Symbol	Conditions	Value	Unit
Repetitive Peak Reverse Voltage	$V_{RRM}$	-	1200	V
DC Blocking Voltage	$V_R$	-	1200	V
Continuous Forward Current (Per Leg / Component)	$I_F$	$T_C = 25\text{ }^\circ\text{C}$	75 / 150	A
		$T_C = 100\text{ }^\circ\text{C}$	50 / 100	
		$T_C = 125\text{ }^\circ\text{C}$	40 / 80	
Non-repetitive Forward Surge Current (Per Leg)	$I_{FSM}$	$T_C = 25\text{ }^\circ\text{C}$ , $t_p = 10\text{ ms}$ , Half sine pulse	300	A
$I^2t$ (Per Leg)	$\int I^2 dt$	$T_C = 25\text{ }^\circ\text{C}$ , $t_p = 10\text{ ms}$ , Half sine pulse	450	A <sup>2</sup> s
Power Dissipation (Per Leg / Component)	$P_{Tot}$	$T_C = 25\text{ }^\circ\text{C}$	258 / 516	W
		$T_C = 110\text{ }^\circ\text{C}$	112 / 224	
Operating Junction Temperature	$T_J$	-	-55 to 175	$^\circ\text{C}$
Storage Temperature	$T_{STG}$	-	-55 to 150	$^\circ\text{C}$

Note: All ratings are per leg unless otherwise specified

### 2. Package Specifications

Characteristic	Symbol	Conditions	Value			Unit
			Min	Typ	Max	
Mounting Torque	$M_D$	Screws to heatsink	-	-	1.5	Nm
		Terminal connection screws	-	-	1.3	
Creepage Distance on Surface	$d_{Spp}$	Terminal to terminal	10.5	-	-	mm
	$d_{Spb}$	Terminal to backside	8.5	-	-	
Striking Distance Through Air	$d_{App}$	Terminal to terminal	3.2	-	-	mm
	$d_{Apb}$	Terminal to backside	6.8	-	-	
Isolation Voltage	$V_{ISOL}$	50 / 60 Hz - RMS, $I_{ISOL} \leq 1\text{ mA}$ , $t = 1\text{ sec.}$	-	-	3000	V
		50 / 60 Hz - RMS, $I_{ISOL} \leq 1\text{ mA}$ , $t = 1\text{ min.}$	-	-	2500	
Weight	-	-	-	30	-	g

### 3. Thermal Characteristics

Characteristic	Symbol	Value	Unit
Maximum Thermal Resistance (Per Leg / Component)	$R_{th,Jc,MAX}$	0.58 / 0.29	$^\circ\text{C/W}$

Note: All ratings are per leg unless otherwise specified

### 4. Electrical Characteristics

Characteristic	Symbol	Conditions	Value			Unit
			Min	Typ	Max	
Forward Voltage	$V_F$	$I_F = 40\text{ A}$ , $T_J = 25\text{ }^\circ\text{C}$	-	1.5	1.8	V
		$I_F = 40\text{ A}$ , $T_J = 175\text{ }^\circ\text{C}$	-	2.1	-	
Reverse Current	$I_R$	$V_R = 1200\text{ V}$ , $T_J = 25\text{ }^\circ\text{C}$	-	<1	100	$\mu\text{A}$
		$V_R = 1200\text{ V}$ , $T_J = 175\text{ }^\circ\text{C}$	-	10	-	
Total Capacitance	C	$V_R = 1\text{ V}$ , $f = 1\text{ MHz}$	-	2850	-	pF
		$V_R = 400\text{ V}$ , $f = 1\text{ MHz}$	-	230	-	
		$V_R = 800\text{ V}$ , $f = 1\text{ MHz}$	-	165	-	
Total Capacitive Charge	$Q_C$	$V_R = 800\text{ V}$ , $Q_C = \int Q(V) dV$	-	240	-	nC
Capacitive Stored Energy	$E_C$	$V_R = 800\text{ V}$	-	53	-	$\mu\text{J}$

Note: All ratings are per leg unless otherwise specified;  $T_J = 25\text{ }^\circ\text{C}$  unless otherwise specified

### 5. Performance Curves

Note: All figures show per leg measurements unless otherwise specified

Figure 1. Typical Forward Characteristics

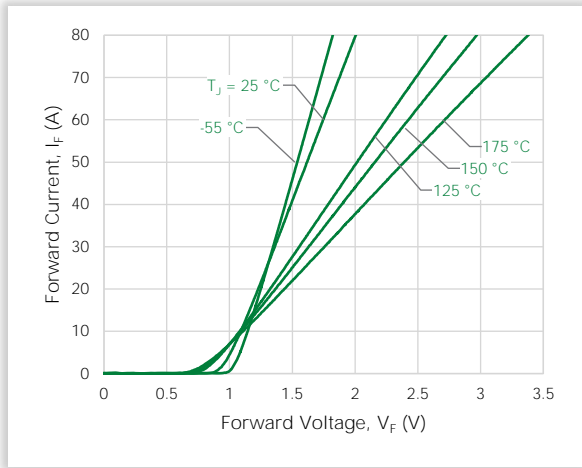


Figure 2. Typical Reverse Characteristics

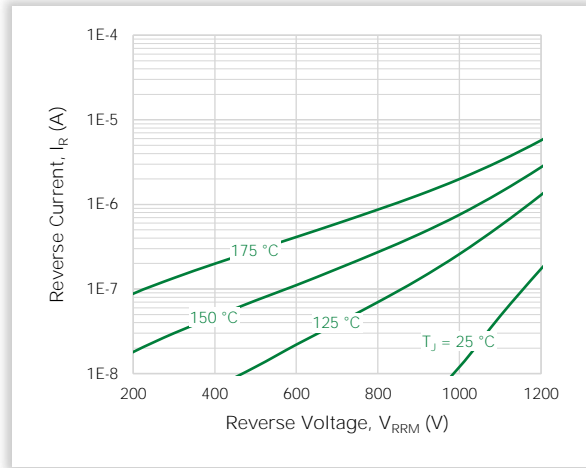


Figure 3. Power Derating

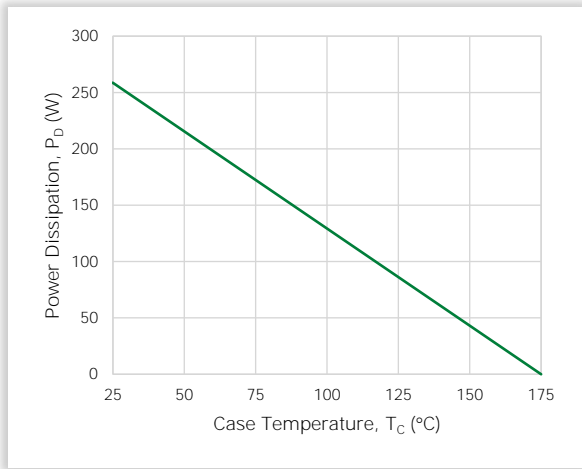


Figure 4. Current Derating

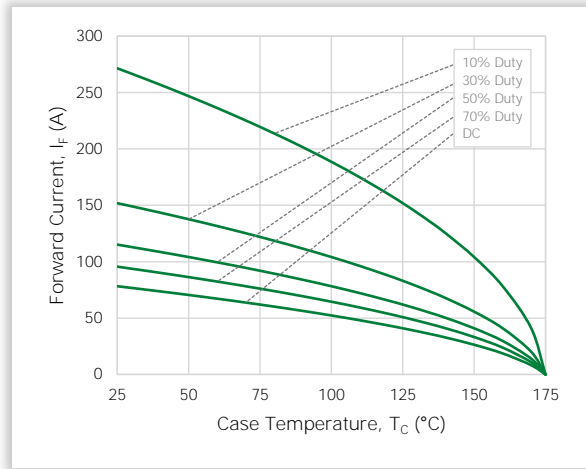


Figure 5. Capacitance vs. Reverse Voltage

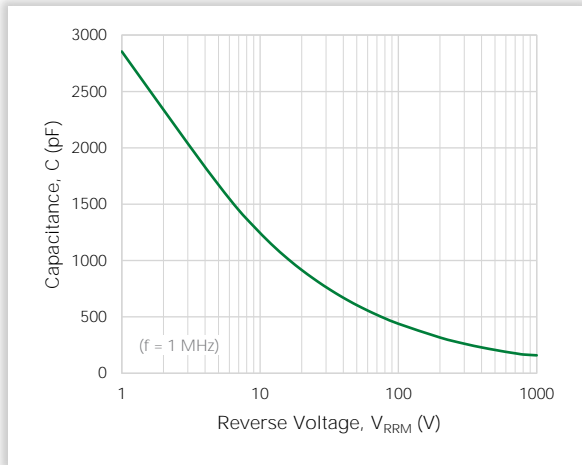


Figure 6. Capacitive Charge vs. Reverse Voltage

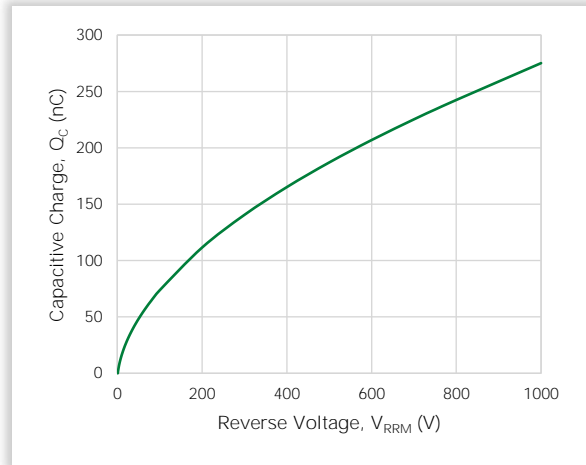


Figure 7. Stored Energy vs. Reverse Voltage

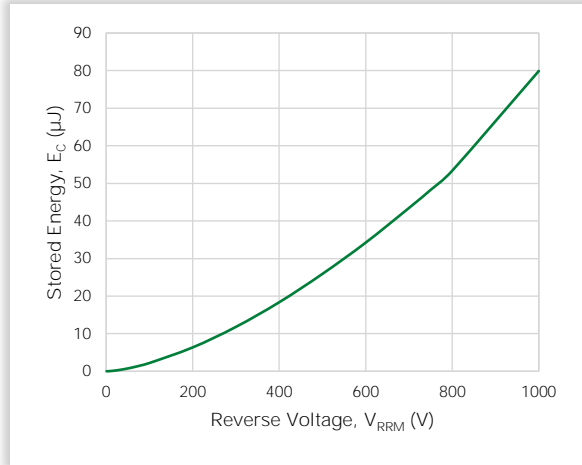
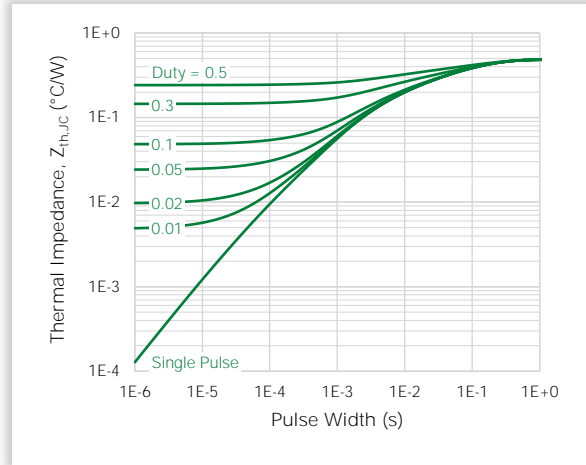
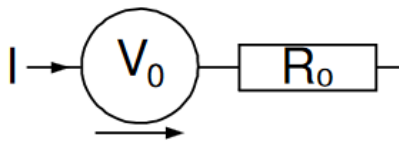


Figure 8. Transient Thermal Impedance



### 6. $V_F$ Model for Simulation



$$V_F(T_j) = V_0 + IR_0$$

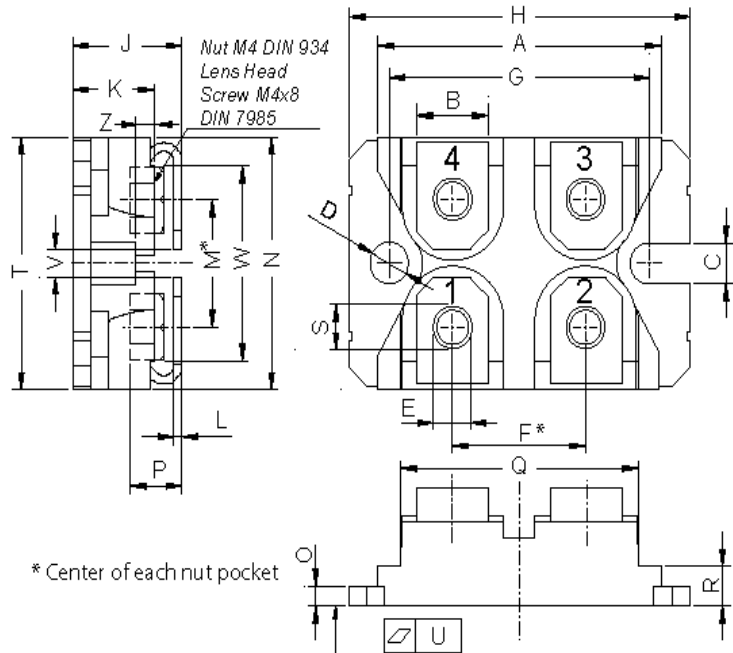
$$V_0 = -1.18 \times 10^{-3} \cdot T_j + 1.00 \times 10^0$$

$$R_0 = 5.30 \times 10^{-7} \cdot T_j^2 + 2.05 \times 10^{-5} \cdot T_j + 1.21 \times 10^{-2}$$

Notes:

- $T_j$  is junction temperature in  $^{\circ}$ C
- Range valid from 25  $^{\circ}$ C to 175  $^{\circ}$ C
- Model represents performance of a typical part (per leg)

### 7. Package Dimensions



Symbol	Millimeters		
	Min	Nom	Max
A	31.50	-	31.88
B	7.80	-	8.20
C	4.09	-	4.29
D	4.09	-	4.29
E	4.09	-	4.29
F	14.91	-	15.11
G	30.12	-	30.30
H	37.80	-	38.26
J	11.68	-	12.22
K	8.92	-	9.60
L	0.74	-	0.84
M	12.50	-	13.10
N	25.15	-	25.42
O	1.95	-	2.13
P	4.95	-	6.20
Q	26.54	-	26.90
R	3.94	-	4.42
S	4.55	-	4.85
T	24.59	-	25.25
U	-0.05	-	0.10
V	3.20	-	5.50
W	19.81	-	21.08
Z	2.50	-	2.70

### 8. Part Numbering and Marking

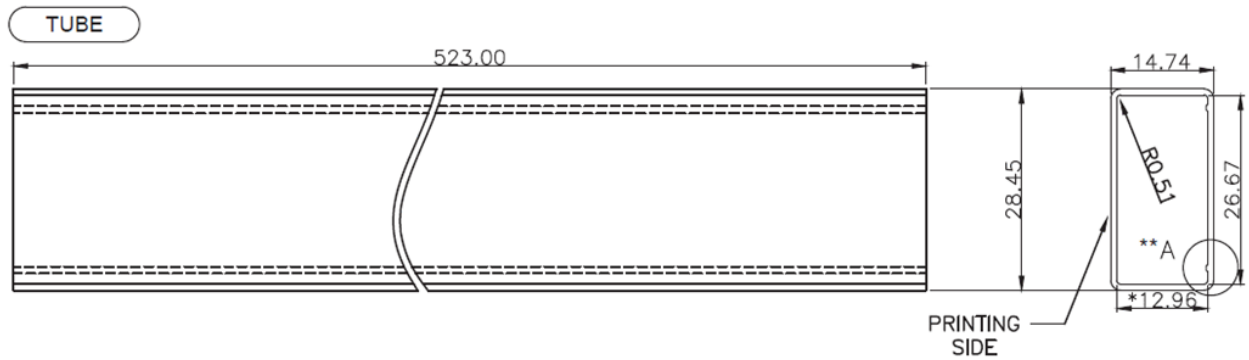


- SIC = SiC
- 2 = Gen 2
- SD = Schottky Barrier Diode
- 120 = Voltage Rating (1200 V)
- N = Package (SOT-227B - miniBLOC)
- 80 = Current Rating (80 A)
- PA = Parallel Configuration
- YY = Year
- WW = Week
- D = Special Code
- ZZZZZ-ZZ = Lot Number

### 9. Packing Options

Part Number	Marking	Packing Mode	M.O.Q.
LSIC2SD120N80PA	SIC2SD120N80PA	Tube (10 pcs)	10

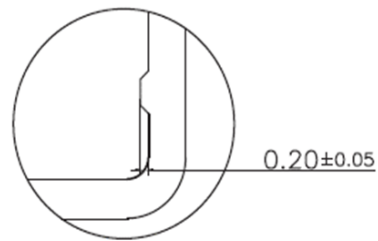
10. Packing Specifications



Note:

1. MATERIAL : CLEAR PVC WITH ANTISTATIC COATING.
2. MATERIAL THICKNESS : 0.89±0.13mm
3. COLOR : TRANSPARENCY, RED
4. PRINTING : ALL GREEN COLOR, ARIAL STYLE
5. TUBE SURFACE RESISTANCE : 106 ~ 1010 Ω/square
6. ESD (Electro Static Discharge) : less than 100V, 6Months

\*\* Detail A



SCALE 5:1

For additional information please visit [www.Littelfuse.com/powersemi](http://www.Littelfuse.com/powersemi)

Disclaimer Notice - Littelfuse products are not designed for, and shall not be used for, any purpose (including, without limitation, automotive, military, aerospace, medical, life-saving, life-sustaining or nuclear facility applications, devices intended for surgical implant into the body, or any other application in which the failure or lack of desired operation of the product may result in personal injury, death, or property damage) other than those expressly forth in applicable Littelfuse product documentation. Littelfuse shall not be liable for any claims or damages arising out of products used in applications not expressly intended by Littelfuse as set forth in applicable Littelfuse documentation.

Read complete Disclaimer Notice at [www.littelfuse.com/disclaimer-electronics](http://www.littelfuse.com/disclaimer-electronics)

## X-ON Electronics

Largest Supplier of Electrical and Electronic Components

*Click to view similar products for [Schottky Diodes & Rectifiers](#) category:*

*Click to view products by [Littelfuse](#) manufacturer:*

Other Similar products are found below :

[MA4E2039](#) [D1FH3-5063](#) [MBR0530L-TP](#) [MBR10100CT-BP](#) [MBR1545CT](#) [MMBD301M3T5G](#) [RB160M-50TR](#) [RB551V-30](#)  
[BAS16E6433HTMA1](#) [BAT 54-02LRH E6327](#) [NSR05F40QNXT5G](#) [NTE555](#) [JANS1N6640](#) [SB07-03C-TB-H](#) [SB1003M3-TL-W](#) [SK310-T](#)  
[SK32A-LTP](#) [SK34B-TP](#) [SS3003CH-TL-E](#) [GA01SHT18](#) [CRS10I30A\(TE85L,QM](#) [MA4E2501L-1290](#) [MBRB30H30CT-1G](#) [SB007-03C-TB-](#)  
[E](#) [SK32A-TP](#) [SK33B-TP](#) [SK38B-TP](#) [NRVBM120LT1G](#) [NTE505](#) [NTSB30U100CT-1G](#) [SS15E-TP](#) [VS-6CWQ10FNHM3](#) [ACDBA1100LR-](#)  
[HF](#) [ACDBA1200-HF](#) [ACDBA140-HF](#) [ACDBA2100-HF](#) [ACDBA3100-HF](#) [CDBQC0530L-HF](#) [CDBQC0240LR-HF](#) [ACDBA260LR-HF](#)  
[ACDBA1100-HF](#) [SK310B-TP](#) [MA4E2502L-1246](#) [MA4E2502H-1246](#) [NRVBM120ET1G](#) [NSR01L30MXT5G](#) [NTE573](#) [NTE6081](#) [SB560](#)  
[PMAD1108-LF](#)