

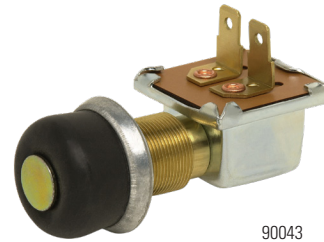
LIGHT DUTY MOMENTARY PUSH BUTTON SWITCHES



90002-01



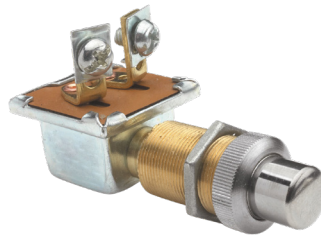
90043-07



90043



9023



9044

Specifications

Housing:

Base: Rectangular Plated Steel

Facenut: Chrome Plated

Circuitries Available:

Normally Off (Circuit only closing with actuator depressed, with spring return to 'Off')

Normally On (Circuit opens when actuator is depressed, with spring return to 'On')

Rating:

10A @ 12V DC, except when noted

Contacts:

Silver

Description

Littelfuse Light Duty Momentary Push Button Switches are weather and dust resistant. These push button switches have a gasket-sealed case and an O-Ring in stem for resistance to harsh environments. Products utilize silver contacts for corrosion resistance in applications up to 36V DC.

Ordering Information

Web Resources

Download installation instructions, 2D prints and technical resources at: littelfuse.com/LightDutyPushButtonSwitches

PART NUMBER	DESCRIPTION	TYPE	MOUNTING STEM	TERMINALS
9023 *	15A resistive, 10A inductive at 12V DC, 8A resistive, 5A inductive at 24V DC	SPST Normally Off	5/8"-32 7/8" L (22.1mm)	2 Screws
9023-09 Obsolete:1/11/18	15A resistive, 10A inductive at 12V DC; 8A resistive, 5A inductive at 24V DC; Screw-on black rubber cap 83280-03	SPST Normally Off	5/8"-32 7/8" L (22.1mm)	2 Screws
9044 *	Brass Button Starter Switch	SPST Normally Off	5/8"-32 1/16" L (26.9mm)	2 Screws
9115 *	Brass Button Starter Switch	SPST Normally On	5/8"-32 7/8" L (22.1mm)	2 Screws
9238 *	15A resistive, 10A inductive at 12V DC, 8A resistive, 5A inductive at 24V DC	SPST Normally Off	5/8"-32 7/8" L (22.1mm)	2 Blades
9238-01	15A resistive, 10A inductive at 12V DC; 8A resistive, 5A inductive at 24V DC; Screw-on black rubber cap 83280-03	SPST Normally Off	5/8"-32 7/8" L (22.1mm)	2 Blades
90002-01	Weather-resistant and dust-resistant, Brass Button Starter Switch and O-ring in stem	SPST Normally On	5/8"-32 1 1/16" L (26.9mm)	2 Screws
90043 *	Steel plunger protrudes through the snap-on black rubber cap, Designed to mate with Aptiv #2977647, Rated to 10A at 24V DC	SPST Normally On	5/8"-32 5/8" L (15.9mm)	2 Blades
90043-07 *	PVC-Coated variant of 90043 family, Features an extended stem with terminating contacts rated to 15A at 12V DC	SPST Normally On	5/8"-32 5/8" L (15.9mm)	2 7" Wire Leads
91126 *	PVC-Coated, Steel button 0.38" (9.7mm) diameter	SPST Normally On	7/16"-20 11/25" L (11.2mm)	2 7" Wire Leads
91126-07	PVC-Coated Momentary Push Button Switch	SPST Normally On	7/16"-20 11/25" L (11.2mm)	2 7" Wire Leads Aptiv #12047662

* Box Available

X-ON Electronics

Largest Supplier of Electrical and Electronic Components

Click to view similar products for [Pushbutton Switches](#) category:

Click to view products by [Littelfuse](#) manufacturer:

Other Similar products are found below :

[8940K2012](#) [LW1L-M1C10V-A](#) [LW1L-M1C70-A](#) [LW2L-A1C20M-GD](#) [LW2L-M1C20M-A](#) [60324L](#) [M22-D-R-GB0/K11](#) [M7E-HRN2](#)
[67021K512](#) [67081K512X](#) [701PB580](#) [7190K101](#) [7199K101](#) [810K12910](#) [810KSV30B](#) [MML21EA2ADK](#) [MML21KA3ABK](#)
[MML23KA3AC05K-001](#) [MML23KW3AA01W](#) [8418K2](#) [8442K3](#) [8450K1](#) [860K11911T01A](#) [861901](#) [861K11911T01A07](#)
[861K13810T00A14](#) [861K13911](#) [8646AB6X718UL](#) [8646ABUL](#) [9001KXRK](#) [907AYY100](#) [PMHD155A1](#) [95-313.000](#)
[9533CD4+U574+U4922](#) [95-414.000](#) [99-450.837](#) [99-453.837](#) [PV3H2B0NN-341](#) [1203MRA](#) [A22NZBGANGA](#) [A22NZBMMNGA](#)
[A22NZBNANGA](#) [A22NZMPATRA](#) [A2PMA1X03EC56](#) [A3A-5123-02](#) [A3A-7140](#) [A3A-7310](#) [A3A-7340](#) [A3U-TMW-A2C-5M](#) [A595](#)