

**LOADSLAMMER**  
TRUST AND VERIFY

# LSP1000 PRO Product Overview



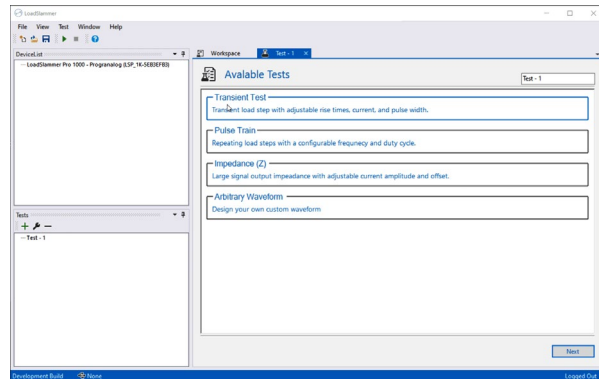
**Next Generation Transient Load Test Tool**

[www.loadslammer.com](http://www.loadslammer.com)

## Application Uses

- DC-DC Point of Load Transient Testing
- Multi Phase Testing
- Large Signal Stability Analysis
- Motherboard Verification
- DC-DC Firmware Validation
- CPU, GPU, TPU, FPGA
- Datacenter, Telecom, Storage, Servers, Video Routers

## Comprehensive Features - Easy to Use

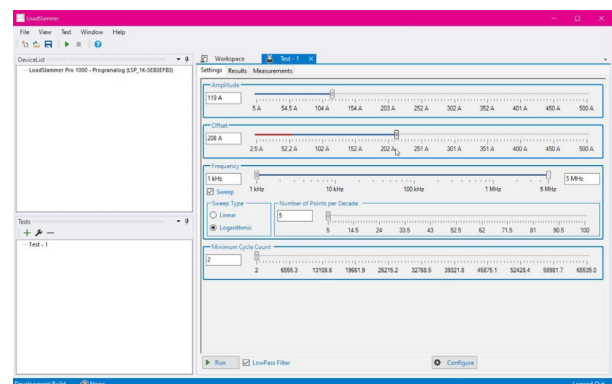


## Software Options

- Auto Phase Stress Testing
- Large Signal Impedance Analysis up to 5MHz
- Real Time Oscilloscope

## Key Features

- 500A DC Pulse Loading, 1A steps
- 1000A/us Slew Rate
- Programmable Slew Rate
- Scalable, add up to 10 in parallel
- Arbitrary Impedance Waveform Generator
- Integrated 4D testing, frequency, duty cycle, current
- Vendor Specific Test Suites
- Interposer and Adaptor compatible
- Expansion Port for additional functionality



Connector Information

[www.loadslammer.com/connectors](http://www.loadslammer.com/connectors)

Contact/ Order Information

[www.loadslammer.com](http://www.loadslammer.com)

503-967-9997

## X-ON Electronics

Largest Supplier of Electrical and Electronic Components

*Click to view similar products for [Test Accessories - Other](#) category:*

*Click to view products by [LoadSlammer](#) manufacturer:*

Other Similar products are found below :

[AO1026](#) [AO1035](#) [AO1051](#) [AO1059](#) [149116](#) [149118](#) [RS40](#) [RS41](#) [AO1030](#) [AO1032](#) [AO1036](#) [AO1058](#) [4742](#) [KTS288540](#) [11-32-2733](#)  
[00415](#) [00163](#) [PACC-ZD005](#) [PACC-ZD007](#) [700M20TH](#) [628824000](#) [MPT-VF](#) [B3](#) [15010A0A0100M0](#) [B3](#) [15050A0D01A2M0](#) [B3](#)  
[1505A00A01A1M0](#) [B3](#) [15060A0D0100M0](#) [98-CAL020](#) [MO-SCREEN](#) [68-020-01P](#) [CVRF02](#) [CPAK8](#) [RT-ZA19](#) [LCR-OPT-02](#) [1-1437358-1](#)  
[4408](#) [POMONA](#) [DME D110 T1](#) [LMLH 50](#) [FLUKE PM9082/001](#) [85392-12](#) [ST18/SMAM/SMAM/72](#) [HO720](#) [45025](#) [45028](#) [CT2300](#) [CC545](#)  
[VT-1000](#) [CT3041](#) [VS-AVT-CABLE-08](#) [6172A](#) [68-023-01](#)