

**ROTARY SWITCH**



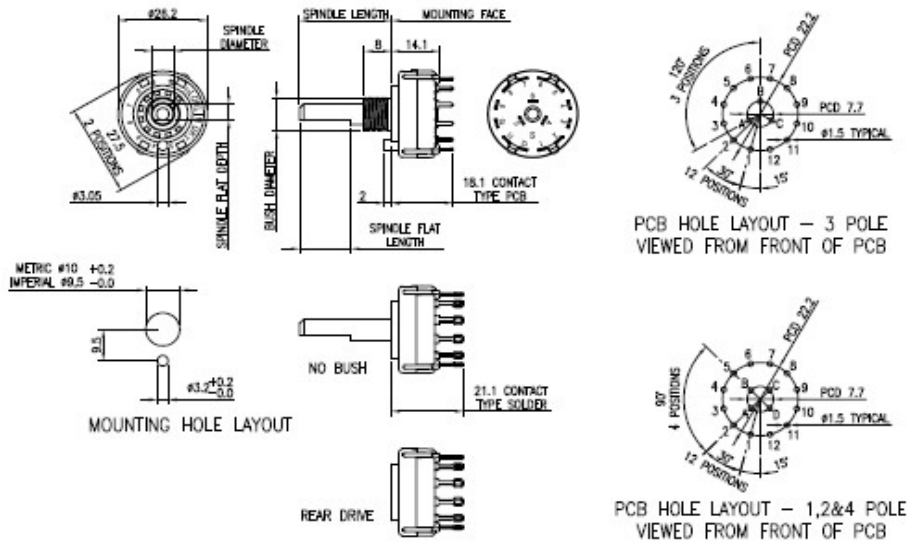
**CKF IP65 SEALED ROTARY SWITCH**

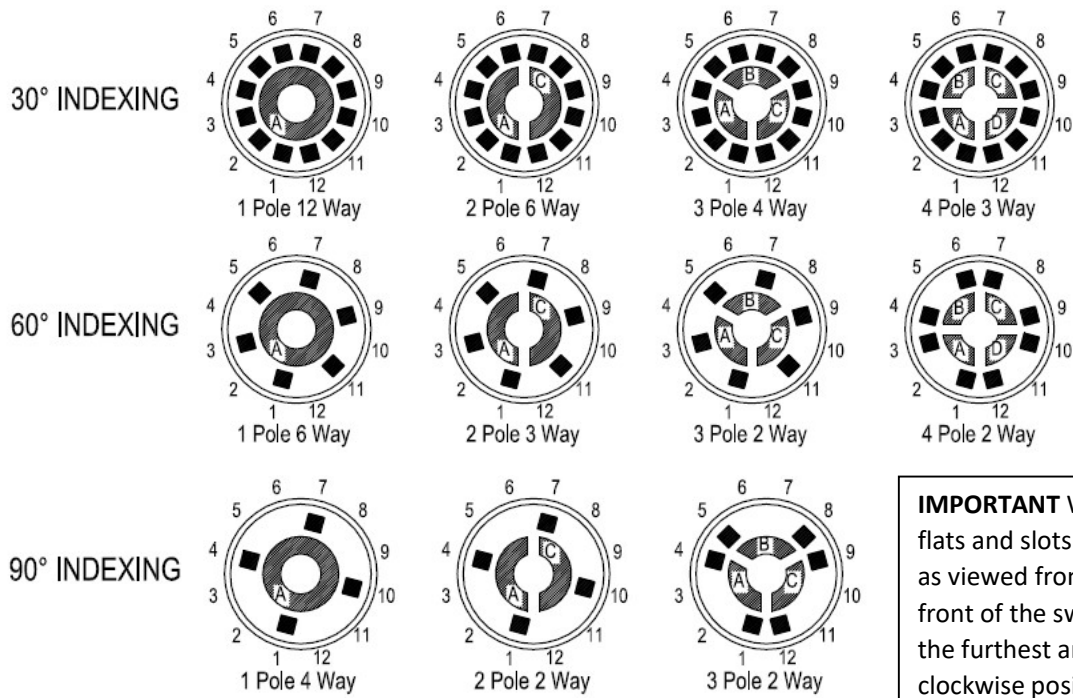
**ELECTRICAL & MECHANICAL SPECIFICATION**

<b>Switch Rating:</b>	1A @ 24V dc	<b>Life:</b>	>10,000 Cycles
<b>Proof Voltage:</b>	1,500V ac (Initial)	<b>Operating Torque (nominal):</b>	Standard 8.6 ±1 cNm
<b>Insulation Resistance:</b>	>999 MΩ at 500V dc (Initial)		Light Action 3.5 ± 0.5 cNm
<b>Contact Resistance</b>	<20 mΩ (Initial)	<b>End Stop Torque (nominal):</b>	0.80 Nm
<b>Contact/Terminal Material:</b>	Brass CZ108 Ag Plated	<b>Moulding Material:</b>	Polyamide 6.6 G.F
<b>Operating Temperature:</b>	-30°C to +85°C		

**FEATURES**

- |  |  |  |
|--|--|--|
| Single wafer switch                          | Shorting (make before break 30° indexing only) or non-shorting (break before make) | Dampened indexing and reduced shaft play gives smooth feel operation                 |
| Maximum 12 positions                         |  |  |
| Up to 4 poles per switch                     | Moulded stop or adjustable stops to restrict number of positions                   | Solder or PCB terminals<br>Gold flashed or gold plated terminals/ contacts available |
| Standard 30° indexing, 60° and 90° available | Continuous rotation also available   | Spindles with special flats, slots or knurls   |
| Moulded 27.5mm diameter                      | Made in UK   | Rear drive versions  |
|  | UL-V0 rated material available   | No bush versions   |





SPINDLE FLAT ANGLE - AVAILABLE IN 15° INCREMENTS

SCREWDRIVER SLOT - AVAILABLE IN 45° INCREMENTS



### ORDERING CODE FOR NON-STANDARD SWITCHES

C K F					SPINDLE LENGTH FMF IN FULL MM				
Index Angles & NO. OF POLES	NO OF WAYS (POSITIONS)	MBB or BBM	Contact Type	Contact Plating	SPINDLE DIAM.	SPINDLE FLAT DEPTH	BUSH DIAM.	LENGTH OF SPINDLE FLAT	ANGLE OF FLAT (°)
A 30° 1Pole	A 2	A BBM	Solder	SILVER	A 6mm	Nil	M10	A 2 N 15	A 0 N 195
B 2	B 3	B MBB*	Solder		B 6mm	5mm	M10	B 3 O No Flat	B 15 O
C 3	C 4	C BBM	PCB		C 6.35mm	Nil	9.52 mm	C 4 P 16	C 30 P 210
D 4	D 5	D MBB*	PCB		D 6.35mm	5.5mm	9.52 mm	D 5 Q 17	D 45 Q 225
E 60° 1Pole	E 6	E BBM	Solder	GOLD PLATE	E 6 R 18			E 6 R 18	E 60 R 240
F 2	F 7	F MBB*	Solder		F 7 S 19			F 7 S 19	F 75 S 255
G 3	G 8	G BBM	PCB		G 8 T 20			G 8 T 20	G 90 T 270
H 4	H 9	H MBB*	PCB		H 9 U 21			H 9 U 21	H 105 U 285
I 90° 1Pole	I 10	I BBM	Solder	GOLD FLASH	I 10 V 22			I 10 V 22	I 120 V 300
J 2	J 11	J MBB*	Solder		J 11 W 23			J 11 W 23	J 135 W 315
K 3	K 12	K BBM	PCB		K 12 X 24			K 12 X 24	K 150 X 330
Z No Stop	L	L MBB*	PCB		L 13 Y 25			L 13 Y 25	L 165 Y 345
					M 14 Z Full			M 14 Z Full	M 180

\*30° INDEX ANGLE ONLY  
PLEASE COMPLETE THE SPECIFICATION DRAWING IF YOUR DETAILS CANNOT BE FULL FILLED BY USING THE ORDERING CODE

## STANDARD PART NUMBERS

BASIC TYPES	SPINDLE DIAMETER	SPINDLE LENGTH FROM MOUNTING FACE	8mm LONG BUSH	SPINDLE FLAT LENGTH	ANGLE OF SPINDLE FLAT	SPINDLE FLAT THICKNESS
IMPERIAL	6.35mm	38mm	9.52 x 32 TPI	30mm	90°	5.5mm
METRIC	6.00mm	50mm	M10 x 0.75	No Flat	-	-

CIRCUITRY AT 30° INDEXING	PLATING FINISH	STANDARD METRIC		STANDARD IMPERIAL	
		Shorting (MBB)	Non- Shorting (BBM)	Shorting (MBB)	Non- Shorting (BBM)
<b>1 POLE 12 POSITION</b>		<b>STOP INCLUDED</b>			
Solder Tag	Silver	CKF1039	CKF1029	CKF1034	CKF1024
	Gold Flash	CKF1508	CKF1503	CKF1516	CKF1520
	Gold Plate	CKF2444	CKF1672	CKF2458	CKF2459
Printed Circuit Board	Silver	CKF1059	CKF1049	CKF1054	CKF1044
	Gold Flash	CKF1512	CKF1506	CKF1524	CKF1528
	Gold Plate	CKF1475	CKF1312	CKF2460	CKF2461
<b>1 POLE 12 POSITION</b>		<b>CONTINUOUS ROTATION</b>			
Solder Tag	Silver	CKF1038	CKF1028	CKF1033	CKF1023
	Gold Flash	CKF1533	CKF1537	CKF1541	CKF1545
	Gold Plate	CKF2445	CKF2446	CKF2462	CKF2463
Printed Circuit Board	Silver	CKF1058	CKF1048	CKF1053	CKF1043
	Gold Flash	CKF1534	CKF1538	CKF1542	CKF1546
	Gold Plate	CKF2447	CKF2448	CKF2464	CKF2465
<b>2 POLE 6 POSITION</b>		<b>STOP INCLUDED</b>			
Solder Tag	Silver	CKF1040	CKF1030	CKF1035	CKF1025
	Gold Flash	CKF1509	CKF1496	CKF1517	CKF1521
	Gold Plate	CKF2449	CKF1726	CKF2466	CKF2467
Printed Circuit Board	Silver	CKF1060	CKF1050	CKF1055	CKF1045
	Gold Flash	CKF1513	CKF1473	CKF1525	CKF1529
	Gold Plate	CKF2450	CKF1850	CKF2468	CKF2469
<b>2 POLE 6 POSITION</b>		<b>CONTINUOUS ROTATION</b>			
Solder Tag	Silver	CKF1114	CKF1118	CKF1120	CKF1121
	Gold Flash	CKF1535	CKF1539	CKF1543	CKF1547
	Gold Plate	CKF2451	CKF2452	CKF2470	CKF2471
Printed Circuit Board	Silver	CKF1119	CKF1113	CKF1122	CKF1089
	Gold Flash	CKF1536	CKF1540	CKF1544	CKF1548
	Gold Plate	CKF2453	CKF2454	CKF2472	CKF2473
<b>3 POLE 4 POSITION</b>		<b>STOP INCLUDED</b>			
Solder Tag	Silver	CKF1041	CKF1031	CKF1036	CKF1026
	Gold Flash	CKF1510	CKF1504	CKF1518	CKF1522
	Gold Plate	CKF2455	CKF1577	CKF2474	CKF2475
Printed Circuit Board	Silver	CKF1061	CKF1051	CKF1056	CKF1046
	Gold Flash	CKF1514	CKF1500	CKF1526	CKF1530
	Gold Plate	CKF2456	CKF1952	CKF2476	CKF2477
<b>3 POLE 4 POSITION</b>		<b>CONTINUOUS ROTATION</b>			
Solder Tag	Silver	CKF1042	CKF1032	CKF1037	CKF1027
	Gold Flash	CKF1511	CKF1505	CKF1519	CKF1523
	Gold Plate	CKF1673	CKF1822	CKF2478	CKF2479
Printed Circuit Board	Silver	CKF1062	CKF1052	CKF1057	CKF1047
	Gold Flash	CKF1515	CKF1507	CKF1527	CKF1531
	Gold Plate	CKF2457	CKF1953	CKF2480	CKF2481



## X-ON Electronics

Largest Supplier of Electrical and Electronic Components

*Click to view similar products for [Rotary Switches](#) category:*

*Click to view products by [Lorlin](#) manufacturer:*

Other Similar products are found below :

[57HS22-02-2-06N](#) [57M22-02B16N](#) [57M22-09A16N](#) [M3786/4-0881](#) [M3786/4-3267](#) [M3786/4-5568](#) [M3786/4-6029](#) [71ESF30-05204N](#)  
[MC06L1NCGF](#) [84986-26](#) [9003K2C003GA](#) [PLR3251](#) [PLR3262](#) [PS3](#) [A0142M2SP](#) [A029303](#) [R2AA4455NNNN](#) [R2BB4455NNNN](#) [DR75-](#)  
[AMSF-10R-B](#) [14-520.0360](#) [1703.3201](#) [HW1MS-0202-101](#) [24002-03S](#) [A029101](#) [ACSNO-129-YB-C1014](#) [ACSNO-134-RR-YB-C1005](#)  
[ACSNO-353-SB-C3016](#) [1825537-4](#) [T505](#) [T505E](#) [24005-03N](#) [H10207RR01Q](#) [M3786/39-4ZC](#) [M3786/4-0002](#) [M3786/4-0630](#) [M3786/4-](#)  
[1028L](#) [M3786/4-1233L](#) [M3786/4-3044](#) [M3786/4-3129](#) [M3786/4-5008L](#) [M3786/4-5256](#) [MC6CX1A502X009](#) [42HS36-01-1-06N](#) [42P36-](#)  
[03B10S](#) [44MBS60-04-2-03N](#) [44MG90-02-1-02N](#) [50KMT90-01-2-02N](#) [51A22-01-1-16S](#) [51CDP30-01PAJN](#) [51KSP30-01D04N](#)